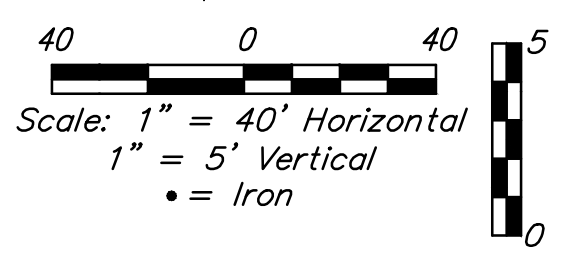
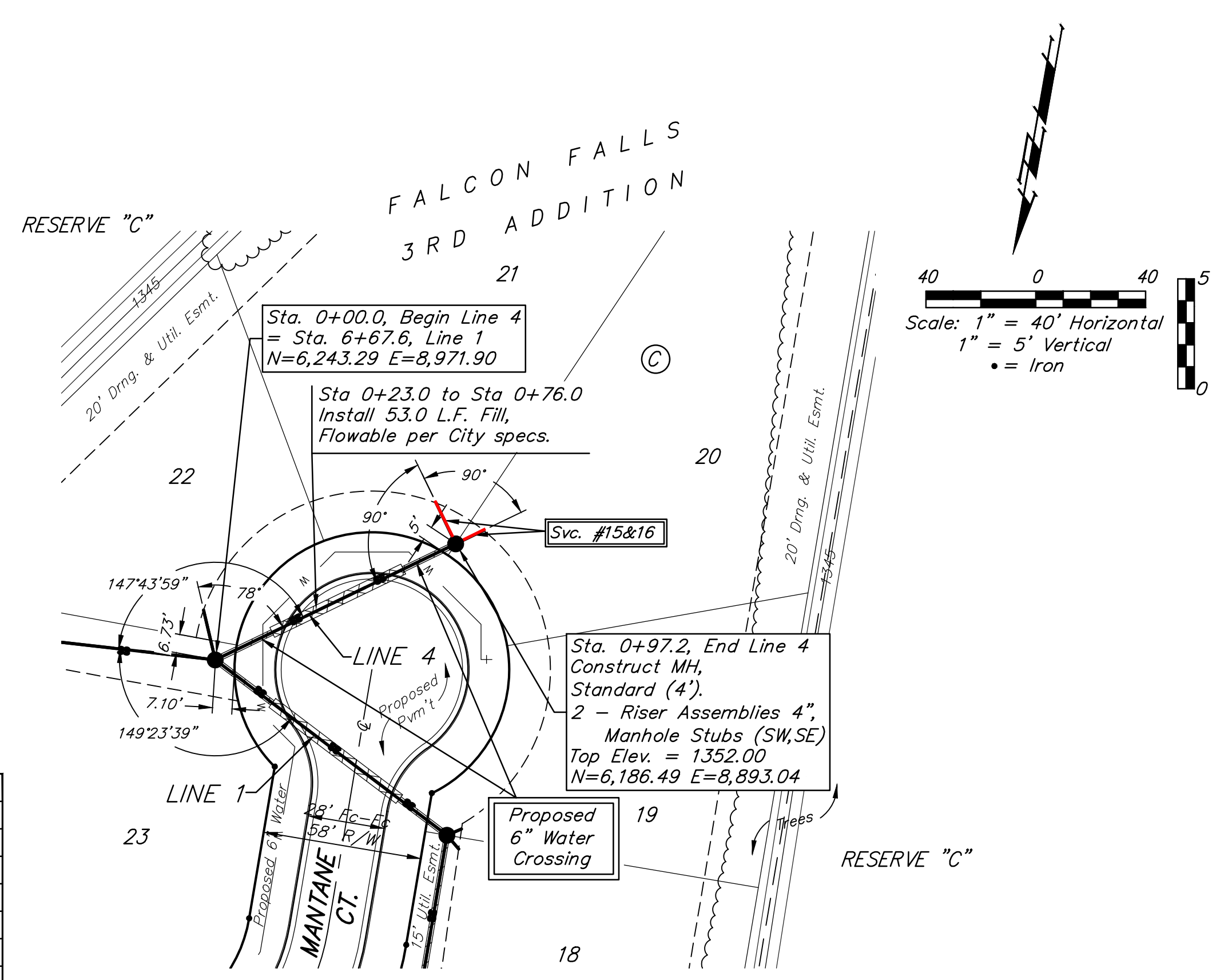
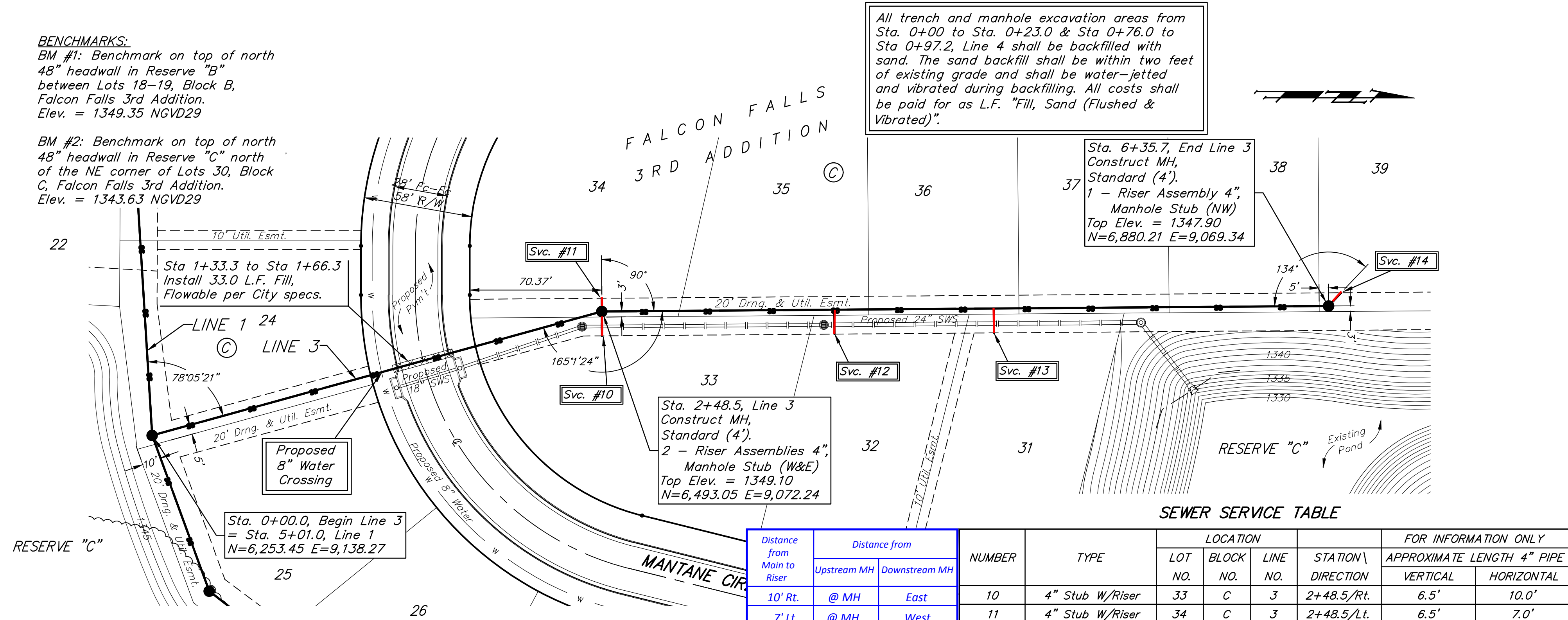


**BENCHMARKS:**  
 BM #1: Benchmark on top of north 48" headwall in Reserve "B" between Lots 18-19, Block B, Falcon Falls 3rd Addition. Elev. = 1349.35 NGVD29

BM #2: Benchmark on top of north 48" headwall in Reserve "C" north of the NE corner of Lots 30, Block C, Falcon Falls 3rd Addition. Elev. = 1343.63 NGVD29

All trench and manhole excavation areas from Sta. 0+00 to Sta. 0+23.0 & Sta. 0+76.0 to Sta. 0+97.2, Line 4 shall be backfilled with sand. The sand backfill shall be within two feet of existing grade and shall be water-jetted and vibrated during backfilling. All costs shall be paid for as L.F. "Fill, Sand (Flushed & Vibrated)".



**SEWER SERVICE TABLE**

Distance from Main to Riser	Distance from		NUMBER	TYPE	LOCATION			FOR INFORMATION ONLY		
	Upstream MH	Downstream MH			LOT NO.	BLOCK NO.	LINE NO.	STATION \ DIRECTION	APPROXIMATE LENGTH 4" PIPE	VERTICAL
10' Rt.	@ MH	East	10	4" Stub W/Riser	33	C	3	2+48.5/Rt.	6.5'	10.0'
7' Lt.	@ MH	West	11	4" Stub W/Riser	34	C	3	2+48.5/Lt.	6.5'	7.0'
13' Rt.	263'	124'	12	8" X 4" Tee	32	C	3	3+72.3/Rt.	4.5'	13.0'
13' Rt.	178'	209'	13	8" X 4" Tee	31	C	3	4+57.3/Rt.	4.5'	13.0'
10' Lt.	@ MH	NW	14	4" Stub W/Riser	39	C	3	6+35.6/Lt.	3.5'	10.0'
16.5' Lt.	@ MH	SE	15	4" Stub W/Riser	21	C	4	0+97.2/Lt.	8.5'	16.5'
11.5' Rt.	@ MH	SW	16	4" Stub W/Riser	20	C	4	0+97.2/Rt.	8.5'	11.5'

NOTE: Vertical Riser Pipe shall be extended to 2' minimum above ground water elevation and 4' maximum below proposed ground elevation.

