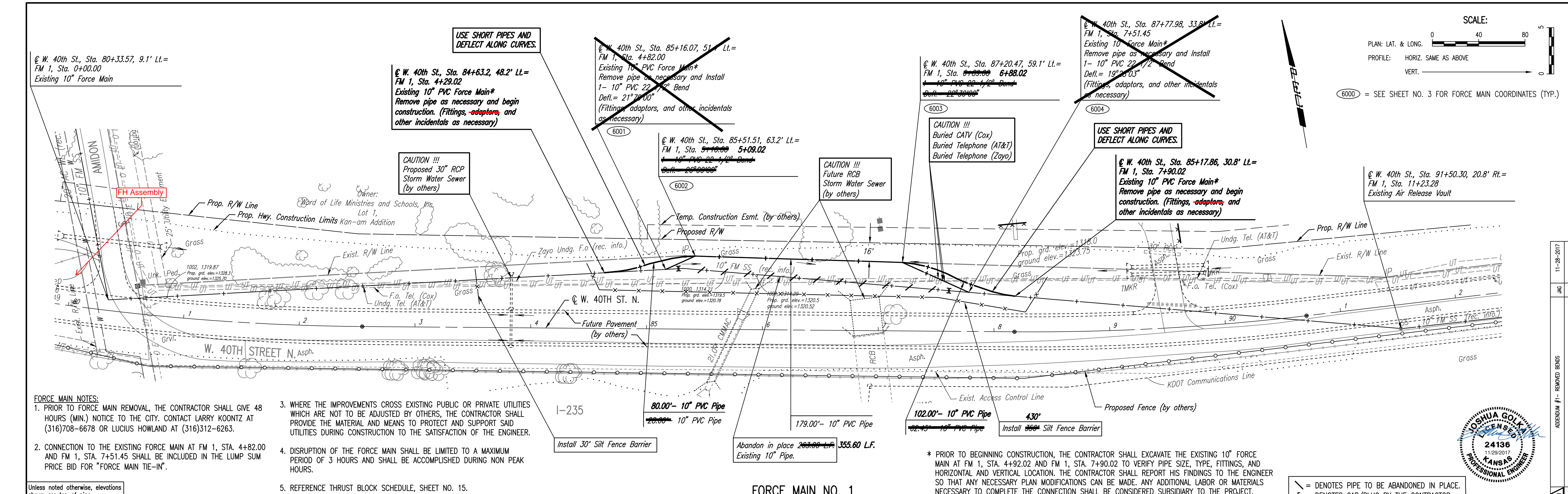


PLAN	CHECKED	DATE
	CHECKED	

PROFILE	CHECKED	DATE
	CHECKED	



FORCE MAIN NOTES:

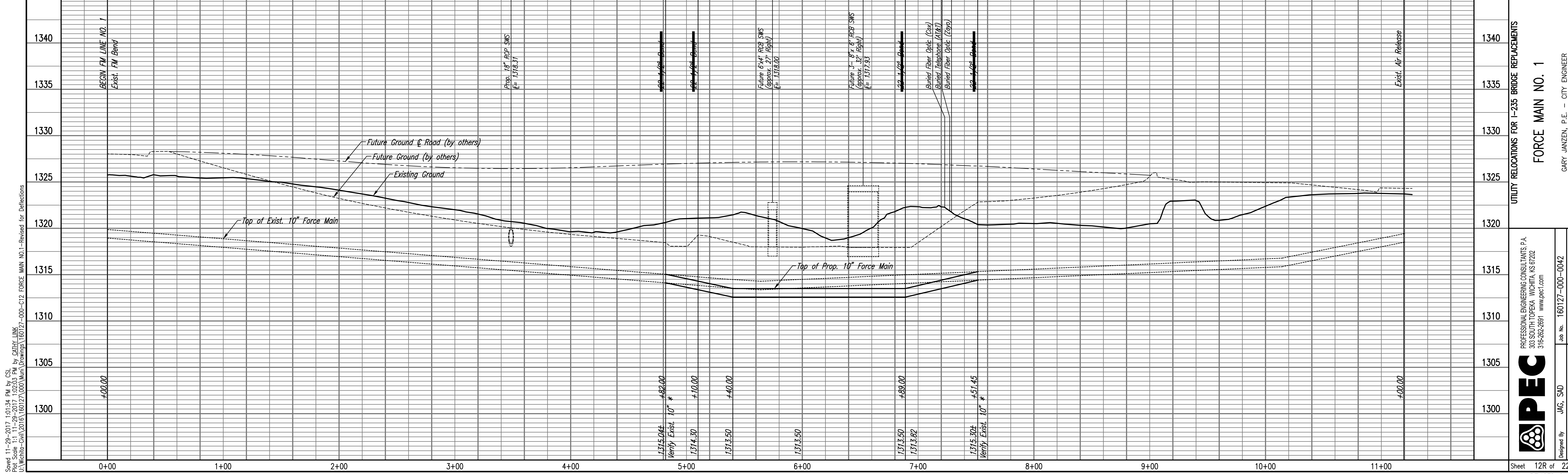
1. PRIOR TO FORCE MAIN REMOVAL, THE CONTRACTOR SHALL GIVE 48 HOURS (MIN.) NOTICE TO THE CITY. CONTACT LARRY KOONTZ AT (316)708-6678 OR LUCIUS HOWLAND AT (316)312-6263.
2. CONNECTION TO THE EXISTING FORCE MAIN AT FM 1, STA. 4+82.00 AND FM 1, STA. 7+51.45 SHALL BE INCLUDED IN THE LUMP SUM PRICE BID FOR "FORCE MAIN TIE-IN".
3. WHERE THE IMPROVEMENTS CROSS EXISTING PUBLIC OR PRIVATE UTILITIES WHICH ARE NOT TO BE ADJUSTED BY OTHERS, THE CONTRACTOR SHALL PROVIDE THE MATERIAL AND MEANS TO PROTECT AND SUPPORT SAID UTILITIES DURING CONSTRUCTION TO THE SATISFACTION OF THE ENGINEER.
4. DISRUPTION OF THE FORCE MAIN SHALL BE LIMITED TO A MAXIMUM PERIOD OF 3 HOURS AND SHALL BE ACCOMPLISHED DURING NON PEAK HOURS.
5. REFERENCE THRUST BLOCK SCHEDULE, SHEET NO. 15.

Unless noted otherwise, elevations shown are top of pipe

FORCE MAIN NO. 1

* PRIOR TO BEGINNING CONSTRUCTION, THE CONTRACTOR SHALL EXCAVATE THE EXISTING 10" FORCE MAIN AT FM 1, STA. 4+92.02 AND FM 1, STA. 7+90.02 TO VERIFY PIPE SIZE, TYPE, FITTINGS, AND HORIZONTAL AND VERTICAL LOCATION. THE CONTRACTOR SHALL REPORT HIS FINDINGS TO THE ENGINEER SO THAT ANY NECESSARY PLAN MODIFICATIONS CAN BE MADE. ANY ADDITIONAL LABOR OR MATERIALS NECESSARY TO COMPLETE THE CONNECTION SHALL BE CONSIDERED SUBSIDIARY TO THE PROJECT.

⊃ = DENOTES PIPE TO BE ABANDONED IN PLACE.
 ⊣ = DENOTES CAP/PLUG BY THE CONTRACTOR



Save 11-29-2017 10:15:34 PM by CSI
 Plot Scale 1:1 11-29-2017 10:20:03 PM by CATHY LUNG
 U:\Wichita-Civil\2016\160127\000\Wm\Drawings\160127-000-012 FORCE MAIN NO.1- Revised for Deflections

UTILITY RELOCATIONS FOR I-235 BRIDGE REPLACEMENTS
FORCE MAIN NO. 1

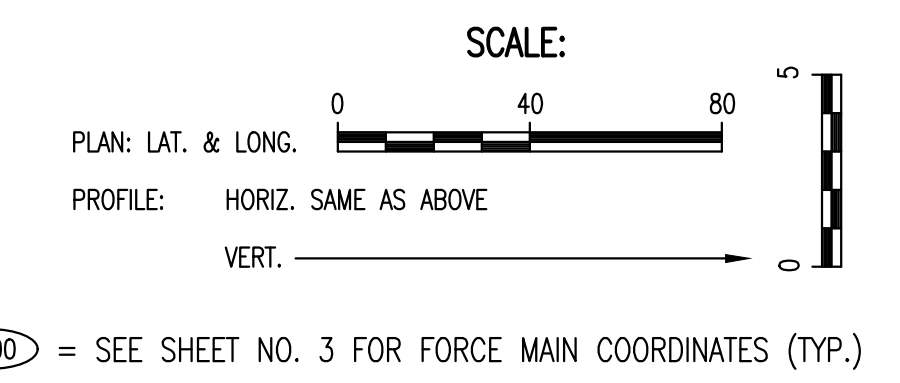
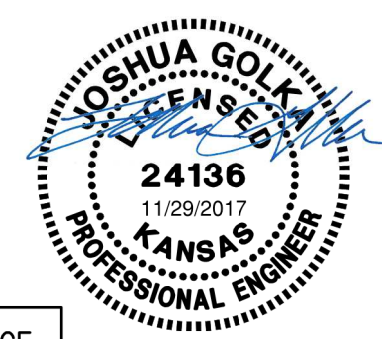
PROFESSIONAL ENGINEERING CONSULTANTS P.A.
 303 SOUTH TOPEKA WICHITA, KS 67202
 316-262-2691 www.pec1.com

Designed By: JAG, SAU
 Drawn By: CSL, KTD

Job No. 160127-000-0042
 Date SEPTEMBER 2016

GARY JANZEN, P.E. - CITY ENGINEER
 CITY OF WICHITA PROJECT NO. 468-85126

Sheet 12R of 22
 REVISED SHEET



JAG	11-28-2017	Date
By		
Revision		
No.		