

# GENERAL NOTES:

1. Contractor will be required to provide notice to utility companies a minimum of forty-eight (48) hours prior to any excavation, as follows:

Kansas One-Call 687-2470

The Contractor must notify the following in case of an emergency:

- Cox Communications 262-4270
- Kansas Gas Service 1-888-482-4950
- Westar Energy 383-8650
- Aquila Energy 1-800-303-0357
- AT&T 268-2245
- City of Wichita Water Dept. 268-4563
- City of Wichita Sewer Maint. 268-4024
- City of Wichita Storm Sewer Maint. 268-4090
- City of Wichita Traffic Maint. 268-4034
- Conoco Phillips Pipeline Co. 1-877-267-2290
- Southern Star Pipeline Co. 529-6600
- Kinder-Morgan Pipeline Co. 1-888-844-5658

2. Utility service lines, poles, valve boxes, meters, and etcetera are to be adjusted as necessary by others prior to construction unless the plans specifically call for their adjustment by the Contractor or unless the plans specifically identify a utility to be adjusted by its owner during construction. Existing utilities and their location, as shown on the plans, represent the best information obtainable for design. The Contractor will be required to work around existing utilities within the right-of-way which do not conflict with proposed construction.

3. Rubble from the removal of miscellaneous structures and excess excavation which is to be wasted shall be disposed of on sites to be provided by the Contractor. These sites shall be approved by the Engineer as to suitability, appearance and site location. Locations, in the opinion of the Engineer, that will leave an unsightly appearance will not be approved. All disposal sites must be approved by the Kansas Department of Health and Environment. Material either stockpiled or disposed of in a flood plain would require a Kansas State Board of Agriculture permit. Any material dumped in waters of the United States or wetlands is subject to U.S. Corps. of Engineers permitting regulations. Any material buried or stockpiled beyond approved construction limits would require additional archaeological investigations unless buried in a previously approved borrow location.

4. Trees and shrubs in the work area which are in direct conflict with proposed new construction shall be removed by the Contractor ONLY with Developer or Baughman Company approval. Trees and shrubs which are not in direct conflict with proposed new construction shall be saved and protected from damage. If trimming is necessary, a chainsaw shall be used. Breaking limbs with equipment will not be allowed. An on-site pre-construction meeting will occur prior to any construction to discuss tree removal, tree protection and tree trimming.

5. The Contractor shall give all property owners and/or tenants of developed property abutting the construction of this project a minimum of ten (10) days notice prior to start of construction.

6. The Contractor shall be responsible for preserving property irons. The Contractor will be required to re-establish any property irons which are damaged or destroyed by his construction operations. Such irons shall be re-established by a licensed land surveyor in accordance with state laws.

7. All existing and proposed erosion control measures including silt fencing, erosion control mat, straw bales, inlet barriers, and const. entrance shall be maintained throughout construction by the contractor and until project is accepted by the City of Wichita. The on-site engineer shall complete weekly reports on the status of erosion control measures. The contractor shall be required to comply with maintenance and/or replacement of erosion control measures as determined by the on-site engineer until project is accepted by City of Wichita. Maintenance and/or replacement of erosion control measures to be paid by L.S. bid item "Maintain Existing BMP's."

8. All excess excavation shall remain on-site and shall be stockpiled or spread at a location determined by the engineer.

9. The Contractor shall be responsible for maintaining continuous flow of sewage through construction. Contractor's proposed method for maintaining sewage flow shall be approved by the Engineer. Cost of maintaining flow of sewage through construction will not be paid for directly and this cost shall be considered as subsidiary to the other pay items of work.

10. All areas disturbed during construction shall be seeded as follows (Temporary Seeding):

Seed: Rye grass (PLS)--5 lbs./1000 Sq. Ft.  
Fertilizer and Mulch: per City Specifications

All costs associated with seeding shall be included in bid item "Seeding". All seeding operations shall conform to City of Wichita Standard Specifications.

11. The proposed internal gravity sanitary sewer will be constructed by others. That project bid date is planned for September, 2017. The contractor for this project and the internal sewer will be required to coordinate scheduling and construction activities. All contractors on-site will be required to coordinate construction activities.

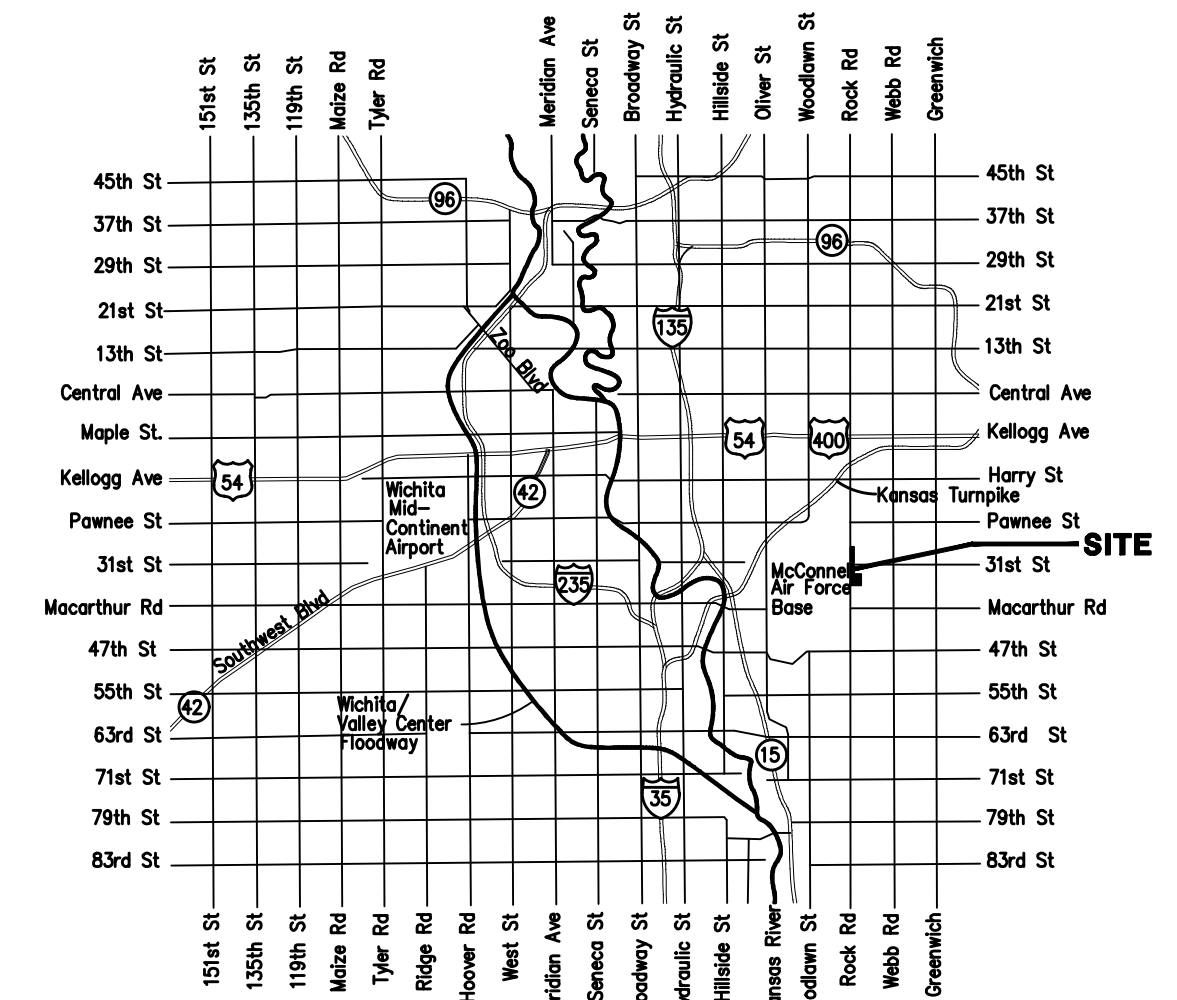
12. Construction Phasing:  
Line 2 of the gravity sanitary sewer main shall be constructed first to allow for construction of internal sanitary sewer by others.

13. If traffic is impacted by construction, a traffic control plan must be submitted and approved by the City Traffic Engineer, Brian Coon, at traffic@wichita.gov before construction can begin. The Contractor shall be responsible for all traffic control measures to facilitate construction. All construction zone markings and signage shall conform to the latest version of Manual on Uniform Traffic Control Devices (MUTCD) as published by the US Dept. of Transportation, Federal Highway Administration. All costs associated with construction markings and signage shall be the Contractors responsibility.

14. The Developer for this project is Jay Russell, Ph. 722-2417

# Main 28, WIS SANITARY SEWER IMPROVEMENTS to serve **ROCKY FORD ADDITION** CITY OF WICHITA, KANSAS

Gary Janzen, P.E. City Engineer  
Project Number 468-84465  
OCA Number  
621102



## BENCHMARKS

**BM #1:** City of Wichita Benchmark Disk at South End of Hubguard on the SW Cor. of R.C.B.G., West Side of Rock Road, 706' North-Northwest Corner of Lot 44, Block A, Rocky Ford Addition  
Elev. = 1368.14 NAVD88

**BM #2:** "□" on Fence Footing under Warning US Airforce Installation Sign West of Rock Road, 400' N of W 1/4 Cor.  
Elev. = 1377.45 NAVD88

**BM #3:** "□" on Northeast Cor. Headwall RCP, East of Rock Road and South of Arnold Blvd.  
Elev. = 1376.10 NAVD88

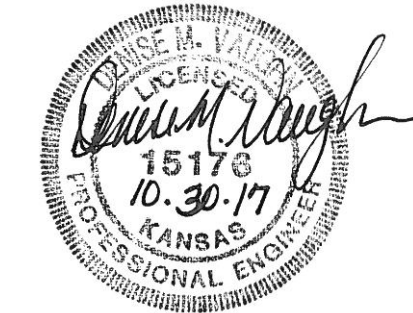
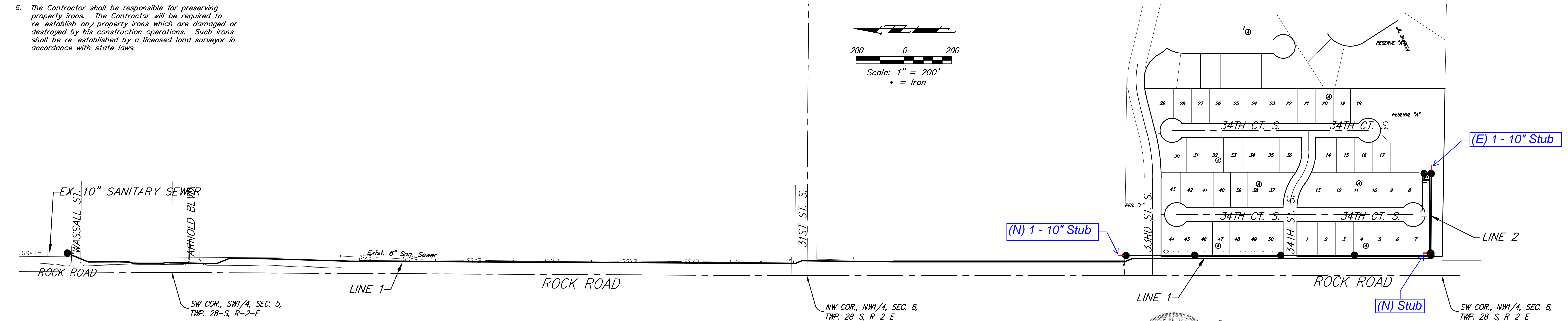
**BM #4:** "□" on Top of Curb by Fire Hydrant. South of Concrete Drive at 2800 S. Rock Road  
Elev. = 1379.84 NAVD88

## Vicinity Map

Mies Construction - Contractor  
J. Brand - City of Wichita, Field Project Engineer  
S. Stripling - City of Wichita, Inspector  
As-built  
Stubs  
Release Date: 8/16/2018  
Completion Date:  
pdf: 8/17/2018 apr

## SHEET INDEX

Title Sheet	1
Line 1	2-8
Line 2	9-10
Pump Station Details	11-15
Erosion Control Plan	16
Erosion Control BMP Details	17-21
Easement & R/W Grading Plan	22
Standard Manhole Detail	23
Ring & Cover Detail	24
Coordinate Sheet	25
Copy of Plat	26



Baughman Company, P.A. 315 Ellis St. Wichita, KS 67211 P 316-262-7271 F 316-262-0149  
ENGINEERING | SURVEYING | PLANNING | LANDSCAPE ARCHITECTURE