

BENCHMARKS:
BM #1: City of Wichita Benchmark Disk at South End of Hubguard on the SW Cor. of R.C.B.C., West Side of Rock Road, 706'. North-Northwest Corner of Lot 44, Block A, Rocky Ford Addition Elev. = 1368.14 NAVD88

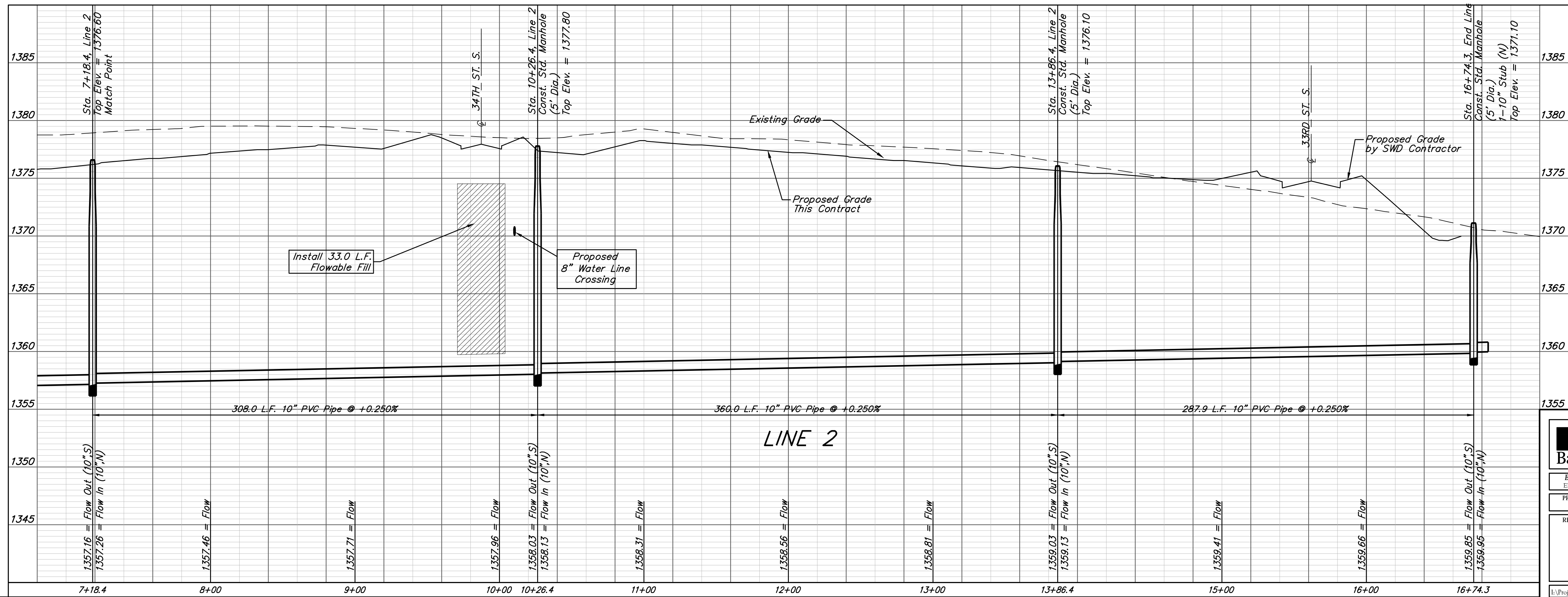
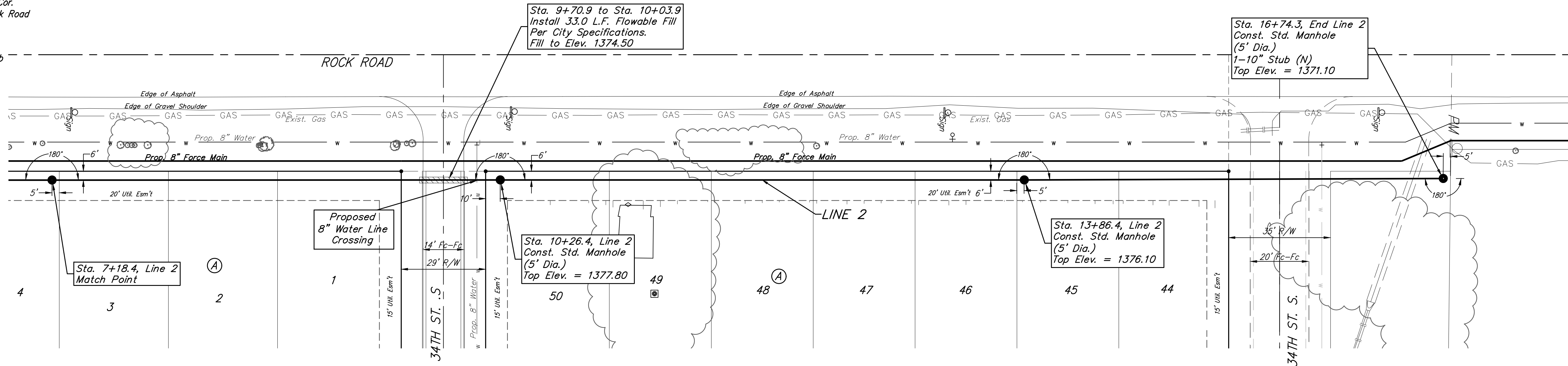
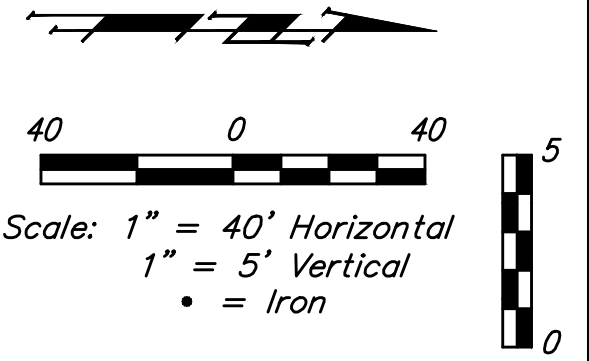
BM #2: "□" on Fence Footing under Warning US Airforce Installation Sign West of Rock Road, 400' N of W₁/4 Cor. Elev. = 1377.45 NAVD88

BM #3: "□" on Northeast Cor. Headwall RCP, East of Rock Road and South of Arnold Blvd. Elev. = 1376.10 NAVD88

BM #4: "□" on Top of Curb by Fire Hydrant, South of Concrete Drive at 2800 S. Rock Road Elev. = 1379.84 NAVD88

BUILT PER PLAN

Existing trees which are in direct conflict with proposed new construction shall be removed by the Contractor **ONLY** with approval of the Engineer. Trees not in direct conflict with proposed new construction shall remain and be protected from damage. Cost shall be included in bid item "Site Clearing"



Baughman		Rocky Ford Addition LINE 2 Sanitary Sewer Improvements	
Baughman Company, P.A. 315 Ellis St. Wichita, KS 67211 P 316-262-7271 F 316-262-0149 ENGINEERING SURVEYING PLANNING LANDSCAPE ARCHITECTURE			
PROJECT NUMBER	DESIGN	DMV	DRAWN
REVISIONS:	APPROVED	DATE	10/29/17
	SCALE	Noted	
	SHEET	10 OF 26	