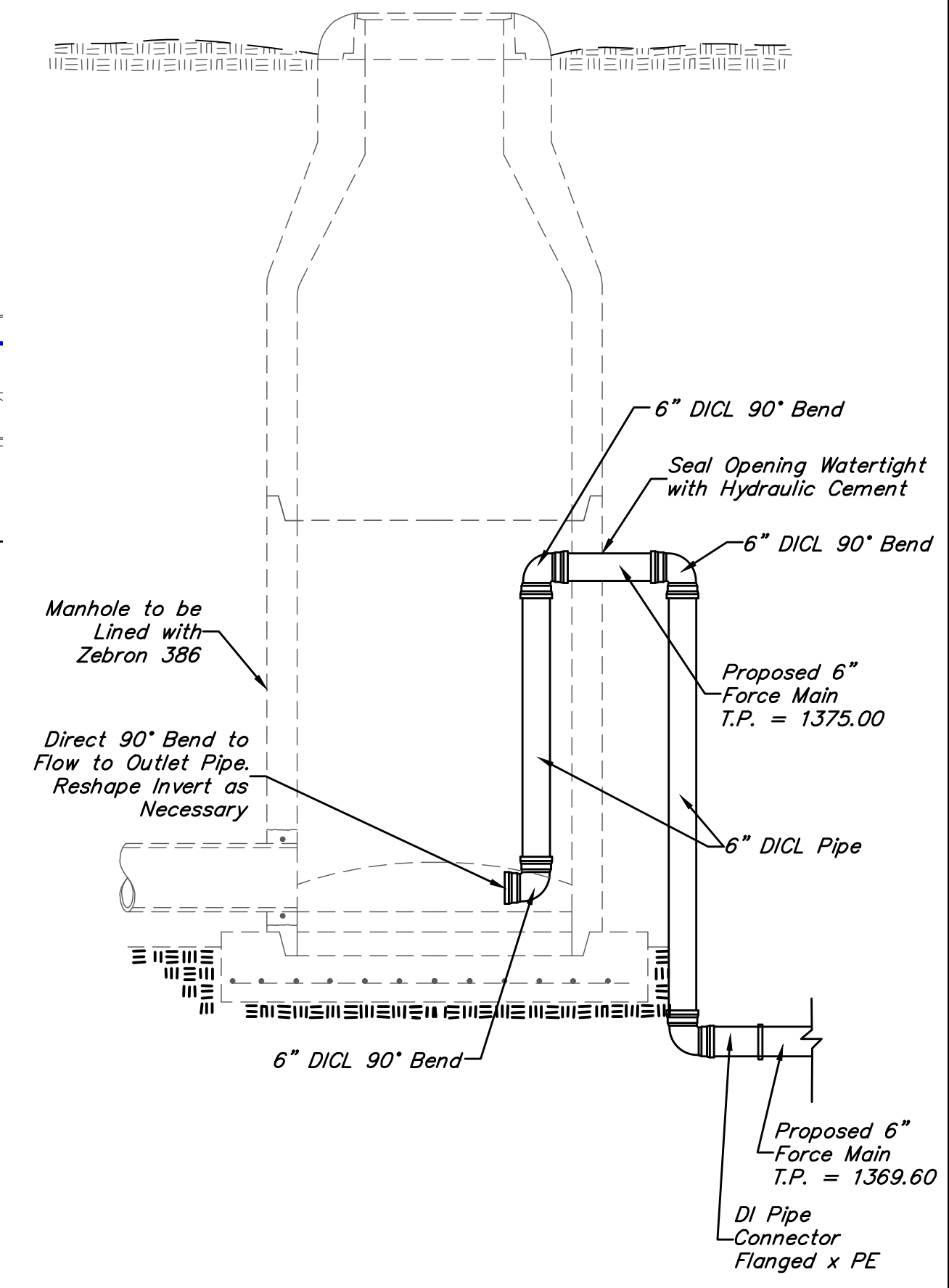
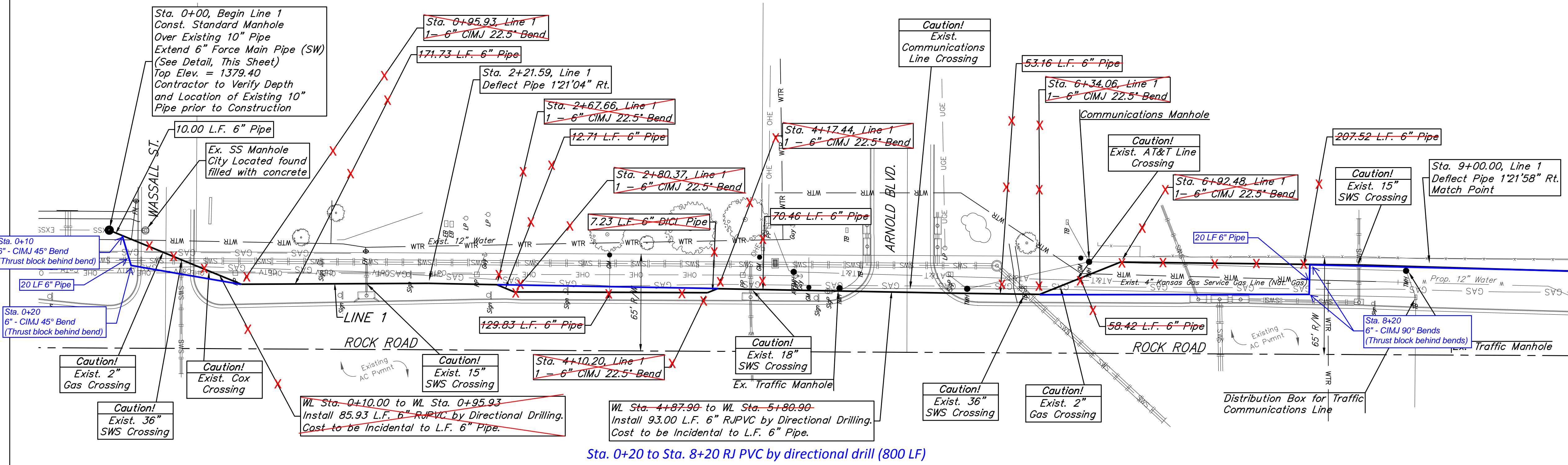
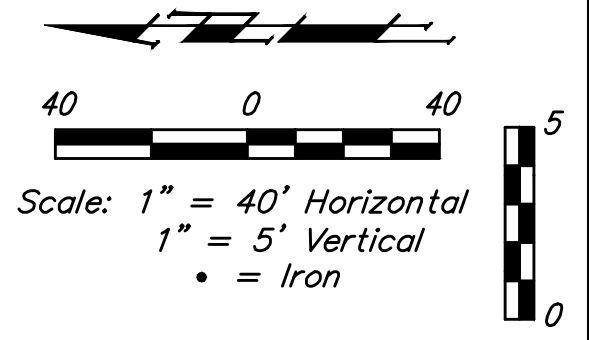
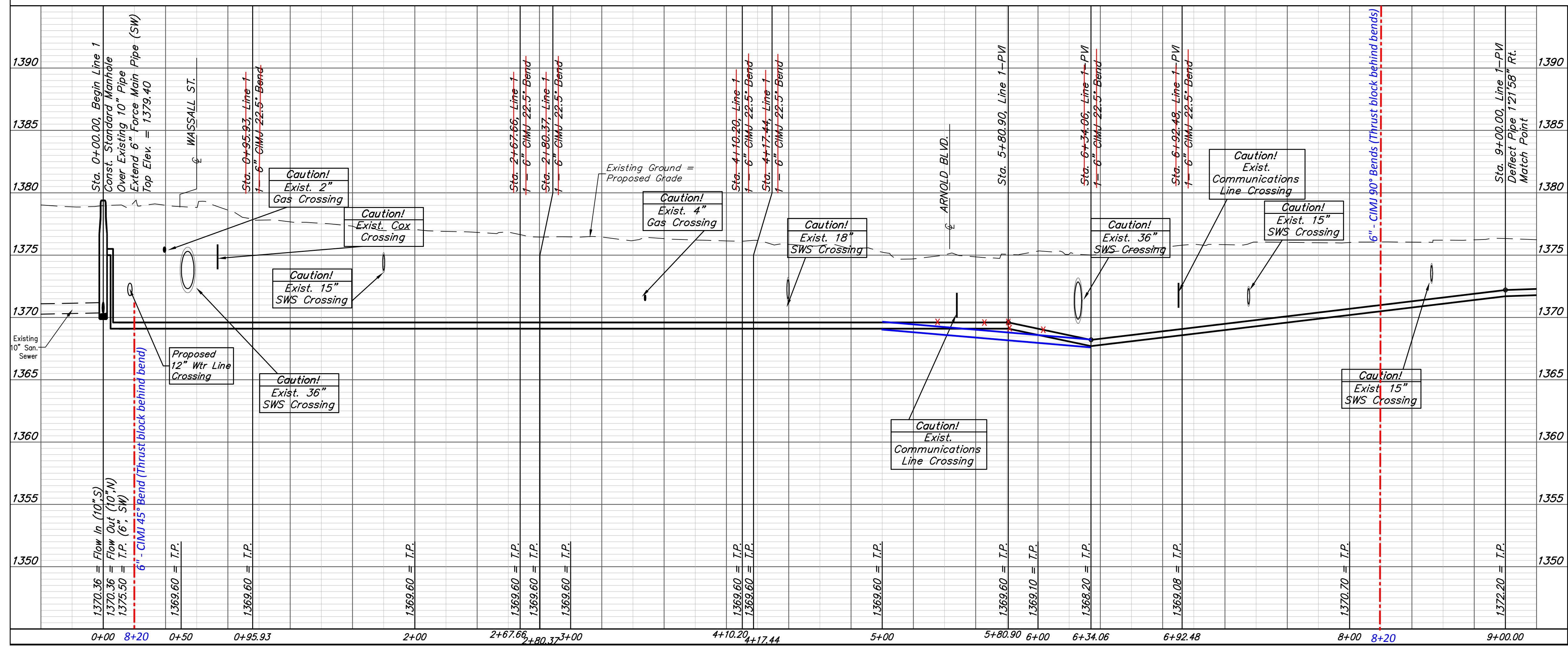


BENCHMARKS:
 BM #1: City of Wichita Benchmark Disk at South End of Hubguard on the SW Cor. of R.C.B.C., West Side of Rock Road, 706' North-Northwest Corner of Lot 44, Block A, Rocky Ford Addition Elev. = 1368.14 NAVD88
 BM #2: "□" on Fence Footing under warning US Airforce Installation Sign West of Rock Road, 400' N of W₄ Cor. Elev. = 1377.45 NAVD88
 BM #2: "□" on Northeast Cor. Headwall RCP, East of Rock Road and South of Arnold Blvd. Elev. = 1376.10 NAVD88
 BM #2: "□" on Top of Curb by Fire Hydrant, South of Concrete Drive at 2800 S. Rock Road Elev. = 1379.84 NAVD88



Sta 0+00, Line 1
FORCE MAIN CONNECTION DETAIL
 No Scale

Note: Pipe shall be Anchored Securely to Wall of Manhole. 90° Elbow at Base of Manhole shall be Directed to Discharge Flow in Direction of 10" Outlet Pipe and Invert shall be Re-shaped as Necessary. All Costs Associated with Manhole Connections, Piping Inside Manhole and Invert Re-shaping shall be Included in Bid Item "MH, Connect to Existing."



		Rocky Ford Addition LINE 1 Sanitary Sewer Improvements	
		Baughman Company, P.A. 315 Ellis St. Wichita, KS 67211 P 316-262-7271 F 316-262-0149 ENGINEERING SURVEYING PLANNING LANDSCAPE ARCHITECTURE	
PROJECT NUMBER	DESIGN	DMV	DRAWN
REVISIONS:	APPROVED	DATE	10/29/17
	SCALE	Noted	
	SHEET		
			2 OF 26

