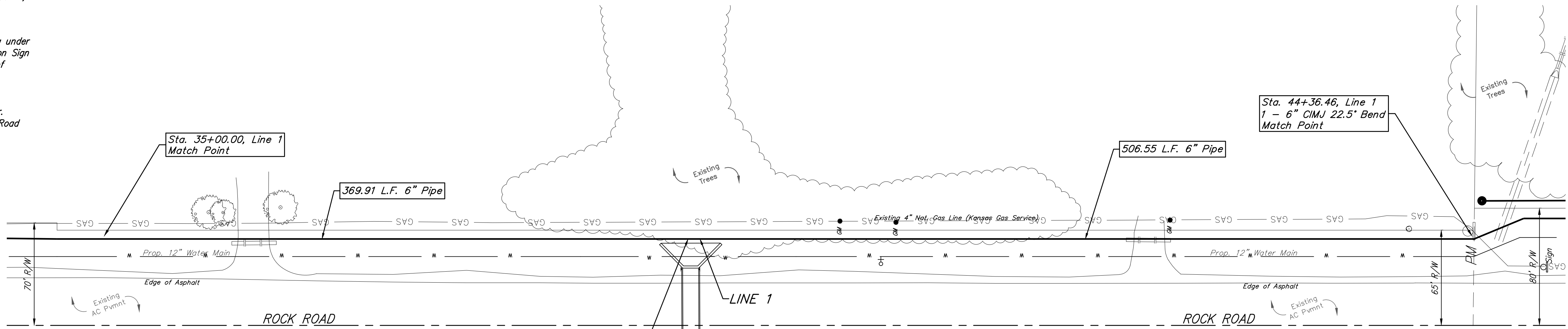
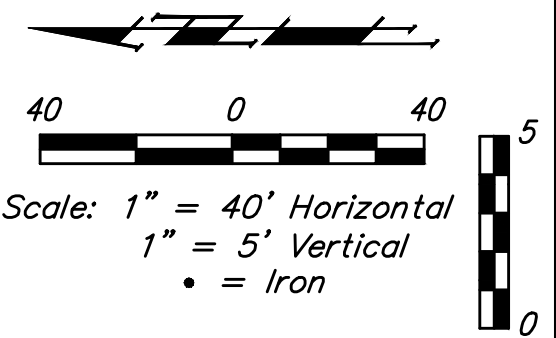


BENCHMARKS:
BM #1: City of Wichita Benchmark Disk at South End of Hubguard on the SW Cor. of R.C.B.C., West Side of Rock Road, 706' North-Northwest Corner of Lot 44, Block A, Rocky Ford Addition Elev. = 1368.14 NAVD88

BM #2: "□" on Fence Footing under Warning US Airforce Installation Sign West of Rock Road, 400' N of W₁ Cor. Elev. = 1377.45 NAVD88

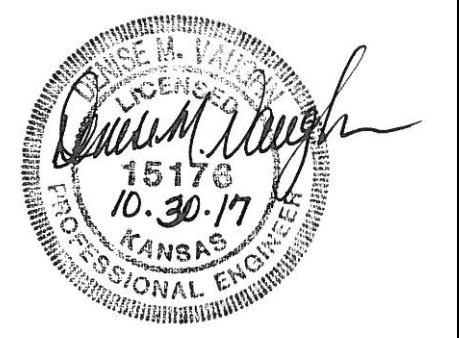
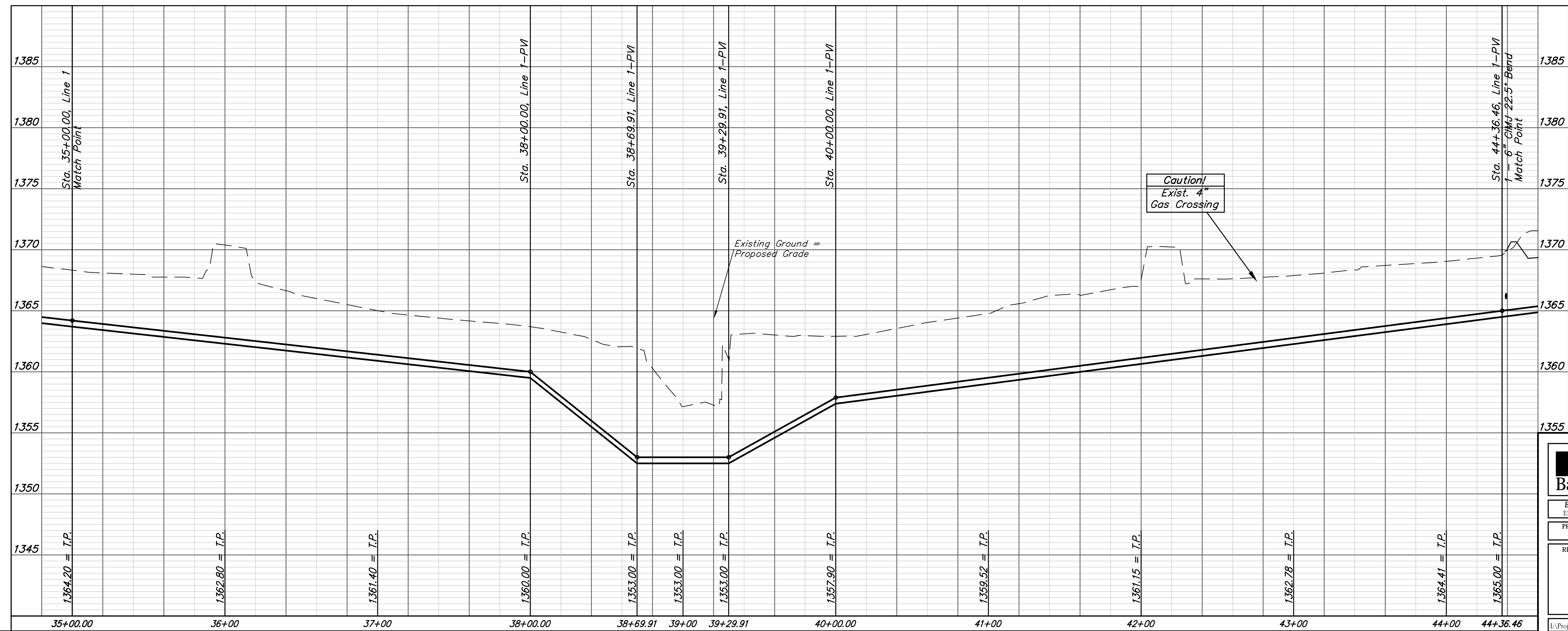
BM #3: "□" on Northeast Cor. Headwall RCP, East of Rock Road and South of Arnold Blvd. Elev. = 1376.10 NAVD88

BM #4: "□" on Top of Curb by Fire Hydrant, South of Concrete Drive at 2800 S. Rock Road Elev. = 1379.84 NAVD88



WL Sta. 38+69.91 to WL Sta. 39+29.91
 Install 60.00 L.F. 6" R/PVC by Directional Drilling.
 Cost to be Incidental to L.F. 6" Pipe.

BUILT PER PLAN



Baughman		Rocky Ford Addition LINE 1 Sanitary Sewer Improvements	
Baughman Company, P.A. 315 Ellis St. Wichita, KS 67211 P 316-262-7271 F 316-262-0149 ENGINEERING SURVEYING PLANNING LANDSCAPE ARCHITECTURE			
PROJECT NUMBER	DESIGN	DMV	DRAWN
REVISIONS:	APPROVED	DATE	10/29/17
	SCALE	Noted	
	SHEET		
			6 OF 26