

BENCHMARKS:
BM #1: City of Wichita Benchmark Disk at South End of Hubguard on the SW Cor. of R.C.B.C., West Side of Rock Road, 706' North-Northwest Corner of Lot 44, Block A, Rocky Ford Addition Elev. = 1368.14 NAVD88

BM #2: "□" on Fence Footing under Warning US Airforce Installation Sign West of Rock Road, 400' N of W₁ Cor. Elev. = 1377.45 NAVD88

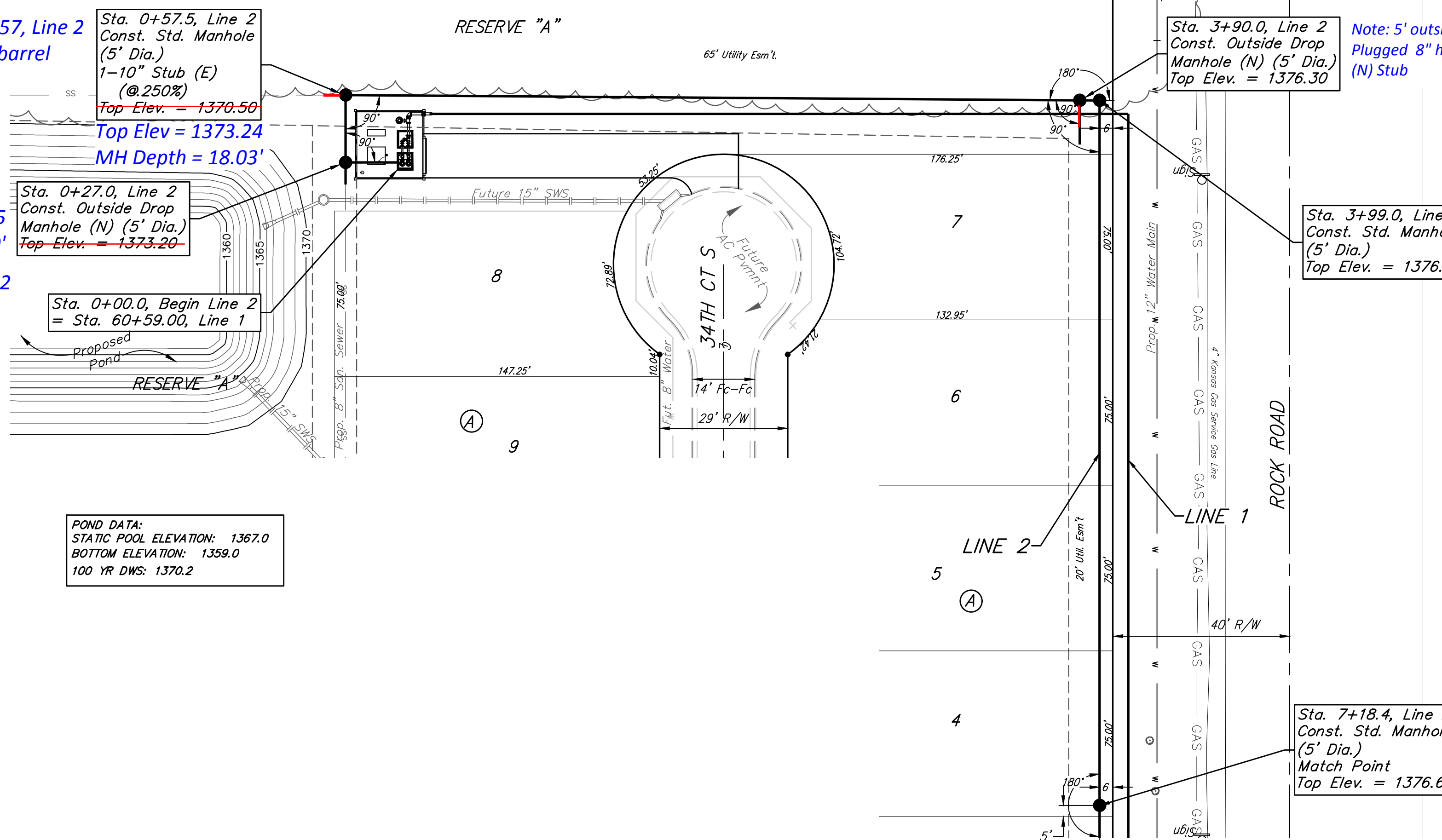
BM #3: "□" on Northeast Cor. Headwall RCP, East of Rock Road and South of Arnold Blvd. Elev. = 1376.10 NAVD88

BM #4: "□" on Top of Curb by Fire Hydrant, South of Concrete Drive at 2800 S. Rock Road Elev. = 1379.84 NAVD88

Note: Sta. 0+57, Line 2 Added extra barrel

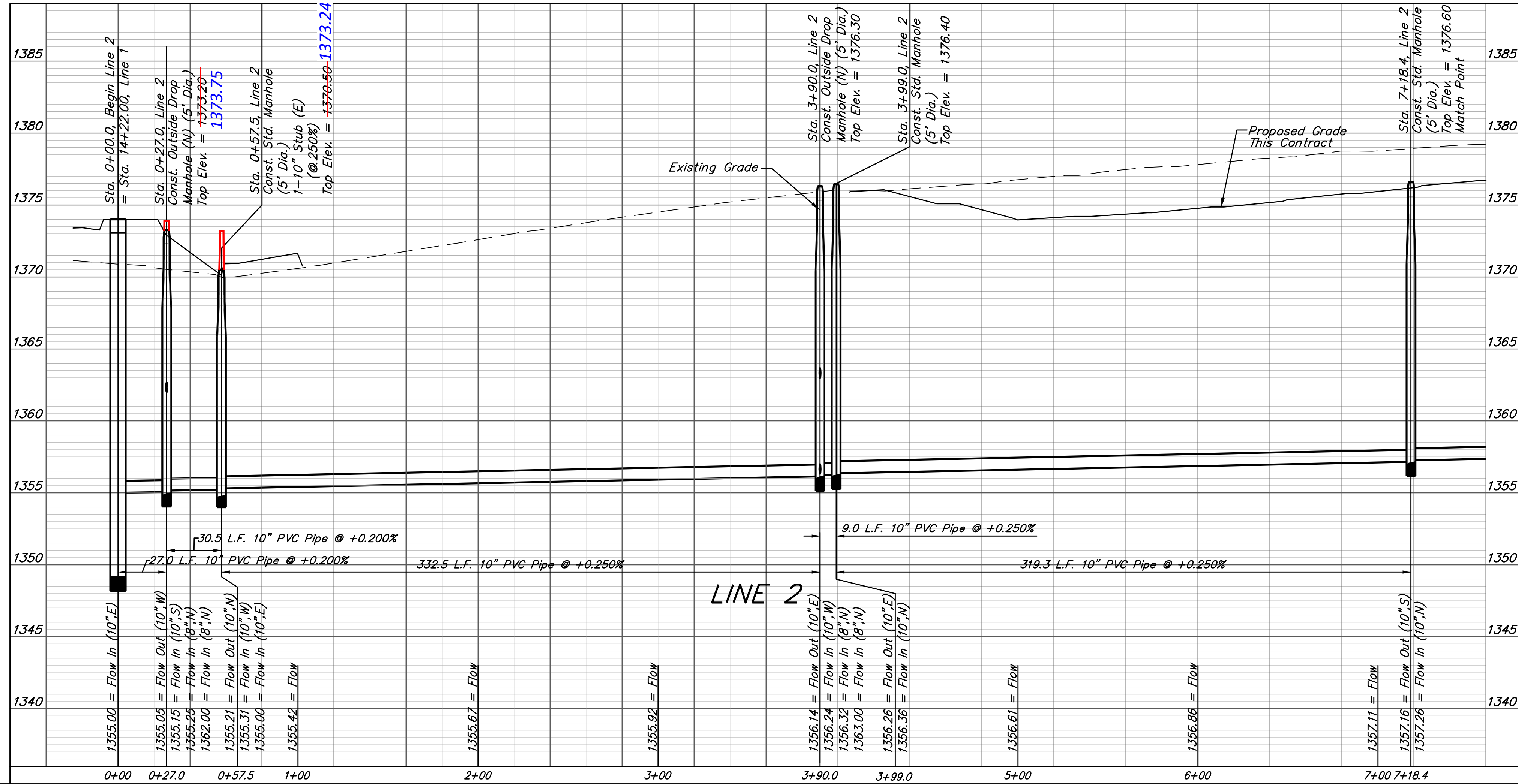
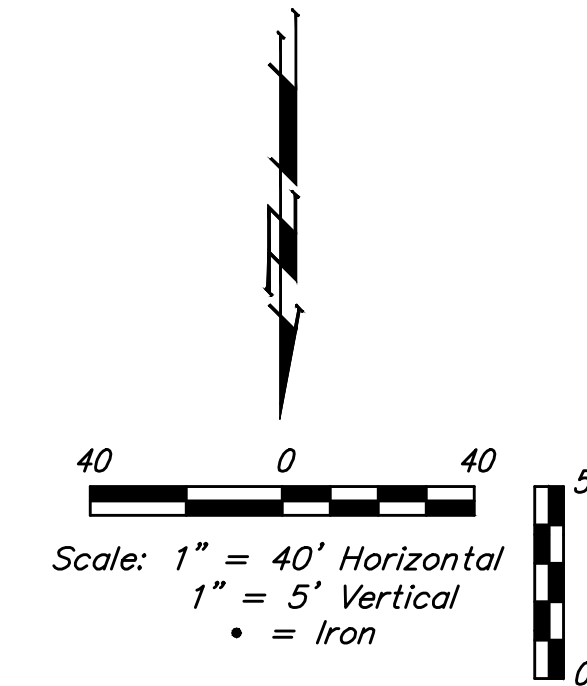
Top Elev = 1373.75
 MH Depth = 18.70'

Note: Sta. 0+57, Line 2 Added extra adjustment ring



POND DATA:
 STATIC POOL ELEVATION: 1367.0
 BOTTOM ELEVATION: 1359.0
 100 YR DWS: 1370.2

Note: 5' outside drop mh was built backwards. Plugged 8" hole looking south. Poured a 4-way invert. (N) Stub



Baughman		Rocky Ford Addition LINE 2 Sanitary Sewer Improvements	
Baughman Company, P.A. 315 Ellis St. Wichita, KS 67211 P 316-262-7271 F 316-262-0149 ENGINEERING SURVEYING PLANNING LANDSCAPE ARCHITECTURE			
PROJECT NUMBER	DESIGN	DMV	DRAWN
REVISIONS:	APPROVED	Noted	DATE
			10/29/17
			SCALE
			Noted
			SHEET
			9 OF 26