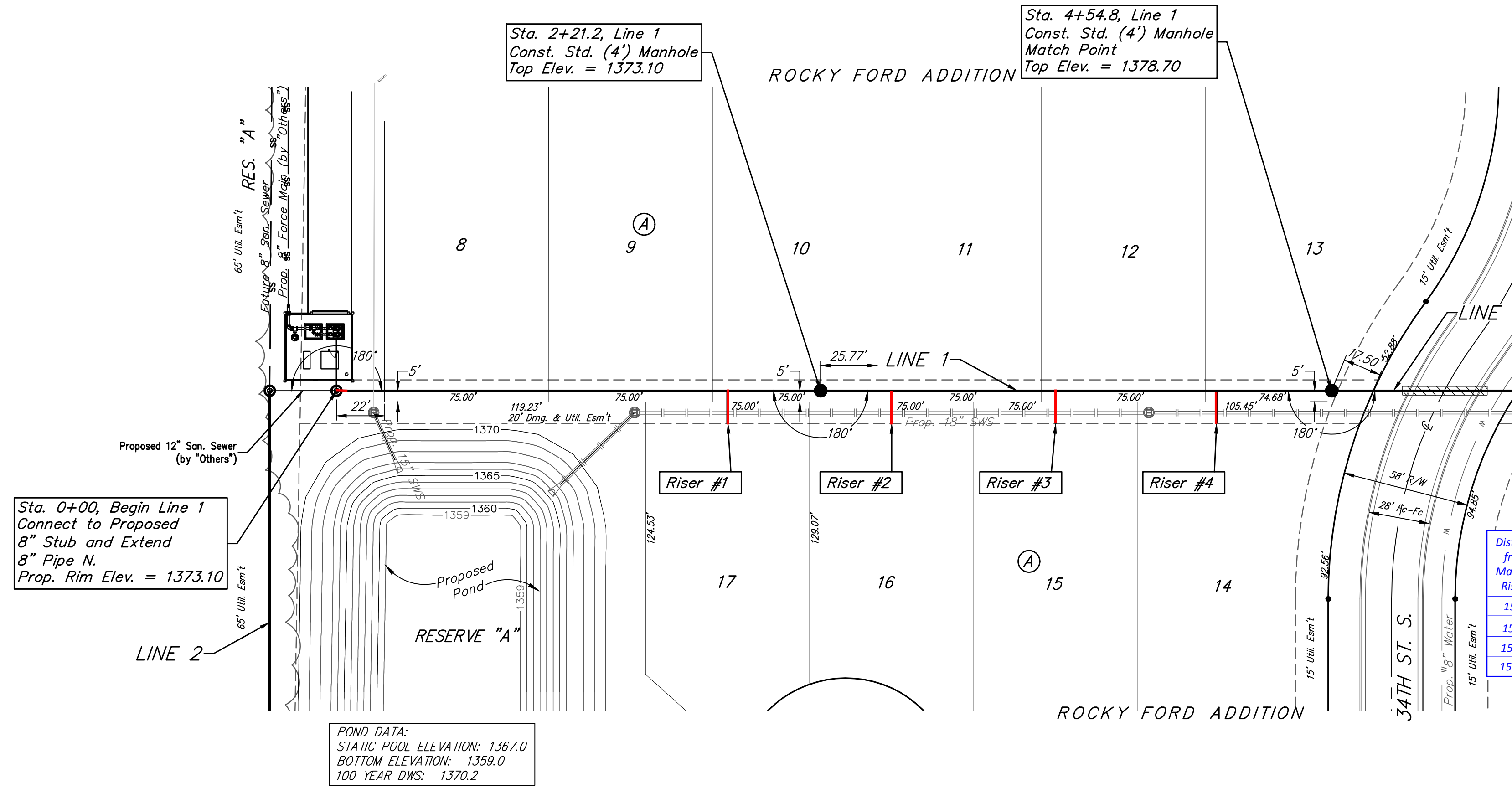


BENCHMARKS
BM #1: City of Wichita Benchmark Disk at South End of Hubguard on the SW Cor. of R.C.B.C., West Side of Rock Road, 706' North-Northwest of the Northwest Corner, of Lot 44, Block A, Rocky Ford Add. Elev. = 1367.92 NAVD88

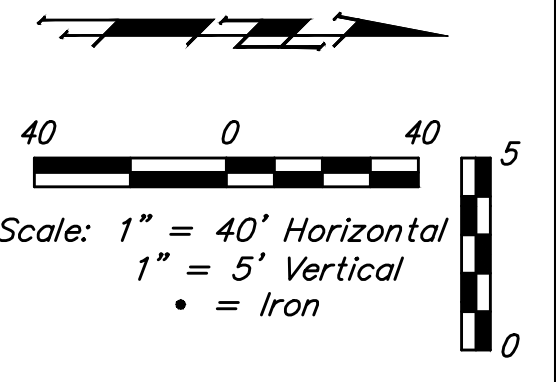
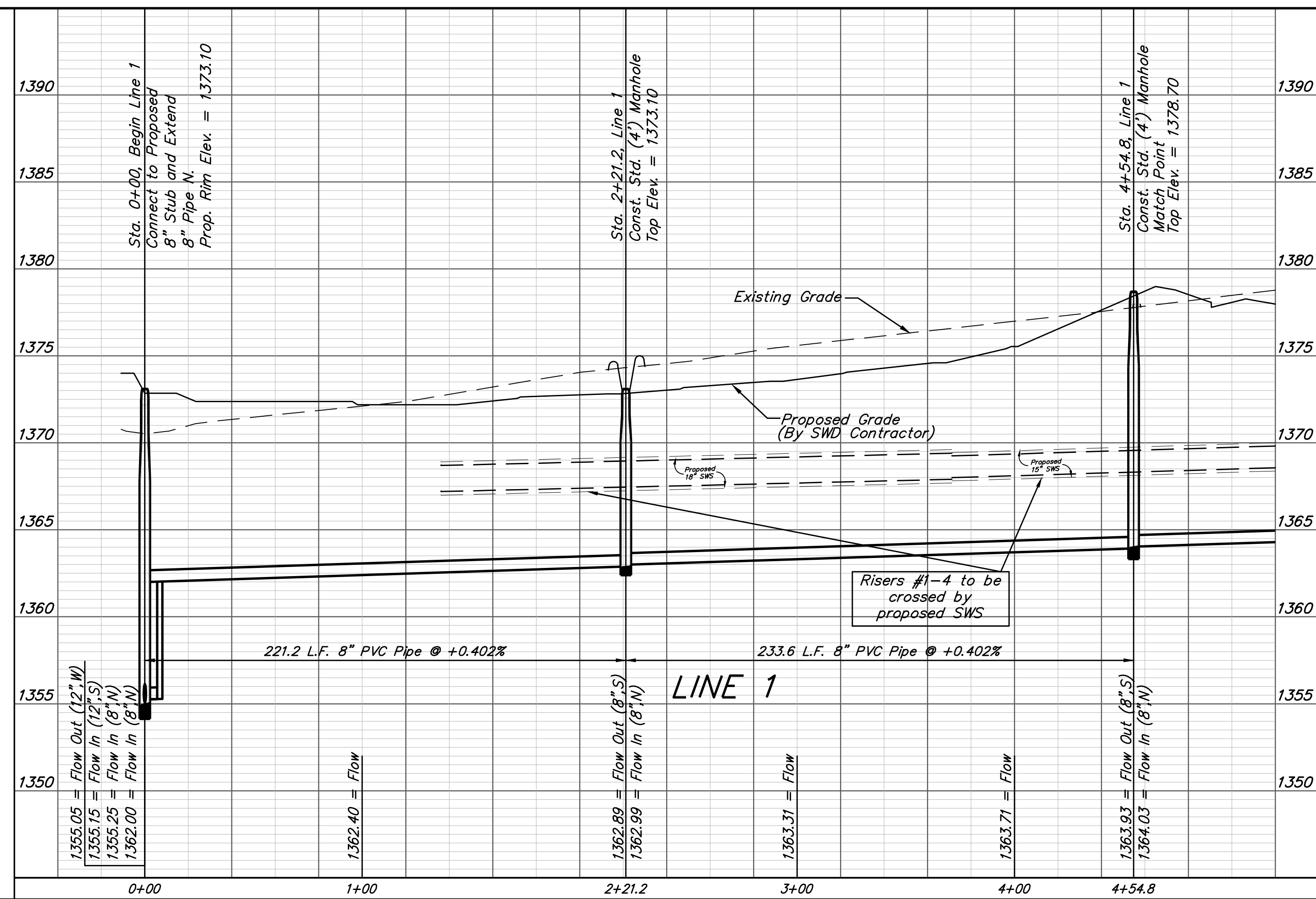
BM #2: "□" on Fence Footing under warning US Airforce Installation Sign West of Rock Road, 400' N. of W $\frac{1}{2}$ Cor. Elev. = 1377.45 NAVD88



SEWER SERVICE TABLE

Distance from Main to Riser	Distance from		NUMBER	TYPE	LOCATION				FOR INFORMATION ONLY	
	Upstream MH	Downstream MH			LOT NO.	BLOCK NO.	LINE NO.	STATION/DIRECTION	APPROXIMATE LENGTH 4" PIPE	VERTICAL
15' Rt.	41'	180'	1	8" X 4" Tee	17	A	1	1+80.2/Rt.	5'	15.0'
15' Rt.	200'	34'	2	8" X 4" Tee	16	A	1	2+55.2/Rt.	5'	15.0'
15' Rt.	125'	109'	3	8" X 4" Tee	15	A	1	3+30.2/Rt.	6'	15.0'
15' Rt.	51'	183'	4	8" X 4" Tee	14	A	1	4+03.7/Rt.	7'	15.0'

NOTE: Vertical Riser Pipe shall be extended to 2' minimum above ground water elevation and 4' maximum below proposed ground elevation.



Baughman

Rocky Road Addition - Phase I

LINE 1

Sanitary Sewer Improvements

Baughman Company, P.A. 315 Ellis St. Wichita, KS 67211 P 316-262-7271 F 316-262-0149
 ENGINEERING | SURVEYING | PLANNING | LANDSCAPE ARCHITECTURE

PROJECT NUMBER 468-84466	DESIGN AEG	DRAWN DHL
REVISIONS:	APPROVED	DATE 10/16/17
	SCALE Noted	
	SHEET	2 OF 16

I:\Projects\Rocky Ford Addition_16-06-P207\Engineering\Phase 1\SS_1611-E594\SS Plans.dwg