

BENCHMARKS
 BM #1: City of Wichita Benchmark Disk at South End of Hubguard on the SW Cor. of R.C.B.C., West Side of Rock Road, 706' North-Northwest of the Northwest Corner, of Lot 44, Block A, Rocky Ford Add. Elev. = 1367.92 NAVD88

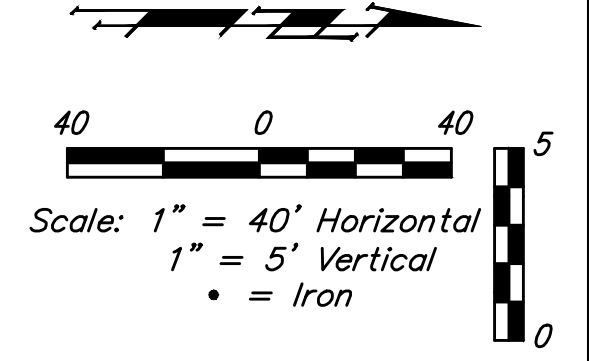
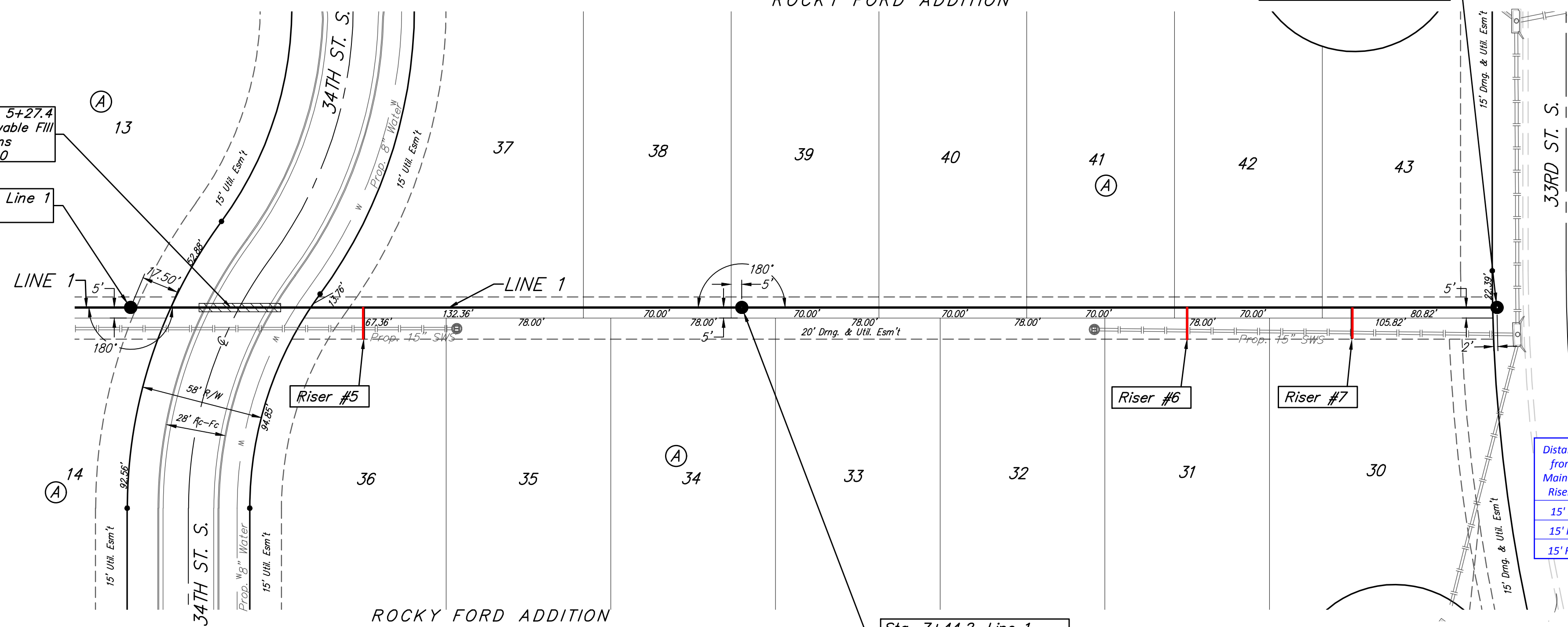
BM #2: "□" on Fence Footing under warning US Airforce Installation Sign West of Rock Road, 400' N. of W₁ Cor. Elev. = 1377.45 NAVD88

Sta. 4+88.7 to Sta. 5+27.4
 Install 38.7 L.F. Flowable Fill per City Specifications
 Fill to Elev. = 1376.0

Sta. 4+54.8, Line 1
 Match Point

Sta. 11+01.9, End Line 1
 Const. Std. (4') Manhole
 Top Elev. = 1375.60

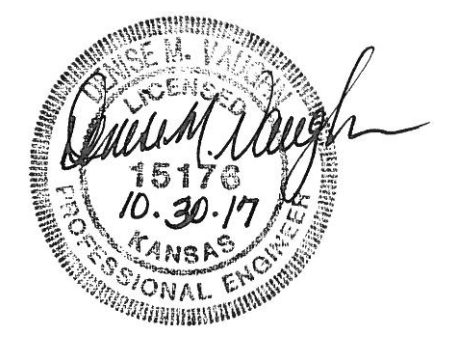
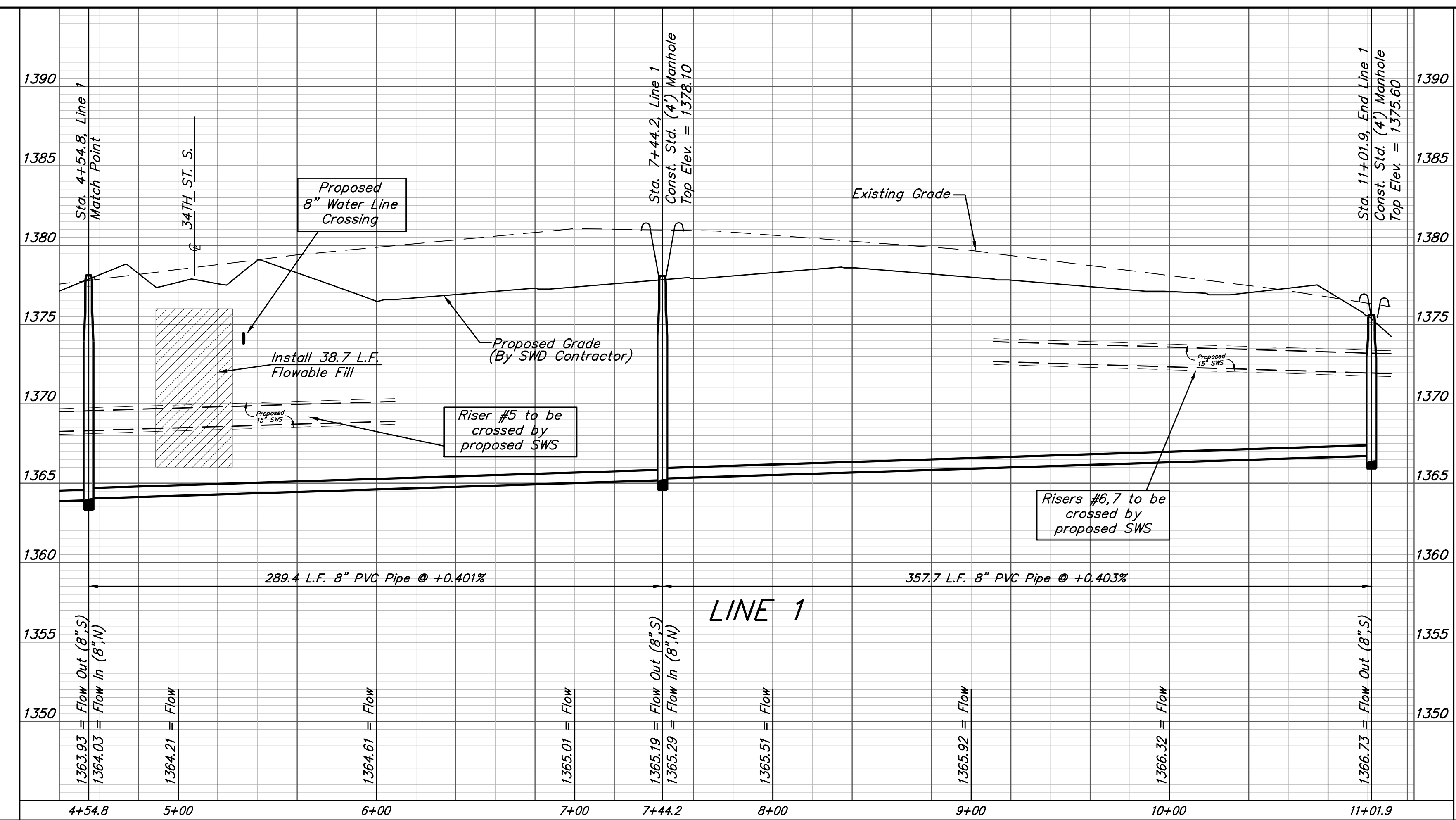
Sta. 7+44.2, Line 1
 Const. Std. (4') Manhole
 Top Elev. = 1378.10



SEWER SERVICE TABLE

Distance from Main to Riser	Distance from		NUMBER	TYPE	LOCATION			FOR INFORMATION ONLY		
	Upstream MH	Downstream MH			LOT NO.	BLOCK NO.	LINE NO.	STATION/DIRECTION	APPROXIMATE LENGTH 4" PIPE	VERTICAL
15' Rt.	178'	112'	5	8" X 4" Tee	36	A	1	5+66.7/Rt.	8.5'	15.0'
15' Rt.	145'	213'	6	8" X 4" Tee	31	A	1	9+56.7/Rt.	7'	15.0'
15' Rt.	67'	291'	7	8" X 4" Tee	30	A	1	10+34.7/Rt.	5.5'	15.0'

NOTE: Vertical Riser Pipe shall be extended to 2' minimum above ground water elevation and 4' maximum below proposed ground elevation.



Baughman Rocky Road Addition - Phase I
LINE 1
 Sanitary Sewer Improvements

Baughman Company, P.A. 315 Ellis St. Wichita, KS 67211 P 316-262-7271 F 316-262-0149
 ENGINEERING | SURVEYING | PLANNING | LANDSCAPE ARCHITECTURE

PROJECT NUMBER: 468-84466 DESIGN: AEG DRAWN: DJL
 APPROVED: DATE: 10/16/17
 REVISIONS: SCALE: Noted SHEET: 3 OF 16

U:\Projects\Rocky Ford Addition_16-06-P207\Engineering\Phase I\SS_1611-E594\SS Plans.dwg