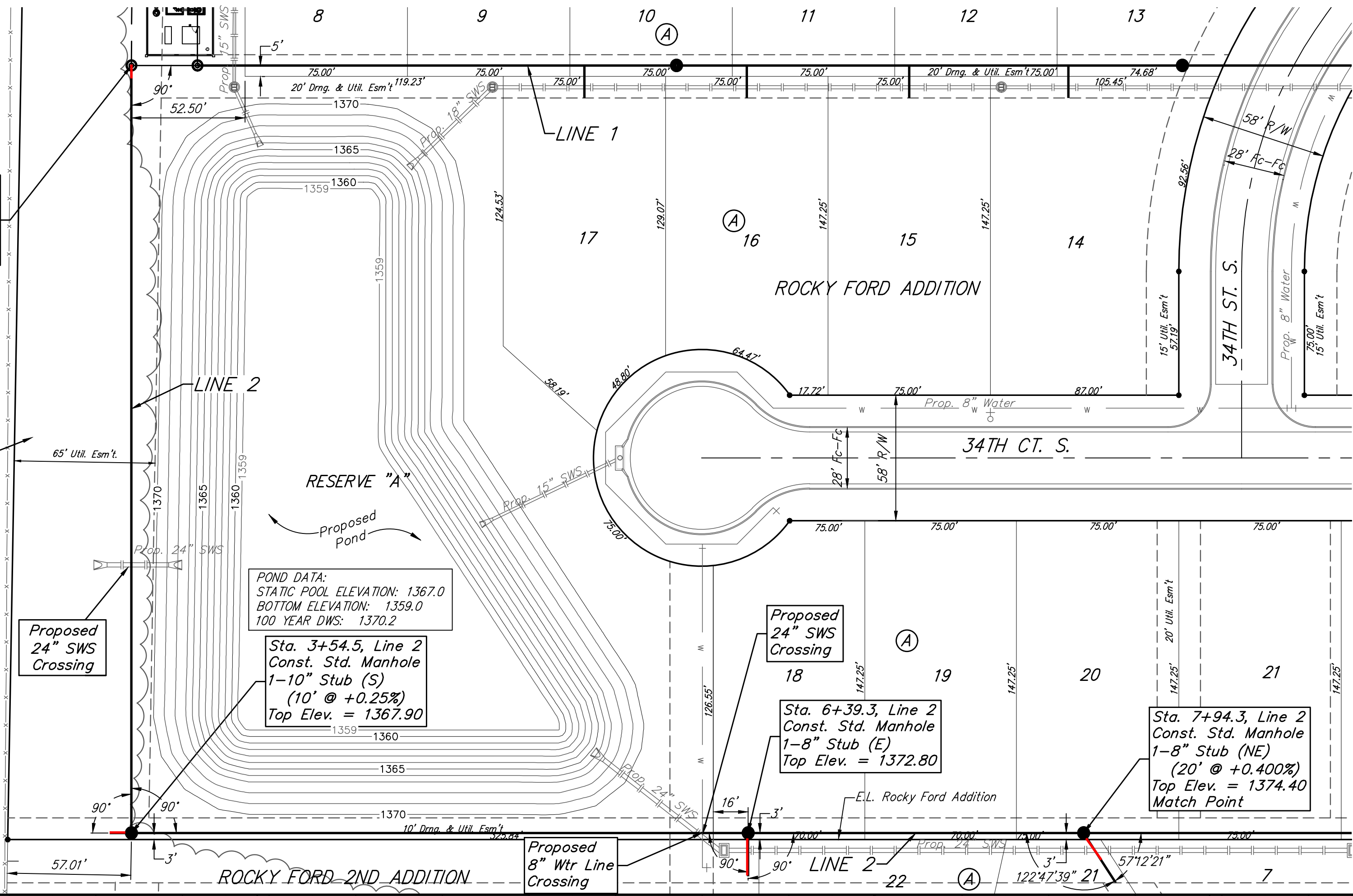


BENCHMARKS
 BM #1: City of Wichita Benchmark Disk at South End of Hubguard on the SW Cor. of R.C.B.C., West Side of Rock Road, 706' North-Northwest of the Northwest Corner, of Lot 44, Block A, Rocky Ford Add. Elev. = 1367.92 NAVD88

BM #2: "□" on Fence Footing under warning US Airforce Installation Sign West of Rock Road, 400' N. of W₁ Cor. Elev. = 1377.45 NAVD88

Contractor to remove existing trees only as necessary for construction. To be paid as lump sum bid item "Site Clearing & Restoration"

Sta. 0+00, Begin Line 2
 Connect to Proposed 10" Stub and Extend 10" Pipe E.
 Prop. Rim Elev. = 1370.10



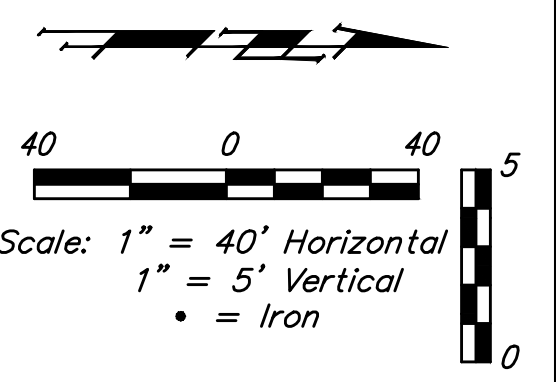
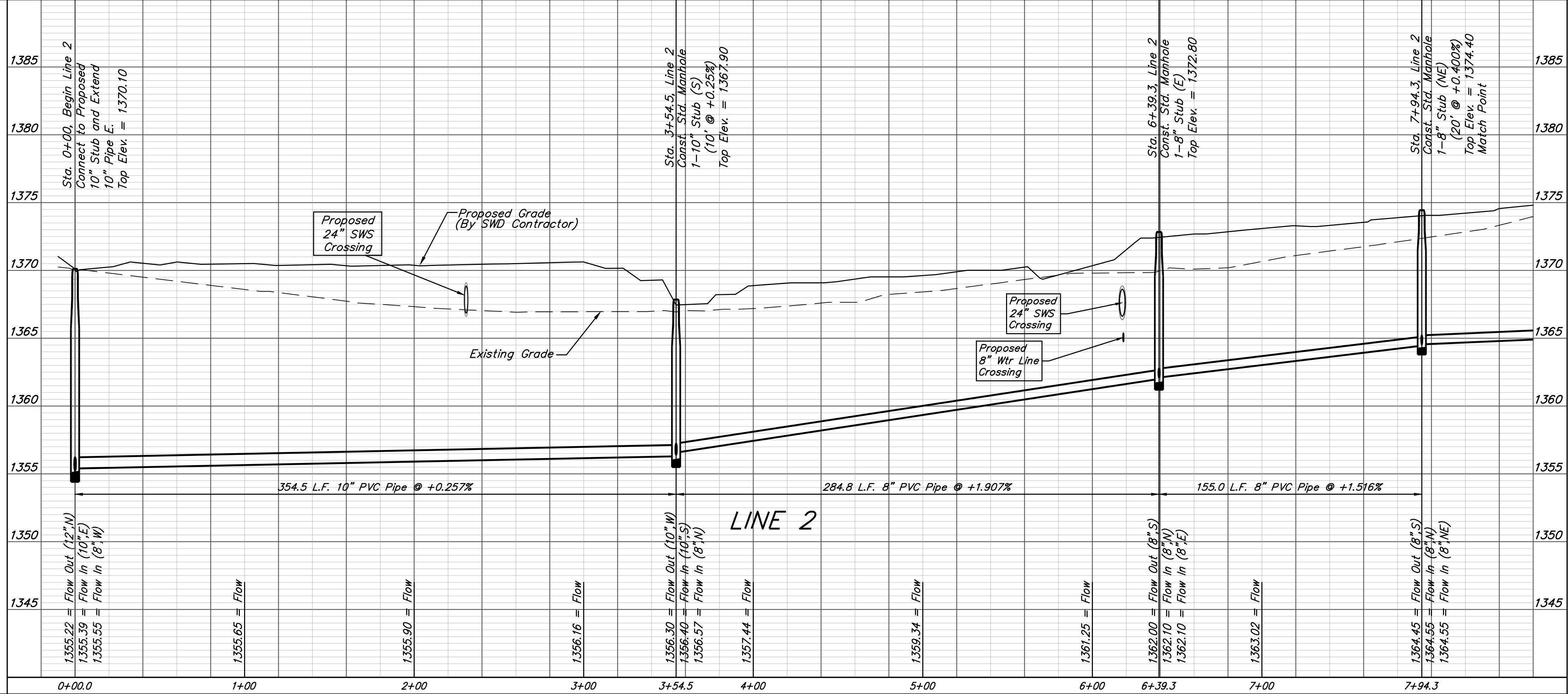
POND DATA:
 STATIC POOL ELEVATION: 1367.0
 BOTTOM ELEVATION: 1359.0
 100 YEAR DWS: 1370.2

Sta. 3+54.5, Line 2
 Const. Std. Manhole 1-10" Stub (S)
 (10' @ +0.25%)
 Top Elev. = 1367.90

Proposed 24" SWS Crossing

Sta. 6+39.3, Line 2
 Const. Std. Manhole 1-8" Stub (E)
 Top Elev. = 1372.80

Sta. 7+94.3, Line 2
 Const. Std. Manhole 1-8" Stub (NE)
 (20' @ +0.400%)
 Top Elev. = 1374.40
 Match Point



Baughman Rocky Road Addition - Phase I
LINE 2
 Sanitary Sewer Improvements

Baughman Company, P.A. 315 Ellis St. Wichita, KS 67211 P 316-262-7271 F 316-262-0149
 ENGINEERING | SURVEYING | PLANNING | LANDSCAPE ARCHITECTURE

PROJECT NUMBER: 468-84466 DESIGN: AEG DRAWN: DJL
 APPROVED: DATE: 10/16/17
 SCALE: Noted
 SHEET: 4 OF 16