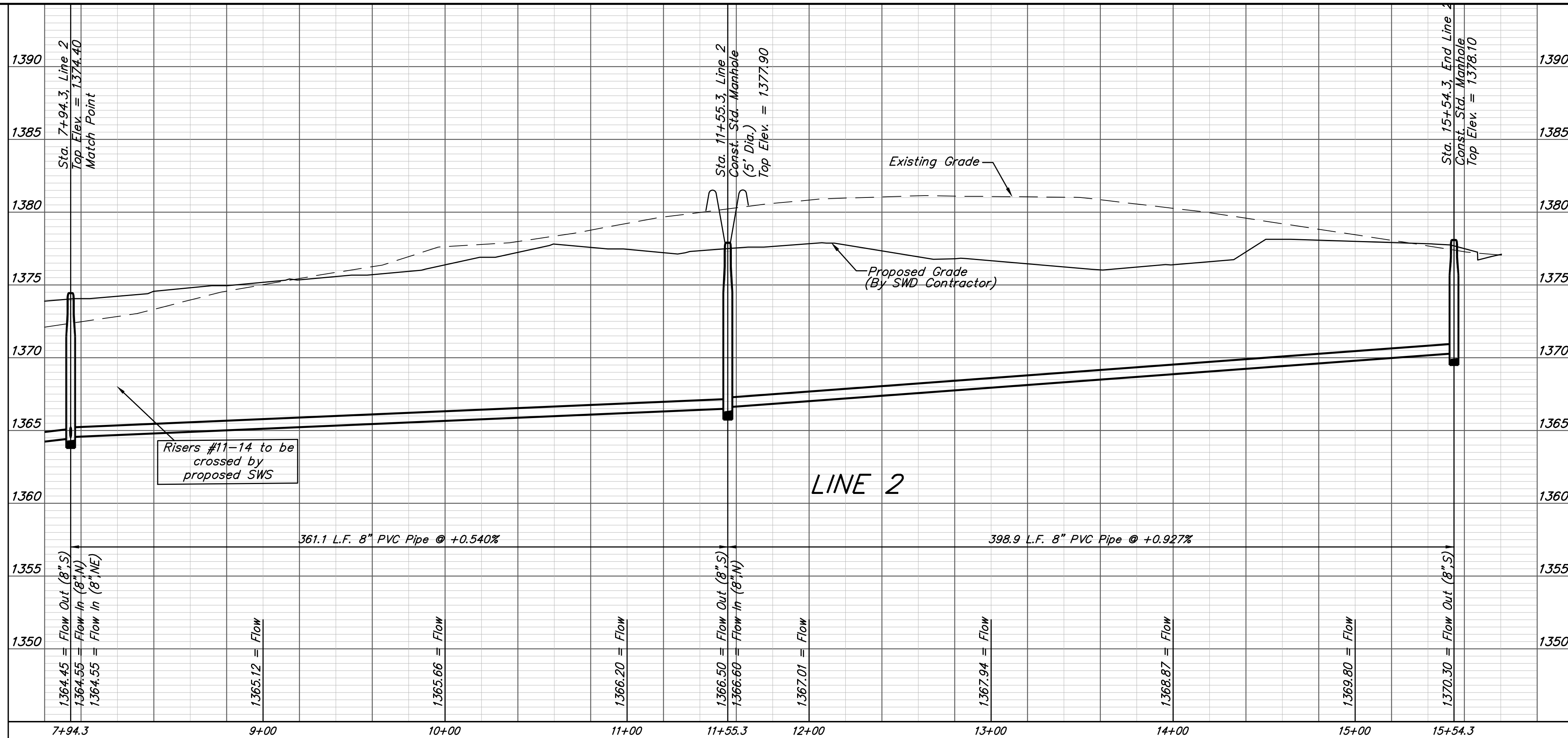
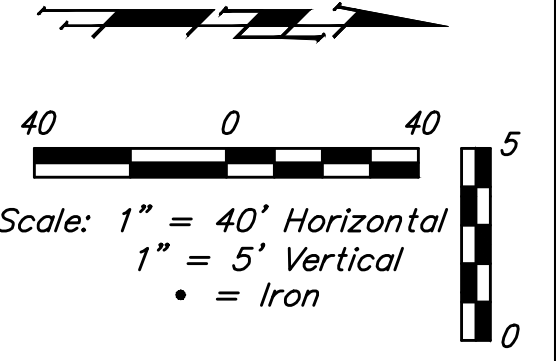
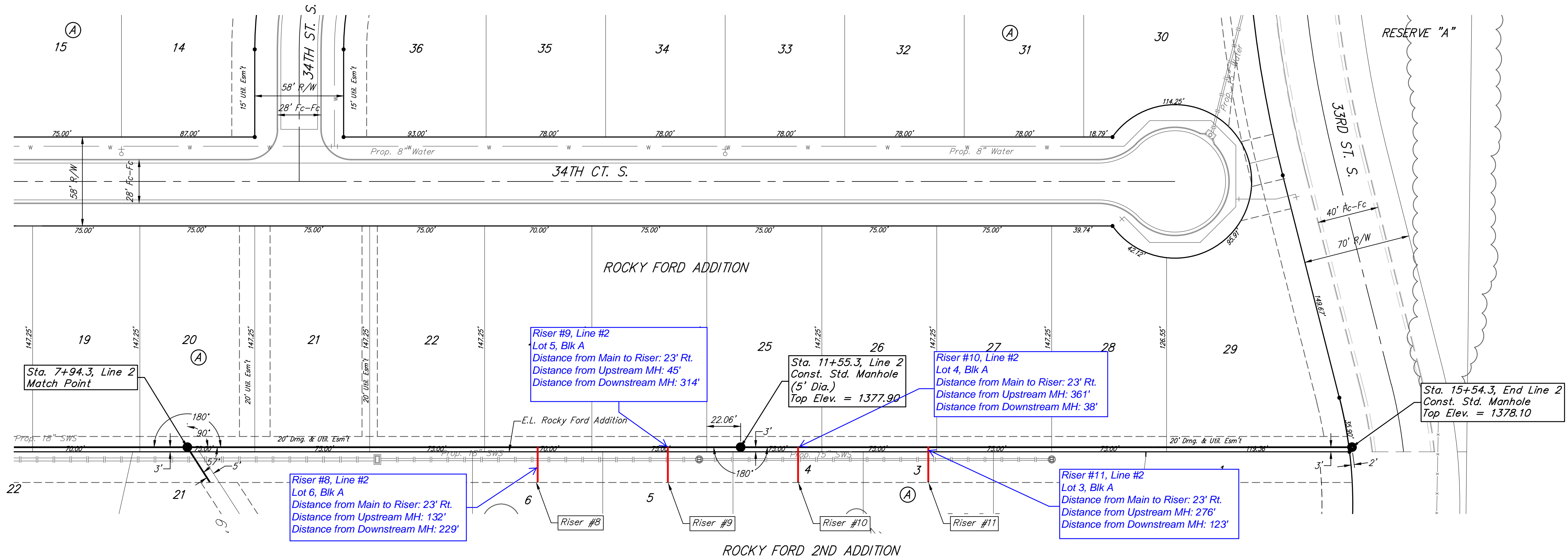


BENCHMARKS
 BM #1: City of Wichita Benchmark Disk at South End of Hubguard on the SW Cor. of R.C.B.C., West Side of Rock Road, 706' North-Northwest of the Northwest Corner, of Lot 44, Block A, Rocky Ford Add. Elev. = 1367.92 NAVD88

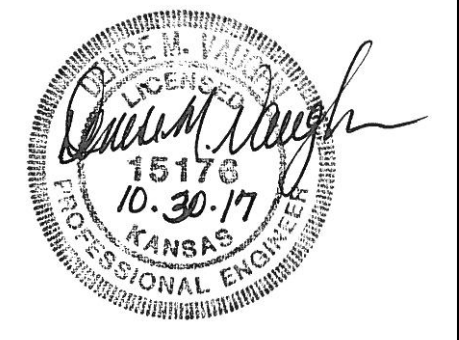
BM #2: "□" on Fence Footing under warning US Airforce Installation Sign West of Rock Road, 400' N. of W₁ Cor. Elev. = 1377.45 NAVD88



SEWER SERVICE TABLE

NUMBER	TYPE	LOCATION				FOR INFORMATION ONLY	
		LOT NO.	BLOCK NO.	LINE NO.	STATION/DIRECTION	APPROXIMATE LENGTH 4" PIPE	
8	8" X 4" Tee	6	A	2	10+23.0/Rt.	8'	23'
9	8" X 4" Tee	5	A	2	11+08.0/Rt.	9.1'	23'
10	8" X 4" Tee	4	A	2	11+93.0/Rt.	9.8'	23'
11	8" X 4" Tee	3	A	2	12+78.0/Rt.	9.5'	23'

NOTE: Vertical Riser Pipe shall be extended to 2' minimum above ground water elevation and 4' maximum below proposed ground elevation.



Baughman Rocky Road Addition - Phase I
LINE 2
 Sanitary Sewer Improvements

Baughman Company, P.A. 315 Ellis St. Wichita, KS 67211 P 316-262-7271 F 316-262-0149
 ENGINEERING | SURVEYING | PLANNING | LANDSCAPE ARCHITECTURE

PROJECT NUMBER: 468-84466 DESIGN: AEG DRAWN: DJL
 APPROVED: [Signature] DATE: 10/16/17
 REVISIONS: SCALE: Noted SHEET: 5 OF 16