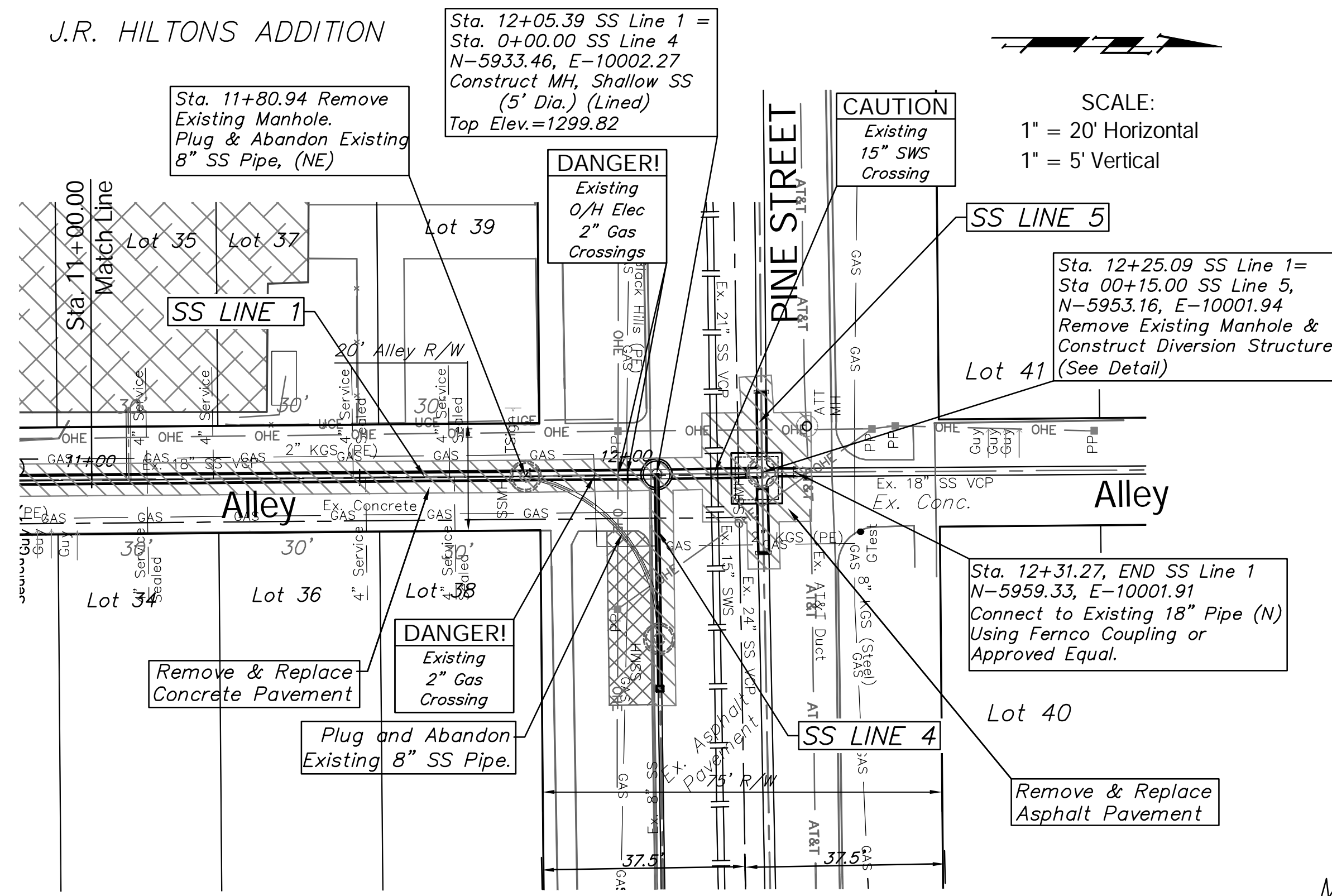
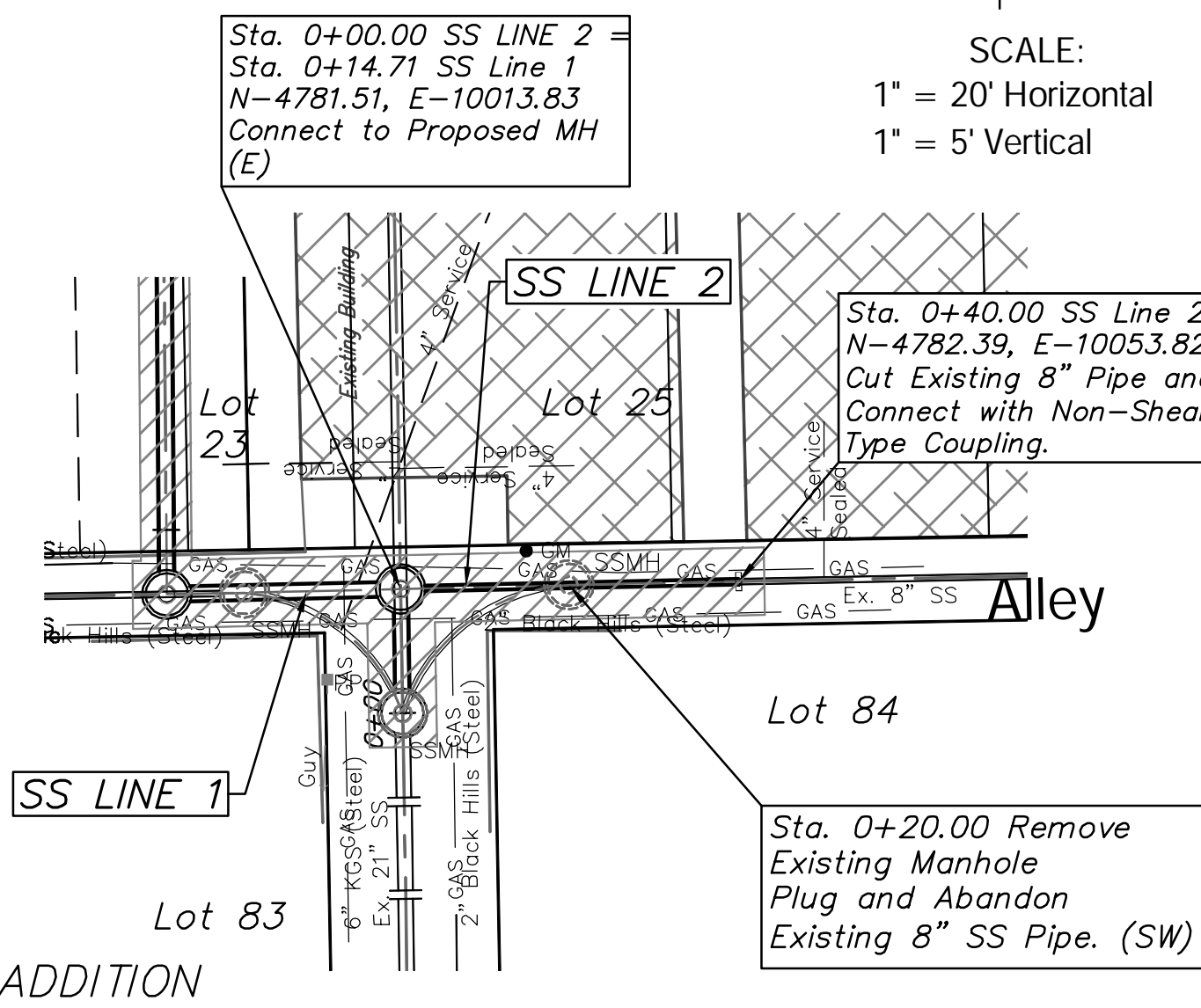


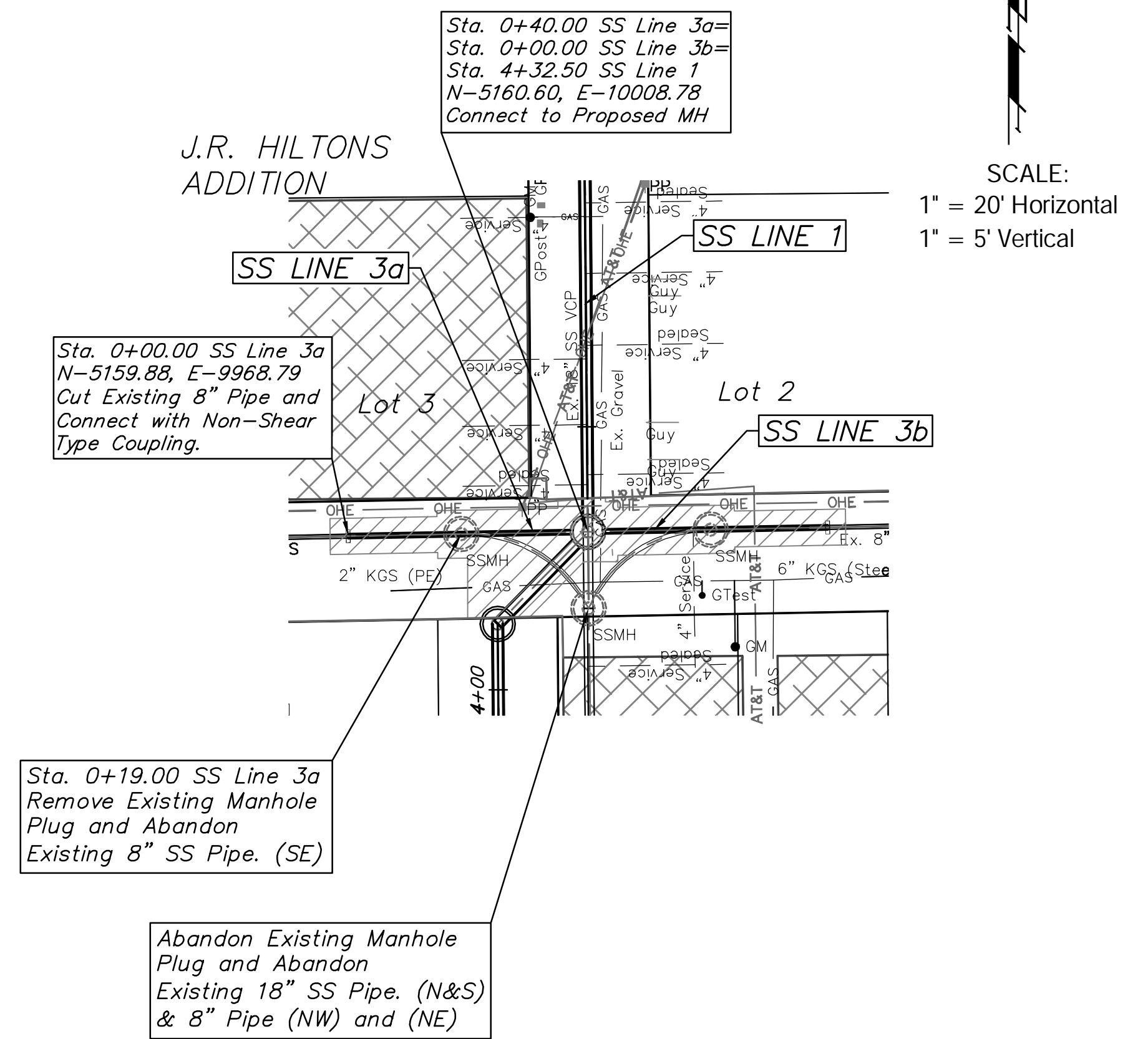
J.R. HILTONS ADDITION



SCALE:
1" = 20' Horizontal
1" = 5' Vertical



SCALE:
1" = 20' Horizontal
1" = 5' Vertical



SCALE:
1" = 20' Horizontal
1" = 5' Vertical

NOTE:
Pine Street may be Closed to Through Traffic During Construction. Do Not Close Elm St. & Pine St. at the Same Time.

BUILT PER PLAN

