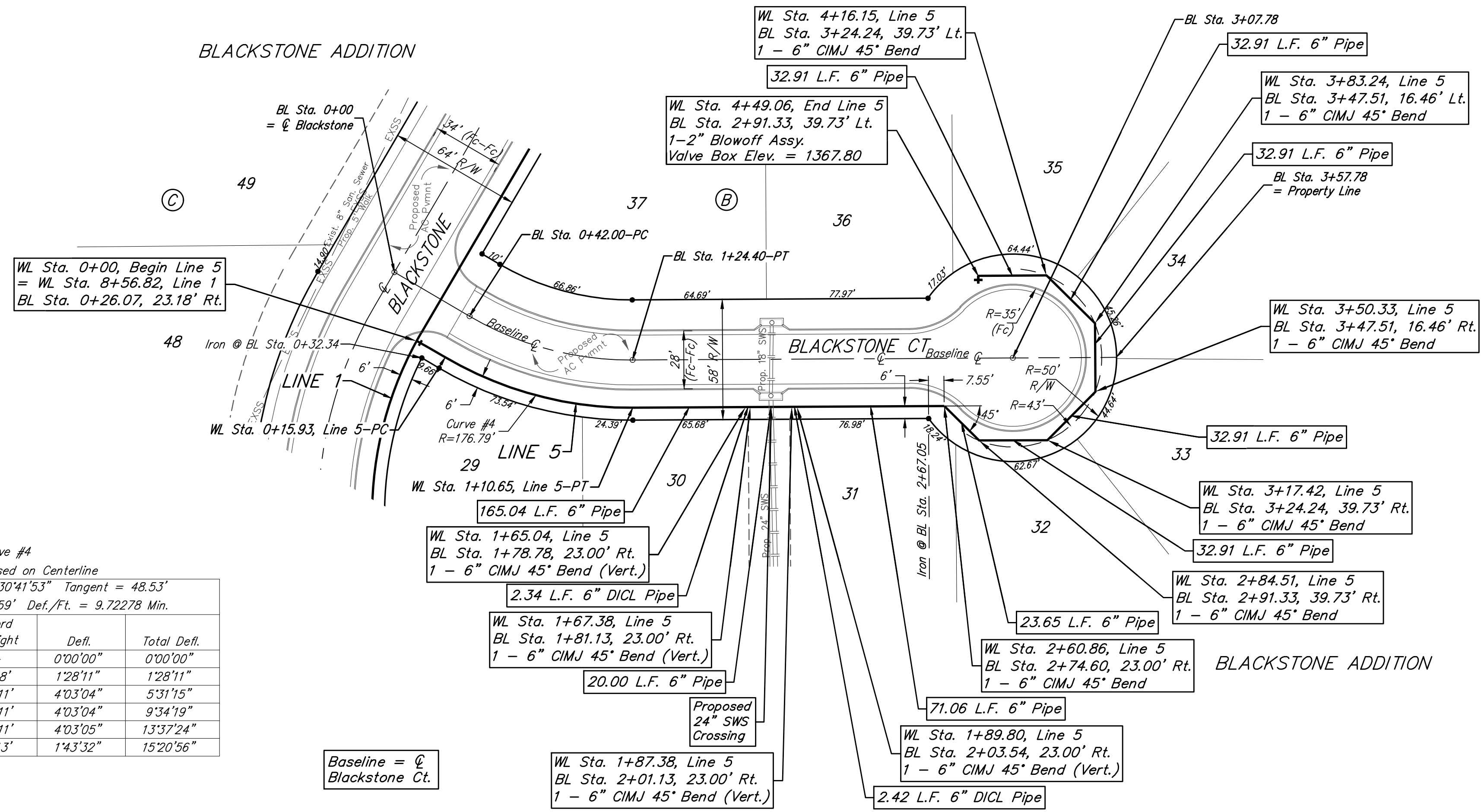


BENCHMARKS:
 BM #1: Railroad spike in HLP
 2' West of center Sec. 11,
 T-27-S, R-2-W
 (S. Face of HLP)
 Elev. = 1367.70 NGVD29

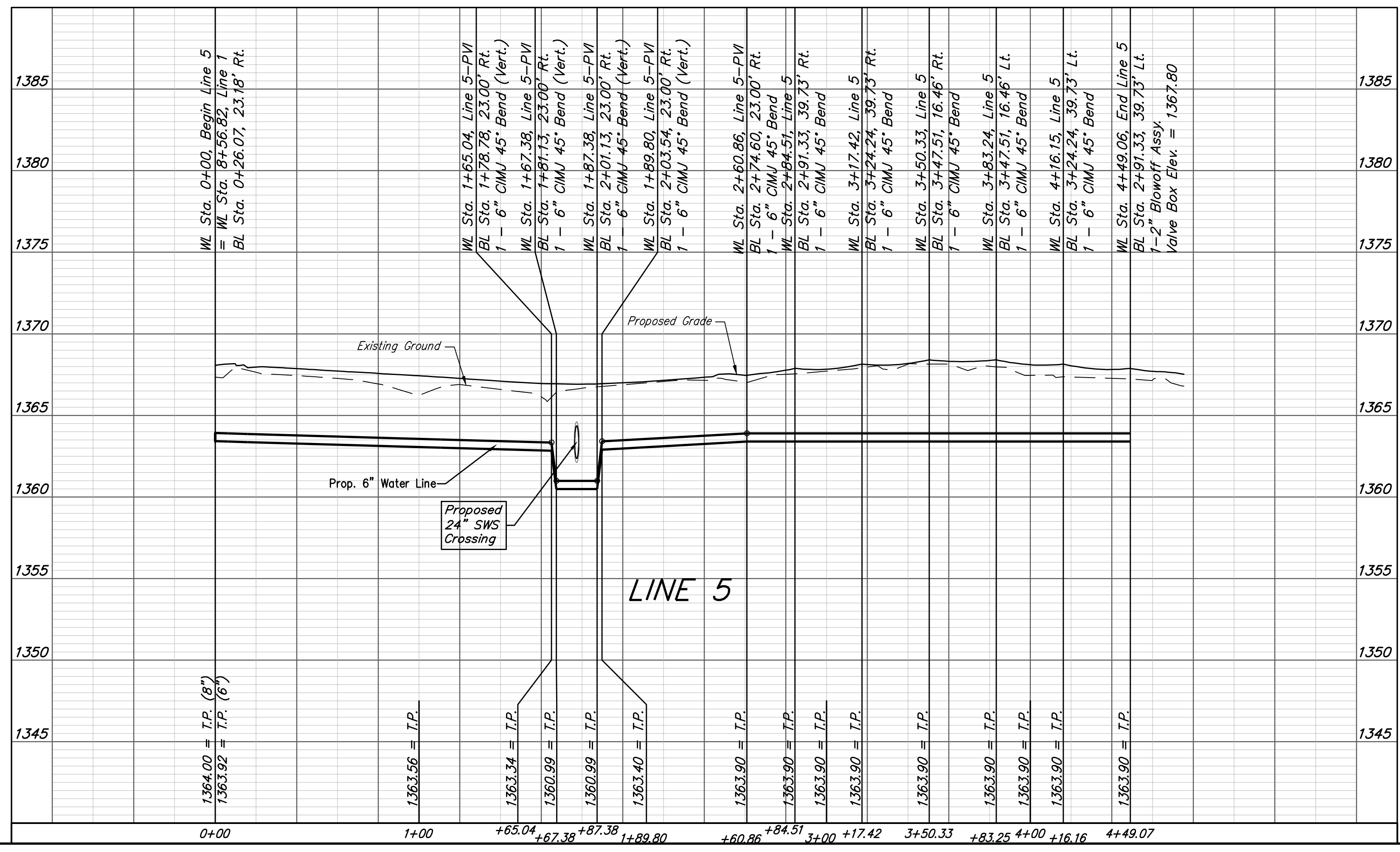
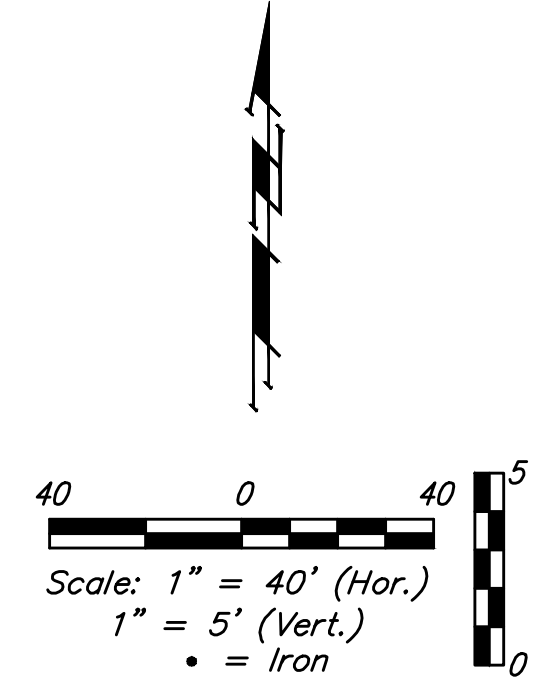
BM #2: "□" Cut in top of
 curb adjacent to the Southwest
 Corner, Lot 11, Block B,
 Blackstone Addition
 Elev. = 1369.85 NGVD29


BLACKSTONE ADDITION



Curve #4
 Curve Data Based on Centerline
 Rad. = 176.79' Delta = 30°41'53\" Tangent = 48.53'
 Arc = 94.72' L.C. = 93.59' Def./Ft. = 9.72278 Min.

Station	Arc	Chord 8' Right	Defl.	Total Defl.
0+15.93	-	-	0°00'00"	0°00'00"
0+25.00	9.07'	9.48'	1°28'11"	1°28'11"
0+50.00	25.00'	26.11'	4°03'04"	5°31'15"
0+75.00	25.00'	26.11'	4°03'04"	9°34'19"
1+00.00	25.00'	26.11'	4°03'05"	13°37'24"
1+10.65	10.65'	11.13'	1°43'32"	15°20'56"





Baughman

Blackstone Addition - Phase III
LINE 5
 Water Distribution System

Baughman Company, P.A. 315 Ellis St. Wichita, KS 67211 P 316-262-7271 F 316-262-0149
 ENGINEERING | SURVEYING | PLANNING | LANDSCAPE ARCHITECTURE

PROJECT NUMBER 448-90187	DESIGN NBW	DRAWN JAK
REVISIONS:	APPROVED	DATE 7/26/18
SCALE Noted		SHEET

8 OF 16



C:\Projects\Blackstone\Engineering\Phase 3\WTR 1803E953\WTR PLANS.dwg