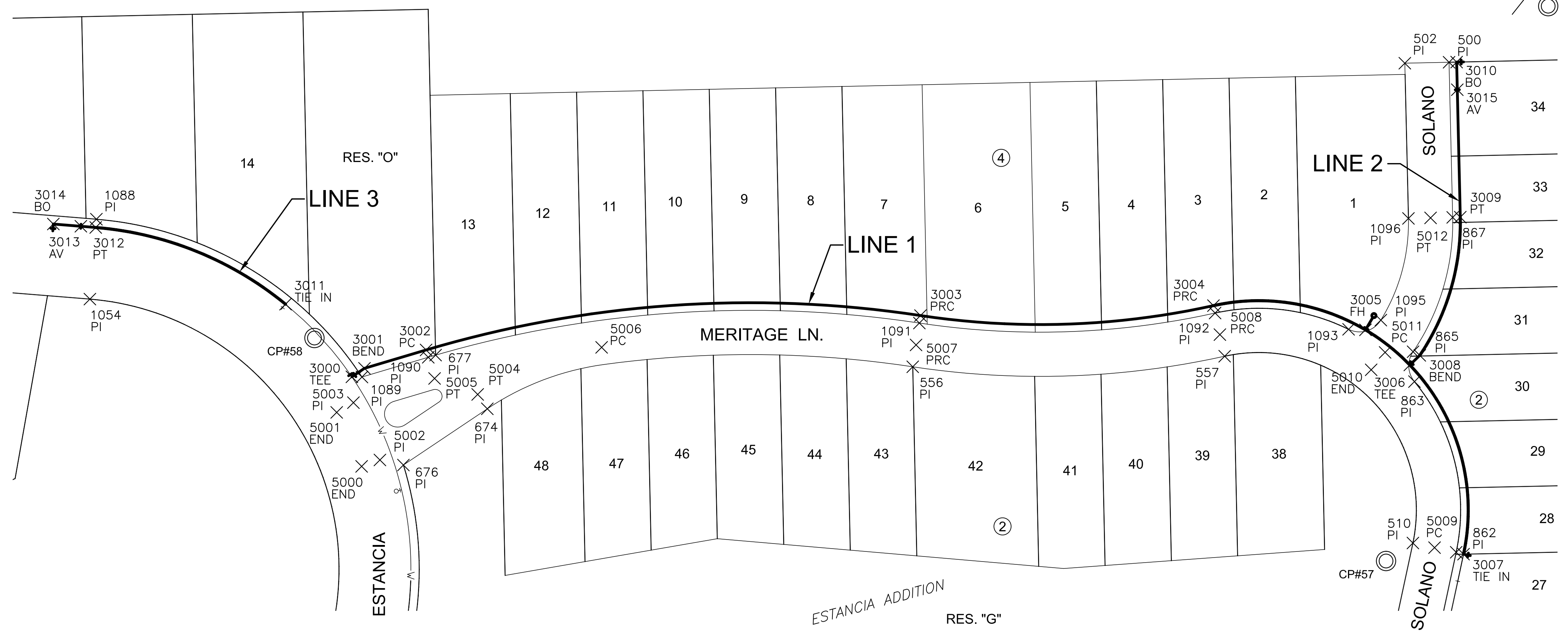


J:\PROJECTS\2018\14010462\_PREMIER\_ESTANCIA\DWG\RESIDENTIAL\PH3\14462\_RES\_CB\_01\_PHD.DWG  
 PLOTTED: Friday, August 03, 2018 @ 02:24PM



### CONTROL POINTS

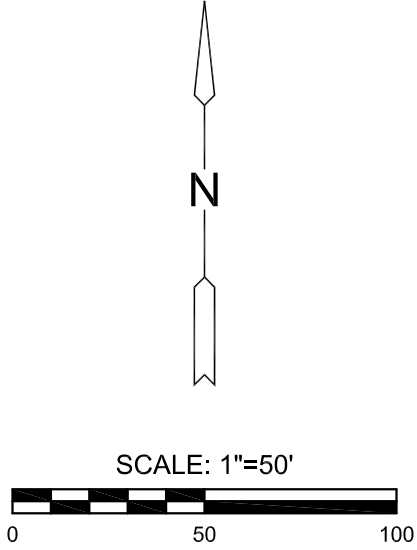
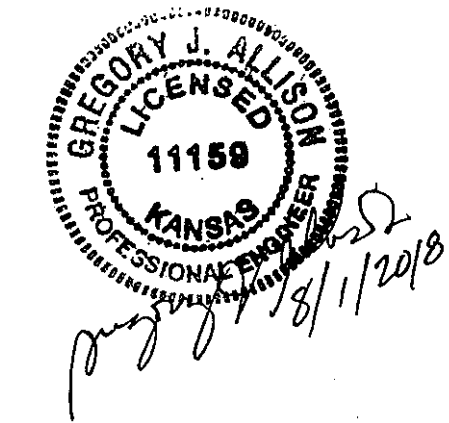
DATUM:  
 1) The Project Horizontal Datum is based on the NAD83, Kansas State Plane Coordinate System, South Zone, (US Survey Feet Definition), with a Combined Adjustment Factor (CAF) of 1.000120014. All coordinate and dimensions shown on these plans are modified to Ground values.

The following equations can be used for conversion:  
 Ground Coordinates to State Plane Coordinates = Ground x 1/CAF  
 State Plane Coordinates to Ground Coordinates = State Plane x CAF

2) The Vertical Datum used is NAVD88.

CONTROL:	Pt. No.	North	East	Elev.	Description
	50	1711490.124	1624127.580	1335.951	5/8" rebar w/ 2" aluminum MKEC ID cap
	51	1711268.791	1625517.702	1337.043	5/8" rebar w/ 2" aluminum MKEC ID cap
	52	1710171.016	1625356.019	1334.120	Chiseled "X" on the corner of a chiseled square
	53	1710142.067	1624443.448	1333.497	City of Wichita Disc
	54	1710213.104	1623405.099	1332.494	5/8" rebar w/ 2" aluminum MKEC ID cap
	55	1710866.554	1623388.674	1332.710	5/8" rebar w/ 2" aluminum MKEC ID cap
	56	1710879.252	1623983.524	1333.391	5/8" rebar w/ 2" aluminum MKEC ID cap
	57	1710607.210	1625354.120	1334.48	PK-Nail w/ MKEC ID washer drilled into top of curb
	58	1710768.550	1624579.040	1333.63	PK-Nail w/ MKEC ID washer drilled into top of curb

UTILITIES:  
 The underground utilities shown hereon were marked in the field by the utility owners in response to Kansas One Call Ticket Numbers: 17124313, 17124360, 18165399, 18165406, and 18165411. The surveyor makes no guarantee that the underground utilities shown comprise all such utilities in the area, either in service or abandoned. The surveyor further does not warrant that the underground utilities shown are in the exact location indicated although he does certify that they are located as accurately as possible from information available. The surveyor has not physically located the underground utilities.



PLAT POINTS			
Point #	Northing	Easting	Desc.
500	1710968.02	1625399.69	PI
502	1710967.33	1625367.70	PI
509	1710455.21	1625338.27	PI
510	1710620.23	1625373.56	PI
511	1710379.97	1625328.49	PI
513	1710362.90	1625312.10	PI
540	1710255.13	1625378.27	PI
552	1710314.35	1625329.99	PI
553	1710330.58	1625310.28	PI
555	1710248.81	1625340.88	PI
556	1710747.72	1625011.78	PI
557	1710755.37	1625237.41	PI
572	1710341.80	1625208.98	PI
588	1710311.38	1625218.90	PI
604	1709986.55	1625379.64	PI
608	1710124.38	1625403.70	PI
610	1709965.02	1625380.96	PI
616	1709766.23	1625422.35	PI
620	1709861.20	1625420.32	PI
649	1709937.33	1625145.08	PI
650	1709939.27	1625235.67	PI
651	1709948.51	1624984.70	PI
657	1709765.54	1625390.36	PI
658	1710116.90	1625372.59	PI
674	1710717.33	1624704.08	PI
676	1710676.64	1624643.40	PI
677	1710756.17	1624666.69	PI

PLAT POINTS			
Point #	Northing	Easting	Desc.
702	1710340.34	1624944.70	PI
703	1710360.40	1624770.79	PI
707	1710359.85	1624763.38	PI
708	1710376.47	1624744.09	PI
718	1710372.77	1624694.23	PI
733	1710328.49	1624773.16	PI
735	1710309.80	1624935.13	PI
737	1710457.10	1624609.91	PI
738	1710334.47	1624525.32	PI
750	1709678.19	1624658.41	PI
784	1709680.97	1624788.38	PI
785	1709969.07	1624857.85	PI
786	1709933.43	1624683.98	PI
788	1709913.18	1624652.04	PI
789	1709934.41	1624635.14	PI
801	1709952.22	1624533.91	PI
804	1710008.43	1624567.24	PI
809	1710322.77	1624691.94	PI
845	1709708.28	1624787.80	PI
846	1709866.85	1624703.94	PI
847	1709885.68	1624719.95	PI
849	1709936.60	1624858.24	PI
850	1709916.93	1624979.58	PI
851	1709905.33	1625145.77	PI
852	1709907.28	1625236.35	PI
853	1709941.39	1625336.77	PI
855	1709937.62	1625361.87	PI

PLAT POINTS			
Point #	Northing	Easting	Desc.
856	1709860.52	1625388.32	PI
857	1710240.86	1625375.70	PI
859	1710449.83	1625375.81	PI
861	1710464.03	1625372.88	PI
862	1710613.54	1625404.85	PI
863	1710737.02	1625374.67	PI
865	1710758.60	1625373.66	PI
867	1710855.80	1625402.32	PI
882	1710994.65	1624116.17	PI
892	1710995.90	1624174.36	PI
979	1710355.28	1623524.41	PI
984	1710704.11	1623496.20	PI
985	1710735.56	1623535.06	PI
986	1710677.67	1623538.63	PI
1004	1709915.15	1623519.64	PI
1043	1710835.86	1624214.74	PI
1044	1710827.62	1624207.43	PI
1046	1710739.52	1623964.85	PI
1048	1710748.80	1623749.94	PI
1049	1710690.91	1623753.51	PI
1050	1710682.15	1623956.31	PI
1051	1710789.12	1624250.80	PI
1052	1710811.78	1624270.92	PI
1053	1710805.53	1624307.41	PI
1054	1710796.68	1624416.66	PI
1055	1710490.03	1624562.17	PI
1056	1710367.41	1624477.58	PI

PLAT POINTS			
Point #	Northing	Easting	Desc.
1057	1710356.01	1624470.09	PI
1059	1710373.71	1624333.99	PI
1061	1710380.15	1624103.80	PI
1063	1710388.40	1623717.11	PI
1065	1710379.86	1623567.95	PI
1066	1710322.16	1623561.86	PI
1067	1710331.43	1623727.97	PI
1068	1710323.69	1624090.52	PI
1069	1710316.59	1624344.09	PI
1070	1710304.09	1624444.15	PI
1071	1709997.25	1624496.76	PI
1072	1709993.08	1624492.73	PI
1074	1709945.59	1624353.19	PI
1076	1709940.41	1624073.92	PI
1078	1709939.28	1623782.13	PI
1080	1709947.72	1623557.59	PI
1081	1709889.94	1623562.82	PI
1082	1709881.91	1623773.64	PI
1083	1709883.10	1624082.85	PI
1084	1709887.99	1624346.38	PI
1085	1709956.66	1624538.19	PI
1086	1709691.38	1624658.13	PI
1087	1710863.34	1624312.09	PI
1088	1710854.49	1624421.34	PI
1089	1710740.32	1624613.42	PI
1090	1710754.61	1624661.38	PI
1091	1710779.36	1625016.58	PI

PLAT POINTS			
Point #	Northing	Easting	Desc.
1092	1710786.61	1625230.48	PI
1093	1710774.82	1625327.05	PI
1095	1710781.48	1625350.37	PI
1096	1710855.05	1625370.33	PI

PAVING POINTS			
Point #	Northing	Easting	Desc.
5000	1710675.67	1624613.19	END
5001	1710714.73	1624595.16	END
5002	1710680.30	1624626.40	PI
5003	1710721.79	1624607.25	PI
5004	1710727.71	1624697.12	PT
5005	1710739.27	1624665.95	PT
5006	1710761.77	1624786.76	PC
5007	1710763.54	1625014.18	PRC
5008	1710770.99	1625233.94	PRC
5009	1710616.88	1625389.21	PC
5010	1710745.53	1625343.35	END
5011	1710758.13	1625353.44	PC
5012	1710855.43	1625386.33	PT

WATER POINTS			
Point #	Northing	Easting	Desc.
3000	1710740.43	1624606.14	TEE
3001	1710746.60	1624615.24	BEND
3002	1710759.88	1624659.81	PC
3003	1710784.79	1625017.40	PRC
3004	1710791.98	1625229.29	PRC
3005	1710774.45	1625339.24	FH
3006	1710749.04	1625371.32	TEE
3007	1710612.16	1625410.18	TIE IN
3008	1710755.97	1625378.53	BEND
3009	1710855.93	1625407.82	PT
3010	1710968.15	1625405.19	BO
3011	1710793.03	1624558.15	TIE IN
3012	1710848.51	1624420.86	PT
3013	1710849.38	1624410.12	AV
3014	1710850.99	1624390.19	BO
3015	1710948.15	1625405.66	AV

EVERY ATTEMPT HAS BEEN MADE TO INSURE ALL COORDINATE VALUES SHOWN ARE AN ACCURATE AND TRUE REPRESENTATION OF THE CURRENT PLANS. ALL VALUES ARE TO BE CONFIRMED WITH THE FINAL SIGNED PLAN SET BEFORE USE.



WATER DISTRIBUTION PLANS FOR  
**ESTANCIA ADDITION**  
 PHASE 3A

©2018 MKEC Engineering All Rights Reserved www.mkec.com  
 These drawings and their contents, including, but not limited to, all concepts, designs, & lists are the exclusive property of MKEC Engineering (MKEC), and may not be used or reproduced in any way without the express consent of MKEC.

### BUBBLE MAP

PROJECT NO.	448-90695	
DATE	JUNE 2018	
SCALE	1" = 50'	
DESIGNED	DRAWN	CHECKED
DFL	JWC	GJA
NO.	REVISION	DATE
SHEET NO.	05 OF 12	