

WATER DISTRIBUTION SYSTEM
to serve

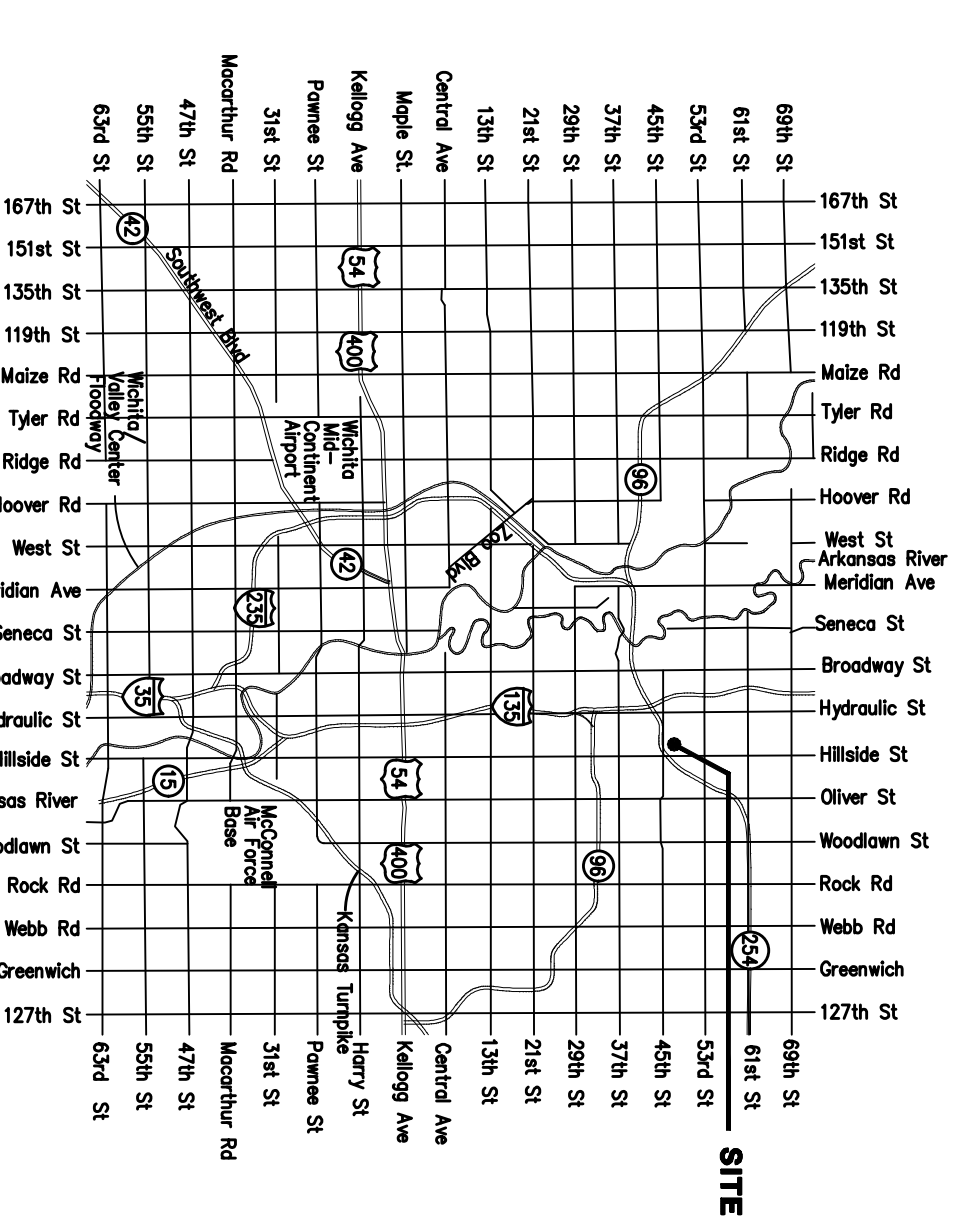
FALCON FALLS 2ND ADDITION

PHASE 4A

CITY OF WICHITA, KANSAS

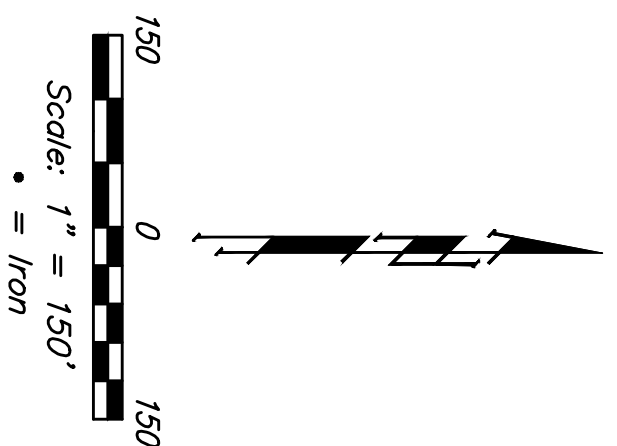
Gary Janzen, P.E. City Engineer
Project Number
448 - 90109
O.C.A. Number
735611

VICINITY MAP



GENERAL NOTES:

- Contractor will be required to provide notice to utility companies a minimum of seventy-two (72) hours prior to any excavation, as follows:
Kansas One-Call
687-2470
The Contractor must notify the following in case of an emergency:
Cox Communications 282-4270
Kansas Gas Service 1-888-462-4950
Waste Energy 363-6690
Aging Energy 1-800-362-0295
City of Wichita Water Dept 268-4563
City of Wichita Storm Sewer Maint. 268-4090
City of Wichita Traffic Maint. 268-4034
Cimaco Phillips Pipeline Co. 1-877-267-2290
Southern Star Pipeline Co. 529-6600
Kinder-Morgan Pipeline Co. 1-888-844-5658
- Utility service lines, poles, valve boxes, meters, and etcetera are to be adjusted as necessary by others prior to construction on the site. The Contractor shall be responsible for the location of all utilities and shall be required to adjust them as necessary. The Contractor shall be required to identify a utility to be adjusted by its owner during construction. Existing utilities and their location as shown on the plans, represent the best information obtainable for design. The Contractor will be required to work around existing utilities within the right-of-way which do not conflict with proposed construction.
- Rubble from the removal of miscellaneous structures and excess excavation which is to be wasted shall be disposed of on sites to be provided by the Contractor. These sites shall be approved by the Engineer, as to suitability, appearance and site location. Locations, in the opinion of the Engineer, that will leave an unsightly appearance will not be approved. All disposal sites must be approved by the Kansas Department of Health and Environment. Material either stockpiled or disposed of in a flood plain would require a Kansas State Board of Agriculture permit. Any material dumped in waters of the United States or wetlands is subject to U.S. Corps of Engineers permitting regulations. Any material buried or stockpiled on the site shall be clearly marked with a surveyor's flag and a previously approved borrow location.
- Trees and shrubs in public right-of-way which are in direct conflict with proposed new construction shall be removed by the Contractor with the Engineer's approval. Trees and shrubs which are not in direct conflict with proposed new construction shall be saved and protected from damage.
- The Contractor shall give all property owners and/or tenants of developed property adjoining the construction of this project a minimum of ten (10) days notice prior to start of construction.
- All existing and proposed erosion control measures including silt fencing, erosion control mat, straw bales, meter barriers, and cost entrance shall be maintained throughout construction by the Contractor and until the project is complete. The Contractor shall submit weekly reports on the status of erosion control measures. The contractor shall be required to comply with maintenance and/or replacement of erosion control measures as determined by the on-site engineer until project is accepted by CITY of Wichita. Maintenance and/or replacement of erosion control measures to be paid by U.S. bid item "Maintain Existing BMPs".
- The Contractor shall adjust water valve boxes and fire hydrants as directed by the Engineer at the price bid for solid adjustments. The Water Department shall locate water valves one time during construction when requested by Contractor. It shall be the Contractor's responsibility to preserve such field locations during the construction process. Water valves, water valve boxes or fire hydrants damaged during construction shall be repaired by the Contractor at his own expense.
- All areas disturbed during construction shall be All areas disturbed during construction shall be as follows (Temporary Seeding):
Seed: Ryegrass 5 lbs./1000 sq. Ft.
All costs associated with seeding shall be included in bid item "Seeding". All seeding operations shall conform to City of Wichita Standard Specifications.
- All water mains and appurtenances shall be installed in per City of Wichita Standard Specifications and Special Provisions.
- All excess excavation shall remain on-site and shall be stockpiled or spread at a location determined by the engineer.
- Opening and closing of water valves shall be done slowly to prevent damage to the water distribution system from water hammer. All valves closed by the contractor must be reopened as new construction permits. Project inspector must ascertain that any valve closed by the Contractor is reopened. Contractor will be permitted to operate water valves only when the project inspector assigned to the project is present.
- The Developer of this project is Joy Russell
P.O. Box 75337, Wichita, KS 67272
(316) 722-2417 joy.russell@jrussecco.com



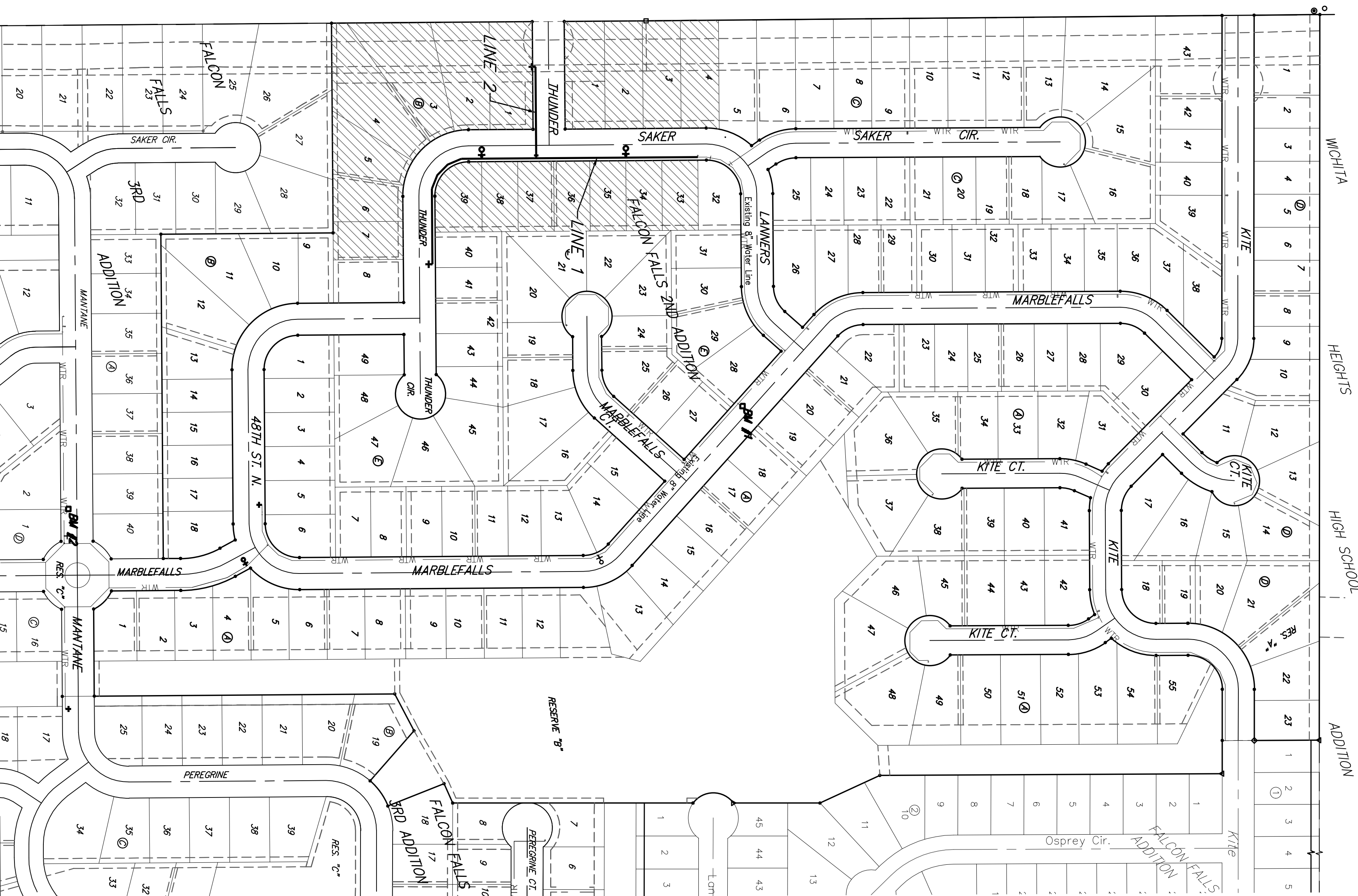
BENCHMARKS

BM #1: "□" Top of Curb NE of the most easterly corner of Lot 28, Block E, Falcon Falls 2nd Addition
Elev. = 1361.23 (NGVD29)

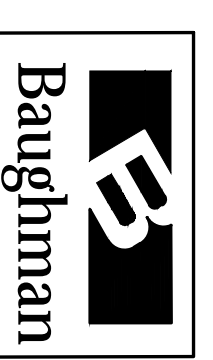
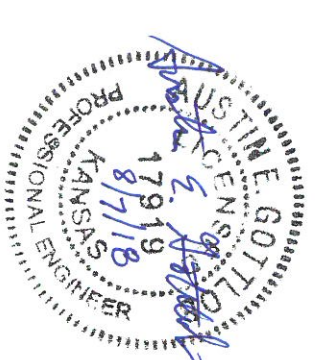
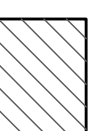
BM #2: "□" Top of Curb North of the NE corner of Lot 2, Block D, Falcon Falls 3rd Addition
Elev. = 1351.76 (NGVD29)

SHEET INDEX

Tile Sheet	1
Standard Water Detail	2
Miscellaneous Water Detail	3
Line 1	4
Line 2	5
Erosion Control Plan	6
Erosion Control BMP Details	7-11
Coordinate Sheet	12
Copy of Plot	13-14



BENEFIT DISTRICT



Baughman Company, P.A. 316 Ellis St. Wichita, KS 67211 P 316-262-7271 F 316-262-0148
ENGINEERING | SURVEYING | PLANNING | LANDSCAPE ARCHITECTURE
C:\Projects\Falcon Falls 2nd Phase 4A\WTR 18-05-8011\WTR PLANS.dwg