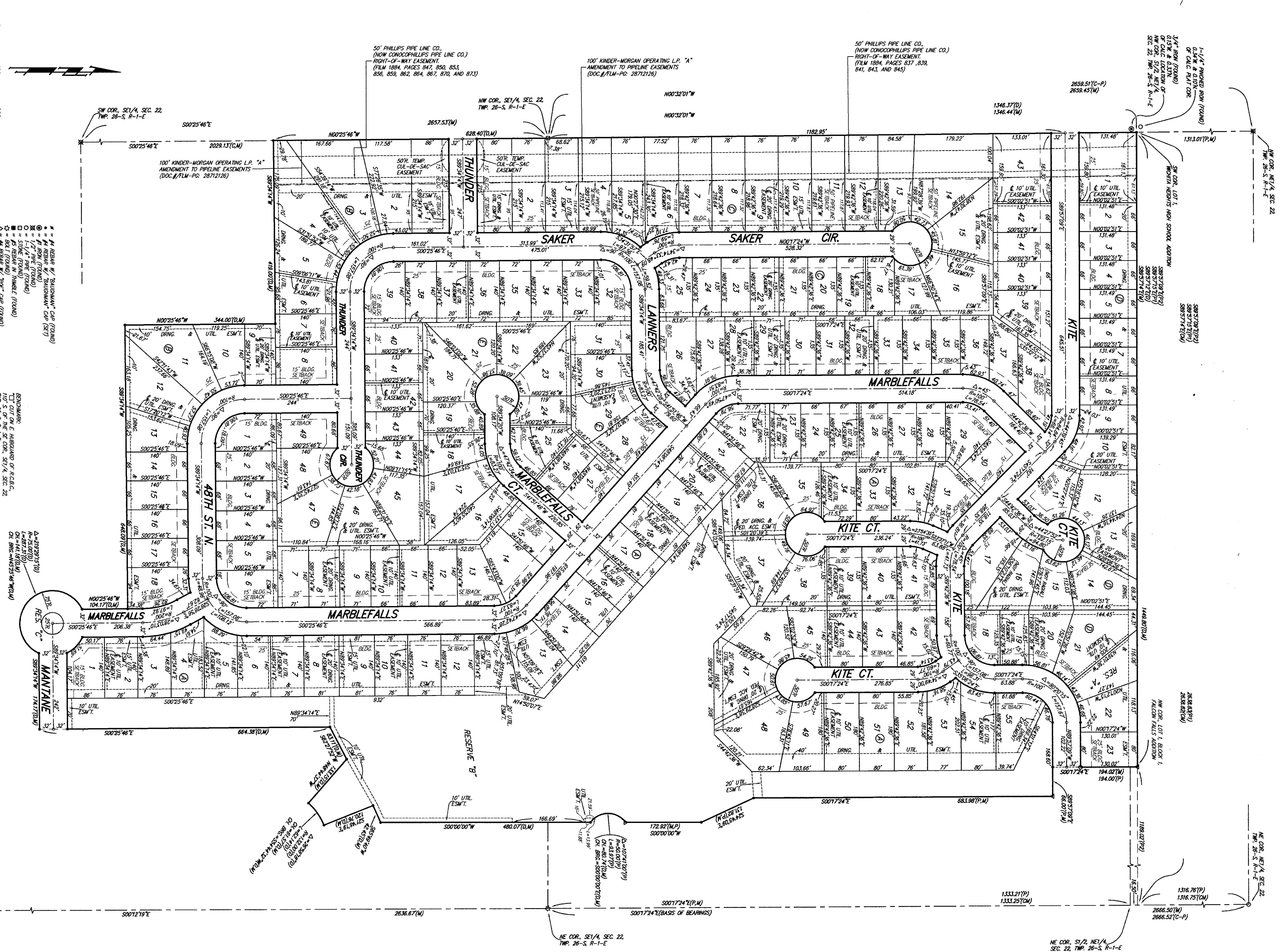


# FALCON FALLS 2ND ADDITION WICHITA, SEDGWICK COUNTY, KANSAS



**NOTE:**  
 ALL LOTS WITHIN FALCON FALLS 2ND ADDITION SHALL HAVE A 3 FOOT INTERIOR SETBACK.  
 A master grading plan for drainage has been developed for this subdivision and is on file with the City of Wichita, Kansas. All drainage easements, easements, and easement lines are shown on this plat. The City Engineer of the City of Wichita, Kansas, has approved this plat. No obstructions which impede the flow of this drainage system shall be allowed.

- (M) = MEASURED
- (P) = PLATTED
- (C) = CALCULATED
- (-P) = CALCULATED PER MEASURED INFO
- (-C) = CALCULATED PER MEASURED PER
- (M) = MEASURED
- (P) = PLATTED
- (C) = CALCULATED
- (-P) = CALCULATED PER MEASURED INFO
- (-C) = CALCULATED PER MEASURED PER

LOT	BLOCK	ELEVATION
1-9	A	1353.0
10-12	A	1354.0
13-18, 20, 27	A	1355.0
46-50	A	1355.0
51-55	A	1357.0
21, 22	D	1359.5

**MINIMUM BUILDING FOOT ELEVATIONS FOR LOWEST CHIMNEY TO THE STRUCTURES**

BENCHMARK:  
 T.C. COR. ON E. HARBORLAND OF R.C.C.C.,  
 TWP. 26-S, R-1-E, SEC. 22,  
 ELEV. = 1399.54 (NOV029)

SE COR. SE 1/4 SEC. 22  
 TWP. 26-S, R-1-E