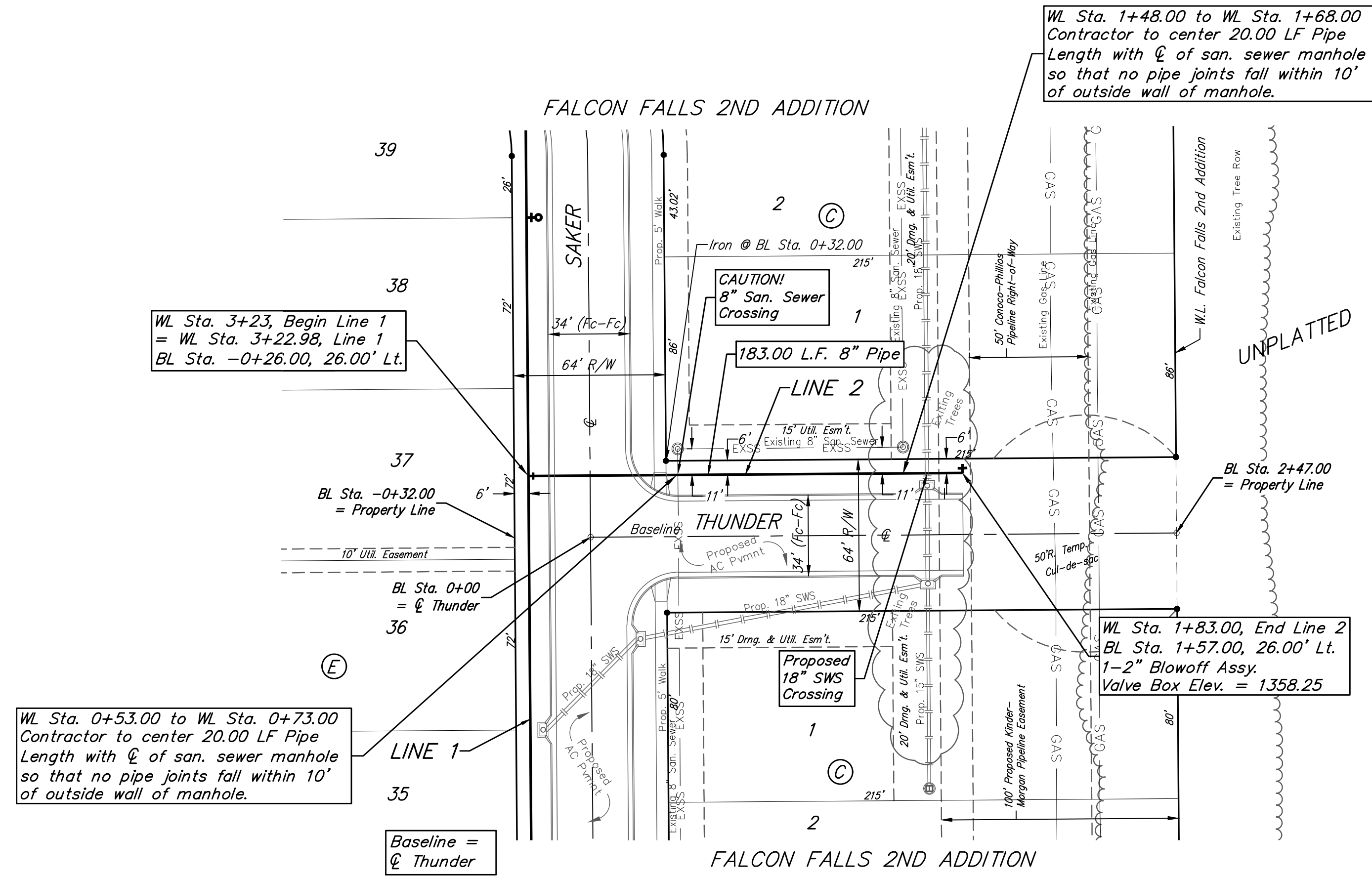


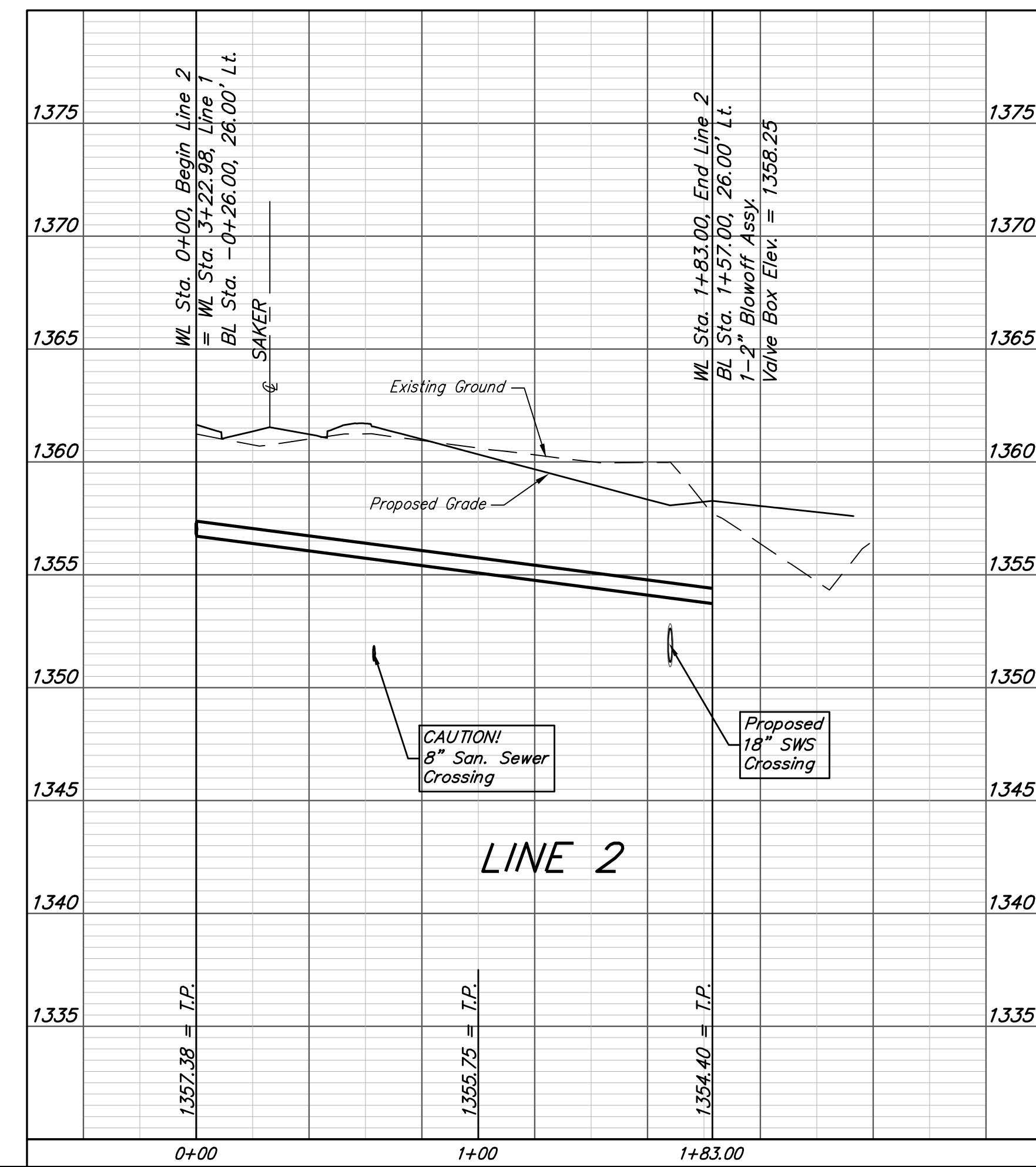
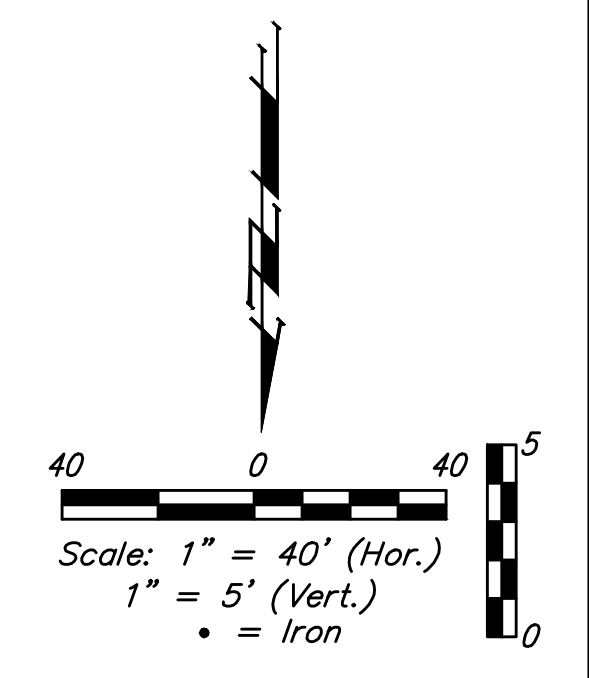
BENCHMARKS:

BM #1: "□" Top of Curb NE of the most easterly corner of Lot 2B, Block E, Falcon Falls 2nd Addition
Elev. = 1361.23 (NGVD29)

BM #2: "□" Top of Curb North of the NE corner of Lot 2, Block D, Falcon Falls 3rd Addition
Elev. = 1351.76 (NGVD29)



Remove existing trees only as **ABSOLUTELY** necessary for construction. Trees not in direct conflict with proposed new construction shall remain and be protected from damage. Cost to be included in bid item "Site Clearing"



| | | | |
|---|----------------|--------------------------------------|-------------------------|
| Baughman | | Falcon Falls 2nd Addition - Phase 4A | |
| LINE 2 | | Water Distribution System | |
| Baughman Company, P.A. 315 Ellis St. Wichita, KS 67211 P 316-262-7271 F 316-262-0149 ENGINEERING SURVEYING PLANNING LANDSCAPE ARCHITECTURE | | | |
| PROJECT NUMBER 448-90109 | DESIGN AEG | DRAWN JAK | DATE 8/07/18 |
| REVISIONS: | SCALE Noted | | |
| | | | SHEET 5 OF 14 |

