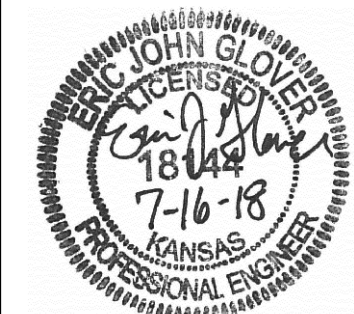




© 2018 GARVER, LLC
 THIS DOCUMENT, ALONG WITH THE IDEAS AND DESIGNS CONVEYED HEREIN, SHALL BE CONSIDERED INSTRUMENTS OF PROFESSIONAL SERVICE AND ARE PROPERTY OF GARVER, LLC. ANY USE, REPRODUCTION, OR DISTRIBUTION OF THIS DOCUMENT, ALONG WITH THE IDEAS AND DESIGN CONTAINED HEREIN, IS PROHIBITED UNLESS AUTHORIZED IN WRITING BY GARVER, LLC OR EXPLICITLY ALLOWED IN THE GOVERNING PROFESSIONAL SERVICES AGREEMENT FOR THIS WORK.



REV.	DATE	DESCRIPTION	BY



City of Wichita, KS

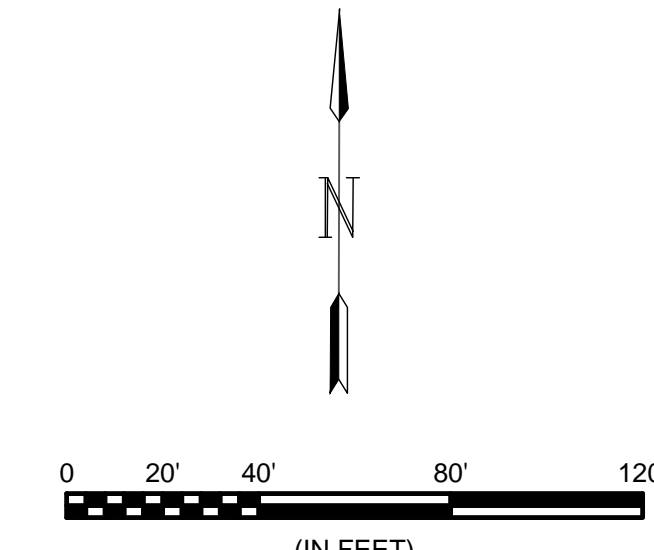
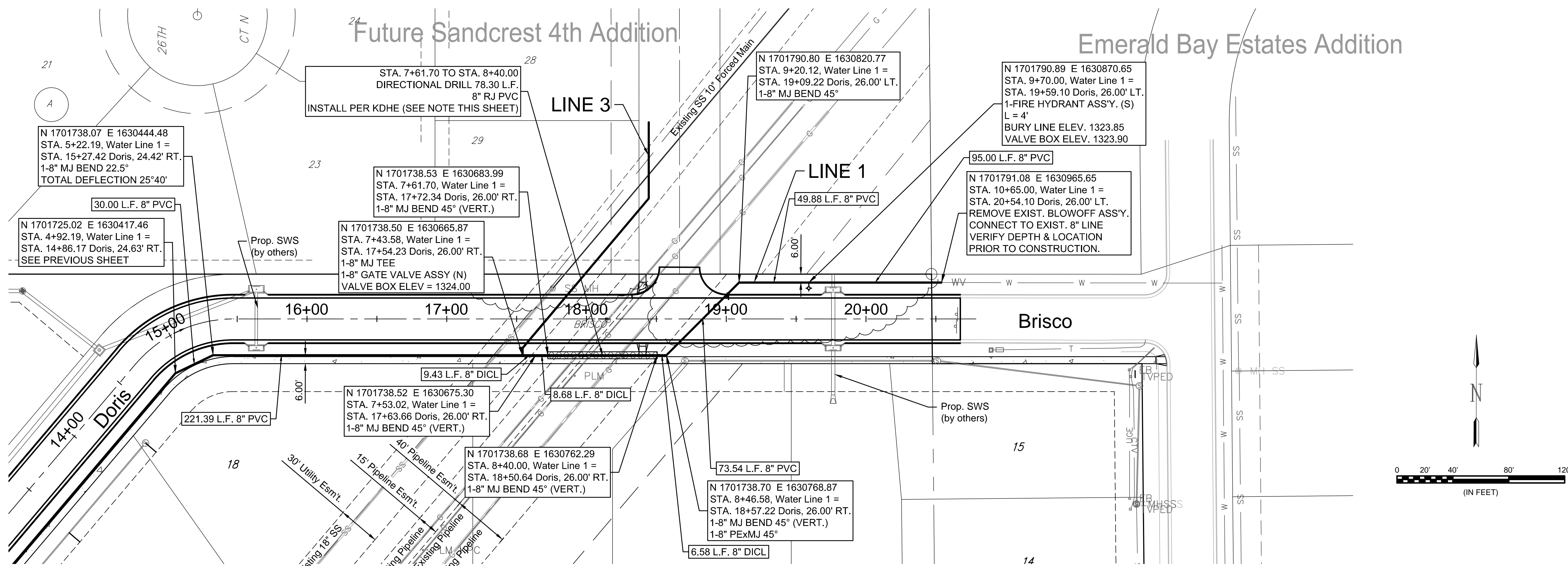
Emerald Bay 3rd Water Plans

Water Line 1 (2 of 2)

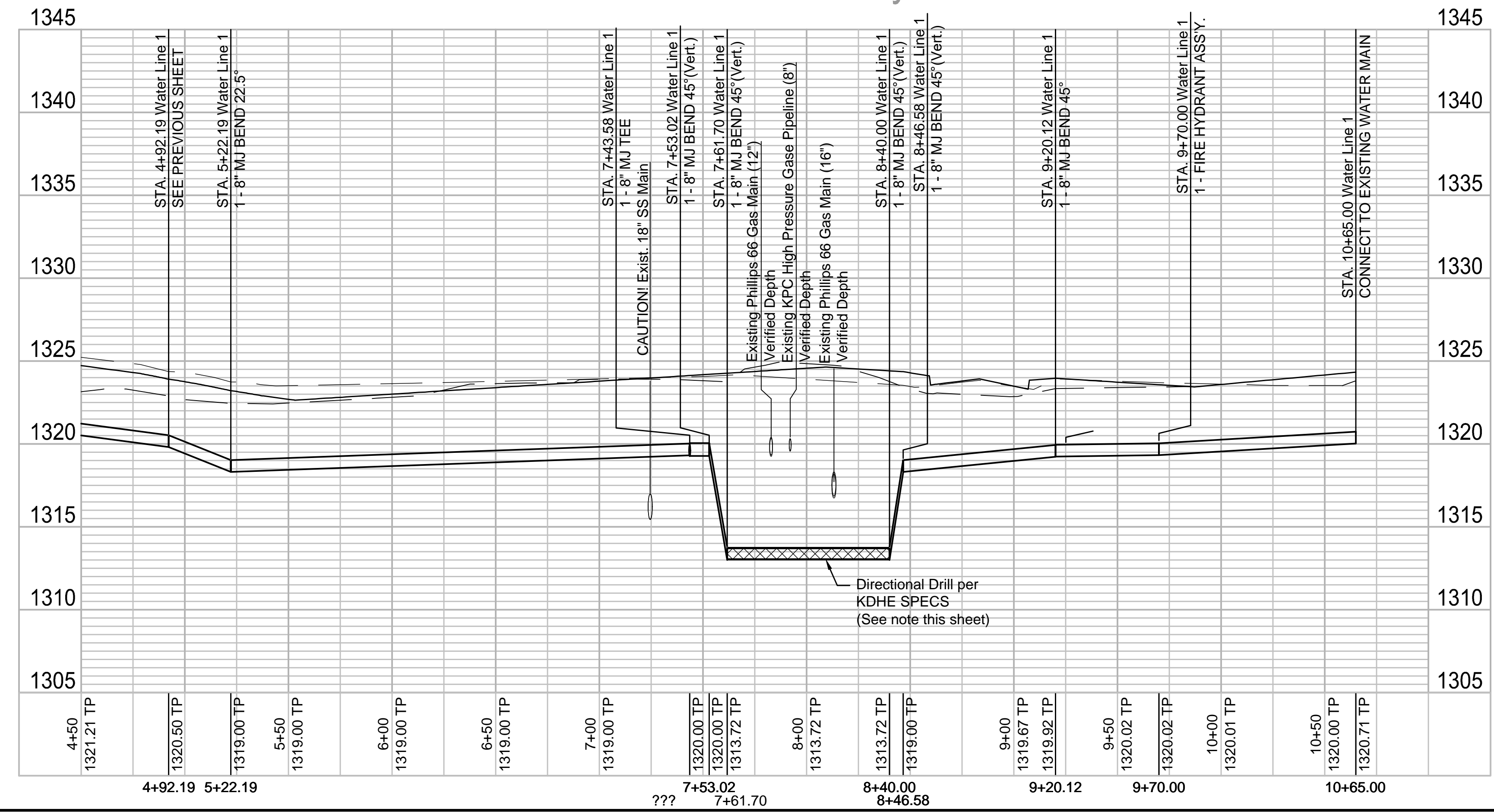
JOB NO.: 17264883
 DATE: JULY 2018
 DESIGNED BY: .
 DRAWN BY: .

BAR IS ONE INCH ON ORIGINAL DRAWING
 IF NOT ONE INCH ON THIS SHEET, ADJUST SCALES ACCORDINGLY.
 DRAWING NUMBER

SHEET NUMBER **5** OF **16**



Emerald Bay Estates 3rd Addition



MECHANICAL ENCASEMENT - Where a water line must be sleeved within a pipe in order to protect the water line, such as a road, railroad, or pipe way crossings, the water line must be sleeved with seamless, jointless pipe of equal or greater mechanical strength for distance of at least 10 ft. (3.0m) beyond the crossing in both directions, kept separate from the sleeve pipe with plastic spacers or wooden skids, and the annular spaces formed at the ends of the carrier/sleeve pipes must be made watertight with flexible boot type end seals.

File: L:\2017\17264883 - Emerald Bay 3rd Improvements\Drawings\C3D\Water\Water Line 1 2.dwg, Last Save: 7/5/2018 9:13 AM, Last saved by: DRStandrich
 Last plotted by: Standrich, Darryl R., Plot Style: ---, Plot Scale: 1:2,5849, Plot Date: 7/16/2018 9:39 AM, Plotter Used: None