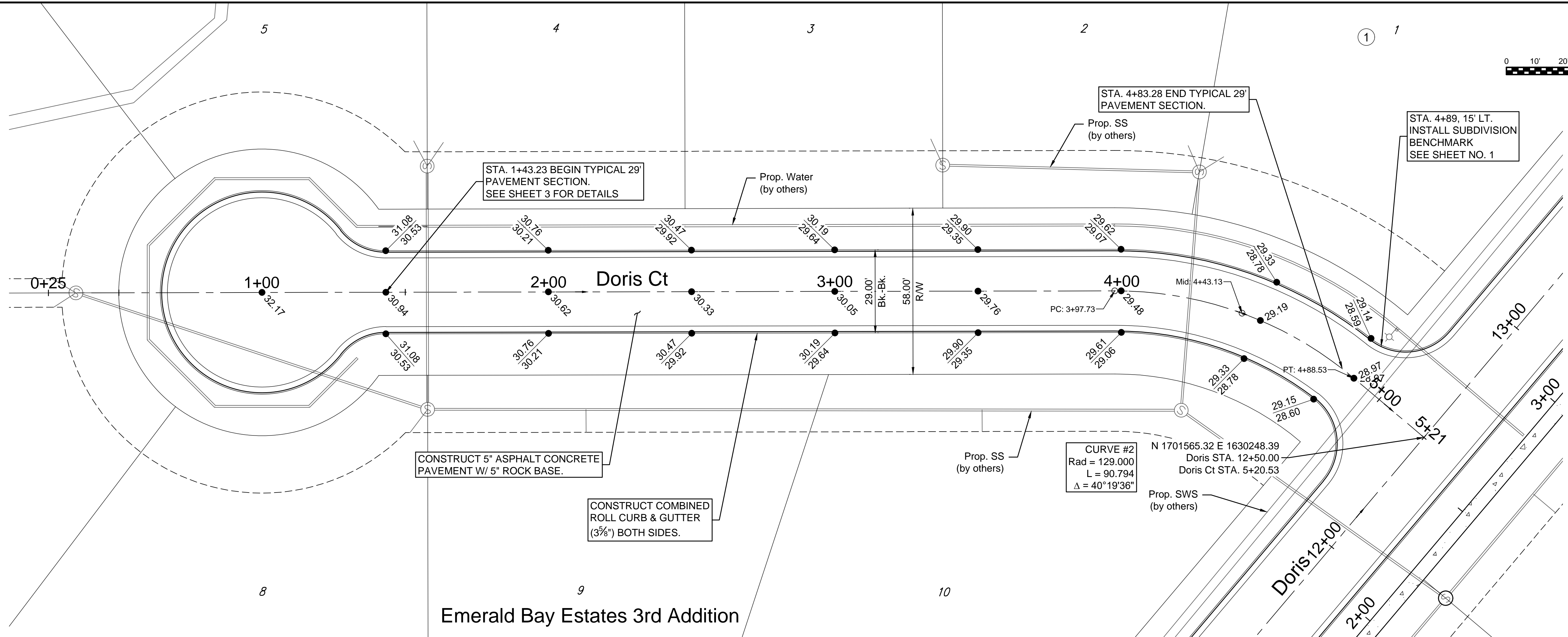
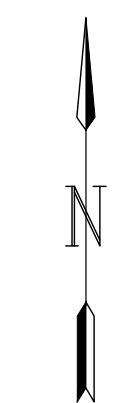
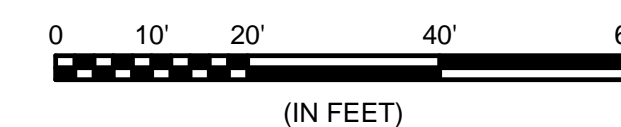
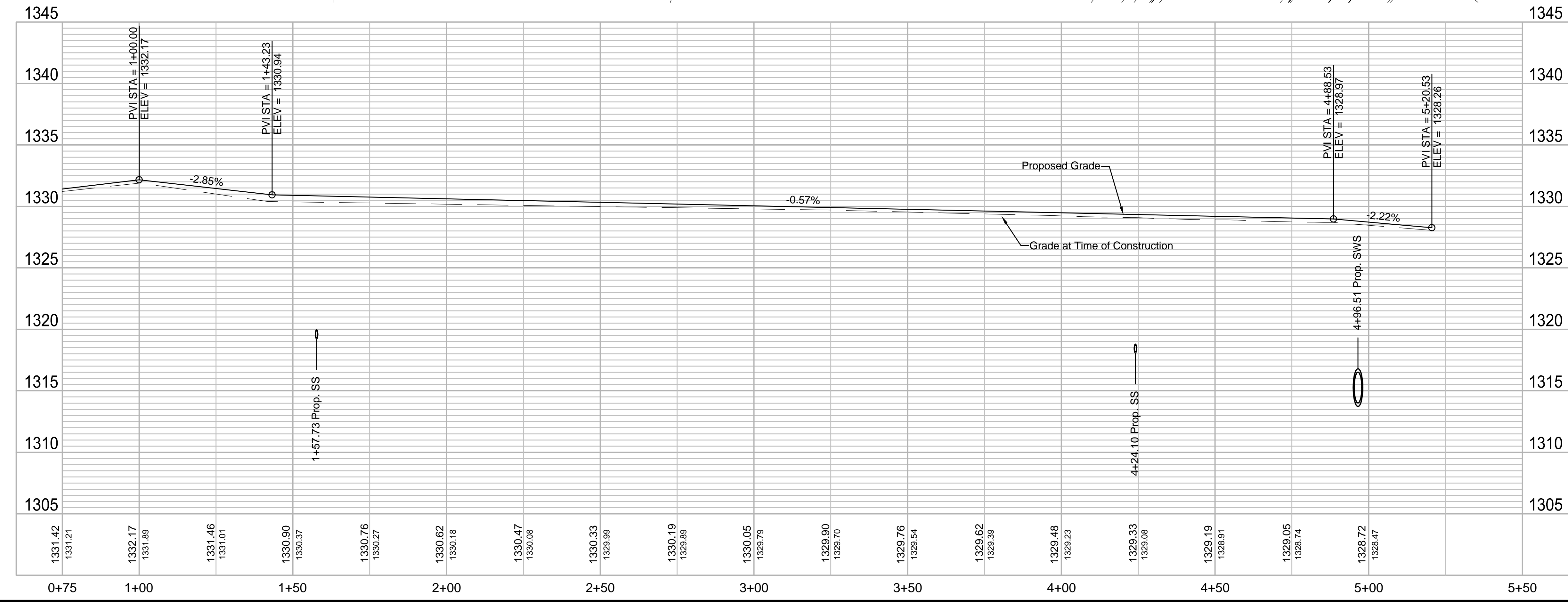




© 2018 GARVER, LLC
 THIS DOCUMENT, ALONG WITH THE IDEAS AND DESIGNS CONVEYED HEREIN, SHALL BE CONSIDERED INSTRUMENTS OF PROFESSIONAL SERVICE AND ARE PROPERTY OF GARVER, LLC. ANY USE, REPRODUCTION, OR DISTRIBUTION OF THIS DOCUMENT, ALONG WITH THE IDEAS AND DESIGN CONTAINED HEREIN, IS PROHIBITED UNLESS AUTHORIZED IN WRITING BY GARVER, LLC OR EXPLICITLY ALLOWED IN THE GOVERNING PROFESSIONAL SERVICES AGREEMENT FOR THIS WORK.



Emerald Bay Estates 3rd Addition



File: L:\2017\17264883 - Emerald Bay 3rd Improvements\Drawings\C3D\Paving\Doris_Ct.dwg Last Save: 7/10/2018 3:52 PM Last saved by: DRS\standrich
 Last plotted by: Standrich, Dairy R Plot Style: --- Plot Scale: 1:2.5849 Plot Date: 7/10/2018 4:36 PM Plotter used: None

REV.	DATE	DESCRIPTION	BY

City of Wichita, KS
 Project #: 472-85408
 OCA: 766397
 Emerald Bay 3rd
 Paving Plans

Doris Ct

JOB NO.: 17264883
 DATE: May 2018
 DESIGNED BY: EJJ
 DRAWN BY: DRS

BAR IS ONE INCH ON ORIGINAL DRAWING
 IF NOT ONE INCH ON THIS SHEET, ADJUST SCALES ACCORDINGLY.

DRAWING NUMBER

SHEET NUMBER **11** OF **21**