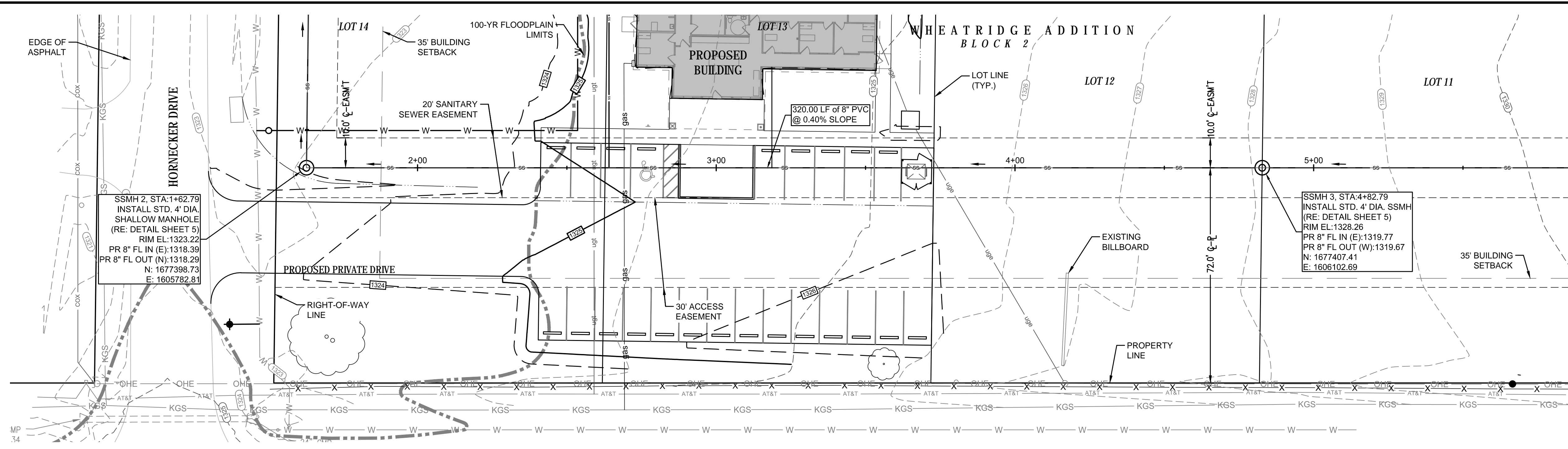
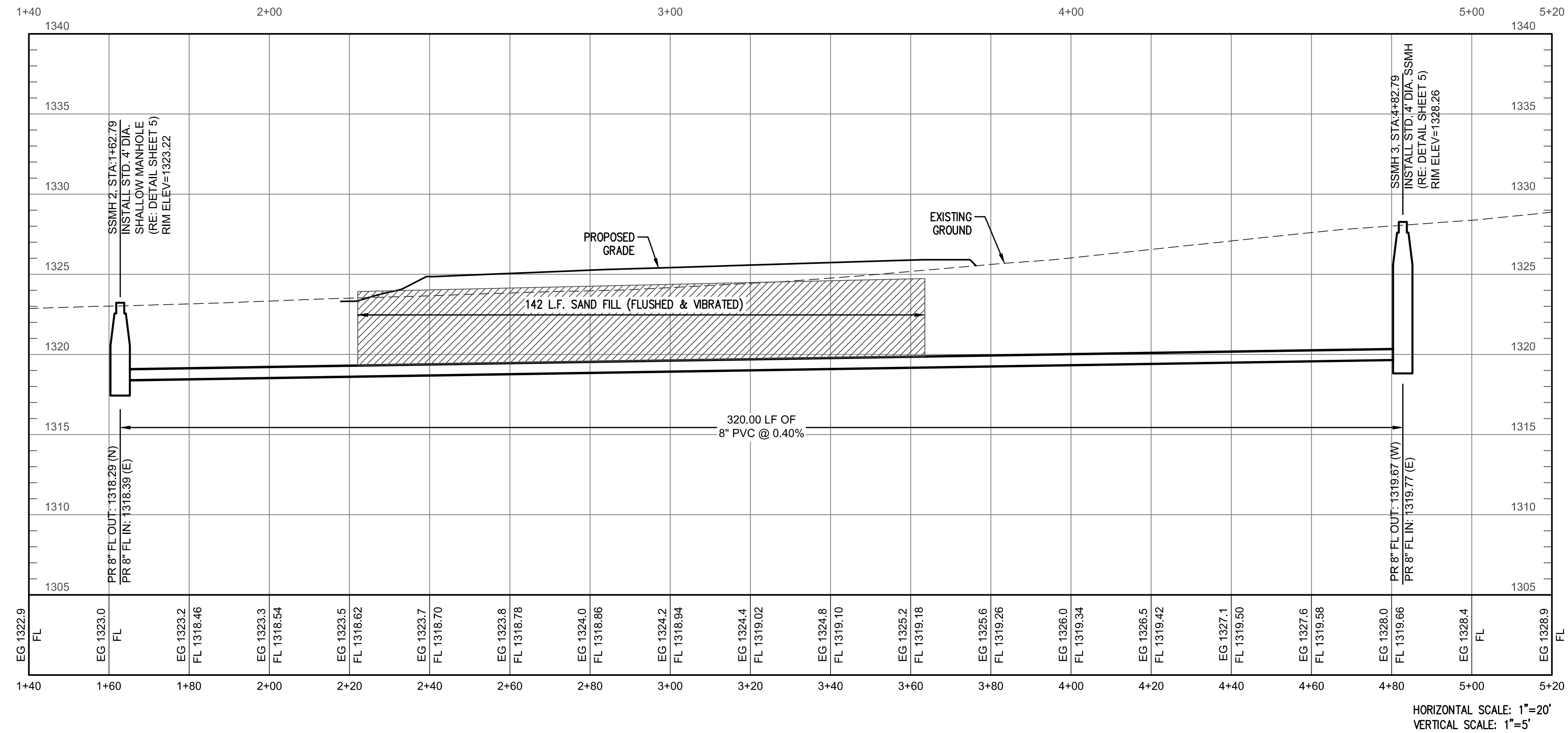


FILE LOCATION: S:\Drawing Files\Land Projects\1-14-00\Profile\1-14-00\Profile.dwg - Animal Hospital\DWG\Sanitary.dwg TAB NAME: Plan & Profile 2 USER: ranganem SWED: 12/21/2017 10:35 AM PLOTTED: 12/21/2017 10:37 AM



SS Line No. 1 PROFILE



BUILT PER PLAN

REV.	DESCRIPTION	DATE

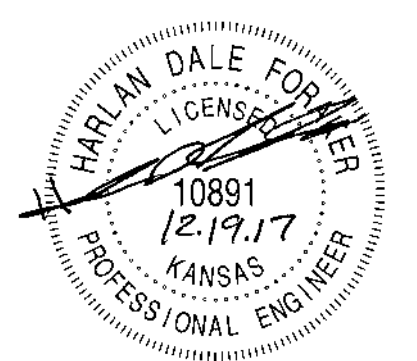
PRAIRIE RIDGE ANIMAL HOSPITAL
SANITARY IMPROVEMENTS

WHEATRIDGE ADDITION
WICHITA, SEDGWICK COUNTY, KS

CERTIFIED ENGINEERING DESIGN, P.A.
CIVIL ENGINEERING SERVICES



1935 WEST MAPLE STREET
WICHITA, KANSAS 67213
PH. (316) 262-8808 FAX. (316) 262-1669



SURVEY DISCLAIMER:
TOPOGRAPHIC SURVEY USED IN PREPARING PLANS WAS DEVELOPED SOLELY FOR ENGINEERING PLANS. THE INFORMATION PROVIDED IS NOT A BOUNDARY SURVEY. ALL PROPERTY AND RIGHT OF WAY LINES ARE APPROXIMATE.

UTILITIES SHOWN REPRESENT THE BEST INFORMATION AVAILABLE FOR DESIGN. ADDITIONAL UTILITIES MAY BE PRESENT ON THIS PROJECT. THE CONTRACTOR SHALL BE RESPONSIBLE FOR DETERMINING THE EXACT LOCATION, DEPTH AND SIZE OF ALL UNDERGROUND UTILITIES PRIOR TO CONSTRUCTION. THE CONTRACTOR SHALL BE LIABLE FOR ANY DAMAGE CAUSED BY THE FAILURE TO DO SO.



PROJECT NO.: 20172416
ISSUE DATE: 12/19/17
CONTACT: L. MILLS / H. FORAKER
CHECKED BY: L. MILLS / H. FORAKER

SS LINE NO. 1 PLAN & PROFILE