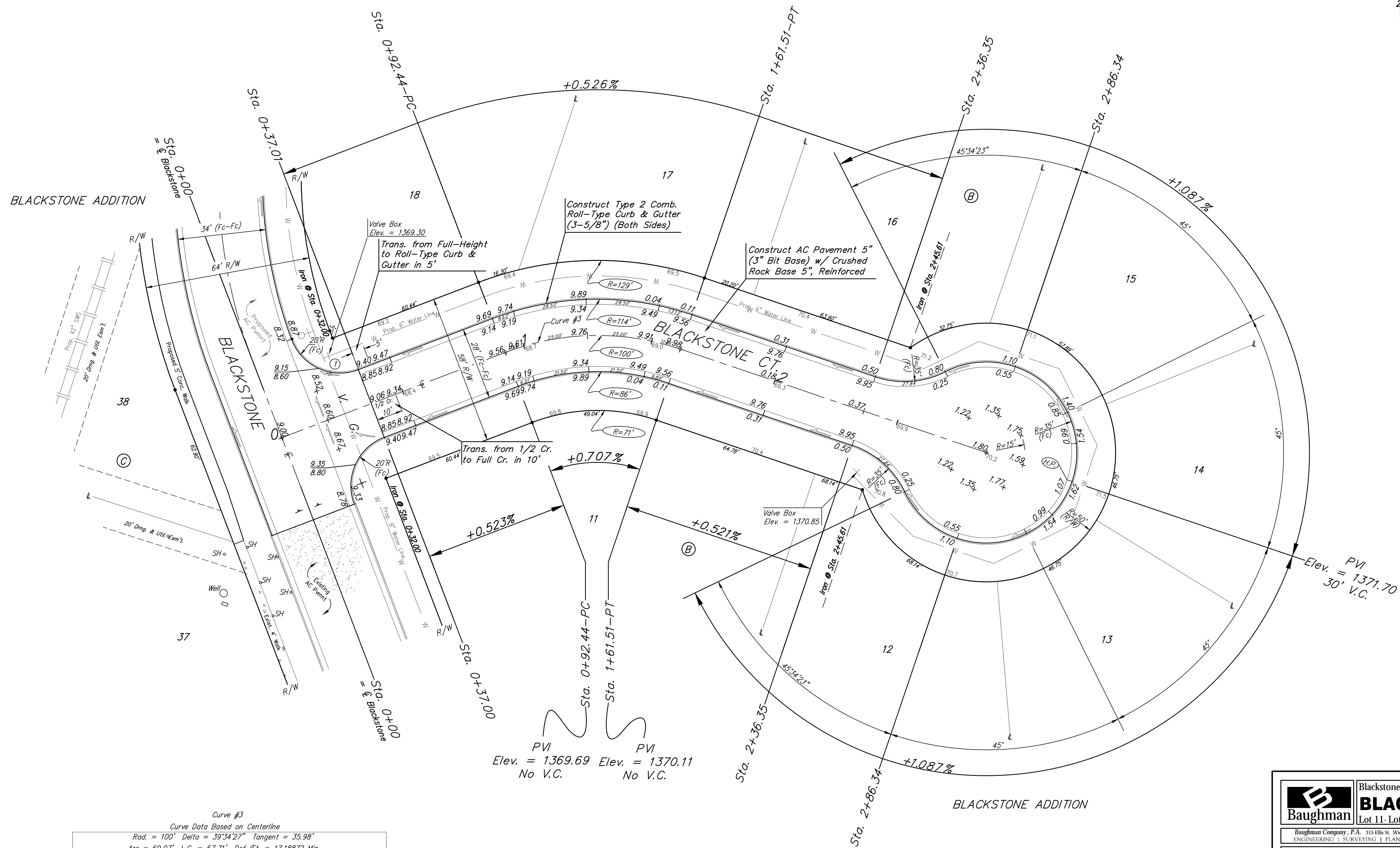
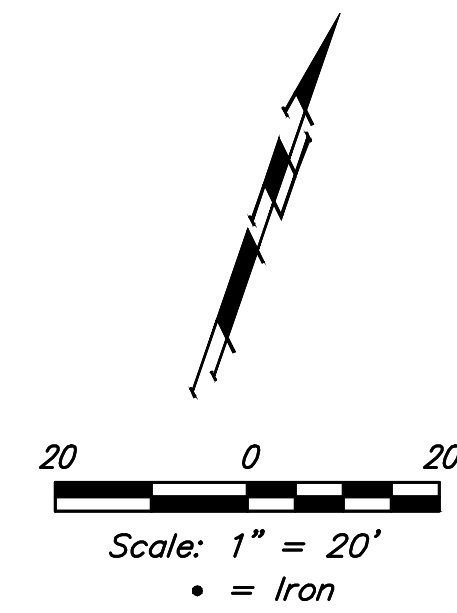


BENCHMARKS:
 BM #1: Railroad spike in HLP
 2' West of center Sec. 11,
 T-27-S, R-2-W
 (S. Face of HLP)
 Elev. = 1367.70 NGVD29

BM #2: "□" Cut in top of
 curb adjacent to the Southwest
 Corner, Lot 11, Block B,
 Blackstone Addition
 Elev. = 1369.85 NGVD29



Curve #3
 Curve Data Based on Centerline

Station	Arc	Face Chord Length		Defl.	Total Defl.
		8' Left	8' Right		
0+92.44	-	-	-	0'00"00"	0'00"00"
1+00.00	7.56'	9.22'	5.90'	2'09"57"	2'09"57"
1+25.00	25.00'	30.42'	19.45'	7'09"43"	9'19"40"
1+50.00	25.00'	30.42'	19.45'	7'09"43"	16'29"23"
1+61.51	11.51'	14.03'	8.97'	3'17"50"	19'47"13"

Roll type curb & gutter to be constructed on the pavement on this sheet. Top of curb elevation are given for full height curb.

	Blackstone Addition - Phase III	
	BLACKSTONE CT	
Lot 11- Lot 18, Block B		
<small>Baughman Company, P.A. 315 Ellis St. Wichita, KS 67211 P 316-262-7271 F 316-262-0149 ENGINEERING SURVEYING PLANNING LANDSCAPE ARCHITECTURE</small>		
PROJECT NUMBER 472-84399	DESIGN NBW	DRAWN JAK
REVISIONS:	APPROVED	DATE 8/27/18
	SCALE Noted	SHEET 10 OF 41

C:\Projects\Blackstone\Engineering\Phase 3\STR 1803E954\STR PLANS.dwg