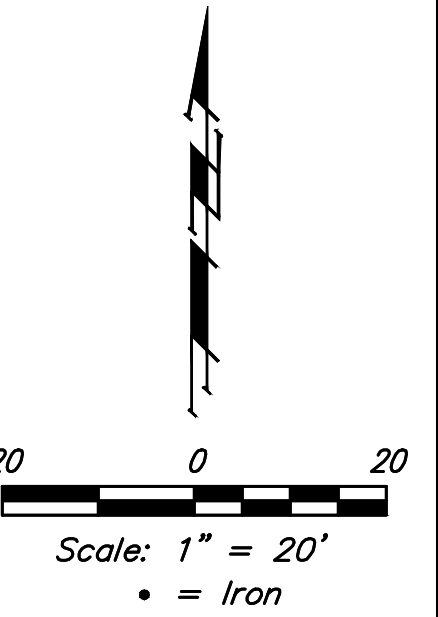
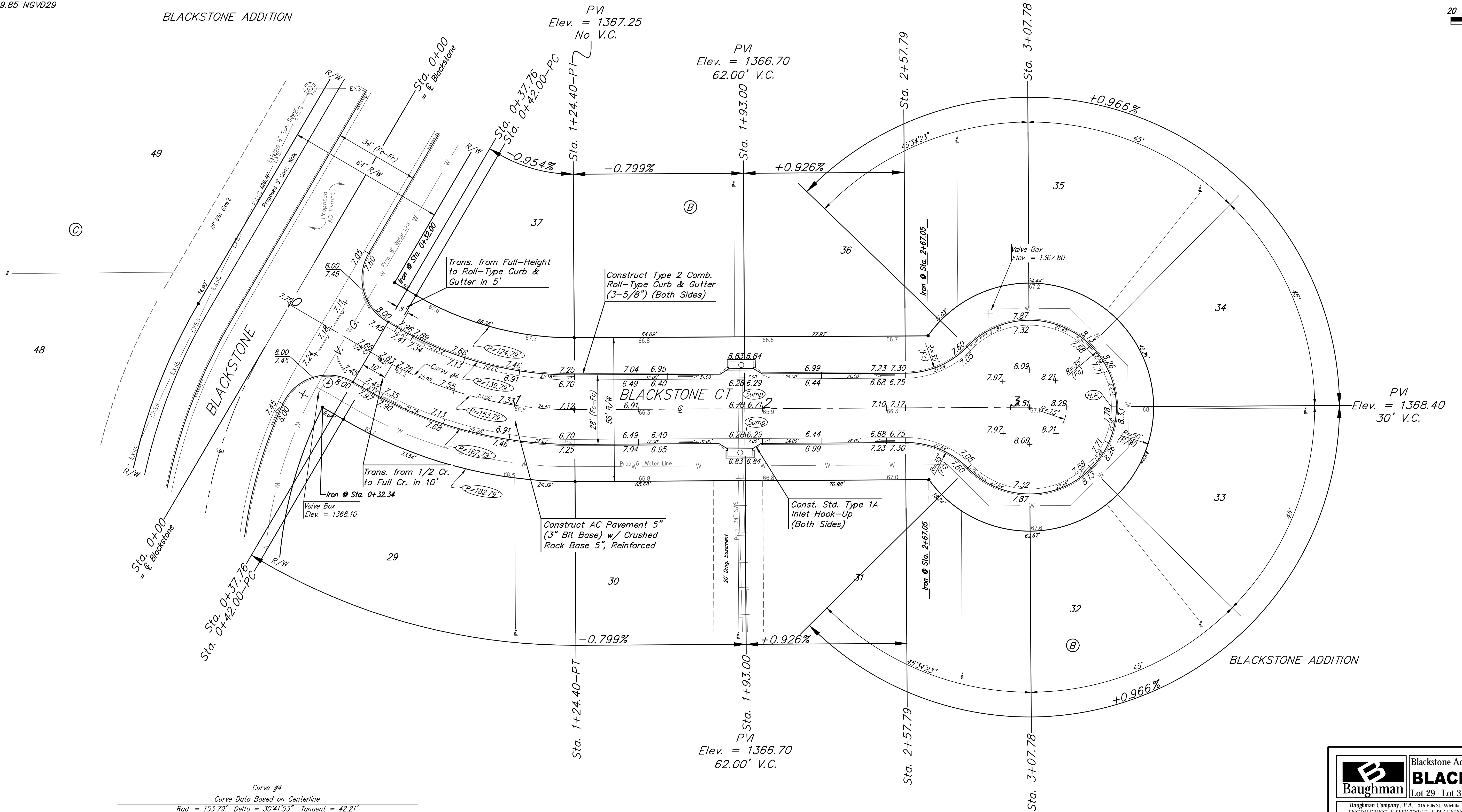


BENCHMARKS:
 BM #1: Railroad spike in HLP
 2' West of center Sec. 11,
 T-27-S, R-2-W
 (S. Face of HLP)
 Elev. = 1367.70 NGVD29

BM #2: "□" Cut in top of
 curb adjacent to the Southwest
 Corner, Lot 11, Block B,
 Blackstone Addition
 Elev. = 1369.85 NGVD29



BLACKSTONE ADDITION



Curve #4

Curve Data Based on Centerline
 Rad. = 153.79' Delta = 30°41'53" Tangent = 42.21'
 Arc = 82.40' L.C. = 81.42' Def./Ft. = 11.17648 Min.

Station	Arc	Face Chord Length		Defl.	Total Defl.
		8' Left	8' Right		
0+42.00	-	-	-	0'00"00"	0'00"00"
0+50.00	8.00'	6.85'	9.14'	1'29"25"	1'29"25"
0+75.00	25.00'	21.40'	28.54'	4'39"24"	6'08"49"
1+00.00	25.00'	21.40'	28.54'	4'39"25"	10'48"14"
1+24.40	24.40'	20.89'	27.86'	4'32"43"	15'20"57"

Subdivision Bench Marks

Street & Station	Location Description	Elevation
Blackstone 2+42.35, 17.25' Rt.	Adjacent to Fire Hydrant at West End of the North Return Blackstone & Blackstone Ct, SW Cor., Lot 18, Blk B	
Blackstone 6+71.65, 17.25' Rt.	Adjacent to Fire Hydrant at West End of the North Return Blackstone & Blackstone Ct, SW Cor., Lot 28, Blk B	
Blackstone 11+31.27, 17.25' Rt.	Adjacent to Fire Hydrant ~50' SW of the NW Cor., Lot 37, Blk B	

Roll type curb & gutter to
 be constructed on the pavement
 on this sheet.
 Top of curb elevation are given
 for full height curb.

Baughman		Blackstone Addition - Phase III	
BLACKSTONE CT		Lot 29 - Lot 37, Block B	
Baughman Company, P.A. 315 Ellis St. Wichita, KS 67211 P 316-262-7271 F 316-262-0149 ENGINEERING SURVEYING PLANNING LANDSCAPE ARCHITECTURE			
PROJECT NUMBER 472-84399	DESIGN NBW	DRAWN JAK	DATE 8/27/18
REVISIONS:	SCALE Noted		
			SHEET 13 OF 41