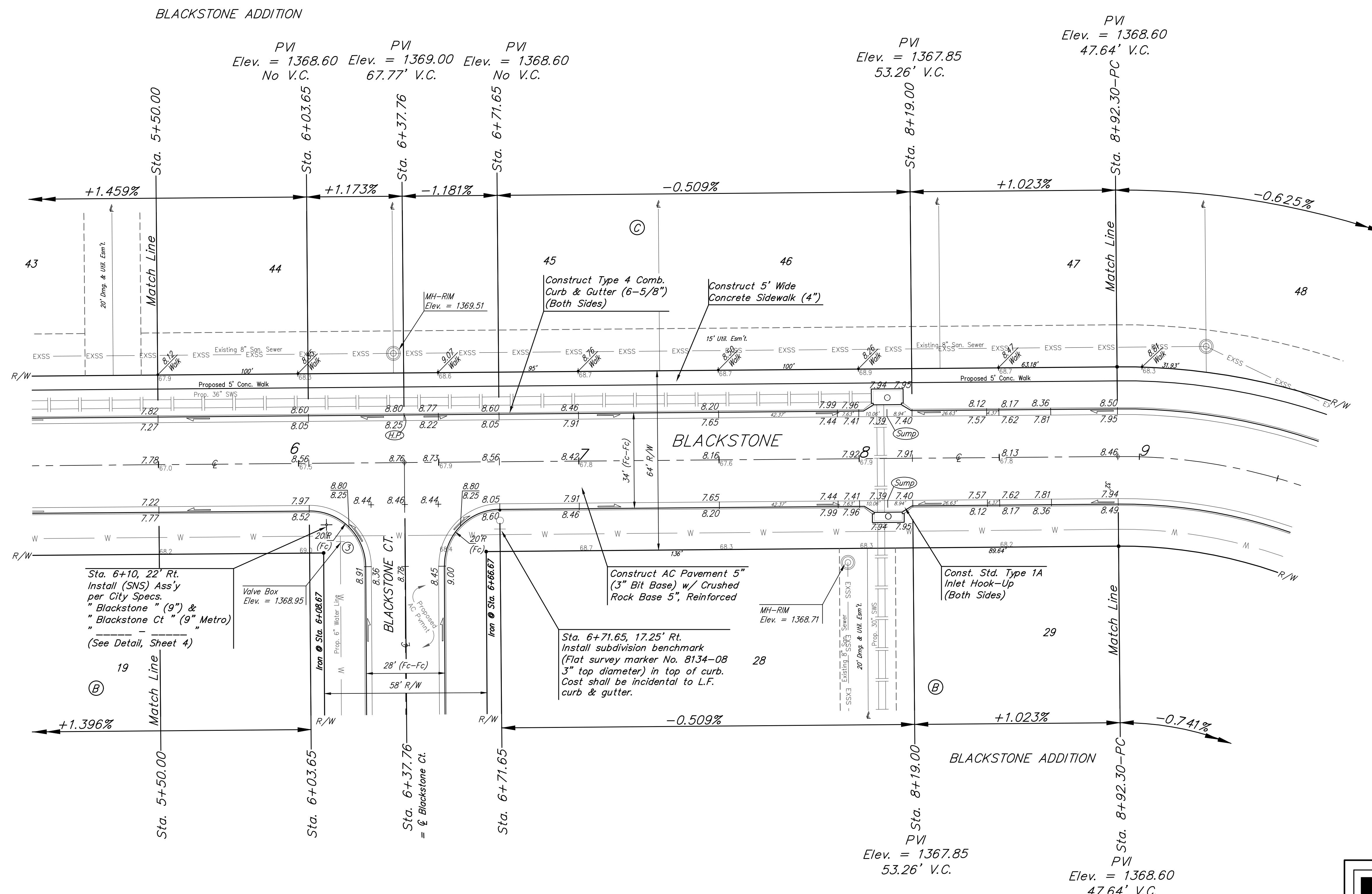
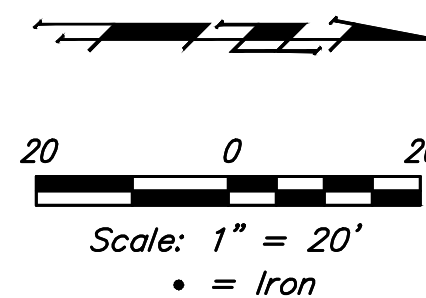


**BENCHMARKS:**  
 BM #1: Railroad spike in HLP  
 2' West of center Sec. 11,  
 T-27-S, R-2-W  
 (S. Face of HLP)  
 Elev. = 1367.70 NGVD29

BM #2: "□" Cut in top of  
 curb adjacent to the Southwest  
 Corner, Lot 11, Block B,  
 Blackstone Addition  
 Elev. = 1369.85 NGVD29



Sta. 6+10, 22' Rt.  
 Install (SNS) Ass'y  
 per City Specs.  
 "Blackstone" (9") &  
 "Blackstone Ct" (9" Metro)  
 (See Detail, Sheet 4)

Sta. 6+71.65, 17.25' Rt.  
 Install subdivision benchmark  
 (Flat survey marker No. 8134-08  
 3" top diameter) in top of curb.  
 Cost shall be incidental to L.F.  
 curb & gutter.

		Blackstone Addition - Phase III	
		<b>BLACKSTONE</b>	
Sta. 5+50.00 to Sta. 8+92.30		<small>Baughman Company, P.A. 315 Ellis St. Wichita, KS 67211 P 316-262-7271 F 316-262-0149          ENGINEERING   SURVEYING   PLANNING   LANDSCAPE ARCHITECTURE</small>	
PROJECT NUMBER 472-84399	DESIGN NBW	DRAWN JAK	
REVISIONS:	APPROVED	DATE 8/27/18	
	SCALE Noted	SHEET	
			<b>8 OF 41</b>