




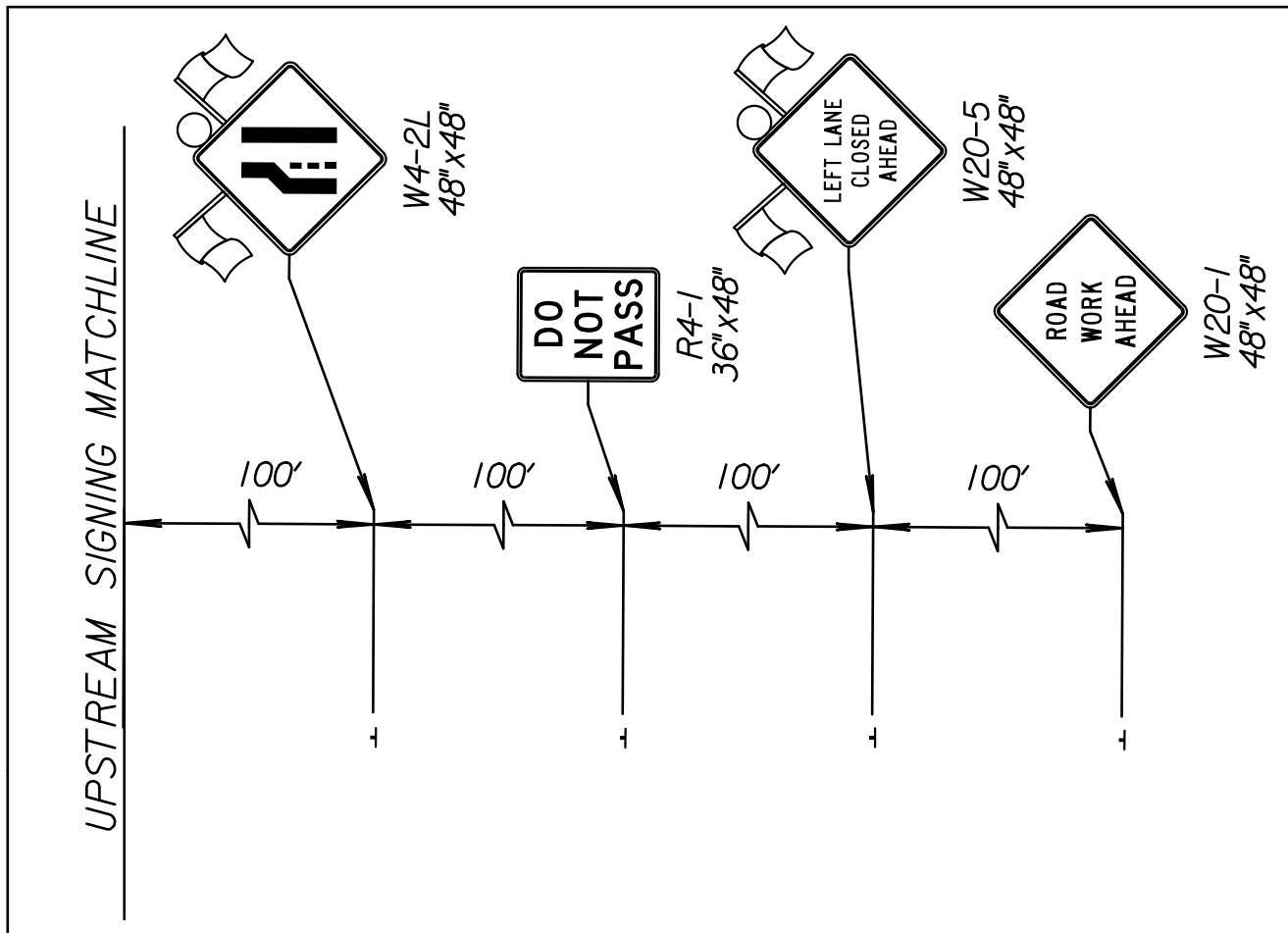
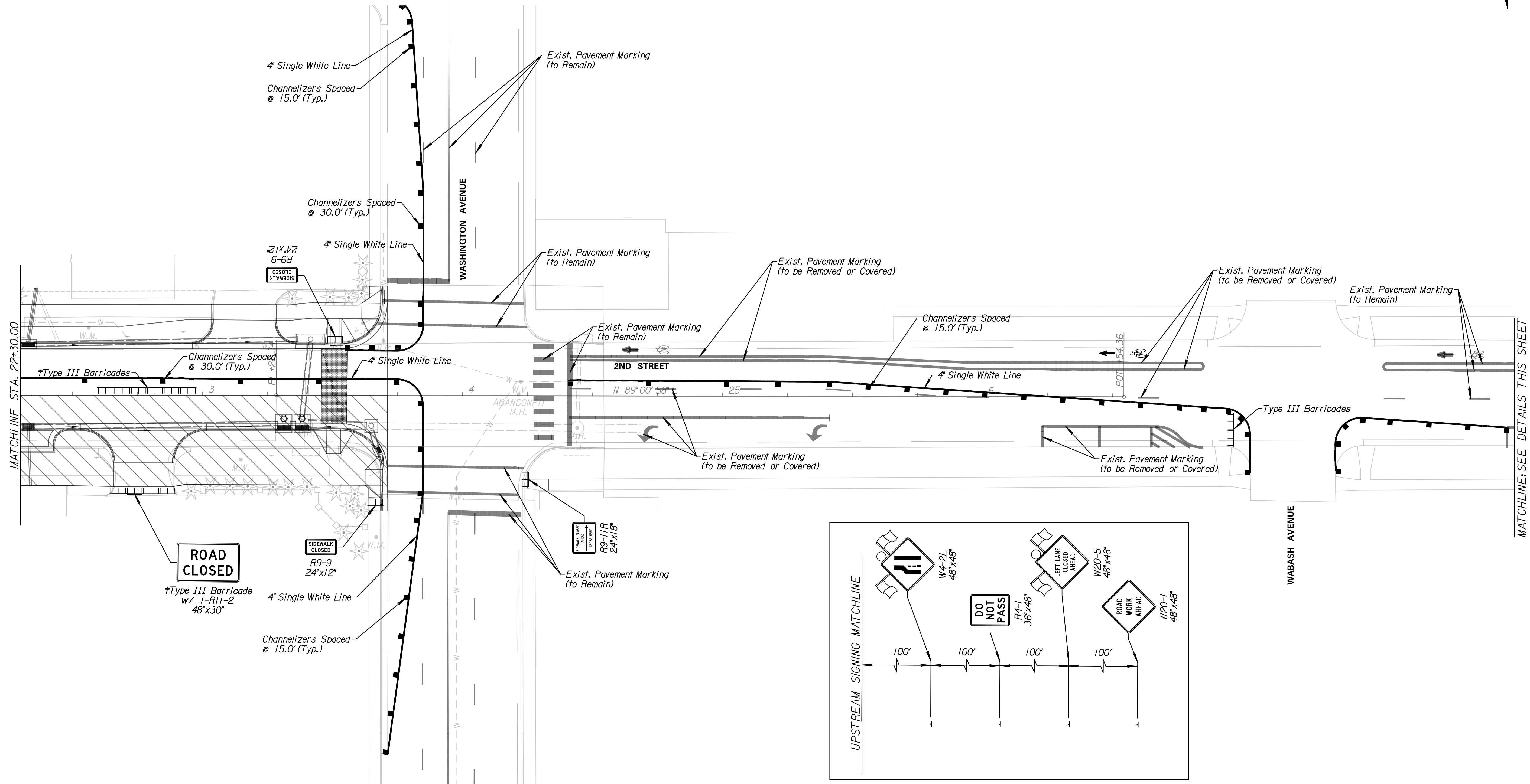
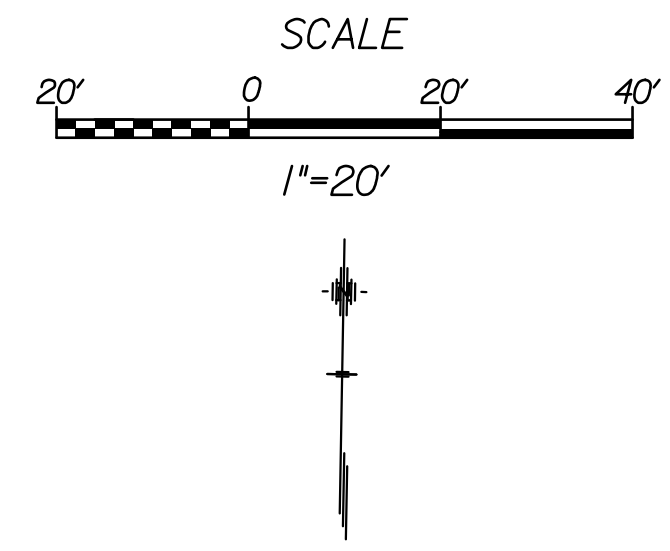


LEGEND

-  Phase I
-  Channelizer
-  Type III Barricade
-  Type III Barricade w/ Sign
-  Single Post/Skid Mounted Sign

Note:  
 †Type III Barricades and signs are to only be placed during construction through private drive or side street.



**ROAD CLOSED**  
 †Type III Barricade w/ I-R11-2 48"x30"

SIDEWALK CLOSED  
 R9-9 24"x12"

R9-1/R 24"x18"

7/11/2018 11:42:27 PM c:\transystems\paw\_ba\transystems\paw\_ba\mmd\0484377C-CPP-M02-103.dgn

**Tran Systems**  
 245 NORTH WACO  
 SUITE 222  
 WICHITA, KANSAS 67202  
 PHONE: 316-303-3000  
 FAX: 316-303-0166

CONSULTANTS:  
  
 LK ARCHITECTURE, INC.  
 345 RIVERVIEW  
 SUITE 200  
 WICHITA, KANSAS 67208  
 PHONE: 316-268-0230

2ND STREET IMPROVEMENTS  
 SANTA FE TO WASHINGTON IN OLD TOWN  
 WICHITA, KANSAS  


REVISIONS:	MARK	DATE	DESCRIPTION

PROJ NO: 472-85284  
 SCALE: 1"=20'  
 DATE: 7/11/2018  
 DESIGNED BY: MCG  
 DRAWN BY: MCG  
 CHECKED BY: TAU

SHEET TITLE:  
**2ND STREET IMPROVEMENTS  
 TRAFFIC CONTROL  
 PHASE 1**

SHEET NO.  
**59**  
 SHEET 59 OF 103