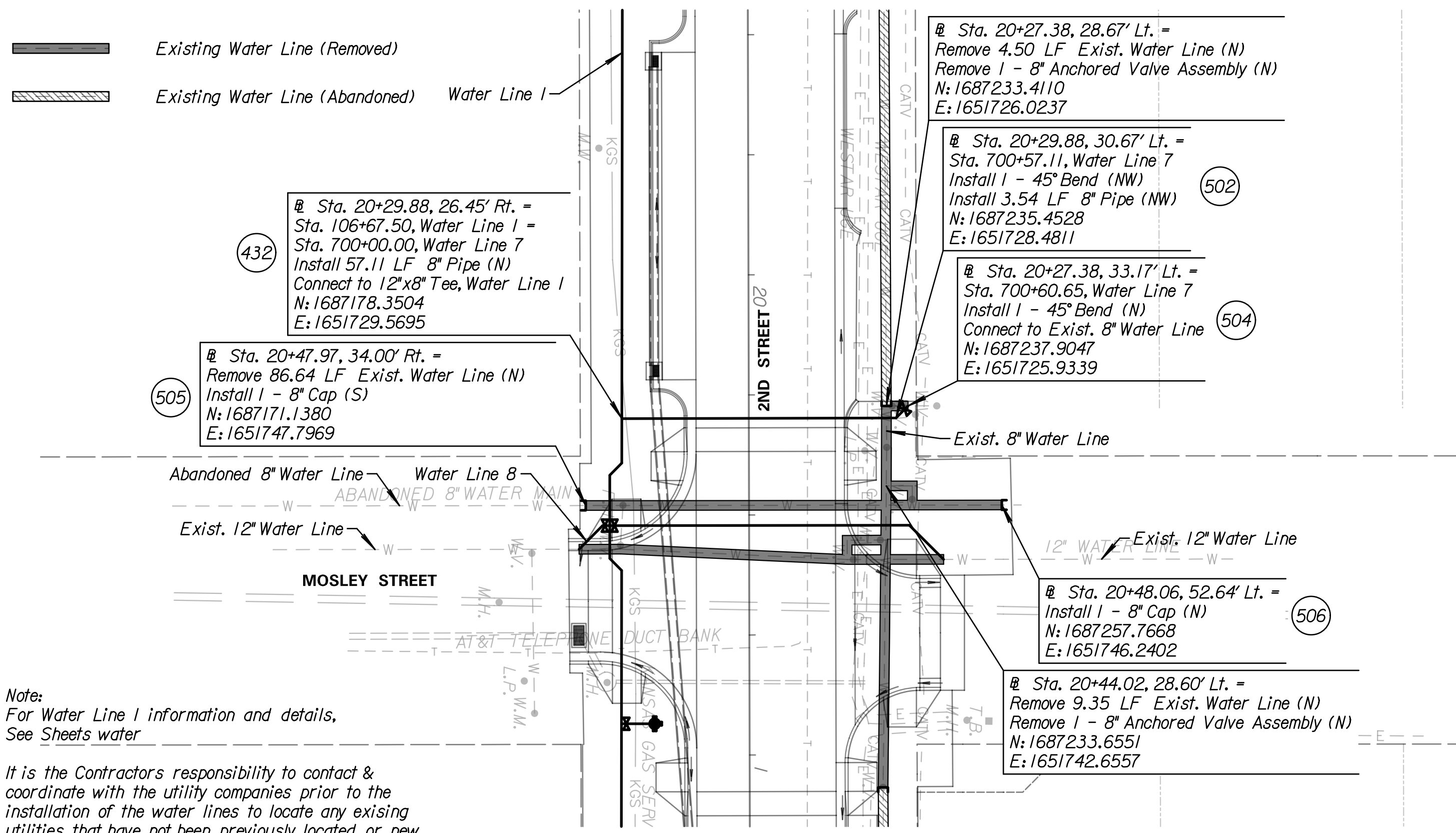


LEGEND

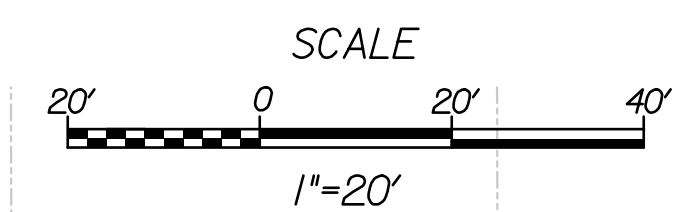
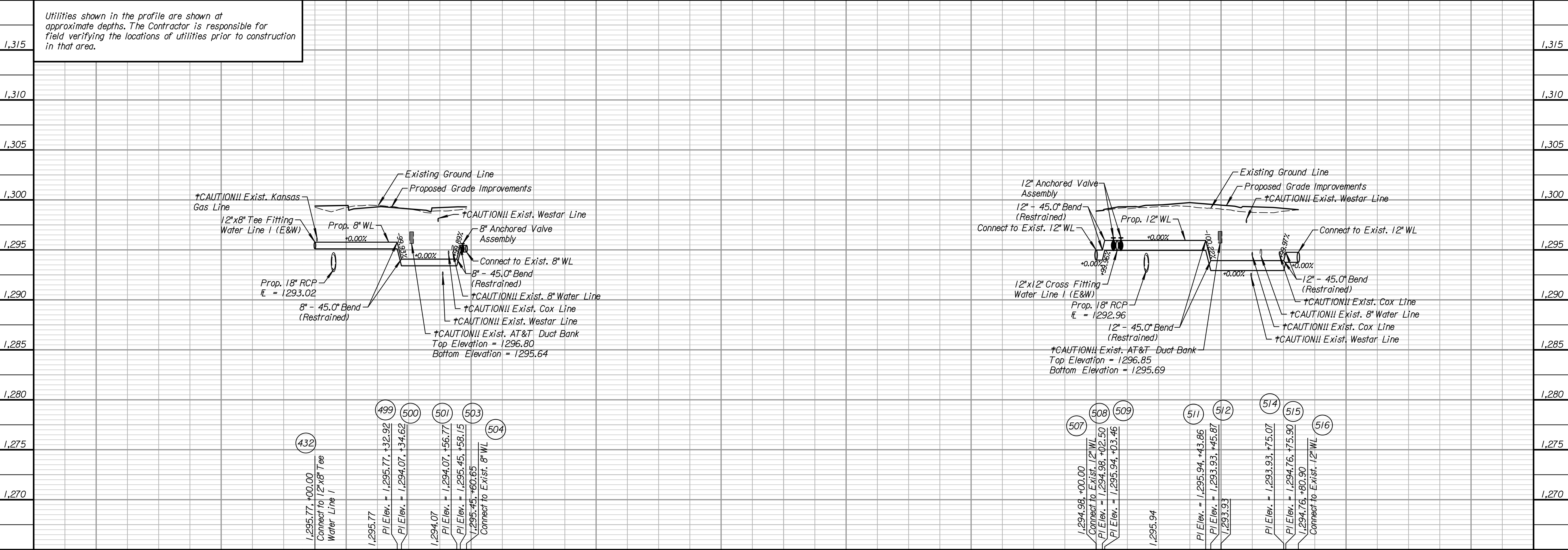
- Existing Water Line (Removed)
- Existing Water Line (Abandoned)



Note:
For Water Line 1 information and details,
See Sheets water

It is the Contractor's responsibility to contact &
coordinate with the utility companies prior to the
installation of the water lines to locate any existing
utilities that have not been previously located or new
utilities that have been relocated.

Utilities shown in the profile are shown at
approximate depths. The Contractor is responsible for
field verifying the locations of utilities prior to construction
in that area.



Tran Systems

245 NORTH WACO
SUITE 222
WICHITA, KANSAS 67202
PHONE: 316-303-3000
FAX: 316-303-0166

CONSULTANTS:

LK ARCHITECTURE, INC.

345 RIVERVIEW
SUITE 200
WICHITA, KANSAS 67208
PHONE: 316-268-0230

2ND STREET IMPROVEMENTS
SANTA FE TO WASHINGTON IN OLD TOWN
WICHITA, KANSAS

REVISIONS:	MARK	DATE	DESCRIPTION

PROJ NO: 472-85284
SCALE: 1"=20'
DATE: 7/11/2018
DESIGNED BY: TAU
DRAWN BY: TAU
CHECKED BY: MDB

SHEET TITLE:
2ND STREET WATER LINE IMPROVEMENTS LINE 7 & 8

SHEET NO.
91
SHEET 91 OF 103

7/11/2018 11:16:38 PM - c:\tran\systems\proj\local\tran\systems\proj\1\taummet\494377\C-UTL-M02-105.dgn