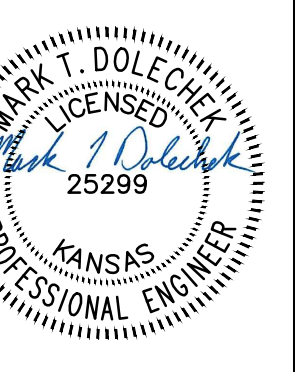


CASA BELLA SECOND ADDITION

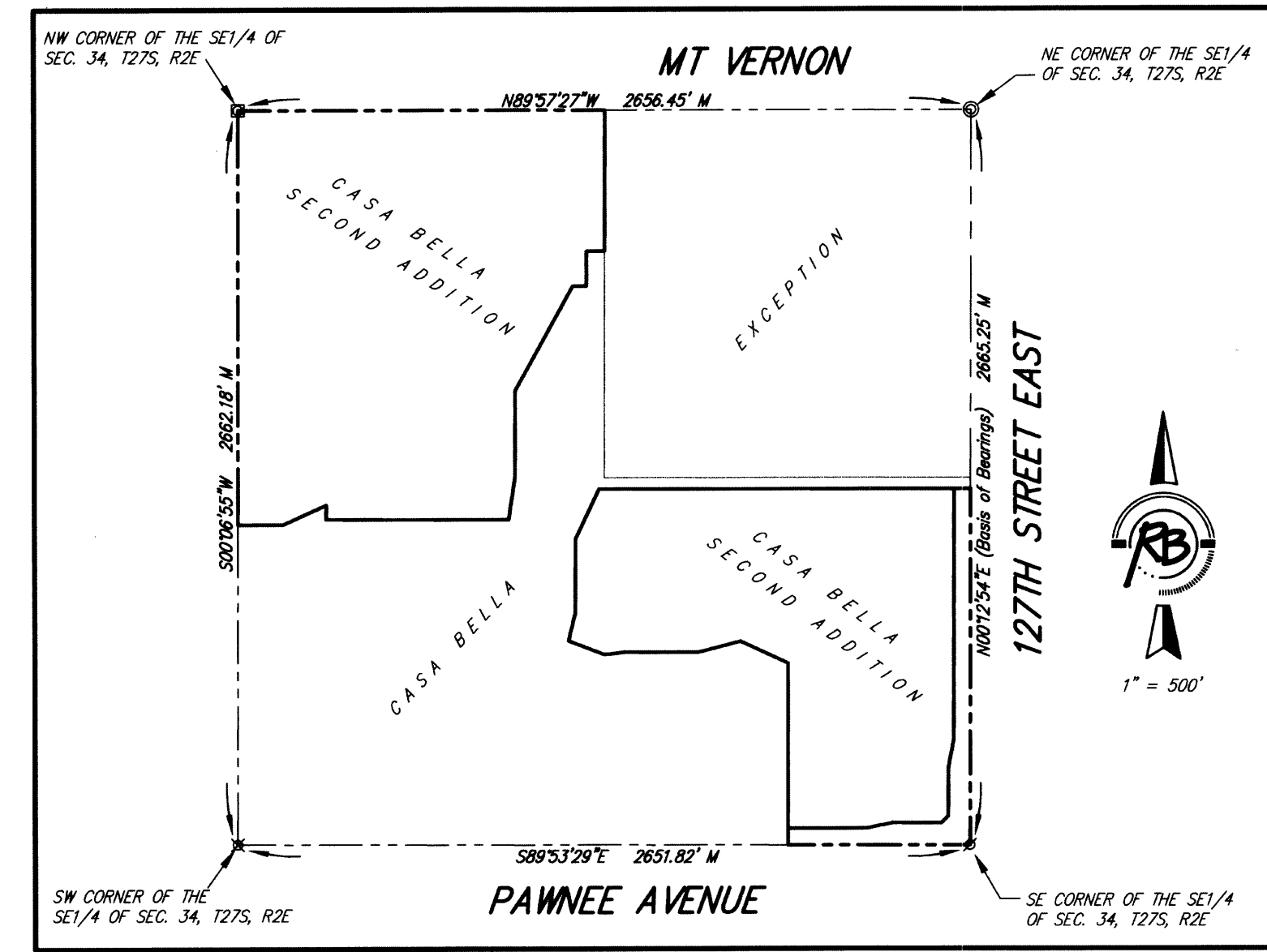
Wichita, Sedgwick County, Kansas



© 2018 GARVER, LLC
 THIS DOCUMENT, ALONG WITH THE IDEAS AND DESIGNS CONVEYED HEREIN, SHALL BE CONSIDERED INSTRUMENTS OF PROFESSIONAL SERVICE AND ARE PROPERTY OF GARVER, LLC. ANY USE, REPRODUCTION, OR DISTRIBUTION OF THIS DOCUMENT, ALONG WITH THE IDEAS AND DESIGN CONTAINED HEREIN, IS PROHIBITED UNLESS AUTHORIZED IN WRITING BY GARVER, LLC OR EXPLICITLY ALLOWED IN THE GOVERNING PROFESSIONAL SERVICES AGREEMENT FOR THIS WORK.



Digitally Signed 08/20/2018



BENCH MARK: SRB BRASS DISC 5.545" E. & 5.15" S. OF THE N.W. COR., SW1/4, SEC. 35, 127S, R2E. ELEVATION = 1348.35 (NGVD29)

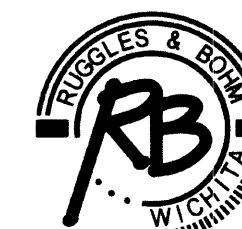
P = Plotted (Casa Bella)
 M = Measured

SURVEY MARKER LEGEND

- PK NAIL IN CONCRETE (FOUND - ORIGIN UNKNOWN)
- 1/2" IRON PIPE (FOUND - ORIGIN UNKNOWN)
- 3/4" IRON PIPE (FOUND - ORIGIN UNKNOWN)
- 5/8" REBAR W/GARBER CAP (FOUND)
- 1" BAR (FOUND - ORIGIN UNKNOWN)
- 5/8" REBAR W/SRB CAP (FOUND)
- 5/8" REBAR W/R&B CAP (FOUND)
- 5/8" REBAR W/R&B CAP (SET)

BLOCK	LOT NO.	ELEVATION (NGVD29)
2	1, 2, 3, 4, 5, 6, 7	1345.4
3	10, 11, 12	1345.4
3	1, 2, 3, 4, 5, 6, 7, 8, 9	1338.4
6	1, 2, 3, 4, 5	1336.8

SHEET 2 OF 2



Ruggles & Bohm, P.A.
 Engineering, Surveying, Land Planning
 924 North Main (316) 264-8008
 Wichita, Kansas 67203 (316) 264-4621 fax
 www.rbkansas.com E-mail: info@rbkansas.com

REV.	DATE	DESCRIPTION	BY



CITY OF WICHITA
 WICHITA, KANSAS
 CASA BELLA 2nd ADD.
 PHASE 5 - WATER

JOB NO.:
 DATE:
 DESIGNED BY:
 DRAWN BY:
 BAR IS ONE INCH ON ORIGINAL DRAWING
 IF NOT ONE INCH ON THIS SHEET, ADJUST SCALES ACCORDINGLY.
 DRAWING NUMBER
 SHEET NUMBER