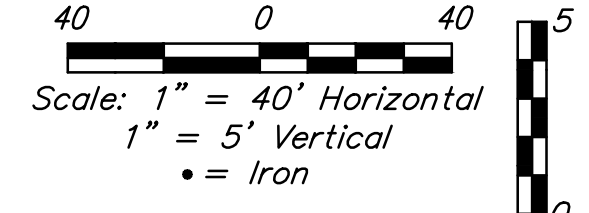
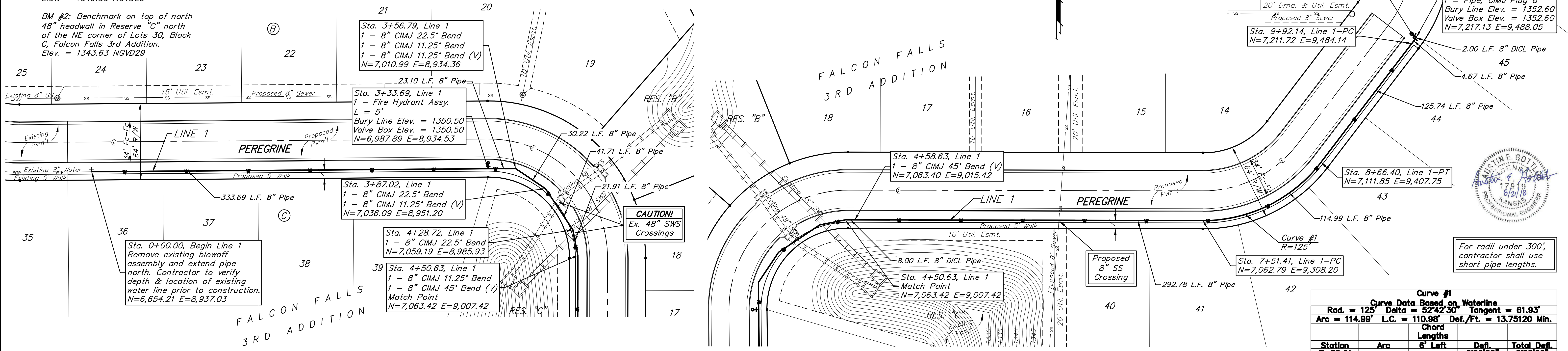


**BENCHMARKS:**  
 BM #1: Benchmark on top of north 48" headwall in Reserve "B" between Lots 18-19, Block B, Falcon Falls 3rd Addition. Elev. = 1349.35 NGVD29

BM #2: Benchmark on top of north 48" headwall in Reserve "C" north of the NE corner of Lots 30, Block C, Falcon Falls 3rd Addition. Elev. = 1343.63 NGVD29



Sta. 9+96.81, Line 1  
 1 - Valve Assembly, Anchored 8"  
 Valve Box Elev. = 1352.60  
 N=7,215.49 E=9,486.90

Sta. 9+98.81, End Line 1  
 1 - Fire Hydrant Assy.  
 L = 5'  
 1 - Pipe, CIMJ Plug 8"  
 Bury Line Elev. = 1352.60  
 Valve Box Elev. = 1352.60  
 N=7,217.13 E=9,488.05

Sta. 9+92.14, Line 1-PC  
 N=7,211.72 E=9,484.14

Sta. 8+66.40, Line 1-PT  
 N=7,111.85 E=9,407.75

Sta. 4+58.63, Line 1  
 1 - 8" CIMJ 45° Bend (V)  
 N=7,063.40 E=9,015.42

Sta. 4+50.63, Line 1  
 Match Point  
 N=7,063.42 E=9,007.42

Sta. 4+28.72, Line 1  
 1 - 8" CIMJ 22.5° Bend  
 N=7,059.19 E=8,985.93

Sta. 3+87.02, Line 1  
 1 - 8" CIMJ 11.25° Bend (V)  
 1 - 8" CIMJ 45° Bend (V)  
 Match Point  
 N=7,036.09 E=8,951.20

Sta. 3+56.79, Line 1  
 1 - 8" CIMJ 22.5° Bend  
 1 - 8" CIMJ 11.25° Bend  
 1 - 8" CIMJ 11.25° Bend (V)  
 N=7,010.99 E=8,934.36

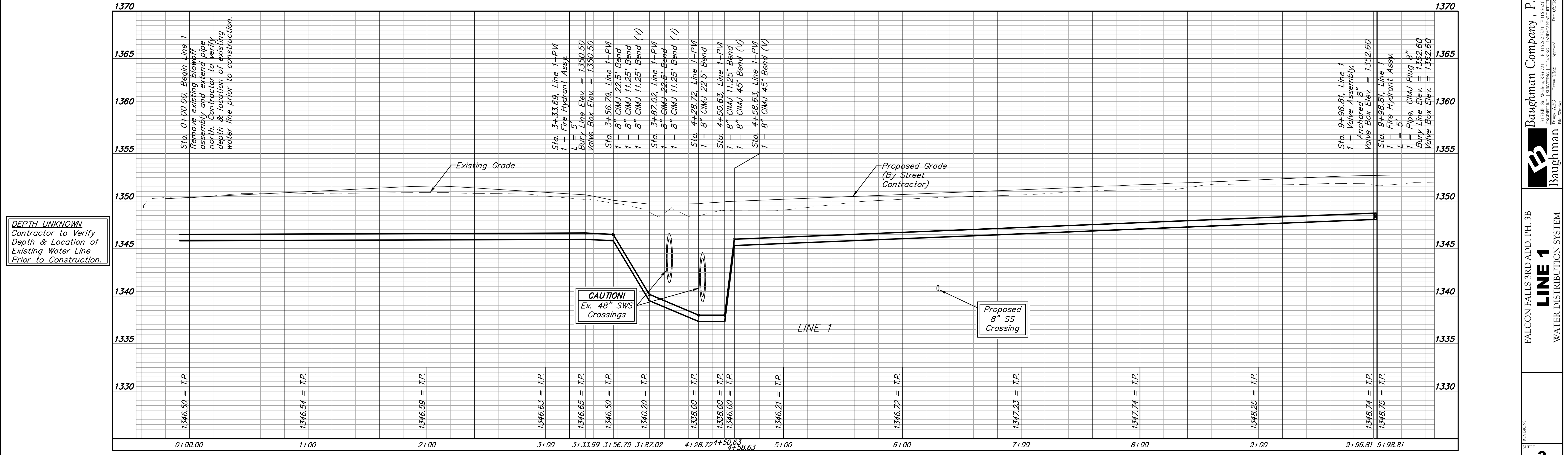
Sta. 3+33.69, Line 1  
 1 - Fire Hydrant Assy.  
 L = 5'  
 Bury Line Elev. = 1350.50  
 Valve Box Elev. = 1350.50  
 N=6,987.89 E=8,934.53



For radii under 300', contractor shall use short pipe lengths.

**Curve #1**  
 Curve Data Based on Waterline  
 Rad. = 125' Delta = 52°42'30" Tangent = 61.93'  
 Arc = 114.99' L.C. = 110.98' Def./Ft. = 13.75120 Min.

Station	Chord Lengths			Total Def.
	Arc	6' Left	Def.	
7+52.21	-	-	0'00"00"	0'00"00"
7+75.00	22.79'	21.67'	5'13"23"	5'13"23"
8+00.00	25.00'	23.76'	5'43"47"	10'57"10"
8+25.00	25.00'	23.76'	5'43"47"	16'40'57"
8+50.00	25.00'	23.76'	5'43"47"	22'24'44"
8+67.20	17.20'	16.36'	3'56"31"	26'21'15"



**DEPTH UNKNOWN**  
 Contractor to Verify Depth & Location of Existing Water Line Prior to Construction.

**Baughman Company, P.A.**  
 1515 W. Main St., Suite 200, Springfield, MO 65802  
 ENGINEERING, ARCHITECTURE, PLANNING, LANDSCAPE ARCHITECTURE  
 Justin E. Gottlieb, P.E.  
 License No. 17919, State of Missouri  
 Date: 8/21/18

FALCON FALLS 3RD ADD. PH. 3B  
**LINE 1**  
 WATER DISTRIBUTION SYSTEM