

PLOTTED: Wednesday, August 22, 2018 @ 10:15AM

STA. 28+55.67, WTR LINE 1=
ST. STA. 15+85.31, 34' RT.
1-12" DIMJ 45° VERTICAL BEND

STA. 31+10.53, WTR LINE 1=
ST. STA. 13+28.08, 34' RT.
1-12" DIMJ 90° BEND

STA. 28+45.67, WTR LINE 1=
ST. STA. 15+95.60, 34' RT.
1-12" DIMJ 45° VERTICAL BEND

20.00' OF
12" PIPE

224.86' OF 12" PIPE

STA. 31+93.20, WTR LINE 1
ST. STA. 13+16.36, 47.9' LT.
1-FIRE HYDRANT ASSEMBLY
L=20'

STA. 27+17.70, WTR LINE 1=
ST. STA. 17+27.30, 34' RT.

10.30' OF DICL
12" PIPE

82.67' OF 12" PIPE

NOTE:
CONTRACTOR TO VERIFY LOCATION
AND ELEVATION OF EXISTING WATER
LINE PRIOR TO CONSTRUCTION.

PROP 4" SSMH
TOP=1281.19
FL OUT=1271.56(E)
FL IN=1271.66(W)

STA. 28+85.67, WTR LINE 1=
ST. STA. 15+54.43, 34' RT.
1-12" DIMJ 45° VERTICAL BEND

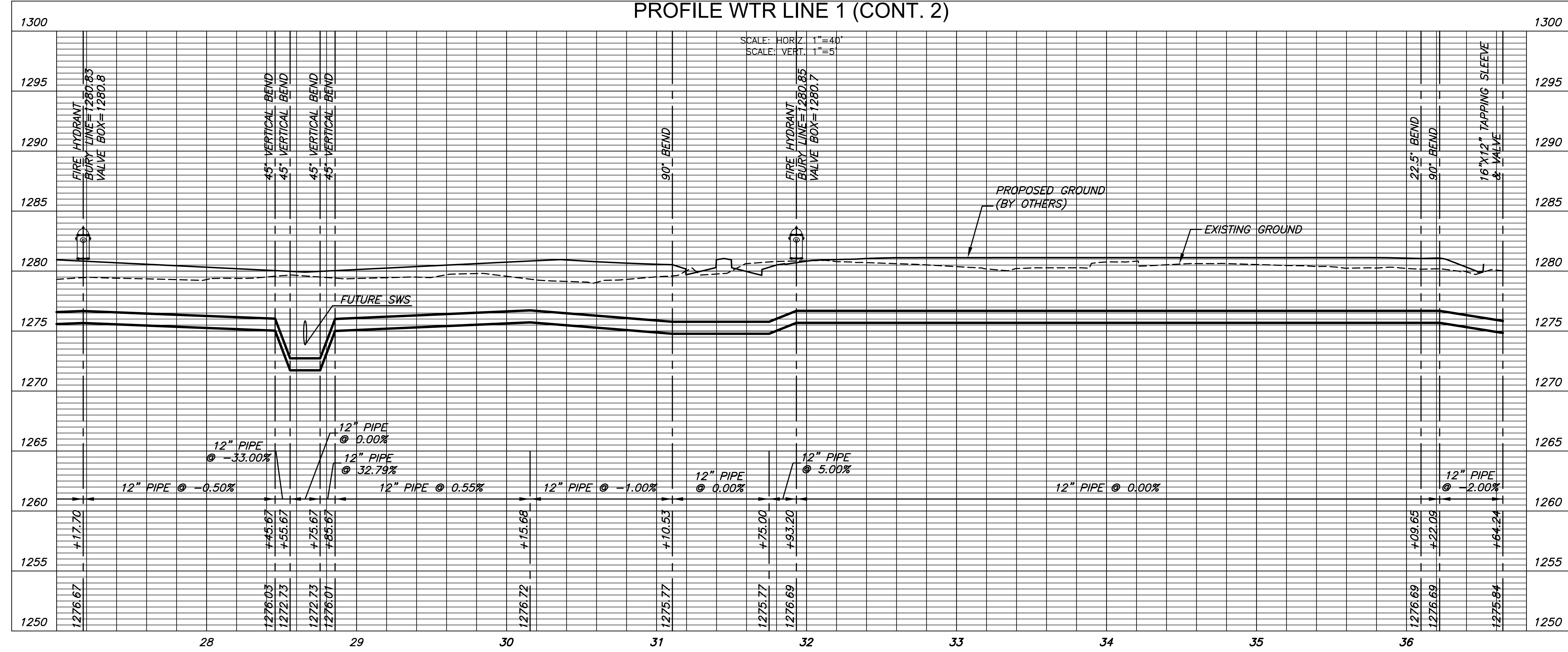
STA. 28+75.67, WTR LINE 1=
ST. STA. 15+64.73, 34' RT.
1-12" DIMJ 45° VERTICAL BEND

127.97' OF
12" PIPE

SCALE: 1"=40'

SCALE: 1"=40'

PLAN WTR LINE 1 (CONT. 2)
PROFILE WTR LINE 1 (CONT. 2)



WATER DISTRIBUTION PLANS FOR
STEEPLE BAY ADDITION
WICHITA, KANSAS

©2018
MKEC Engineering
All Rights Reserved
www.mkec.com
These drawings and their contents,
including, but not limited to, all concepts,
designs, & ideas are the exclusive
property of MKEC Engineering (MKEC),
and may not be used or reproduced in any
way without the express consent of MKEC.

WTR LINE 1
CONT.

PROJECT NO.	448-90894	
DATE	JULY 2018	
SCALE	1"=40'	
DESIGNED	DRAWN	CHECKED
SPE	MKB	SPE



NO.	REVISION	DATE