

PLOTTED: Wednesday, August 22, 2018 @ 08:50AM

J:\PROJECTS\2017\10101043_LANES_STEEPLE BAY_17143_CADD\SHOTS\65 CIVIL\SWS\17143-06-4200.DWG



STORM WATER SEWER PLAN FOR
STEEPLE BAY ADDITION
 PART A

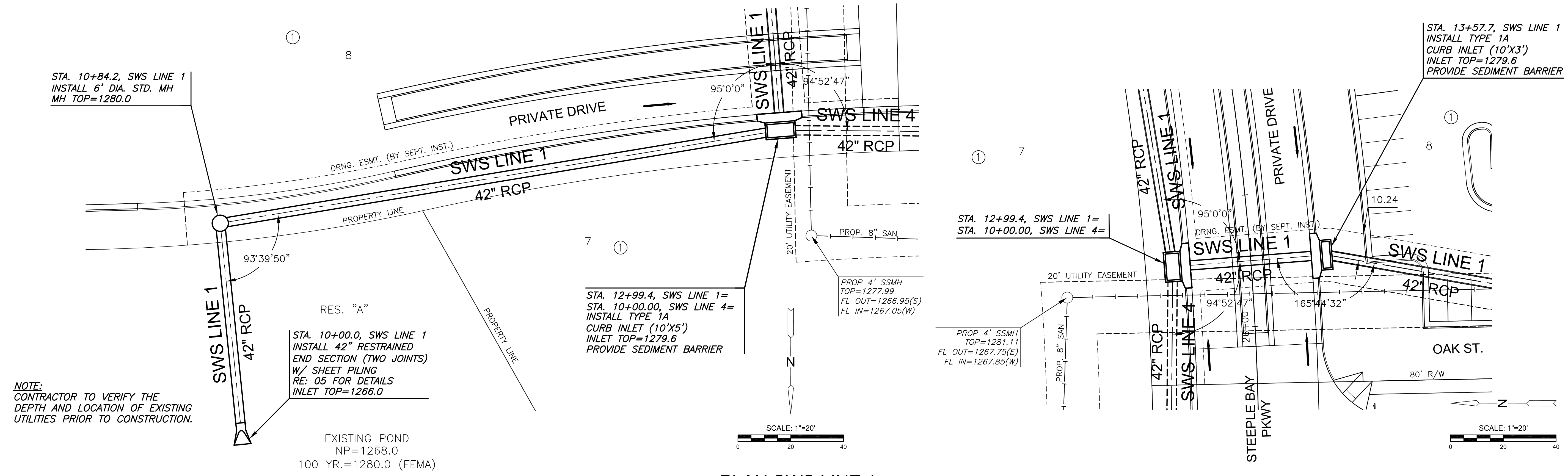
©2018 MKEC Engineering All Rights Reserved
 www.mkec.com
 These drawings and their contents, including, but not limited to, all concepts, designs, & ideas are the exclusive property of MKEC Engineering (MKEC), and may not be used or reproduced in any way without the express consent of MKEC.

SWS LINE 1

PROJECT NO.	468-85316	
DATE	JULY 2018	
SCALE	1"=20'	
DESIGNED	DRAWN	CHECKED
SPE	MKB	SPE

NO.	REVISION	DATE
-----	----------	------

SHEET NO.
06 OF 22



PLAN SWS LINE 1
 PROFILE SWS LINE 1

