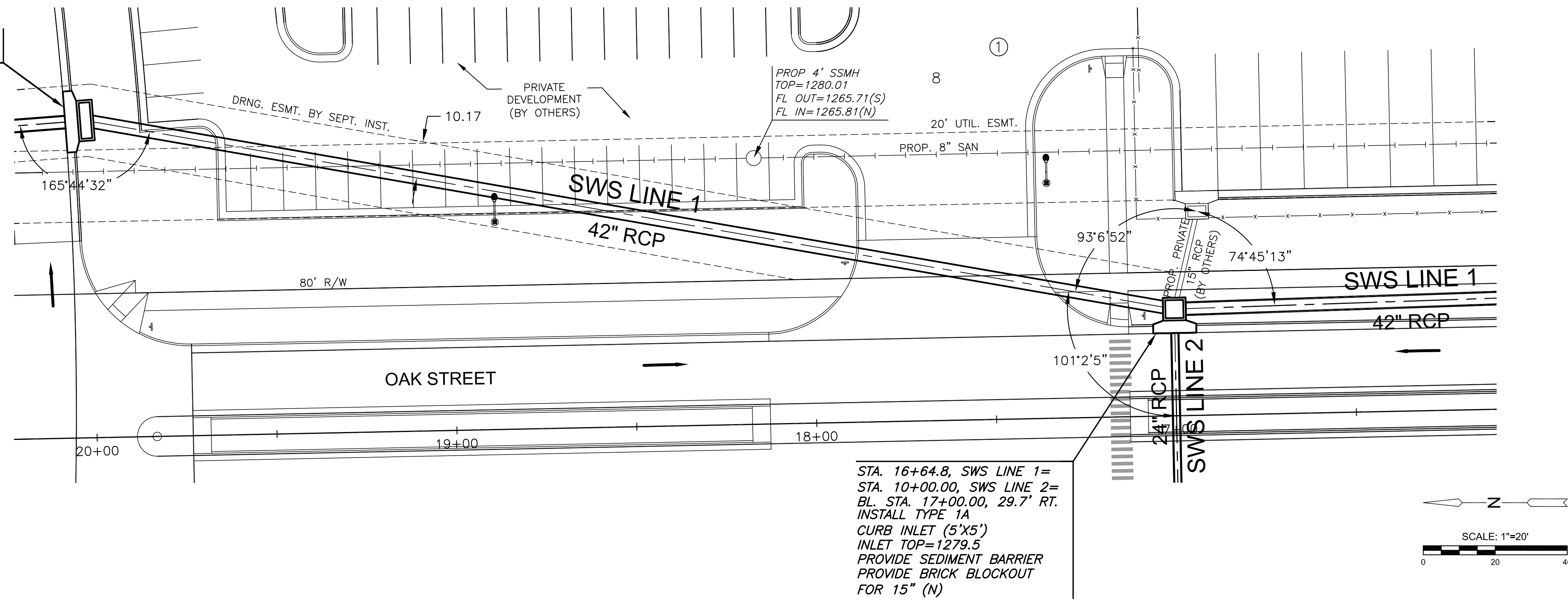


PLOTTED: Wednesday, August 22, 2018 @ 08:51 AM

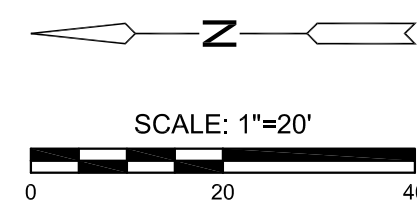
J:\PROJECTS\2017\10101043\_LANES\_STEEPLE BAY\_17143\_CAD\SHOTS\06\_CIVIL\SWIS\17143-06-4001.DWG

STA. 13+57.7, SWS LINE 1 =  
BL. STA. 26+25.00, 28.7' RT.

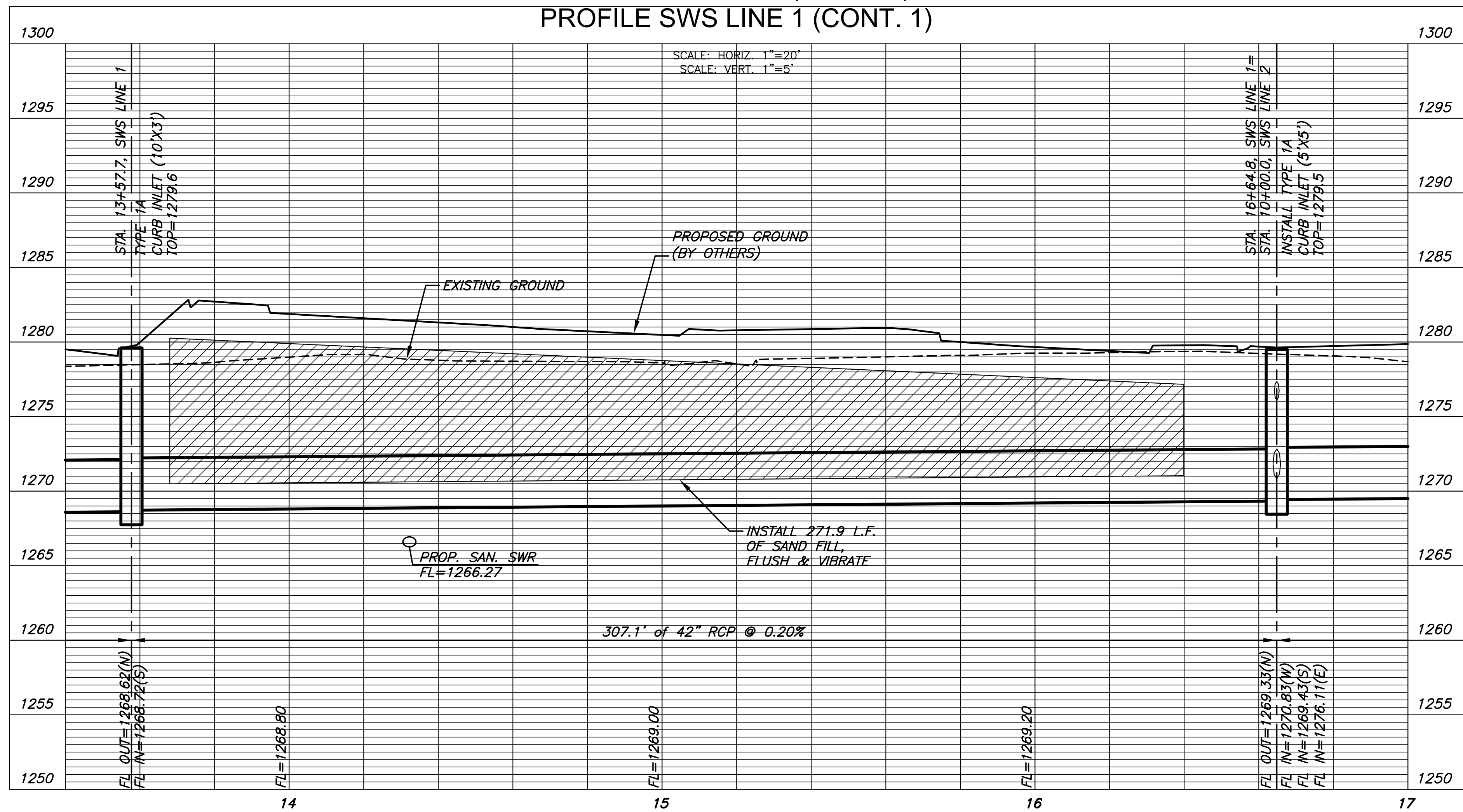


**NOTE:**  
CONTRACTOR TO VERIFY THE  
DEPTH AND LOCATION OF EXISTING  
UTILITIES PRIOR TO CONSTRUCTION.

STA. 16+64.8, SWS LINE 1 =  
STA. 10+00.00, SWS LINE 2 =  
BL. STA. 17+00.00, 29.7' RT.  
INSTALL TYPE 1A  
CURB INLET (5'X5')  
INLET TOP=1279.5  
PROVIDE SEDIMENT BARRIER  
PROVIDE BRICK BLOCKOUT  
FOR 15" (N)



PLAN SWS LINE 1 (CONT. 1)  
PROFILE SWS LINE 1 (CONT. 1)



STORM WATER SEWER PLAN FOR  
**STEEPLE BAY ADDITION**  
PART A

©2018  
MKEC Engineering  
All Rights Reserved  
www.mkec.com  
These drawings and their contents,  
including, but not limited to, all concepts,  
designs, & ideas are the exclusive  
property of MKEC Engineering (MKEC),  
and may not be used or reproduced in any  
way without the express consent of MKEC.

SWS LINE 1 CONT.		
PROJECT NO.	468-85316	
DATE	JULY 2018	
SCALE	1"=20'	
DESIGNED	DRAWN	CHECKED
SPE	MKB	SPE
NO.	REVISION	DATE
SHEET NO. 07 OF 22		