

PLOTTED: Wednesday, August 22, 2018 @ 08:52AM

J:\PROJECTS\2017\1701010143_LANGE_STEEPLE_BAY_17143_CADD\SHOTS\06_CIVIL\SWS\17143-06-4202.DWG

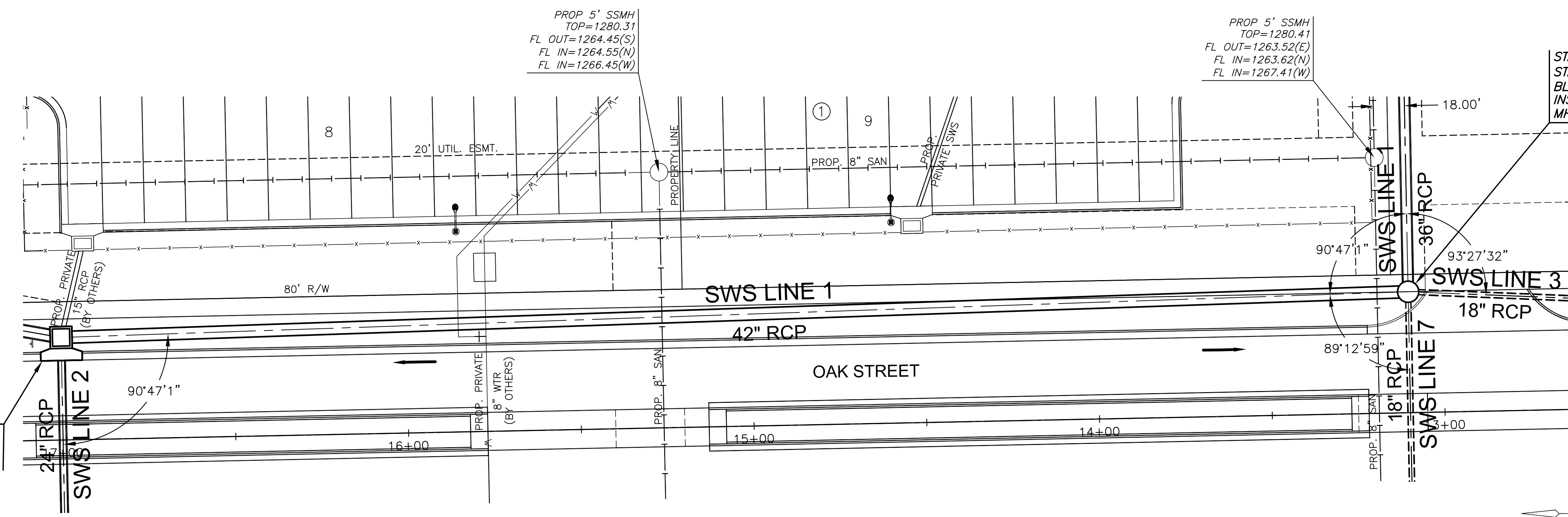


STORM WATER SEWER PLAN FOR

STEEPLE BAY ADDITION

PART A

STA. 16+64.8, SWS LINE 1=
STA. 10+00.00, SWS LINE 2=
BL. STA. 17+00.00, 29.7' RT.

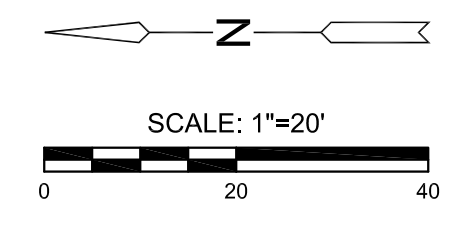


STA. 20+54.9, SWS LINE 1=
STA. 10+00.00, SWS LINE 3=
BL. STA. 13+10.00, 35.0' RT.
INSTALL 6' DIA. STD. MH
MH TOP=1280.3

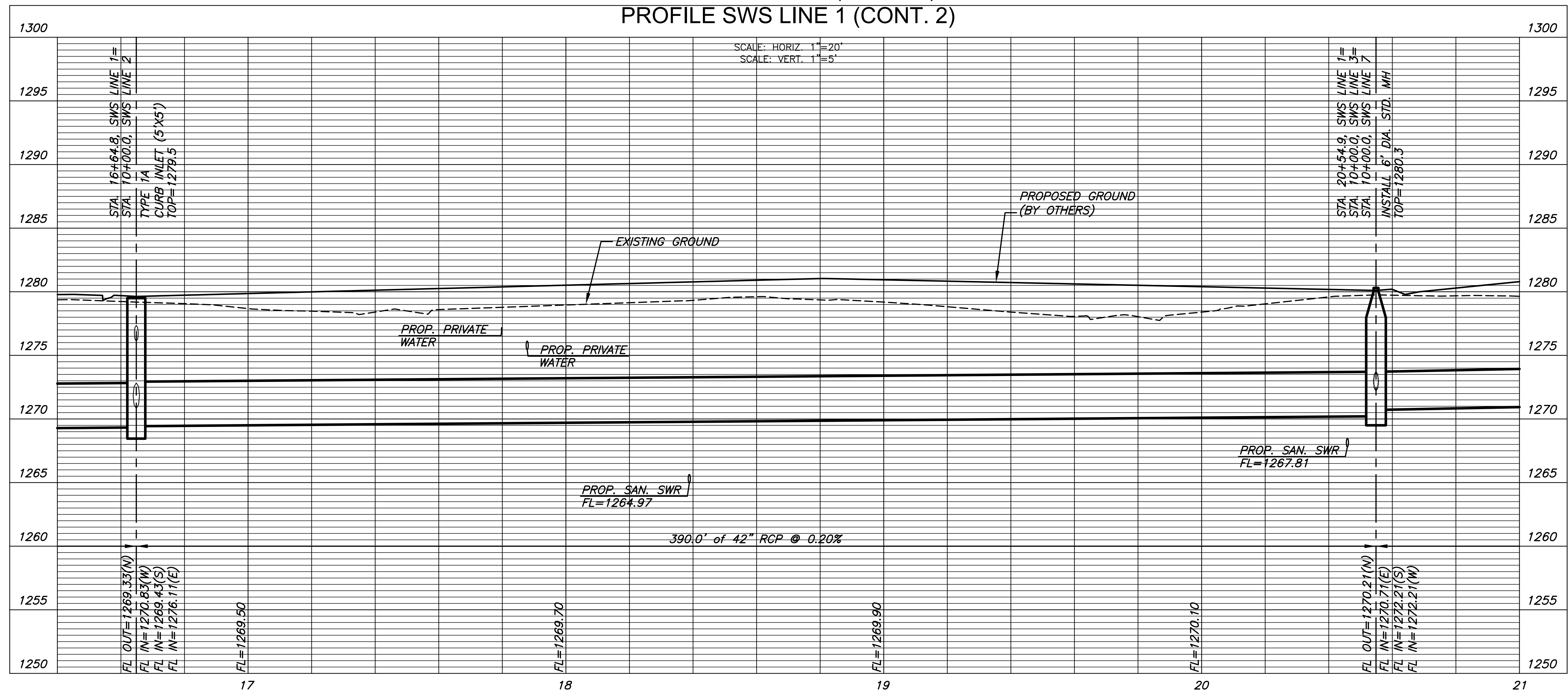
PROP 5' SSMH
TOP=1280.31
FL OUT=1264.45(S)
FL IN=1264.55(N)
FL IN=1266.45(W)

PROP 5' SSMH
TOP=1280.41
FL OUT=1263.52(E)
FL IN=1263.62(N)
FL IN=1267.41(W)

NOTE:
CONTRACTOR TO VERIFY THE
DEPTH AND LOCATION OF EXISTING
UTILITIES PRIOR TO CONSTRUCTION.



PLAN SWS LINE 1 (CONT. 2)
PROFILE SWS LINE 1 (CONT. 2)



©2018
MKEC Engineering
All Rights Reserved
www.mkec.com
These drawings and their contents, including, but not limited to, all concepts, designs, & ideas are the exclusive property of MKEC Engineering (MKEC), and may not be used or reproduced in any way without the express consent of MKEC.

SWS LINE 1
CONT.

PROJECT NO.	468-85316	
DATE	JULY 2018	
SCALE	1"=20'	
DESIGNED	DRAWN	CHECKED
SPE	MKB	SPE

NO.	REVISION	DATE

SHEET NO.
08 OF 22