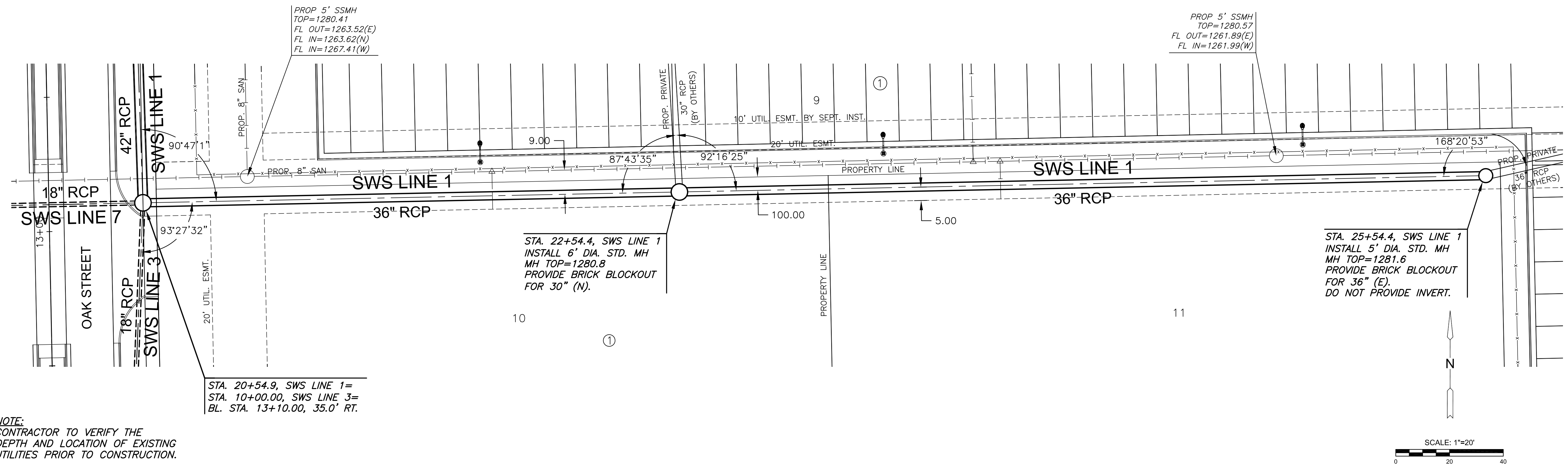


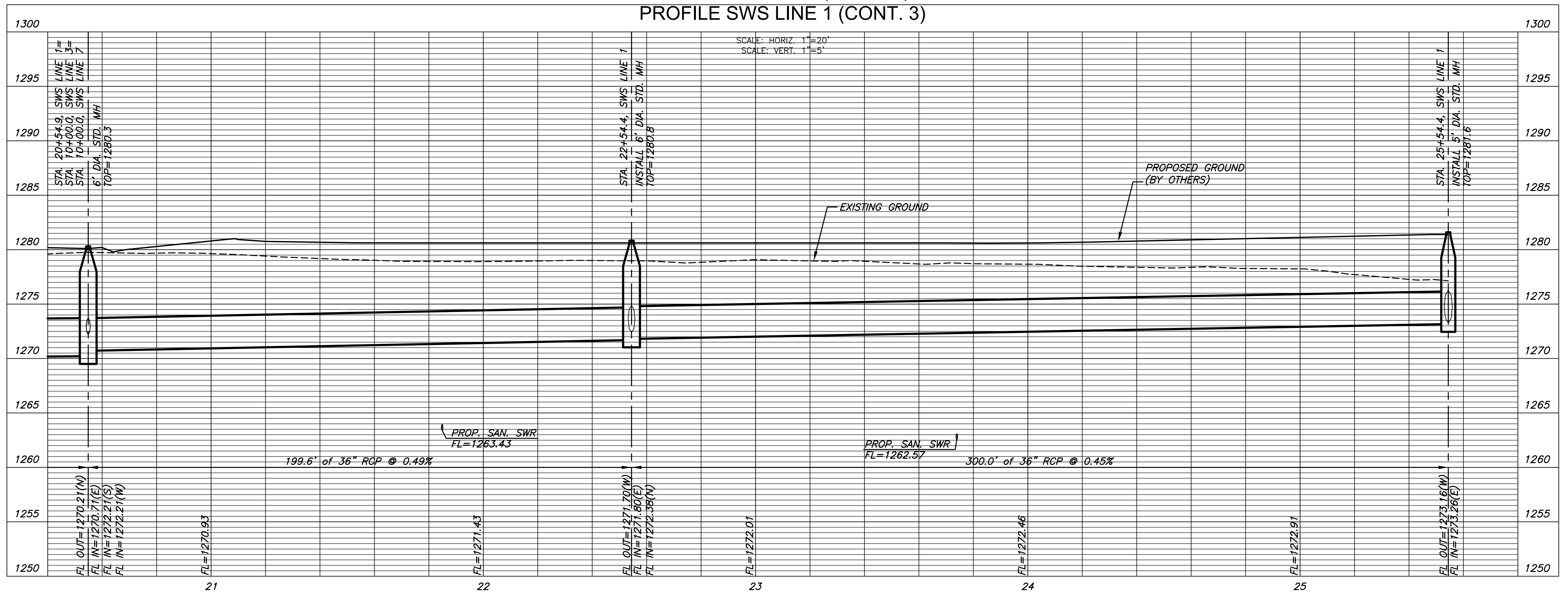
PLOTTED: Wednesday, August 22, 2018 @ 08:53AM

J:\PROJECTS\2017\10101043_LANGE_STEEPLE BAY_17143_CADD\SHOTS\6 CIVIL\SWS\17143-06-4203.DWG



NOTE:
CONTRACTOR TO VERIFY THE DEPTH AND LOCATION OF EXISTING UTILITIES PRIOR TO CONSTRUCTION.

PLAN SWS LINE 1 (CONT. 3)
PROFILE SWS LINE 1 (CONT. 3)



STORM WATER SEWER PLAN FOR
STEEPLE BAY ADDITION
PART A

©2018 MKEC Engineering All Rights Reserved
www.mkec.com
These drawings and their contents, including, but not limited to, all concepts, designs, & ideas are the exclusive property of MKEC Engineering (MKEC), and may not be used or reproduced in any way without the express consent of MKEC.

SWS LINE 1 CONT.		
PROJECT NO.	468-85316	
DATE	JULY 2018	
SCALE	1"=20'	
DESIGNED	DRAWN	CHECKED
SPE	MKB	SPE
NO.	REVISION	DATE
SHEET NO. 09 OF 22		