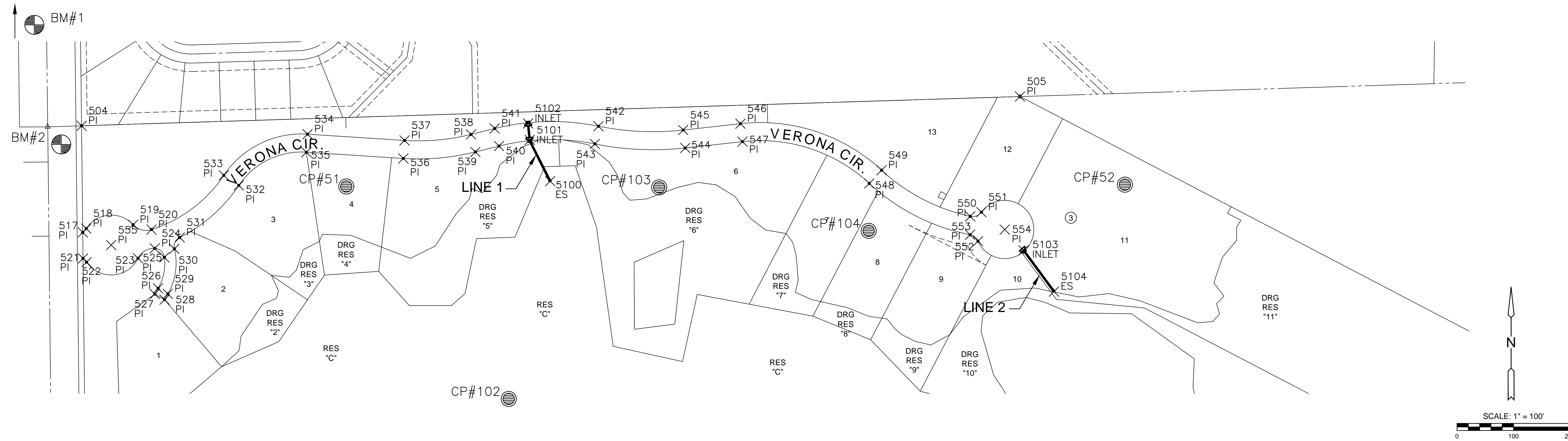


STORMWATER SEWER PLANS FOR
AUBURN LAKES ADDITION
WICHITA, KANSAS



PLOT DATE: Wednesday, September 05, 2018 @ 10:24 AM

J:\PROJECTS\2018\1601010221 - PERFECTION_AUBURN LAKES - 16221 CAD\SHOTS\05 CIVIL\SPRIVATE\16221-05-4502.DWG

PLAT POINTS			
Point #	Northing	Easting	Desc.
504	1679949.43	1602402.88	PI
505	1680001.25	1604064.86	PI
506	1679529.32	1604967.94	PI
507	1679123.02	1604970.59	PI
508	1679115.37	1604720.57	PI
509	1678110.42	1604727.18	PI
510	1678098.18	1604334.41	PI
511	1678148.17	1604332.91	PI
512	1678132.47	1603833.42	PI
513	1678102.00	1603834.46	PI
514	1678091.25	1603493.55	PI
515	1678734.35	1603473.78	PI
516	1678701.12	1602416.51	PI
517	1679760.47	1602404.94	PI
518	1679767.32	1602411.11	PI
519	1679774.12	1602494.06	PI
520	1679765.58	1602526.71	PI
521	1679714.46	1602405.45	PI
522	1679707.74	1602411.76	PI
523	1679714.63	1602502.83	PI
524	1679732.20	1602532.41	PI
525	1679716.27	1602549.54	PI
526	1679661.42	1602538.32	PI
527	1679651.19	1602532.49	PI
528	1679641.29	1602549.86	PI

PLAT POINTS			
Point #	Northing	Easting	Desc.
529	1679651.52	1602555.69	PI
530	1679731.29	1602567.18	PI
531	1679751.51	1602576.60	PI
532	1679843.75	1602681.30	PI
533	1679861.63	1602654.77	PI
534	1679934.52	1602803.09	PI
535	1679902.59	1602801.03	PI
536	1679891.53	1602972.78	PI
537	1679923.46	1602974.83	PI
538	1679934.13	1603092.60	PI
539	1679903.08	1603100.36	PI
540	1679913.54	1603142.21	PI
541	1679944.59	1603134.45	PI
542	1679948.64	1603318.27	PI
543	1679917.29	1603311.88	PI
544	1679910.10	1603471.92	PI
545	1679941.90	1603468.38	PI
546	1679953.19	1603569.72	PI
547	1679921.39	1603573.27	PI
548	1679847.25	1603797.96	PI
549	1679870.70	1603819.74	PI
550	1679788.92	1603976.75	PI
551	1679796.34	1603996.49	PI
552	1679744.98	1603990.59	PI
553	1679756.31	1603976.48	PI

PLAT POINTS			
Point #	Northing	Easting	Desc.
554	1679765.57	1604037.79	PI
555	1679738.01	1602455.27	PI
556	1679254.84	1602410.46	PI
557	1679254.95	1602417.16	PI
558	1679232.01	1602437.16	PI
559	1679226.19	1602438.51	PI
560	1679222.43	1602415.96	PI
561	1679222.34	1602410.82	PI
562	1679230.34	1602410.73	PI
563	1679230.46	1602417.58	PI
564	1679199.84	1602411.06	PI
565	1679199.93	1602416.35	PI
566	1679231.25	1602487.33	PI
567	1679255.13	1602513.30	PI
568	1679284.13	1602498.34	PI
569	1679316.35	1602590.15	PI
570	1679310.97	1602617.13	PI
571	1679372.31	1602609.04	PI
572	1679334.96	1602640.10	PI
573	1679359.26	1602644.90	PI
574	1679430.40	1602995.69	PI
575	1679404.32	1602974.14	PI
576	1679380.92	1602984.85	PI
577	1679369.11	1603014.59	PI
578	1679379.40	1603037.98	PI

PLAT POINTS			
Point #	Northing	Easting	Desc.
579	1679197.71	1602950.38	PI
580	1679197.57	1602982.38	PI
581	1679041.03	1602949.69	PI
582	1679040.89	1602981.69	PI
583	1679017.33	1602979.17	PI
584	1678997.32	1602989.10	PI
585	1678969.03	1602974.08	PI
586	1678964.72	1602952.74	PI
587	1678925.46	1602869.34	PI
588	1678957.44	1602868.33	PI
589	1678921.35	1602738.65	PI
590	1678953.33	1602737.64	PI
591	1678955.16	1602653.08	PI
592	1678958.03	1602631.40	PI
593	1678985.44	1602614.87	PI
594	1679005.95	1602623.31	PI
595	1678936.05	1602553.93	PI
596	1678968.03	1602552.92	PI
597	1678933.91	1602485.83	PI
598	1678965.89	1602484.83	PI
599	1679045.87	1602619.32	PI

EVERY ATTEMPT HAS BEEN MADE TO INSURE ALL COORDINATE VALUES SHOWN ARE AN ACCURATE AND TRUE REPRESENTATION OF THE CURRENT PLANS. ALL VALUES ARE TO BE CONFIRMED WITH THE FINAL SIGNED PLAN SET BEFORE USE.

BENCHMARKS

BM#1 SQUARE CUT ON EAST NOSE OF CENTER ISLAND, 50 FEET WEST OF 135TH STREET WEST AND ONEWEEW STREET INTERSECTION. ELEV.=1350.35 NAVD88

BM#2 SQUARE CUT ON NORTHEAST CORNER CURB INLET, EAST SIDE OF 135TH STREET WEST, 33 FEET SOUTH OF NW 1/4, SEC. 25, T27S, R2W OF THE 6TH P.M. ELEV.=1346.29 NAVD88

CONTROL POINTS

CP #50 N=1678624.564 E=1602578.219 ELEV=1351.95

CP #51 N=1679841.802 E=1602871.517 ELEV=1341.11

CP #52 N=1679845.035 E=1604250.573 ELEV=1325.59

CP #53 N=1679250.123 E=1603773.777 ELEV=1334.71

CP #54 N=1678264.682 E=1604718.113 ELEV=1318.68

CP #100 N=1678734.346 E=1603473.779 ELEV=1331.10

CP #101 N=1679264.078 E=1602501.052 ELEV=1339.45

CP #102 N=1679465.148 E=1603152.200 ELEV=1341.04

CP #103 N=1679840.258 E=1603425.756 ELEV=1337.52

CP #104 N=1679763.186 E=1603796.746 ELEV=1336.52

CP #105 N=1678869.689 E=1604179.776 ELEV=1324.95

CP #106 N=1679180.316 E=1604193.435 ELEV=1332.59

CP #107 N=1678794.958 E=1604458.201 ELEV=1326.57

STORM WATER SEWER POINTS			
Point #	Northing	Easting	Desc.
5100	1679851.26	1603232.74	ES
5101	1679924.33	1603196.53	INLET
5102	1679953.49	1603193.58	INLET
5103	1679728.54	1604071.17	INLET
5104	1679655.64	1604125.16	ES

BUBBLE MAP

PROJECT NO. 468-85307

DATE SEPT. 2018

SCALE 1" = 100'

DESIGNED DRAWN CHECKED
ABW RWB DFL

NO.	REVISION	DATE

SHEET NO.