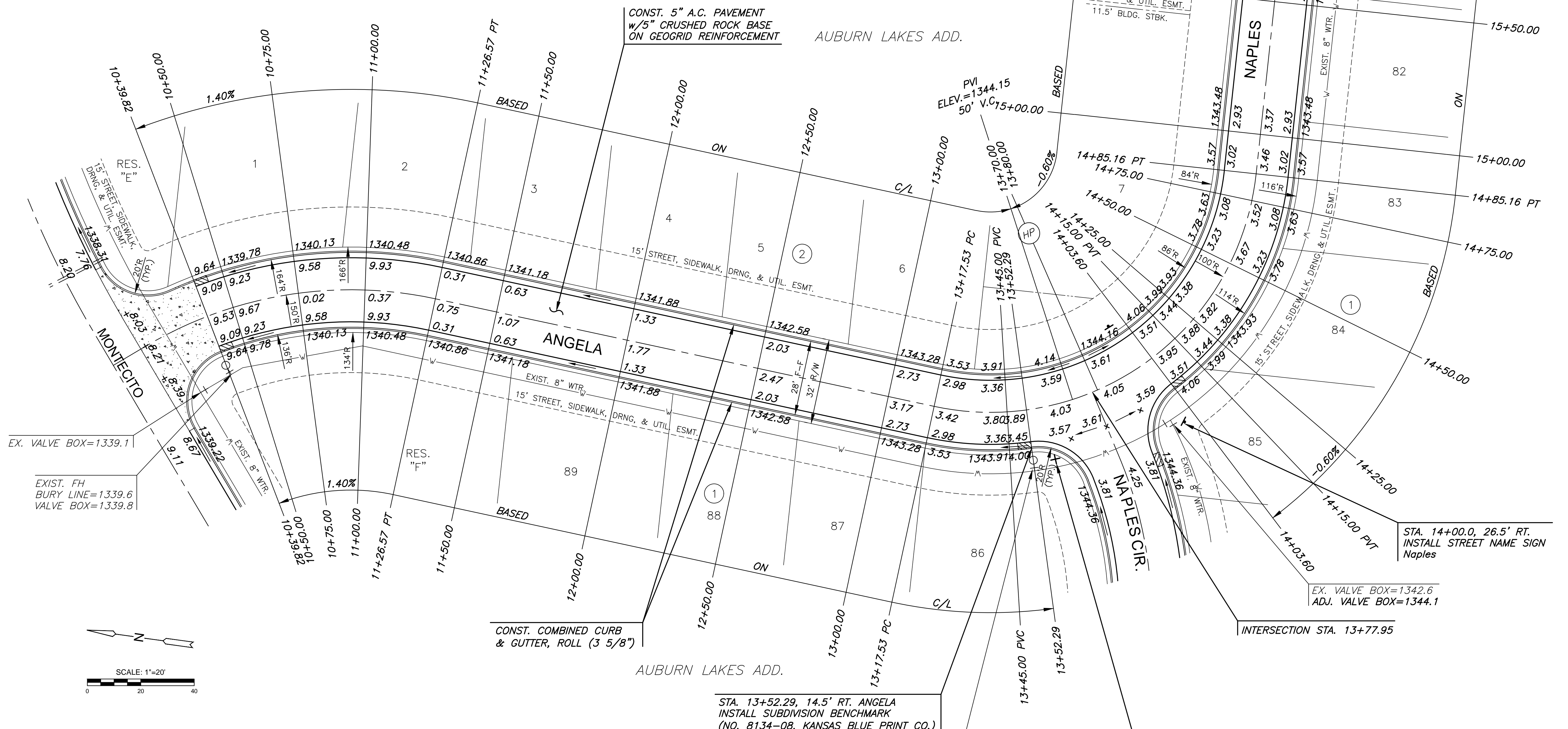


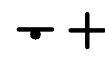
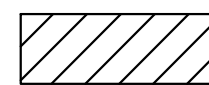
PAVING & INCIDENTAL DRAINAGE FOR
AUBURN LAKES ADDITION
PHASE 1

SUBDIVISION BENCH MARKS				
NO.	STREET AND STATION	FROM CL	DESCRIPTION	ELEVATIONS
1	ANGELA, STA. 13+52.29	14.5' RT.	N CURB RETURN OF ANGELA AND NAPLES CIR.	

NOTE: CONTRACTOR SHALL INSTALL SUBDIVISION BENCH MARKS ("FLAT SURVEY MARKERS NO. 8134-08 3" TOP DIAMETER" PROVIDED BY KANSAS BLUE PRINT CO., INC.) COSTS TO BE CONSIDERED SUBSIDIARY TO CONSTRUCTION OF COMBINED CURB AND GUTTER.



LEGEND

-  STREET SIGN & SIGN LOCATION (SEE SIGN ASSEMBLY TABLE FOR TYPE & STATION OF SIGN)
-  5' TRANSITION FROM FULL TO ROLL CURB

- NOTES:**
1. TOP OF CURB ELEVATIONS SHOWN ARE FOR FULL CURB. CONSTRUCT CURB AND GUTTER AS NOTED.
 2. PVC SLEEVES TO BE BURIED AT A DEPTH OF 2' TO TOP OF SLEEVE, MINIMUM.

©2018 MKEC Engineering All Rights Reserved www.mkec.com
These drawings and their contents, including, but not limited to, all concepts, designs, & ideas are the exclusive property of MKEC Engineering (MKEC), and may not be used or reproduced in any way without the express consent of MKEC.

ANGELA TO NAPLES

PROJECT NO.	472-85327	
DATE	SEPT. 2018	
SCALE	1" = 20'	
DESIGNED	DRAWN	CHECKED
DFL	JWC	GJA

NO.	REVISION	DATE

J:\PROJECTS\2018\1801010221 - PERFECTION, AUBURN LAKES - 18221 CAD\SHIT\S05 CIVIL\PAV\18221-05-6202.DWG