

PAVING & INCIDENTAL DRAINAGE FOR
AUBURN LAKES ADDITION
PHASE 1

©2018
MKEC Engineering
All Rights Reserved
www.mkec.com
These drawings and their contents, including, but not limited to, all concepts, designs, & ideas are the exclusive property of MKEC Engineering (MKEC), and may not be used or reproduced in any way without the express consent of MKEC.

NAPLES TO FORESTVIEW

PROJECT NO. 472-85327

DATE SEPT. 2018

SCALE 1" = 20'

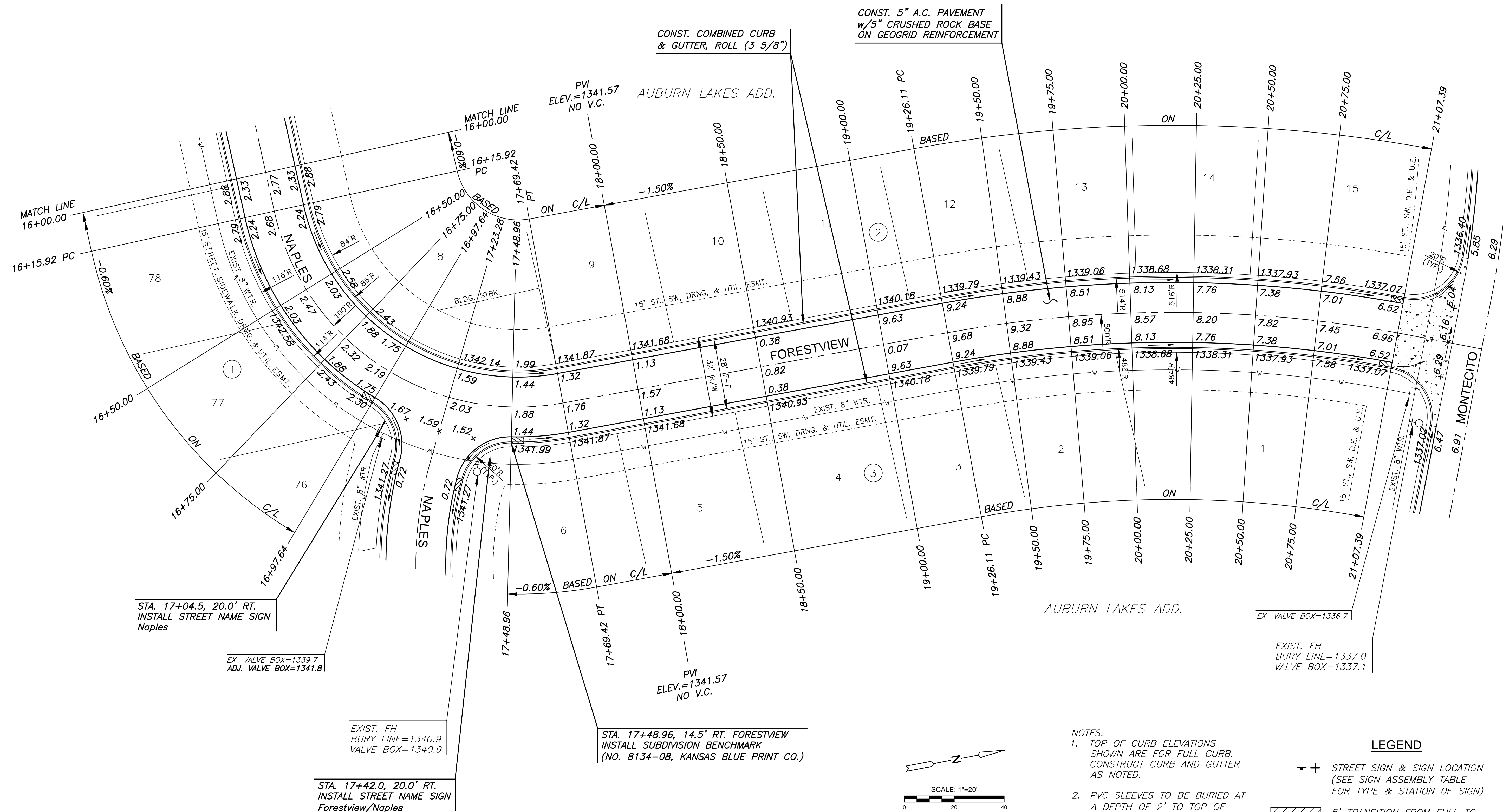
DESIGNED DRAWN CHECKED
DFL JWC GJA

NO. REVISION DATE

SHEET NO.

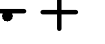

SUBDIVISION BENCH MARKS				
NO.	STREET AND STATION	FROM CL	DESCRIPTION	ELEVATIONS
1	NAPLES, STA. 17+48.96	14.5' RT.	N CURB RETURN OF NAPLES AND FORESTVIEW	

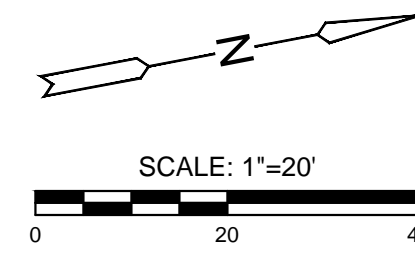
NOTE: CONTRACTOR SHALL INSTALL SUBDIVISION BENCH MARKS ("FLAT SURVEY MARKERS NO. 8134-08 3" TOP DIAMETER" PROVIDED BY KANSAS BLUE PRINT CO., INC.) COSTS TO BE CONSIDERED SUBSIDIARY TO CONSTRUCTION OF COMBINED CURB AND GUTTER.



- NOTES:
- TOP OF CURB ELEVATIONS SHOWN ARE FOR FULL CURB. CONSTRUCT CURB AND GUTTER AS NOTED.
 - PVC SLEEVES TO BE BURIED AT A DEPTH OF 2' TO TOP OF SLEEVE, MINIMUM.

LEGEND

	STREET SIGN & SIGN LOCATION (SEE SIGN ASSEMBLY TABLE FOR TYPE & STATION OF SIGN)
	5' TRANSITION FROM FULL TO ROLL CURB



J:\PROJECTS\2018\1601010221 - PERFECTION_AUBURN_LAKES_16221 CAD\SHIT\505 CIVIL\PAV\16221-05-6203.DWG PLOTTED: Thursday, September 06, 2018 9:08:12AM