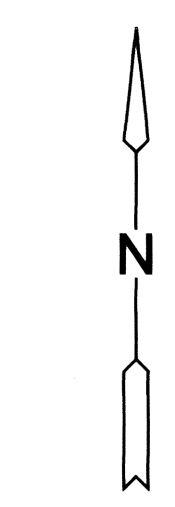
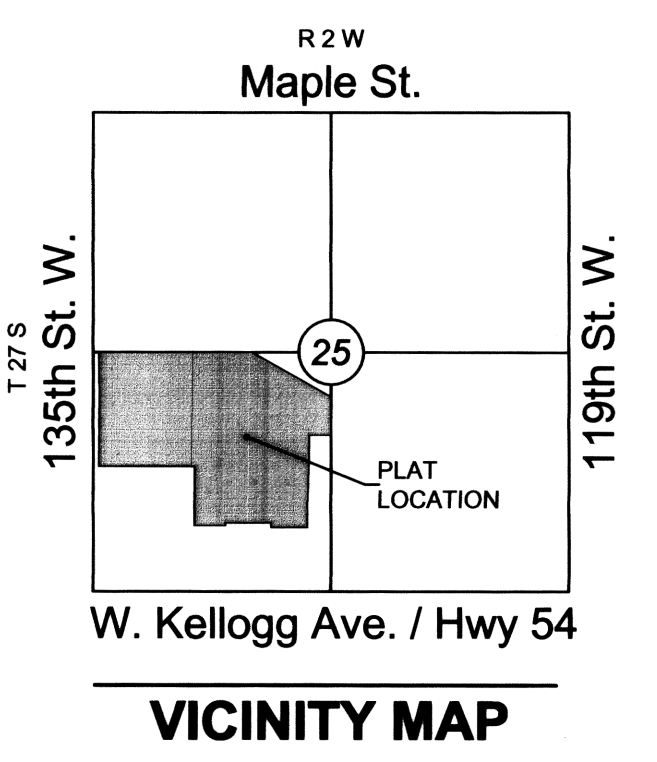


FINAL PLAT

AUBURN LAKES ADDITION

AN ADDITION TO WICHITA, SEDGWICK COUNTY, KANSAS

lying within in a portion of the Southwest Quarter of Section 25,
Township 27 South, Range 2 West of the 6th Principal Meridian



SCALE: 1"=60'

Basis of Bearings: Kansas coordinate system of 1983 south zone bearing of S88°11'57"W on the south line of the Southwest Quarter, Section 25, Township 27 South, Range 2 West of the 6th Principal Meridian.

This plat is surveyed and platted on NAD83 using Kansas state plane south zone coordinates, modified to the surface, having a combined adjustment scale factor of 1.000120014401728

LEGEND

- Date of Survey: 9/17/17
- △ = Section Corner Monument Found
 - = Found monument (see annotation for type)
 - = Set 3/4" rebar w/ MKEC CLS 39 id. cap
 - ⊕ = Benchmark
 - (M) = Measured
 - (P) = Platted
 - (D) = Described
 - (CM) = Calculated from Measurement
 - (CP) = Calculated from Plat
 - (CD) = Calculated from Described
 - Dmg. = Drainage
 - Util. = Utility
 - Sdwk. = Sidewalk
 - St. = Street
 - Esmt. = Easement
 - ① = Lot
 - ② = Block

BENCHMARKS

- BM#1 Square Cut on east nose of center island, 50 feet west of 135th Street West and Onewood Street intersection.
Elev.=1350.35 NAVD88
- BM#2 Square Cut on northeast corner curb inlet, east side of 135th Street West, 33 feet south of NW 1/4, Sec. 25, T27S, R2W of the 6th P.M.
Elev.=1346.29 NAVD88

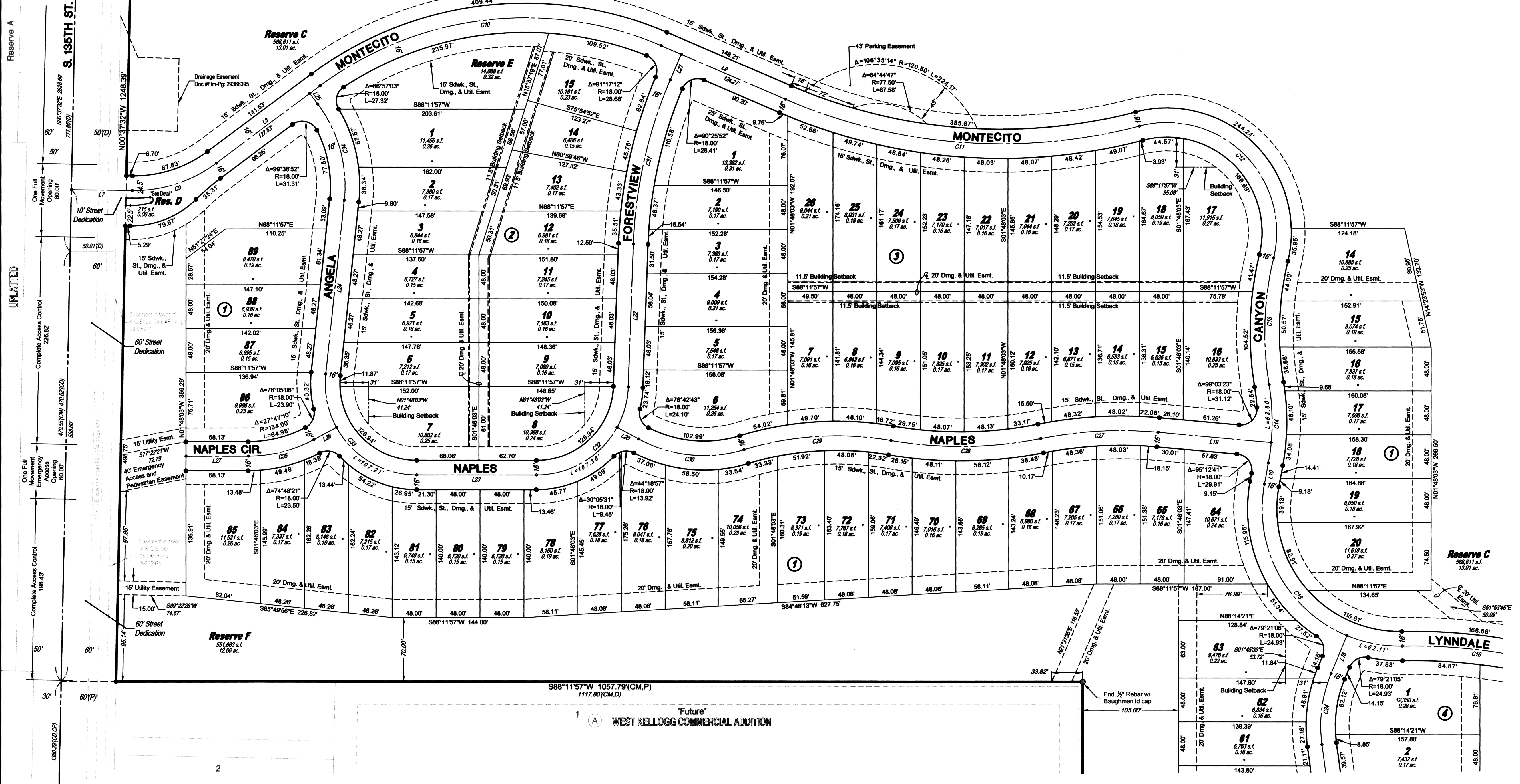
LOT(S) inclusive	BLOCK	ELEVATION
14	1	1330.2
15-20	1	1327.9
89	1	1342.5
1	2	1341.0
15	2	1337.2
1	3	1337.2
17-26	3	1333.2
1-2	4	1329.2

Line #	Length	Direction
L7	66.80'	N89°00'39"E
L8	141.53'	N51°27'24"E
L9	148.21'	S88°32'43"E
L10	23.60'	S08°35'30"W
L16	44.98'	N20°42'16"E
L19	124.05'	N86°37'11"W
L20	26.72'	N63°18'46"W
L21	30.49'	S21°27'17"W
L22	156.68'	S00°14'57"W

Curve #	Length	Radius	Delta	Chord Direction	Chord Length
C27	129.31'	450.00'	16°27'52"	S85°08'53"W	128.87'
C28	164.99'	450.00'	21°00'27"	S87°25'11"W	164.07'
C29	169.09'	350.00'	26°41'54"	S84°34'28"W	161.62'
C30	119.02'	150.00'	45°27'44"	N86°02'38"W	115.92'
C31	185.05'	500.00'	21°12'20"	S10°51'07"W	184.00'
C32	153.50'	100.00'	87°57'00"	S44°13'27"W	138.87'
C33	167.63'	100.00'	96°02'33"	N43°46'46"W	148.68'
C34	112.01'	150.00'	42°47'07"	N17°09'03"W	109.43'
C35	74.81'	150.00'	28°34'29"	S73°54'43"W	74.04'

Curve #	Length	Radius	Delta	Chord Direction	Chord Length
C9	98.32'	150.00'	37°33'15"	N70°14'02"E	96.57'
C10	392.69'	375.00'	59°59'53"	N81°27'21"E	374.99'
C11	396.23'	350.00'	37°50'16"	S87°27'51"E	389.07'
C12	247.23'	120.00'	118°02'34"	S47°21'42"E	205.77'
C13	139.81'	350.00'	22°51'17"	S00°13'57"W	138.89'
C14	86.34'	250.00'	19°47'12"	S01°18'06"E	85.91'
C15	266.02'	150.00'	101°36'44"	S42°12'52"E	232.50'
C16	164.28'	600.00'	15°41'17"	S85°10'35"E	163.77'
C24	79.44'	150.00'	30°20'34"	N05°31'59"E	78.51'

Curve #	Length	Radius	Delta	Chord Direction	Chord Length
C9	98.32'	150.00'	37°33'15"	N70°14'02"E	96.57'
C10	392.69'	375.00'	59°59'53"	N81°27'21"E	374.99'
C11	396.23'	350.00'	37°50'16"	S87°27'51"E	389.07'
C12	247.23'	120.00'	118°02'34"	S47°21'42"E	205.77'
C13	139.81'	350.00'	22°51'17"	S00°13'57"W	138.89'
C14	86.34'	250.00'	19°47'12"	S01°18'06"E	85.91'
C15	266.02'	150.00'	101°36'44"	S42°12'52"E	232.50'
C16	164.28'	600.00'	15°41'17"	S85°10'35"E	163.77'
C24	79.44'	150.00'	30°20'34"	N05°31'59"E	78.51'



NW cor., SW 1/4, Sec. 25, T27S, R2W, 6th P.M.
Fnd. 1" Iron Pipe in Thimble

SW cor., SW 1/4, Sec. 25, T27S, R2W, 6th P.M.
Fnd. 3/4" Iron Pipe in Thimble

