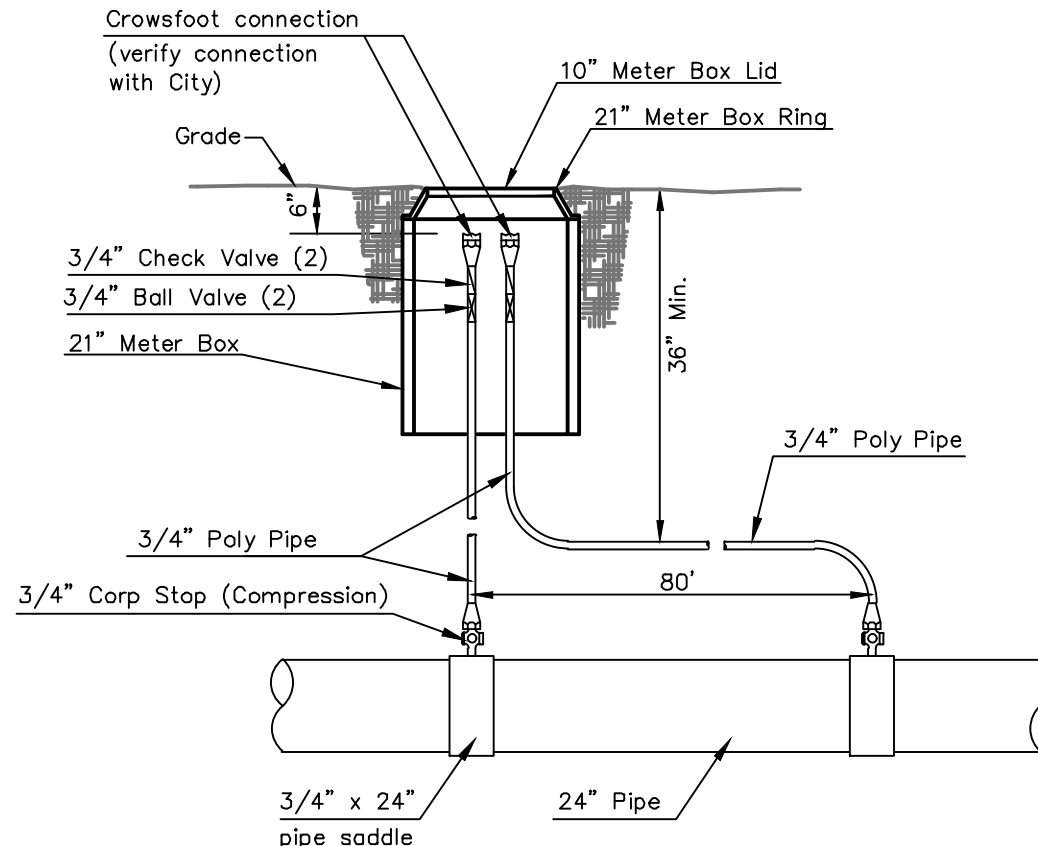
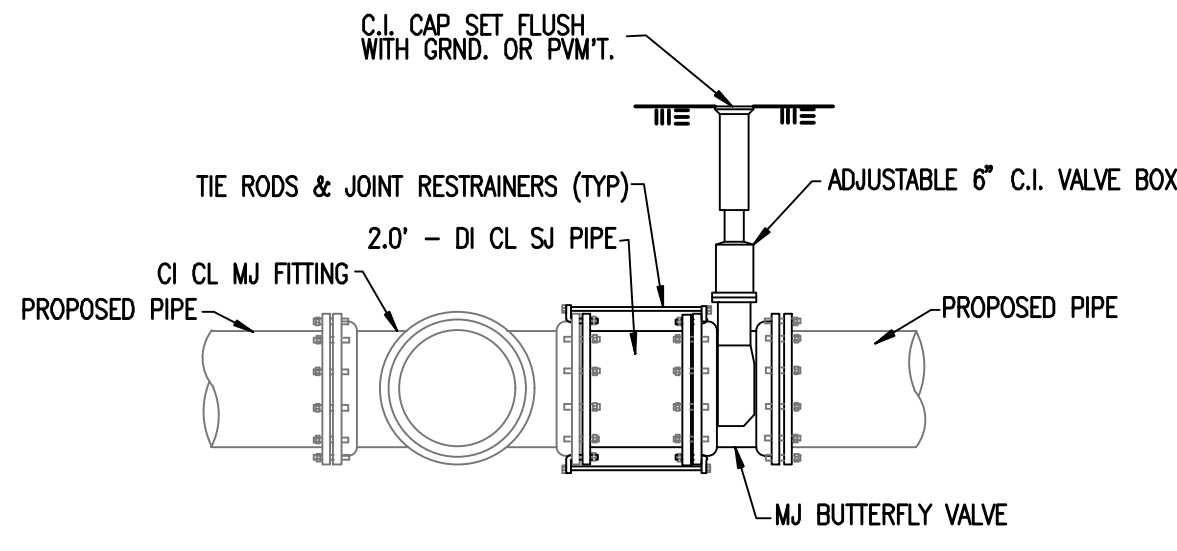


Sheet 08-31-2018 8:04:21 AM by KURTIS DEKAT  
 File Name: 11\_08-31-2018 8:28:50 AM by KURTIS DEKAT  
 C:\Wichita-Civil\2016\160316\003\Wurm Drawings\PD04 MISCELLANEOUS DETAILS1

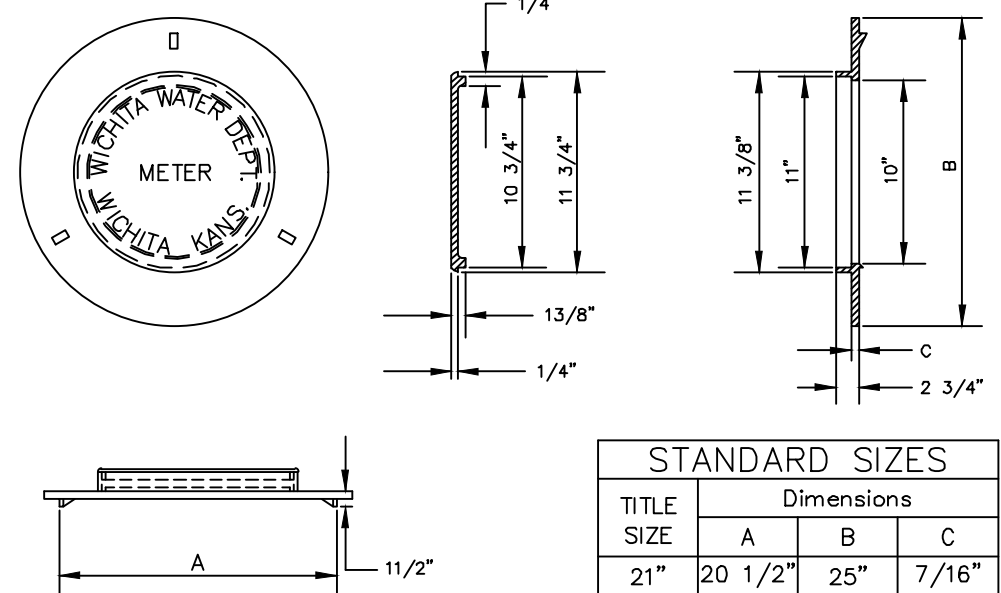


**COMPRESSED AIR PIPELINE  
CONNECTION DETAIL**



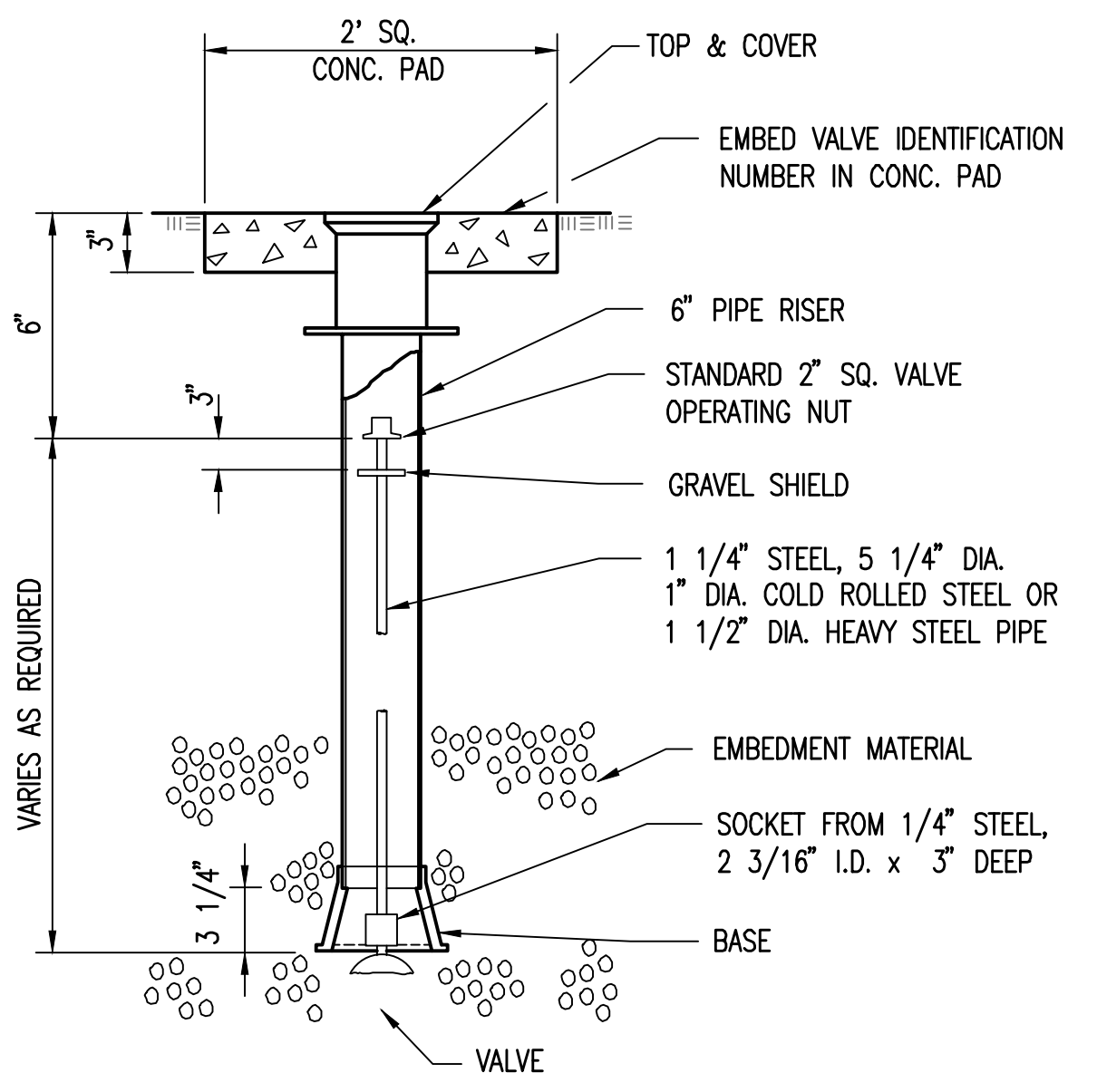
**16" & 24" ANCHORED VALVE ASSEMBLY**

THREADED RODS AND COLLARS SHALL BE HIGH STRENGTH, HEAT TREATED CORTEN STEEL AND SHALL CONFORM TO ASTM A242, TYPE 2, AS MANUFACTURED BY STAR NATIONAL PRODUCTS OR APPROVED EQUAL. THE NUMBER OF TIEBOLT RESTRAINERS AND FASTENING METHOD SHALL BE IN ACCORDANCE WITH THE MANUFACTURERS RECOMMENDATIONS.



Other Approved Ring And Lids: Ford Meter Box Co. Inc.  
 21" Ring & Lid Catalog No. C-4

**RING & LID FOR METER VAULTS**



**VALVE BOX DETAIL**

NOTE: ONE VALVE STEM REQUIRED FOR EACH BURIED VALVE

No.	Revision	By	Date
CITY OF WICHITA			
<b>MISCELLANEOUS DETAILS</b>			
LIME LAGOON OUTFALL			
		PROFESSIONAL ENGINEERING CONSULTANTS, P.A. 303 SOUTH TOPEKA WICHITA, KS 67202 316-262-2891 www.pec1.com	
Designed by VALUE	Job No. 34-160316-003	Sht. PD4 of 19	
Drawn by VALUE	Date JULY 2017		