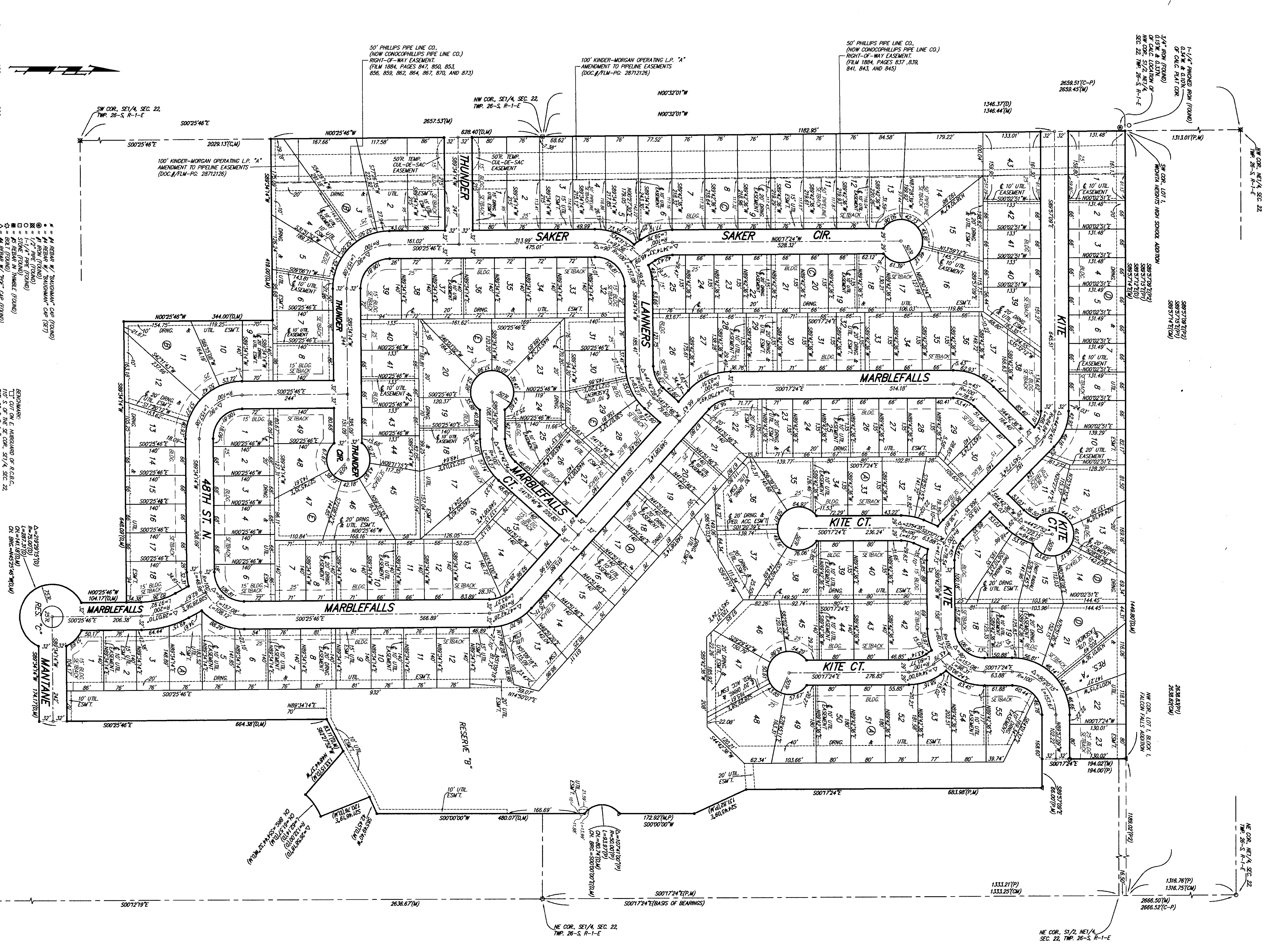


FALCON FALLS 2ND ADDITION WICHITA, SEDGWICK COUNTY, KANSAS



NOTE:
A master grading plan for drainage has been developed for this subdivision and is on file with the City of Wichita, Kansas. All drainage easements identified with the approval of the City Engineer of the City of Wichita, Kansas. No obstructions which impede the flow of this drainage system shall be allowed.

- ALL LOTS WITHIN FALCON FALLS 2ND ADDITION SHALL HAVE A 3 FOOT INTERIOR SETBACK
- (M) = MEASURED
 - (P) = PLATTED
 - (C) = CALCULATED
 - (-P) = CALCULATED PER MEASURED INFO
 - (-C) = CALCULATED PER MEASURED PERG
 - (P) = PLATTED INFO PER FALCON FALLS ADDITION
 - (C) = CALCULATED PER MEASURED PERG
 - (-P) = CALCULATED PER MEASURED PERG
 - (-C) = CALCULATED PER MEASURED PERG

LOT	BLOCK	ELEVATION
1-9	A	1353.0
10-12	A	1353.0
13-18, 26, 37	A	1353.0
46-50	A	1353.0
51-55	A	1353.0
21, 22	D	1353.5

MANUAL BUILDING PAID ELEVATIONS FOR LOWEST DRIVING TO THE STRUCTURES

BENCHMARK:
 T.C. COR. E. HARBORLAND OF R.C.C.C.
 T.M.P. 26-S, R-1-E
 ELEV. = 1359.54 (NOD29)

RES. C
 75' E
 25' S
 50' W
 10' N

RES. B
 10' N
 10' W
 10' S
 10' E

RES. A
 10' N
 10' W
 10' S
 10' E

RES. D
 10' N
 10' W
 10' S
 10' E