

BENCHMARKS:
 BM #1: V-notch cut into sidewalk along east property line at common corner of Lots 1 & 2, Block D, Clifton Cove Addition.
 Elev. = 1259.70 NGVD29

BM #2: Chiseled cross on walk, southwest of intersection of Jade Avenue and Sunflower Drive, Clifton Cove Addition.
 Elev. = 1257.78 NGVD29

CLIFTON COVE ADDITION

Baseline =
 ☉ Jade Ct.

WL Sta. 0+00.00, Begin Line 1
 BL Sta. 0+52.92, 23.00' Lt.
 1-8"x4" CIMJ Reducer
 Remove Existing Cap and Extend Line Northeast, Contractor to Verify Depth and Location of Existing Water Line Prior to Construction.

WL Sta. 0+51.69, Line 1
 BL Sta. 1+00.07, 23.00' Lt.
 1-4" CIMJ 45° Bend

WL Sta 0+75.35, Line 1
 BL Sta. 1+20.07, 39.73' Lt.
 1-4" CIMJ 45° Bend

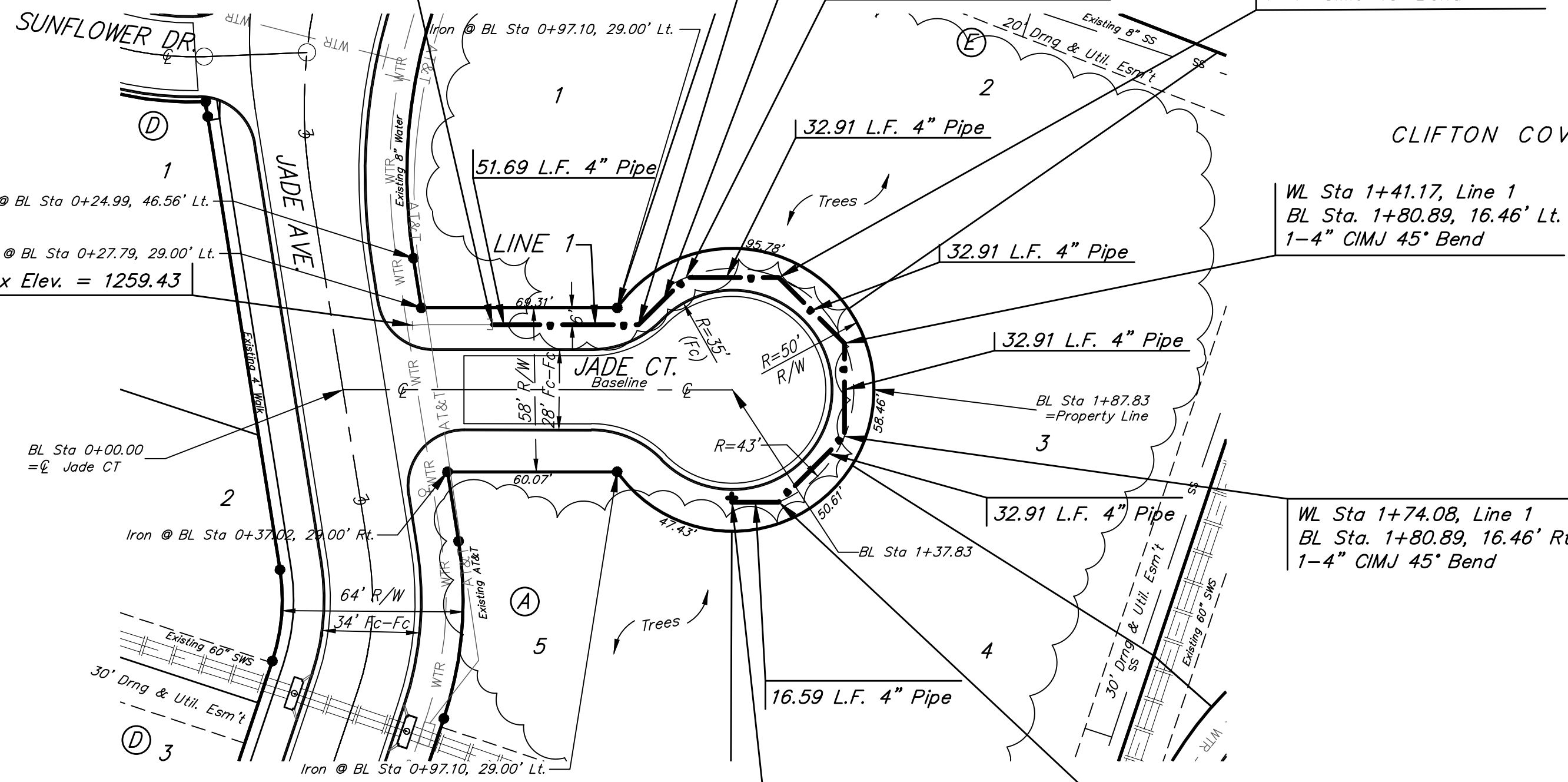
WL Sta 1+08.26, Line 1
 BL Sta. 1+55.70, 39.73' Lt.
 1-4" CIMJ 45° Bend

WL Sta 1+41.17, Line 1
 BL Sta. 1+80.89, 16.46' Lt.
 1-4" CIMJ 45° Bend

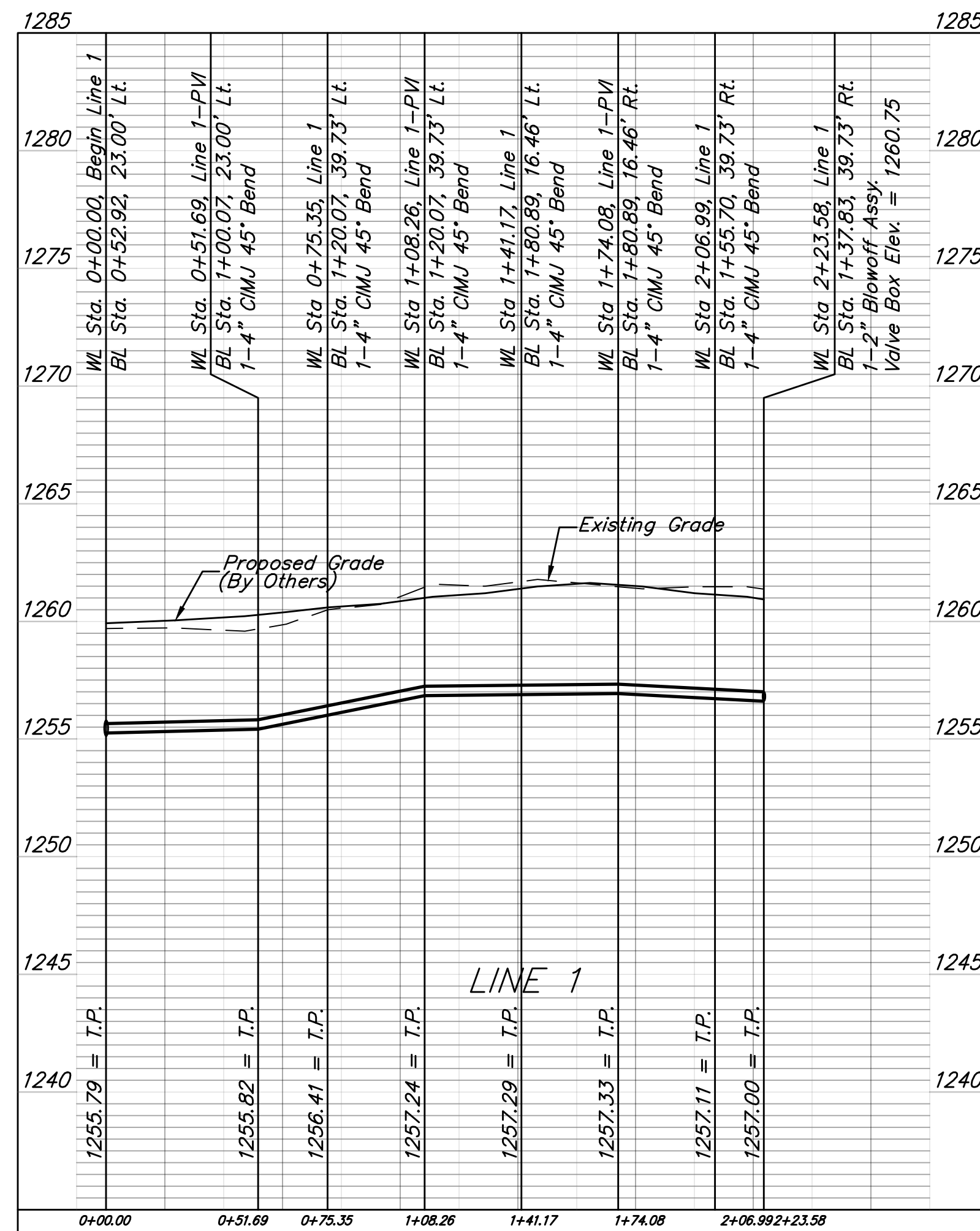
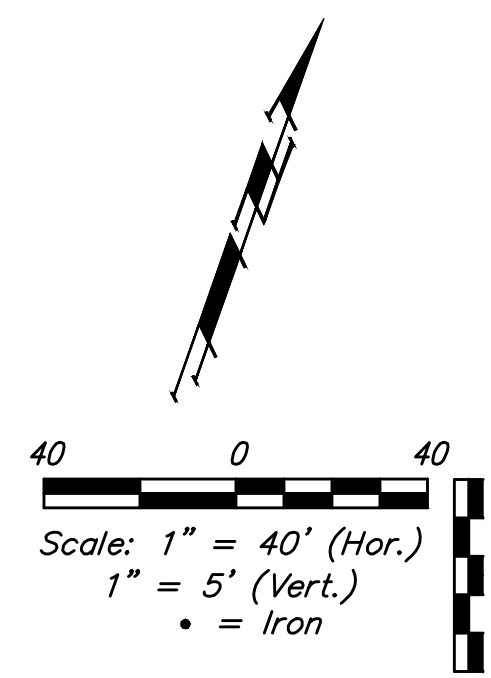
WL Sta 1+74.08, Line 1
 BL Sta. 1+80.89, 16.46' Rt.
 1-4" CIMJ 45° Bend

WL Sta 2+23.58, End Line 1
 BL Sta. 1+37.83, 39.73' Rt.
 1-2" Blowoff Assy.
 Valve Box Elev. = 1260.75

WL Sta 2+06.99, Line 1
 BL Sta. 1+55.70, 39.73' Rt.
 1-4" CIMJ 45° Bend



Existing trees which are in direct conflict with proposed new construction shall be removed or chainsaw trimmed by the Contractor ONLY with Developer's approval. Trees not in direct conflict with proposed new construction shall remain and be protected from damage. Cost to be included in bid item "Site Clearing"



		Clifton Cove Addition Phase II	
		LINE 1	
Baughman Company, P.A. 315 Ellis St. Wichita, KS 67211 P 316-262-7271 F 316-262-0149		DESIGN	DRAWN
ENGINEERING SURVEYING PLANNING LANDSCAPE ARCHITECTURE		AEG	HJW
PROJECT NUMBER 448-90915	APPROVED	DATE	9/11/18
REVISIONS:	SCALE	Noted	
	SHEET	4 OF 12	