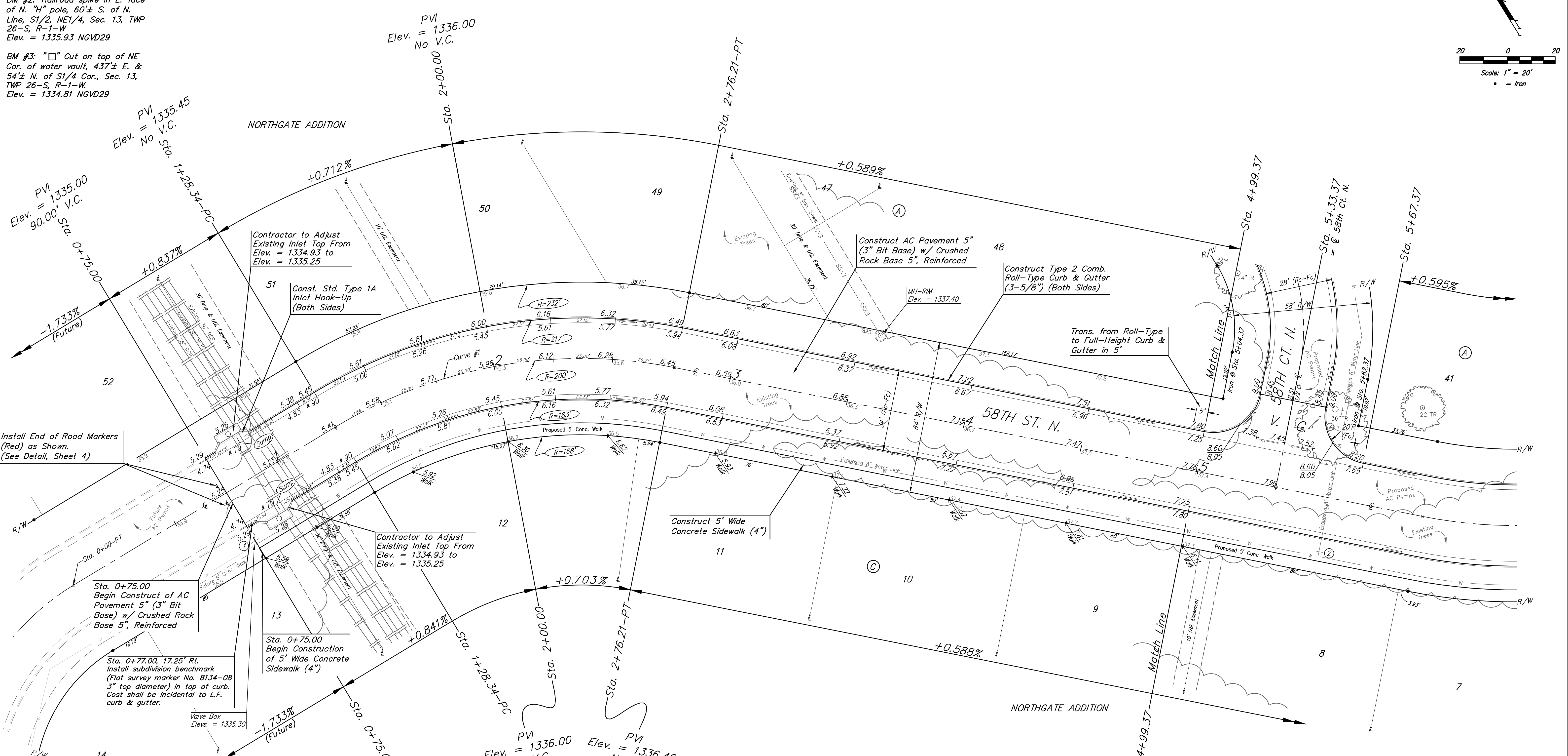
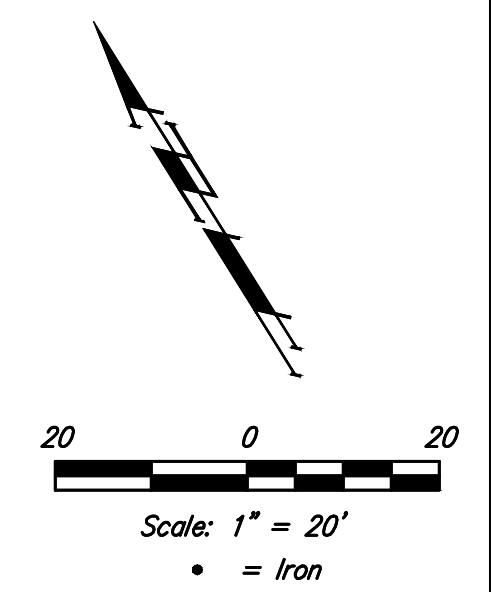


**BENCHMARKS:**  
 BM #1: Bent 60d nail in light pole, 55' SSW of the E1/4 Cor., Sec. 13, TWP 26-S, R-1-W. Elev. = 1336.54 NGVD29

BM #2: Railroad spike in E. face of N. "H" pole, 60'± S. of N. Line, S1/2, NE1/4, Sec. 13, TWP 26-S, R-1-W. Elev. = 1335.93 NGVD29

BM #3: "□" Cut on top of NE Cor. of water vault, 437'± E. & 54'± N. of S1/4 Cor., Sec. 13, TWP 26-S, R-1-W. Elev. = 1334.81 NGVD29



PVI = 1335.00  
 Elev. = 90.00' V.C.  
 Sta. 0+75.00

PVI = 1335.45  
 Elev. = No V.C.  
 Sta. 1+28.34-PC

PVI = 1336.00  
 Elev. = No V.C.  
 Sta. 2+00.00

PVI = 1336.00  
 Elev. = No V.C.  
 Sta. 2+76.21-PT

PVI = 1336.49  
 Elev. = No V.C.  
 Sta. 4+99.37

PVI = 1335.00  
 Elev. = 90.00' V.C.  
 Sta. 0+75.00

Curve #1  
 Curve Data Based on Centerline  
 Rad. = 200' Delta = 42°21'39" Tangent = 77.50'  
 Arc = 147.87' L.C. = 144.52' Def./ft. = 8.59420 Min.

Station	Arc	Face Chord Length		Defl.	Total Defl.
		8' Left	8' Right		
1+28.34	-	-	-	0'00'00"	0'00'00"
1+50.00	21.66'	24.36'	18.94'	3'06'09"	3'06'09"
1+75.00	25.00'	28.11'	21.86'	3'34'51"	6'41'00"
2+00.00	25.00'	28.11'	21.86'	3'34'52"	10'15'52"
2+25.00	25.00'	28.11'	21.86'	3'34'51"	13'50'43"
2+50.00	25.00'	28.11'	21.86'	3'34'51"	17'25'34"
2+75.00	25.00'	28.11'	21.86'	3'34'52"	21'00'26"
2+76.21	1.21'	1.36'	1.06'	0'10'23"	21'10'49"

Existing trees shall be removed by the Contractor only as ABSOLUTELY necessary for construction. Trees not in direct conflict with proposed new construction shall remain and be protected from damage. Cost to be included in bid item "Site Clearing"

Roll type curb & gutter to be constructed on the pavement on this sheet. Top of curb elevation are given for full height curb.

**Baughman** Northgate Addition - Phase 2A  
**58TH ST N**  
 Sta. 0+00 to Sta. 4+99.37

PROJECT NUMBER: 472-84466  
 DESIGN: DMV  
 DRAWN: JAK  
 APPROVED: [Signature]  
 DATE: 8/28/18

REVISIONS:

SCALE: Noted  
 SHEET: **6 OF 22**