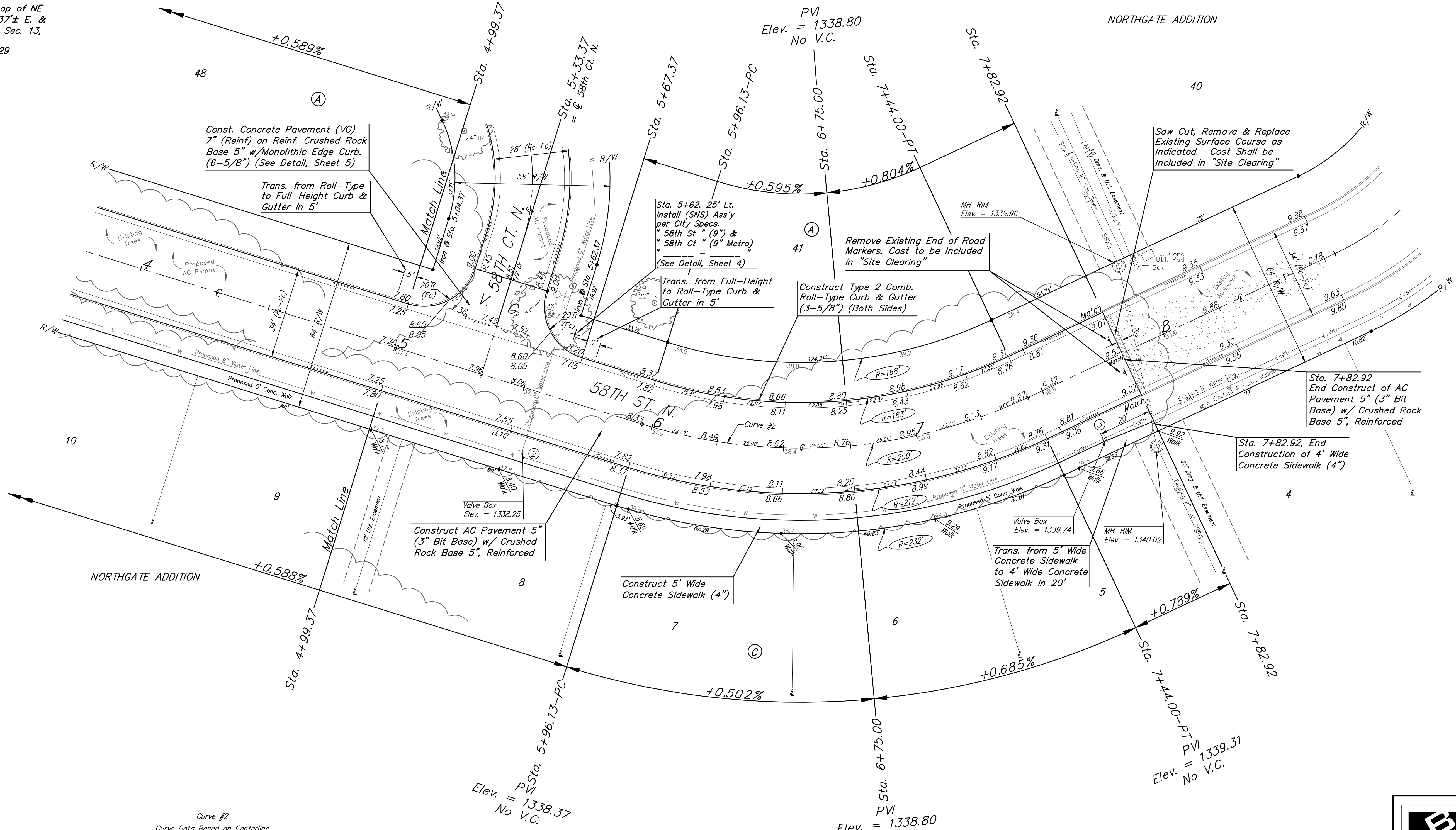
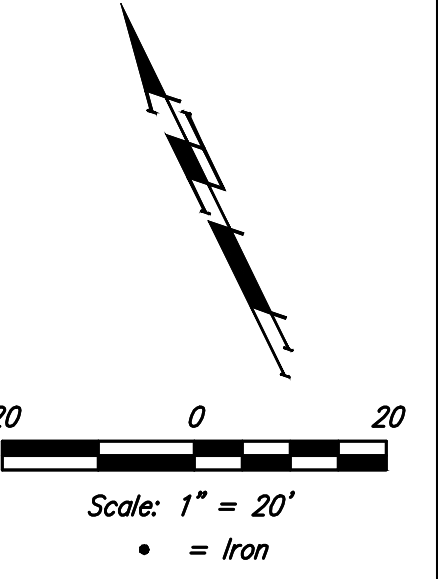


BENCHMARKS:
 BM #1: Bent 60d nail in light pole, 55' SSW of the E1/4 Cor., Sec. 13, TWP 26-S, R-1-W. Elev. = 1336.54 NGVD29

BM #2: Railroad spike in E. face of N. "H" pole, 60± S. of N. Line, S1/2, NE1/4, Sec. 13, TWP 26-S, R-1-W. Elev. = 1335.93 NGVD29

BM #3: "□" Cut on top of NE Cor. of water vault, 437± E. & 54± N. of S1/4 Cor., Sec. 13, TWP 26-S, R-1-W. Elev. = 1334.81 NGVD29



Curve #2
 Curve Data Based on Centerline
 Rad. = 200' Delta = 42°21'39" Tangent = 77.50'
 Arc = 147.87' L.C. = 144.52' Def./Ft. = 8.59420 Min.

Station	Arc	Face Chord Length		Defl.	Total Defl.
		8' Left	8' Right		
5+96.13	-	-	-	0'00"00"	0'00"00"
6+25.00	28.87'	25.24'	32.45'	4'08"07"	4'08"07"
6+50.00	25.00'	21.86'	28.11'	3'34"51"	7'42"58"
6+75.00	25.00'	21.86'	28.11'	3'34"51"	11'17"49"
7+00.00	25.00'	21.86'	28.11'	3'34"52"	14'52"41"
7+25.00	25.00'	21.86'	28.11'	3'34"51"	18'27"32"
7+44.00	19.00'	16.62'	21.37'	2'43"17"	21'10"49"

VALVE LOCATION TABLE

Valve Number	Baseline Station	Offset Distance	Offset Direction
1	0+72.80	25'	Rt.
2	5+56.40	23'	Rt.
3	7+64.00	26'	Rt.

Existing trees shall be removed by the Contractor only as **ABSOLUTELY** necessary for construction. Trees not in direct conflict with proposed new construction shall remain and be protected from damage. Cost to be included in bid item "Site Clearing"

Roll type curb & gutter to be constructed on the pavement on this sheet. Top of curb elevation are given for full height curb.

	Northgate Addition - Phase 2A	
	58TH ST N Sta. 4+99.37 to Sta. 7+82.92	
Baughman Company, P.A. 315 Ellis St. Wichita, KS 67211 P 316-262-7271 F 316-262-0149 ENGINEERING SURVEYING PLANNING LANDSCAPE ARCHITECTURE	PROJECT NUMBER 472-84466	DESIGN: DMV DRAWN: JAK APPROVED: _____ DATE: 8/28/18
REVISIONS:	SCALE: Noted SHEET:	7 OF 22