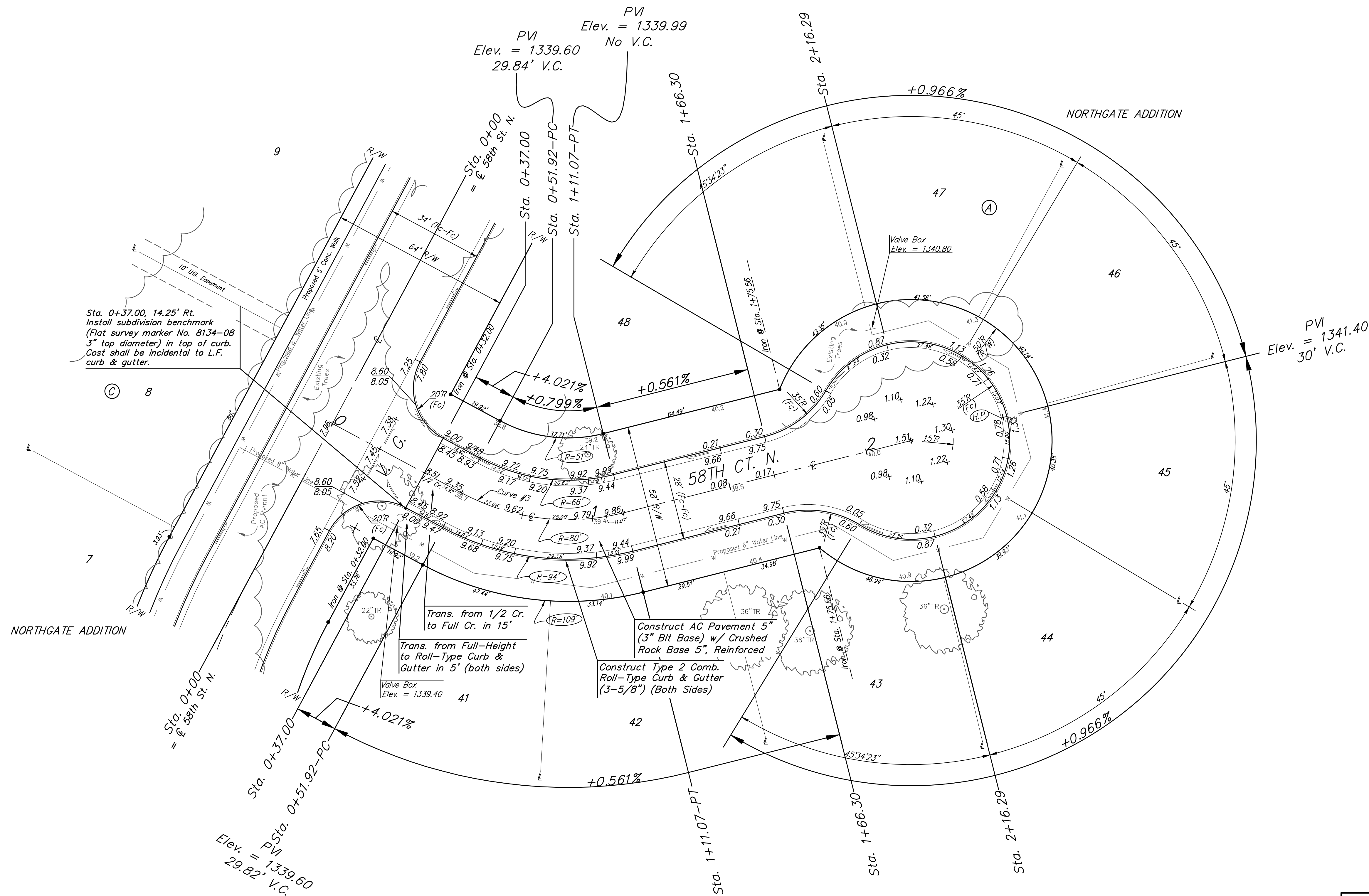
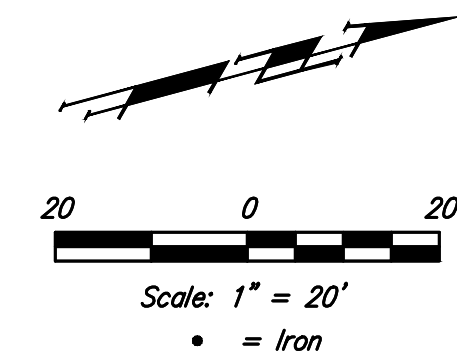


**BENCHMARKS:**  
 BM #1: Bent 60d nail in light pole, 55' SSW of the E1/4 Cor., Sec. 13, TWP 26-S, R-1-W. Elev. = 1336.54 NGVD29

BM #2: Railroad spike in E. face of N. "H" pole, 60'± S. of N. Line, S1/2, NE1/4, Sec. 13, TWP 26-S, R-1-W. Elev. = 1335.93 NGVD29

BM #3: "□" Cut on top of NE Cor. of water vault, 437'± E. & 54'± N. of S1/4 Cor., Sec. 13, TWP 26-S, R-1-W. Elev. = 1334.81 NGVD29



Sta. 0+37.00, 14.25' Rt. Install subdivision benchmark (Flat survey marker No. 8134-08 3" top diameter) in top of curb. Cost shall be incidental to L.F. curb & gutter.

Trans. from 1/2 Cr. to Full Cr. in 15'  
 Trans. from Full-Height to Roll-Type Curb & Gutter in 5' (both sides)

Construct AC Pavement 5" (3" Bit Base) w/ Crushed Rock Base 5", Reinforced  
 Construct Type 2 Comb. Roll-Type Curb & Gutter (3-5/8") (Both Sides)

Curve #3  
 Curve Data Based on Centerline  
 Rad. = 80' Delta = 42°21'39" Tangent = 31.00'  
 Arc = 59.15' L.C. = 57.81' Def./Ft. = 21.49478 Min.

Station	Arc	Face Chord Length		Defl.	Total Defl.
		8' Left	8' Right		
0+51.92	-	-	-	0'00'00"	0'00'00"
0+75.00	23.08'	16.67'	29.32'	8'15'52"	8'15'52"
1+00.00	25.00'	18.05'	31.74'	8'57'07"	17'12'59"
1+11.07	11.07'	8.02'	14.10'	3'57'50"	21'10'49"

Street & Station	Subdivision Bench Marks Location Description	Elevation
58th St N 0+77.00, 17.25' Rt.	Adjacent to Fire Hydrant ~25' NW of the NE Cor., Lot 13, Blk C	
58th Ct N 0+37.00, 14.25' Rt.	Adjacent to Fire Hydrant at North End of the East Return 58th St N & 58th Ct B, SW Cor., Lot 41, Blk A	

Existing trees shall be removed by the Contractor only as ABSOLUTELY necessary for construction. Trees not in direct conflict with proposed new construction shall remain and be protected from damage. Cost to be included in bid item "Site Clearing"

Roll type curb & gutter to be constructed on the pavement on this sheet. Top of curb elevation are given for full height curb.

	Northgate Addition - Phase 2A	
	<b>58TH CT N</b> Lot 41- Lot 48, Block A	
Baughman Company, P.A. 315 Ellis St. Wichita, KS 67211 P 316-262-7271 F 316-262-0149 ENGINEERING   SURVEYING   PLANNING   LANDSCAPE ARCHITECTURE		
PROJECT NUMBER <b>472-84466</b>	DESIGN DMV	DRAWN JAK
REVISIONS:	APPROVED	DATE 8/28/18
		SCALE Noted
		SHEET <b>8 OF 22</b>