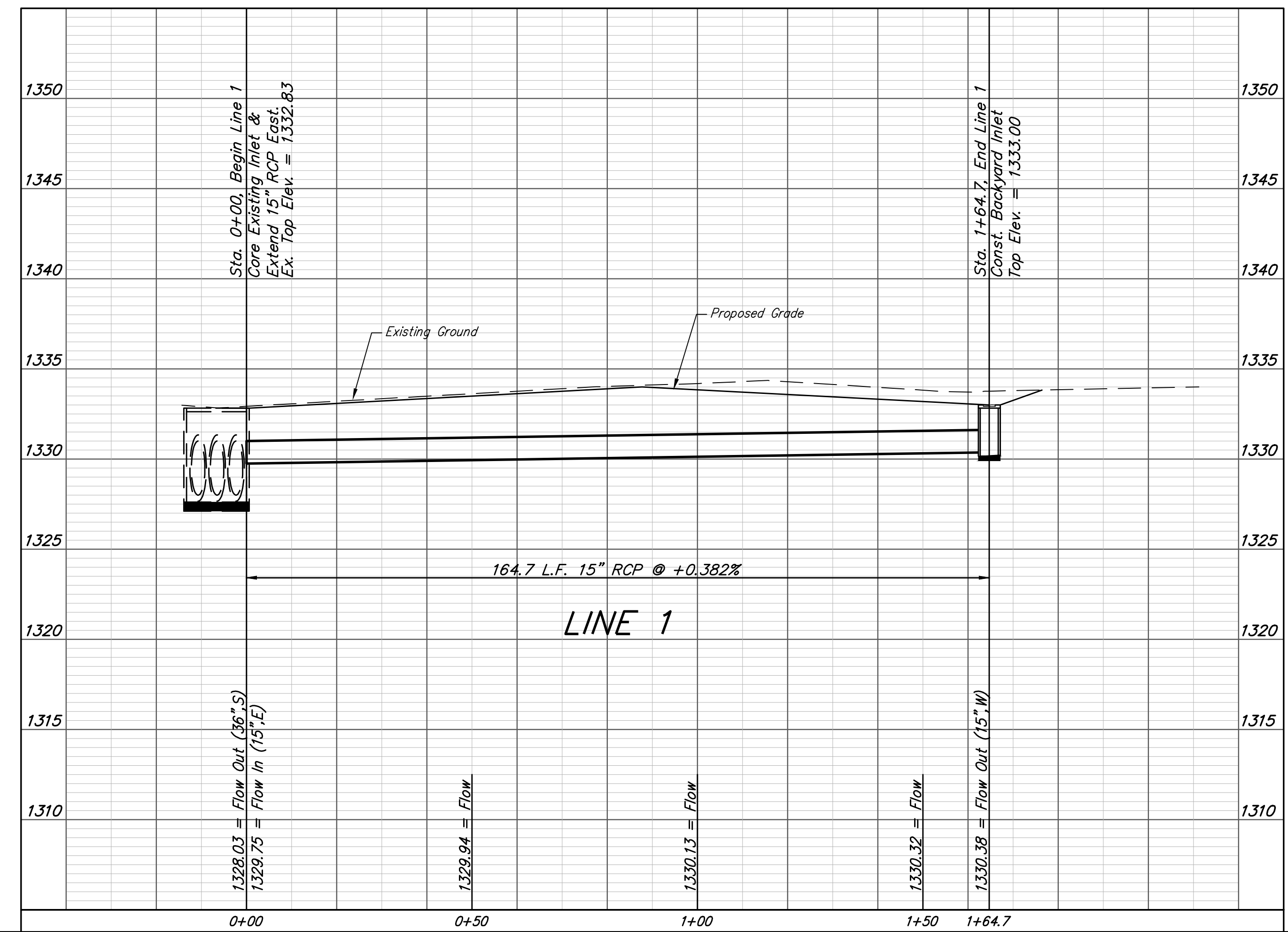
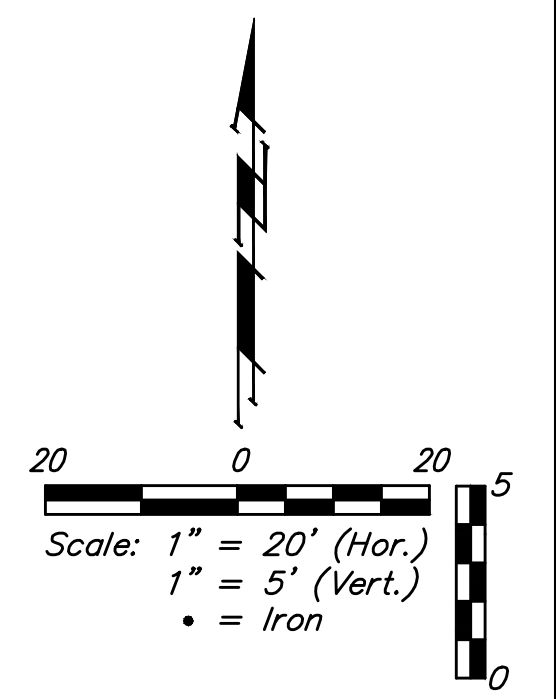
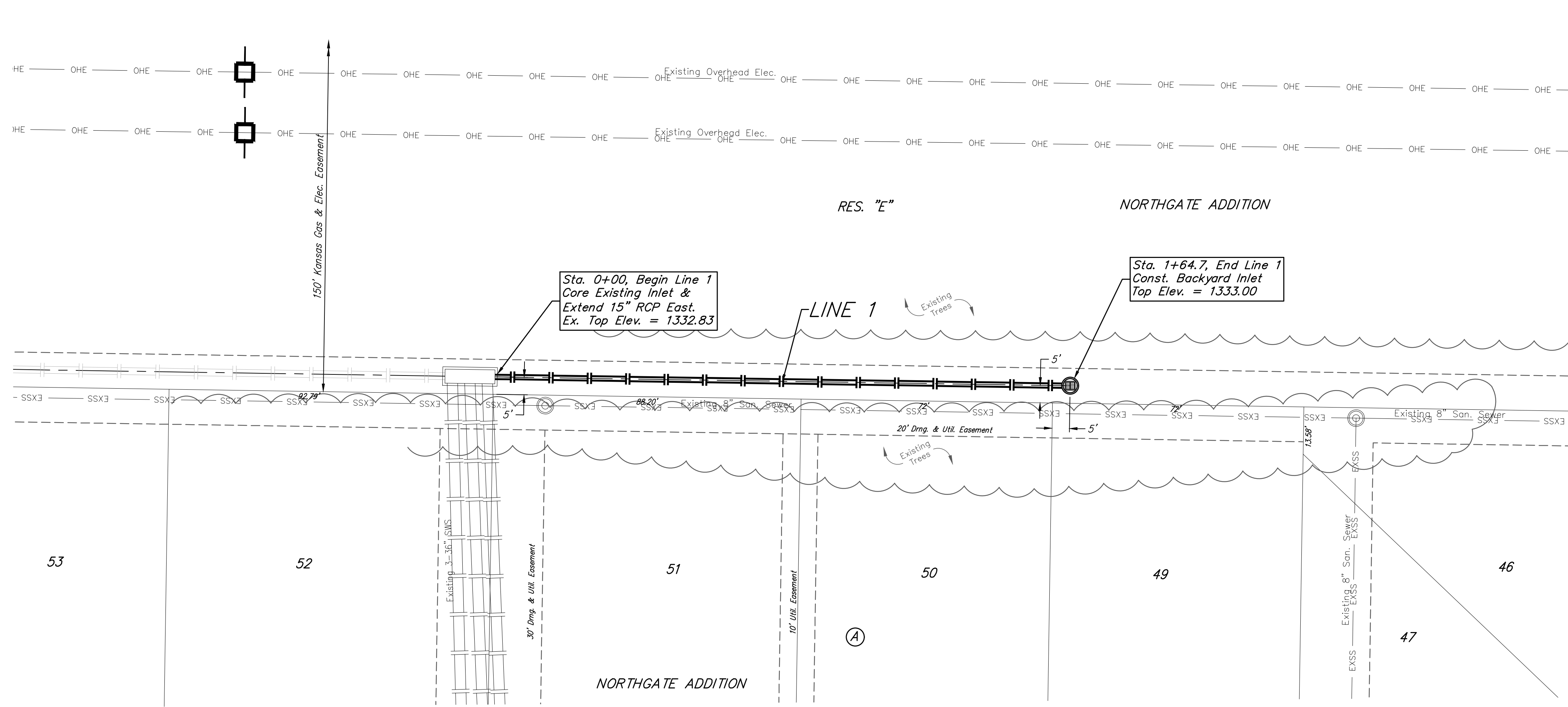


BENCHMARKS:
 BM #1: Bent 60d nail in light pole, 55' SSW of the E1/4 Cor., Sec. 13, TWP 26-S, R-1-W. Elev. = 1336.54 NGVD29
 BM #2: Railroad spike in E. face of N. "H" pole, 60'± S. of N. Line, S1/2, NE1/4, Sec. 13, TWP 26-S, R-1-W. Elev. = 1335.93 NGVD29
 BM #3: "□" Cut on top of NE Cor. of water vault, 437'± E. & 54'± N. of S1/4 Cor., Sec. 13, TWP 26-S, R-1-W. Elev. = 1334.81 NGVD29



Existing trees shall be removed by the Contractor only as ABSOLUTELY necessary for construction. Trees not in direct conflict with proposed new construction shall remain and be protected from damage. Cost to be included in bid item "Site Clearing"

Baughman		Northgate Addition - Phase 2A	
		LINE 1	
		Storm Water Sewer Improvements	
Baughman Company, P.A. 315 Ellis St. Wichita, KS 67211 P 316-262-7271 F 316-262-0149 ENGINEERING SURVEYING PLANNING LANDSCAPE ARCHITECTURE			
PROJECT NUMBER 472-84466	DESIGN DMV	DRAWN JAK	
REVISIONS:	APPROVED	DATE 8/28/18	
	SCALE Noted	SHEET	9 OF 22

C:\Projects\Northgate\Phase 2A\STR 1804E972\SWS PLANS.dwg