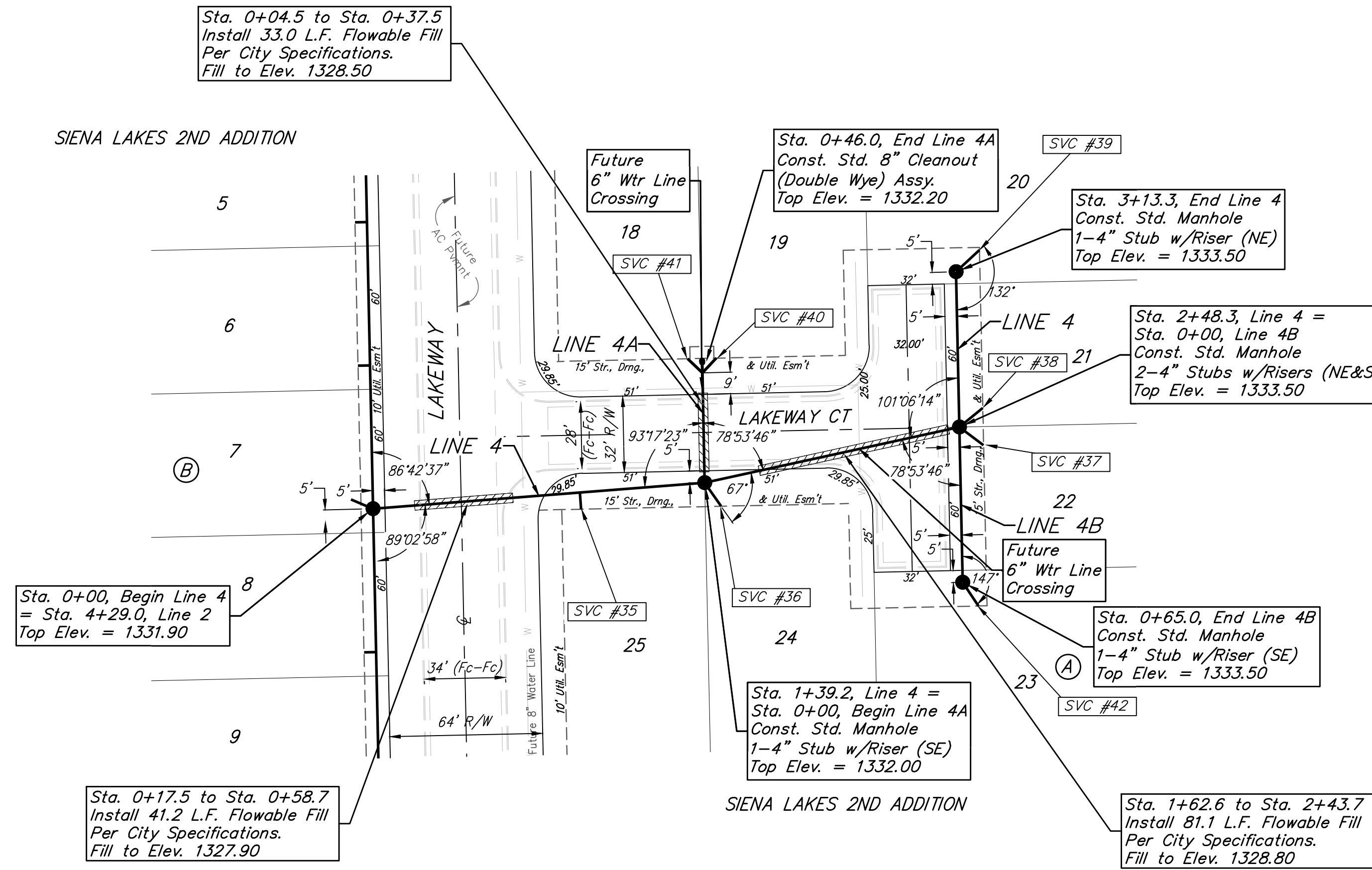


**BENCHMARKS:**  
 Chiseled square at the end of the top of curb at the southeast corner of Ridge Port and 37th ST N.  
 Elev. = 1333.05 NAVD88

Chiseled square on the south side of curb inlet on the east side of Lakeway ST  
 Elev. = 1329.58 NAVD88

SIENA LAKES 2ND ADDITION

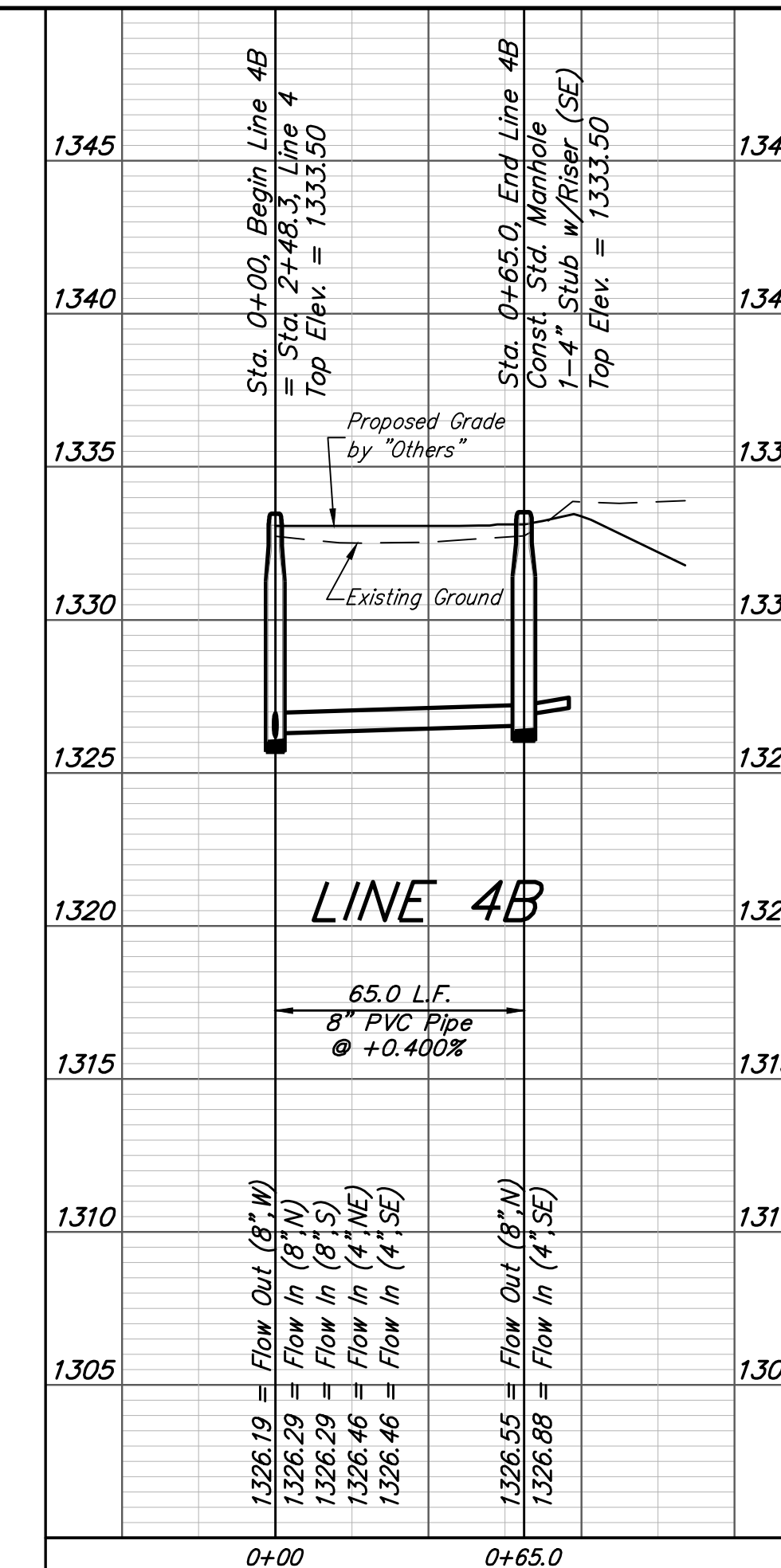
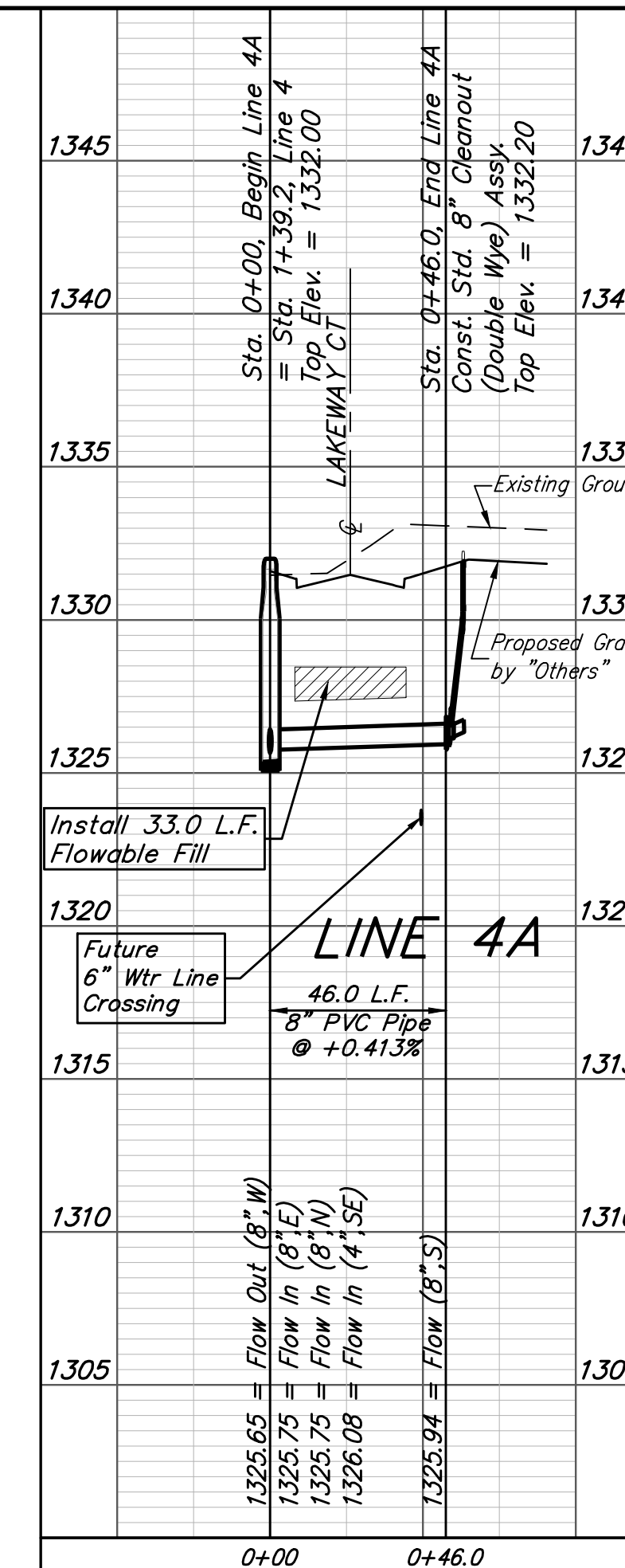
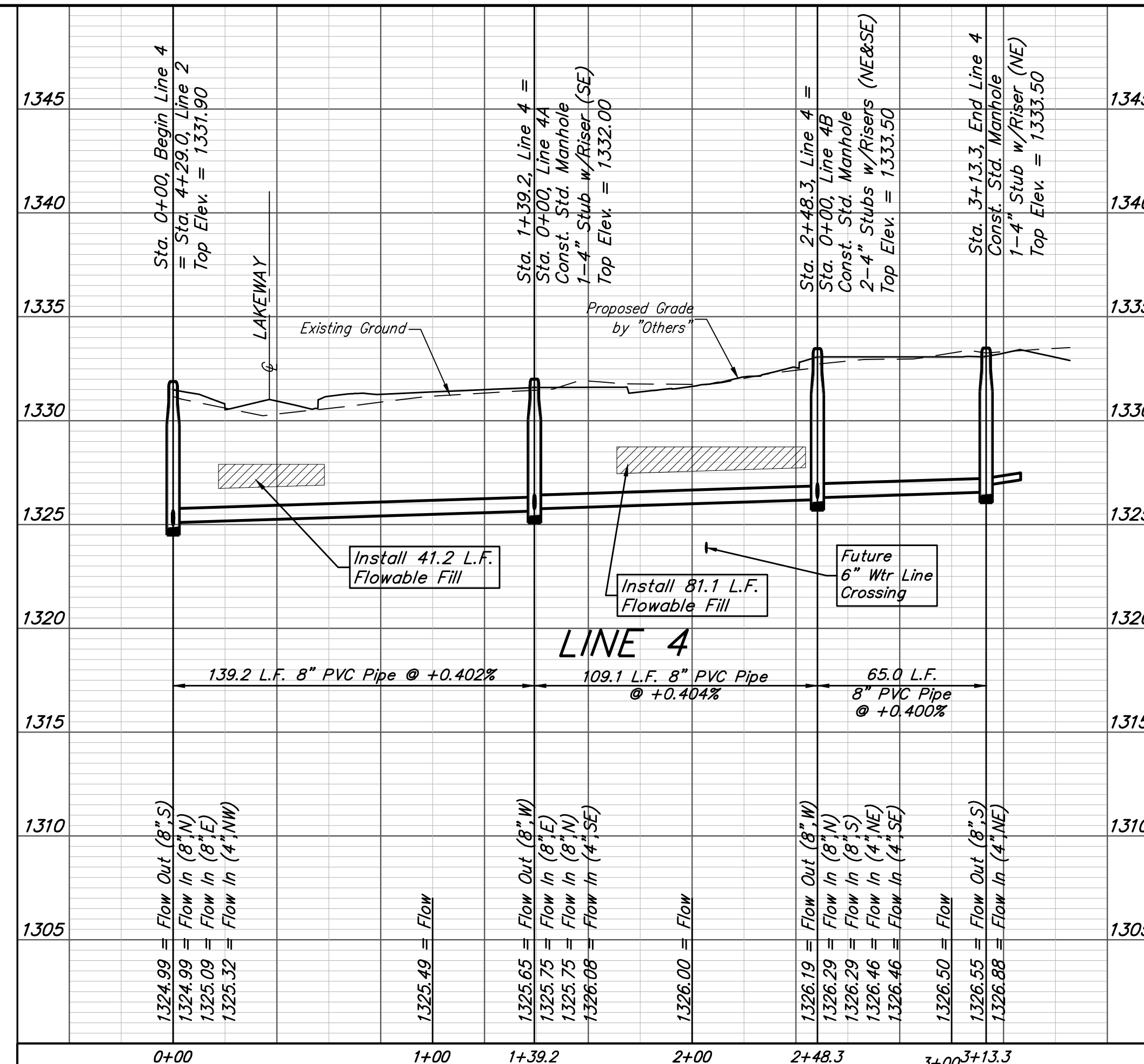


The Contractor shall be required to backfill trench with sand from Sta. 0+58.7, Line 4 to Sta. 3+13.3, Line 4 except where flowable fill is called out and from Sta. 0+00, Line 4B to Sta. 0+65.0, Line 4B. To be bid as "L.F. Sand Backfill Jetted and Vibrated"

SEWER SERVICE TABLE

| NUMBER | TYPE        | LOCATION |           |          |                   | FOR INFORMATION ONLY       |     |
|--------|-------------|----------|-----------|----------|-------------------|----------------------------|-----|
|        |             | LOT NO.  | BLOCK NO. | LINE NO. | STATION/DIRECTION | APPROXIMATE LENGTH 4" PIPE |     |
| 35     | 8" X 4" Tee | 25       | A         | 4        | 0+86.8/Rt.        | 2.2'                       | 7'  |
| 36     | 4" Stub     | 24       | A         | 4        | 1+39.2/Rt.        | 2'                         | 10' |
| 37     | 4" Stub     | 22       | A         | 4        | 2+48.3/Rt.        | 2.9'                       | 10' |
| 38     | 4" Stub     | 21       | A         | 4        | 2+48.3/Rt.        | 2.9'                       | 10' |
| 39     | 4" Stub     | 20       | A         | 4        | 3+13.3/Rt.        | 2.6'                       | 10' |
| 40     | Wye Ext     | 19       | A         | 4A       | 0+46.0/Rt.        | 2'                         | 9'  |
| 41     | Wye Ext     | 18       | A         | 4A       | 0+46.0/Lt.        | 2'                         | 9'  |
| 42     | 4" Stub     | 23       | A         | 4B       | 0+65.0/Lt.        | 2.7'                       | 10' |

NOTE: If the vertical length is greater than zero, the Vertical Riser Pipe shall be extended to 2' minimum above ground water elevation and 4' maximum below proposed ground elevation. 4" Riser Pipes extended from 8" Cleanout Wyes to be bid as "Riser Assembly 4", Vertical"



**Baughman** Siena Lakes 2nd Addition - Phase 1 & 2  
**LINE 4, 4A, & 4B**  
 Sanitary Sewer Improvements

Baughman Company, P.A. 315 Ellis St. Wichita, KS 67211 P 316-262-7271 F 316-262-0149  
 ENGINEERING | SURVEYING | PLANNING | LANDSCAPE ARCHITECTURE

PROJECT NUMBER: 468-85270  
 DESIGN: AEG  
 DRAWN: JAK  
 APPROVED: [Signature]  
 DATE: 9/11/18

REVISIONS:

SCALE: Noted  
 SHEET: **6 OF 18**