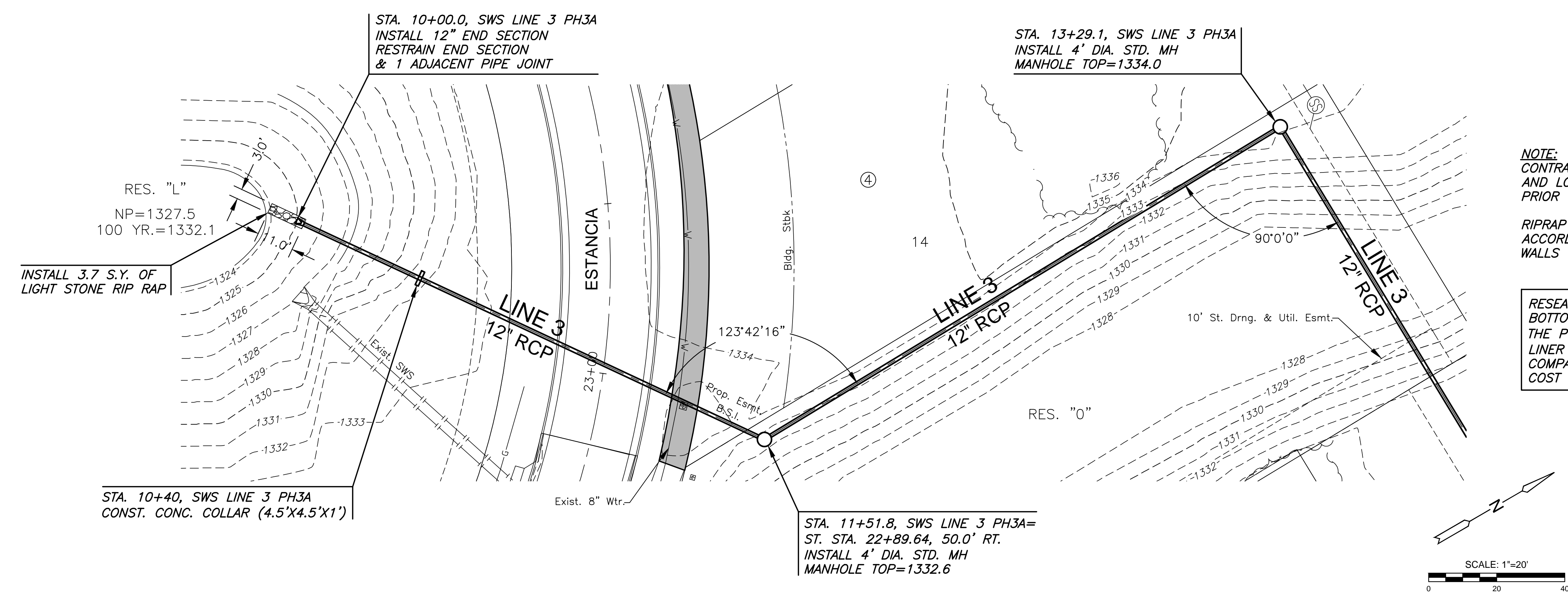


J:\PROJECTS\2018\1401010462 - PREMIER ESTANCIA\DWG\CIVIL\CA\DWG\SWS\RESIDENTIAL\PH3A\1462\_RES\_DP\_03\_PH3A.DWG  
 PLOTTED: Wednesday, September 19, 2018 @ 10:27AM

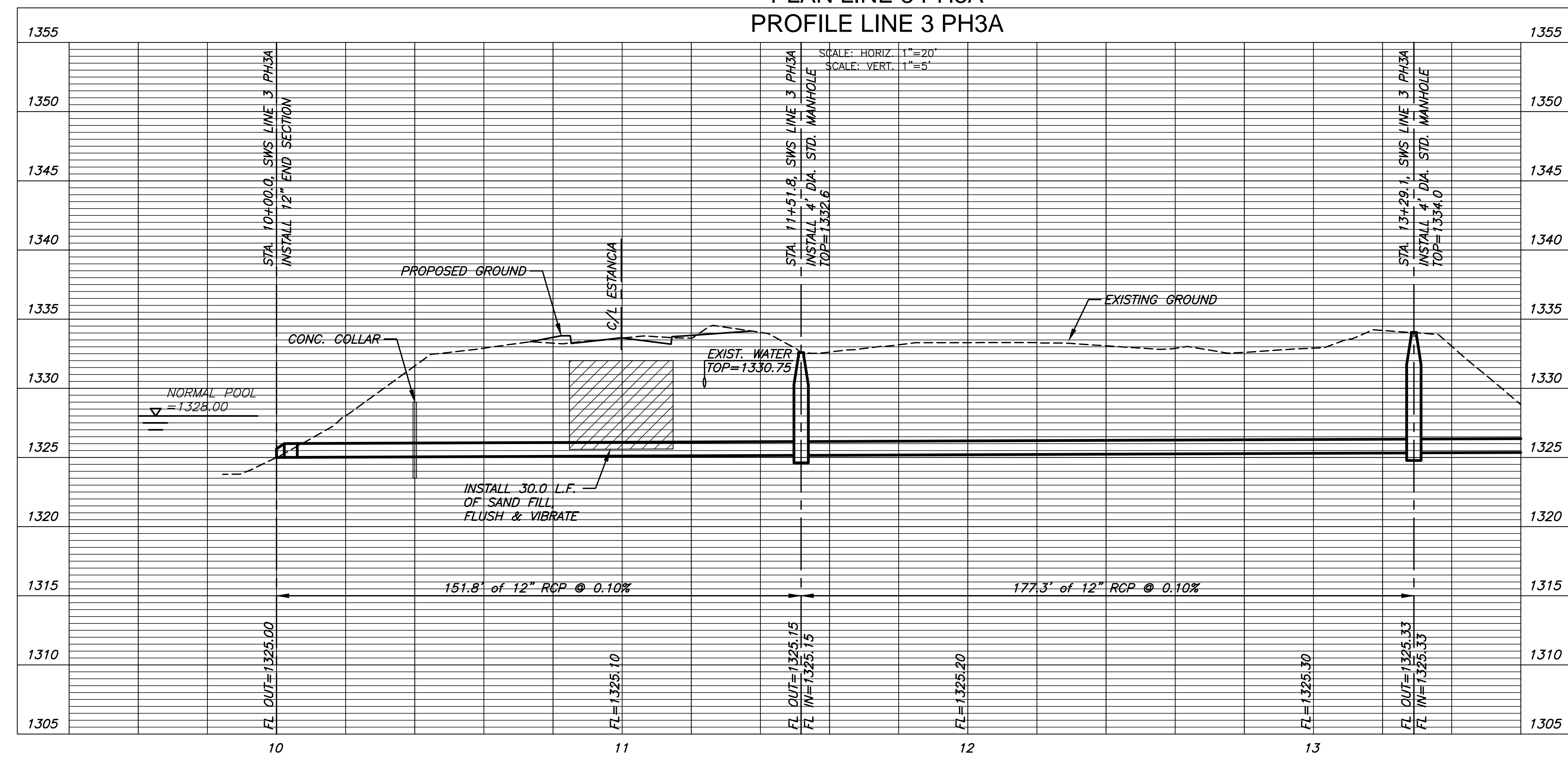


**NOTE:**  
 CONTRACTOR TO VERIFY THE DEPTH  
 AND LOCATION OF EXISTING UTILITIES  
 PRIOR TO CONSTRUCTION.

RIPRAP SHALL BE INSTALLED  
 ACCORDING TO STD SPEC WITH TOE  
 WALLS ON ALL UNPROTECTED EDGES.

RESEAL POND CLAY LINER FROM THE  
 BOTTOM OF THE TRENCH TO TOP OF  
 THE POND. (TYP. FOR LINES 1 & 3)  
 LINER IS TO BE 18" THICK AND  
 COMPACTED TO 95% STANDARD DENSITY.  
 COST SUBSIDIARY TO SWS WORK.

**PLAN LINE 3 PH3A**  
**PROFILE LINE 3 PH3A**



©2018  
 MKEC Engineering  
 All Rights Reserved  
 www.mkec.com  
 These drawings and their contents,  
 including, but not limited to, all concepts,  
 designs, & ideas are the exclusive  
 property of MKEC Engineering (MKEC),  
 and may not be used or reproduced in any  
 way without the express consent of MKEC.

**SWS LINE 3**

PROJECT NO.	468-85074
DATE	SEPT. 2018
SCALE	1" = 20'
DESIGNED	DFL
DRAWN	JWC
CHECKED	GJA

NO.	REVISION	DATE