

PLOT DATE: Wednesday, September 19, 2018 @ 10:46AM

J:\PROJECTS\2017\1401010462 - PREMIER ESTANCIA\DWG\CIVIL\CADD\SWS\RESIDENTIAL\PH3A\1462_RES_DP_04_P13A.DWG



STORM WATER SEWER PLAN FOR

ESTANCIA ADDITION

PHASE 3A

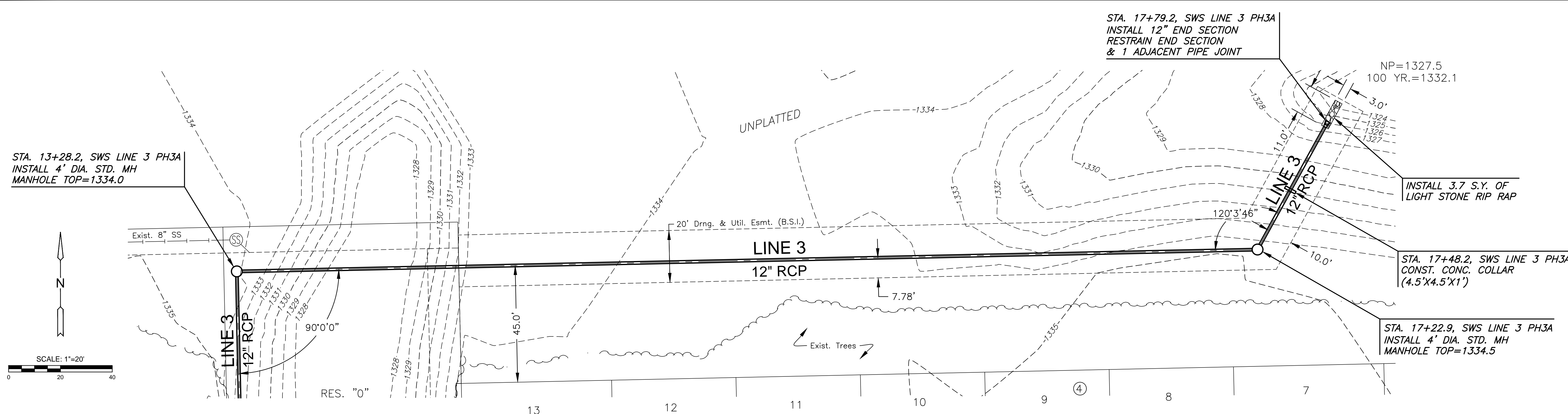
©2018
MKEC Engineering
All Rights Reserved
www.mkec.com
These drawings and their contents, including, but not limited to, all concepts, designs, & ideas are the exclusive property of MKEC Engineering (MKEC), and may not be used or reproduced in any way without the express consent of MKEC.

SWS LINE 3 CONT.

PROJECT NO.	468-85074	
DATE	SEPT. 2018	
SCALE	1" = 20'	
DESIGNED	DRAWN	CHECKED
DFL	JWC	GJA

NO.	REVISION	DATE
-----	----------	------

SHEET NO.



NOTE:
CONTRACTOR TO VERIFY THE DEPTH AND LOCATION
OF EXISTING UTILITIES PRIOR TO CONSTRUCTION.

RIPRAP SHALL BE INSTALLED ACCORDING TO STD
SPEC WITH TOE WALLS ON ALL UNPROTECTED EDGES.

RESEAL POND CLAY LINER FROM THE BOTTOM OF THE
TRENCH TO TOP OF THE POND. (TYP. FOR LINES 1 &
3) LINER IS TO BE 18" THICK AND COMPACTED TO 95%
STANDARD DENSITY. COST SUBSIDIARY TO SWS WORK.

PLAN LINE 3 PH3A (CONT.) PROFILE LINE 3 PH3A (CONT.)

