

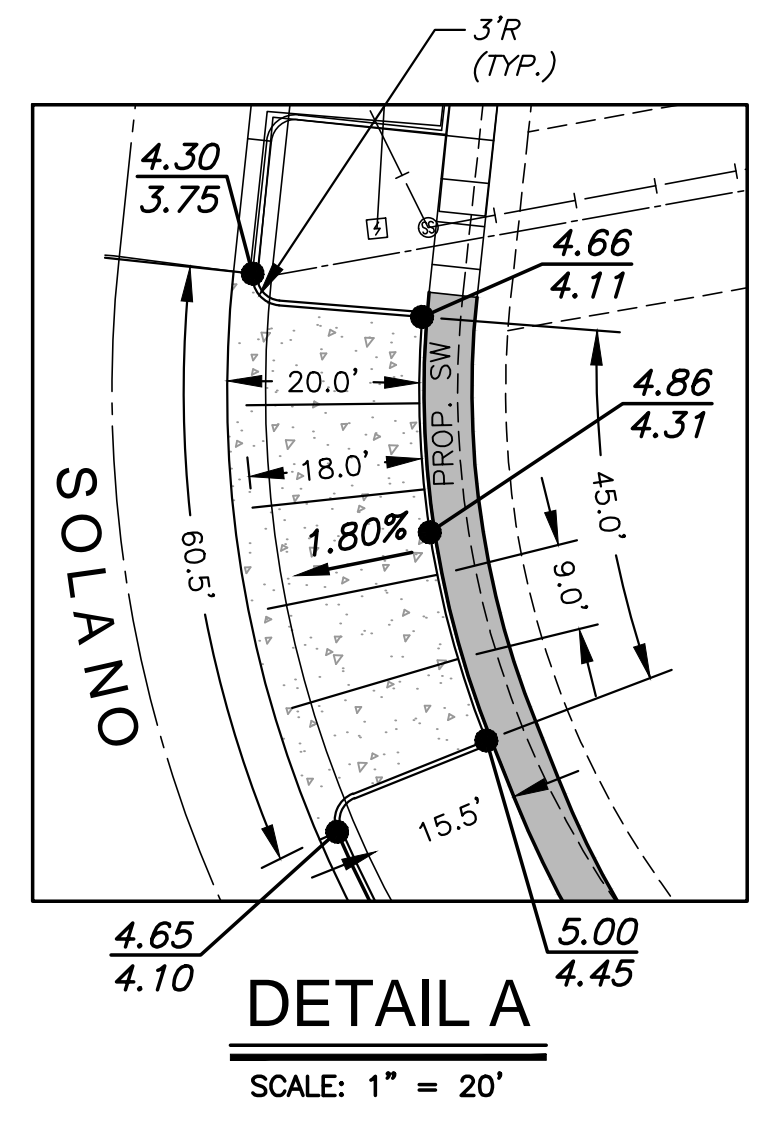
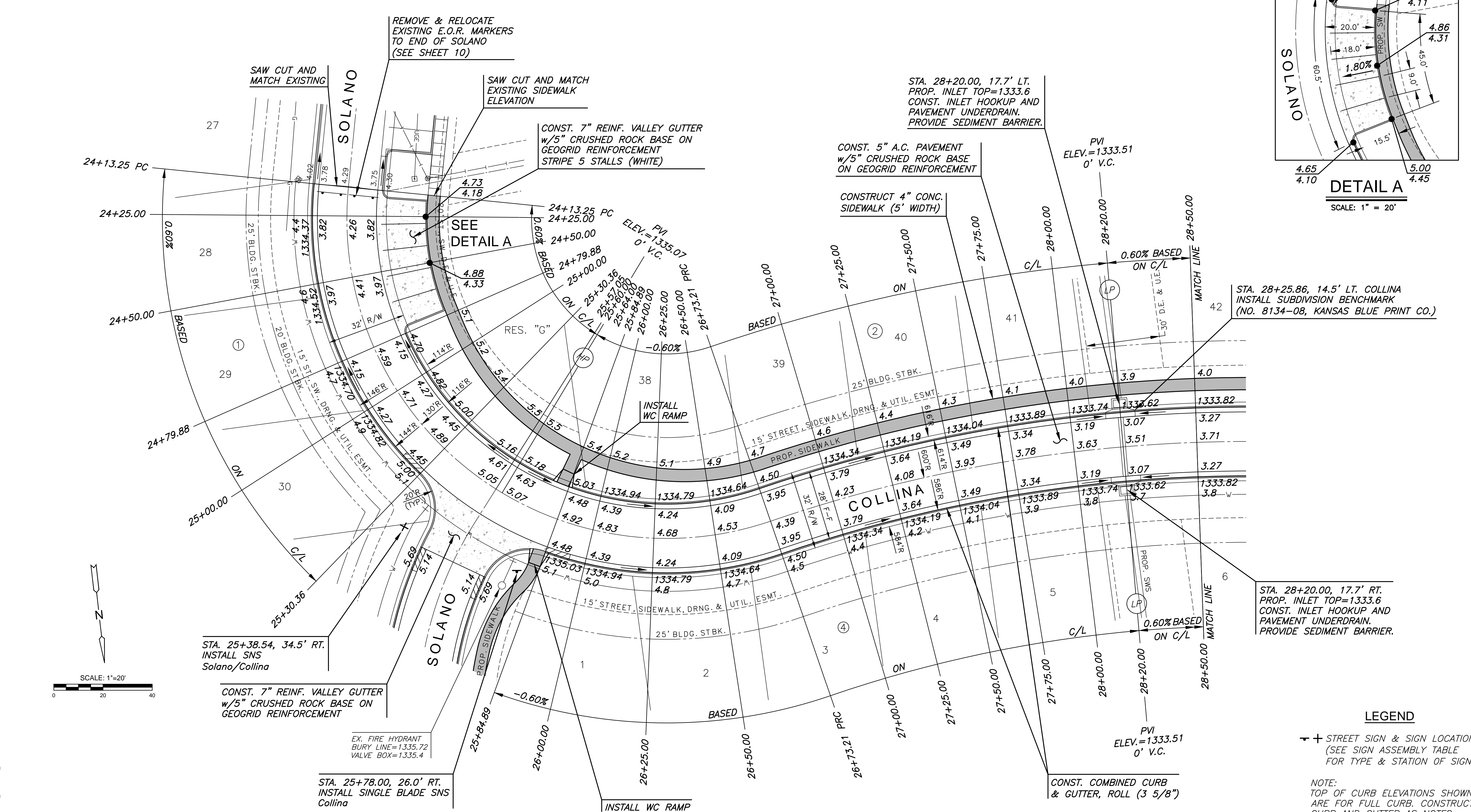
PAVING & INCIDENTAL DRAINAGE FOR  
**ESTANCIA ADDITION**  
PHASE 3A

©2018  
MKEC Engineering  
All Rights Reserved  
www.mkec.com  
These drawings and their contents, including, but not limited to, all concepts, designs, & ideas are the exclusive property of MKEC Engineering (MKEC), and may not be used or reproduced in any way without the express consent of MKEC.

<b>COLLINA</b>	
PROJECT NO.	472-85245
DATE	SEPT. 2018
SCALE	1" = 20'
DESIGNED	DRAWN
DFL	JWC
CHECKED	GJA
NO.	REVISION
SHEET NO.	
08 OF 32	

SUBDIVISION BENCH MARKS			
NO.	STREET AND STATION	FROM CL	DESCRIPTION
1	COLLINA, STA. 28+25.86	14.5' LT	TOP OF CURB AT W END OF INLET HOOKUP

NOTE: CONTRACTOR SHALL INSTALL SUBDIVISION BENCH MARKS ("FLAT SURVEY MARKERS NO. 8134-08 3" TOP DIAMETER" PROVIDED BY KANSAS BLUE PRINT CO., INC.) COSTS TO BE CONSIDERED SUBSIDIARY TO CONSTRUCTION OF COMBINED CURB AND GUTTER.



STA. 28+25.86, 14.5' LT. COLLINA  
INSTALL SUBDIVISION BENCHMARK  
(NO. 8134-08, KANSAS BLUE PRINT CO.)

STA. 28+20.00, 17.7' RT.  
PROP. INLET TOP=1333.6  
CONST. INLET HOOKUP AND  
PAVEMENT UNDERDRAIN.  
PROVIDE SEDIMENT BARRIER.

**LEGEND**

✦ + STREET SIGN & SIGN LOCATION  
(SEE SIGN ASSEMBLY TABLE  
FOR TYPE & STATION OF SIGN)

NOTE:  
TOP OF CURB ELEVATIONS SHOWN  
ARE FOR FULL CURB. CONSTRUCT  
CURB AND GUTTER AS NOTED.

 10' TRANSITION FROM  
FULL TO ROLL CURB

J:\PROJECTS\2018\1401010462 - PREMIER ESTANCIA\DWG\PAVING\RESIDENTIAL\PH3\1462-EP-01-PA3A.DWG PLOTTED: Wednesday, September 19, 2018 10:57AM