

©2018  
MKEC Engineering  
All Rights Reserved  
www.mkec.com  
These drawings and their contents, including, but not limited to, all concepts, designs, & ideas are the exclusive property of MKEC Engineering (MKEC), and may not be used or reproduced in any way without the express consent of MKEC.

**COLLINA (CONT.)**

PROJECT NO. 472-85245

DATE SEPT. 2018

SCALE 1" = 20'

DESIGNED DRAWN CHECKED  
DFL JWC GJA

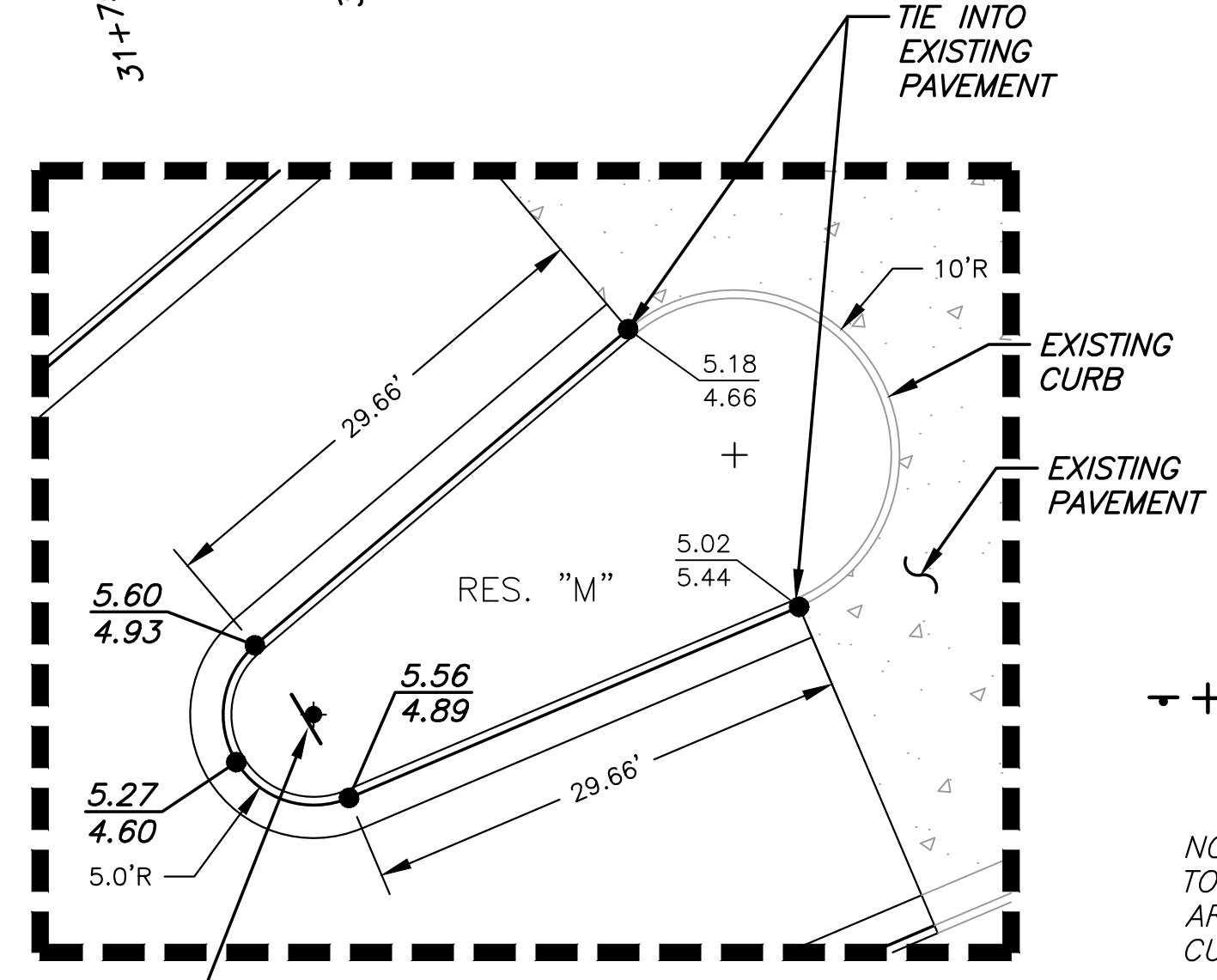
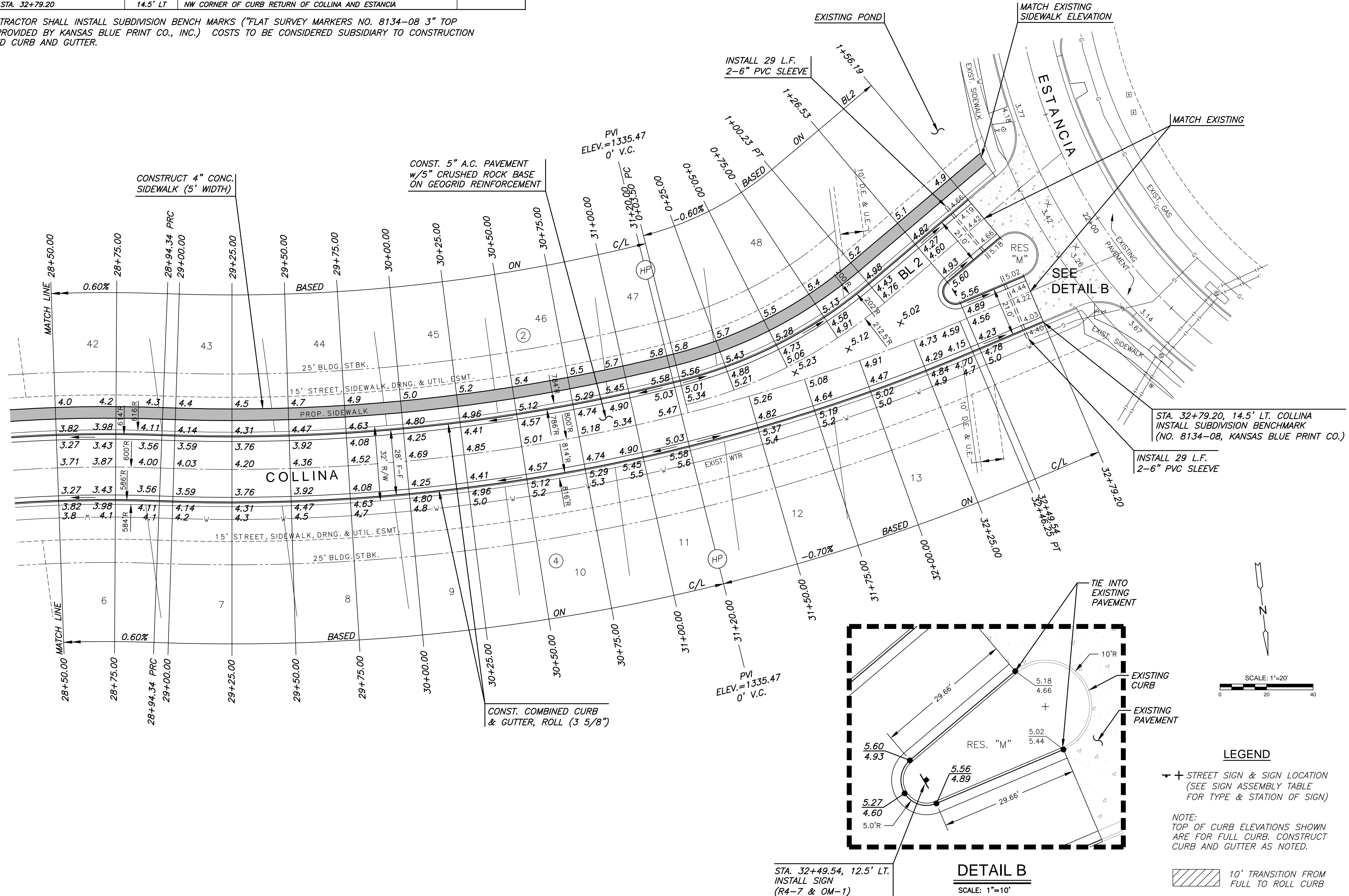
NO. REVISION DATE

SHEET NO.

**SUBDIVISION BENCH MARKS**

NO.	STREET AND STATION	FROM CL	DESCRIPTION	ELEVATIONS
1	COLLINA, STA. 32+79.20	14.5' LT	NW CORNER OF CURB RETURN OF COLLINA AND ESTANCIA	

NOTE: CONTRACTOR SHALL INSTALL SUBDIVISION BENCH MARKS ("FLAT SURVEY MARKERS NO. 8134-08 3" TOP DIAMETER" PROVIDED BY KANSAS BLUE PRINT CO., INC.) COSTS TO BE CONSIDERED SUBSIDIARY TO CONSTRUCTION OF COMBINED CURB AND GUTTER.



**LEGEND**

✦ + STREET SIGN & SIGN LOCATION  
(SEE SIGN ASSEMBLY TABLE FOR TYPE & STATION OF SIGN)

NOTE:  
TOP OF CURB ELEVATIONS SHOWN ARE FOR FULL CURB. CONSTRUCT CURB AND GUTTER AS NOTED.

 10' TRANSITION FROM FULL TO ROLL CURB

J:\PROJECTS\2018\1401010462 - PREMIER ESTANCIA\DWG\CIVIL\CADD\PAV\RESIDENTIAL\PH3\14462-EP-02-PH3A.DWG PLOTTED: Wednesday, September 19, 2018 @ 10:35AM