

**GENERAL NOTES:**

- The Contractor shall comply with all applicable safety regulations. All construction shall be completed following current City Standard Specifications and Special Provisions.
- Contractor will be required to provide notice to utility companies a minimum of seventy-two (72) hours prior to any excavation, as follows:

Kansas One-Call 687-2470

The Contractor must notify the following in case of an emergency:

AT&T	1-800-246-8464
Black Hills Energy	1-800-694-8989
Butler Rural Electric	1-316-321-9600
City of Wichita Water & Sewer Dept.	1-316-219-8921
City of Wichita Stormwater	1-316-268-4090
City of Wichita Traffic	1-316-268-4034
Cox Communications	1-888-249-3530
Kansas Gas Service	1-888-482-4950
Westar Energy	1-800-544-4857

- Utility service lines, poles, etc. are to be adjusted as necessary by others prior to construction unless the plans specifically call for their adjustment by the Contractor or unless the plans specifically identify a utility to be adjusted by its owner during construction. Existing utilities and their location, as shown on the plans, represent the best information obtainable for design. The Contractor will be required to work around existing utilities within the right-of-way which do not conflict with proposed construction.

- Rubble from the removal of miscellaneous structures and excess excavation which is to be wasted shall be disposed of on sites to be provided by the Contractor. These sites shall be approved by the Engineer as to suitability, appearance and site location. Locations, in the opinion of the Engineer, that will leave an unsightly appearance will not be approved. All disposal sites must be approved by the Kansas Department of Health and Environment. Material either stockpiled or disposed of in a flood plain will require a Kansas State Board of Agriculture permit. Any material dumped in waters of the United States or wetlands is subject to U.S. Corps. of Engineers permitting regulations. Any material buried or stockpiled beyond approved construction limits will require additional archaeological investigations unless buried in a previously approved borrow location.

- Trees and shrubs in public right-of-way which are in direct conflict with proposed new construction shall be removed by the Contractor with the Engineer's approval. Trees and shrubs which are not in direct conflict with proposed new construction shall be saved and protected from damage.

- The Contractor shall give all property owners and/or tenants of developed property abutting the construction of this project a minimum of ten (10) days notice prior to start of construction.

- The Contractor shall be responsible for preserving property irons. The Contractor will be required to re-establish any property irons which are damaged or destroyed by his construction operations. Such irons shall be re-established by a licensed land surveyor in accordance with state laws.

- If traffic will be impacted by construction, a traffic control plan must be submitted and approved by the City Traffic Engineer, Brian Coon at [traffic@wichita.gov](mailto:traffic@wichita.gov) before construction can begin. The Contractor shall be responsible for all traffic control measures to facilitate construction. All construction zone markings and signage shall conform to the latest version of the Manual on Uniform Traffic Control Devices (MUTCD) as published by the US Dept. of Transportation, Federal Highway Administration. All costs associated with construction markings and signage shall be the Contractors responsibly.

- All elevations shown are NAVD 88.

- All areas disturbed during construction that will not be under proposed pavement shall be restored to match existing conditions.

- The Contractor shall protect from damage and support existing utilities through constructions as approved by the utility owner and the Engineer at the contractors expense.

- Contractor shall limit the extent of trench openings overnight and weekends to less than 50 feet.

- Any sidewalk, drive approach, curb, or street pavement removed to construct project must have a pavement cut permit and be replaced by the City contractor. Permits can be obtained by calling 316-268-4501 or 316-268-4480.

- No shrink or swell factors have been applied to the earthwork quantities shown on this project. All earthwork quantities are based on raw surface volume comparisons.

- Excess dirt generated from installation of underground utilities following grading activities is to remain on site and be stockpiled on Lots 33 & 34, Block 8 or at a location approved by the engineer. Excess dirt generated from construction of sanitary sewer will be placed on Lots 1 & 9, Block 4 for the contractors use.

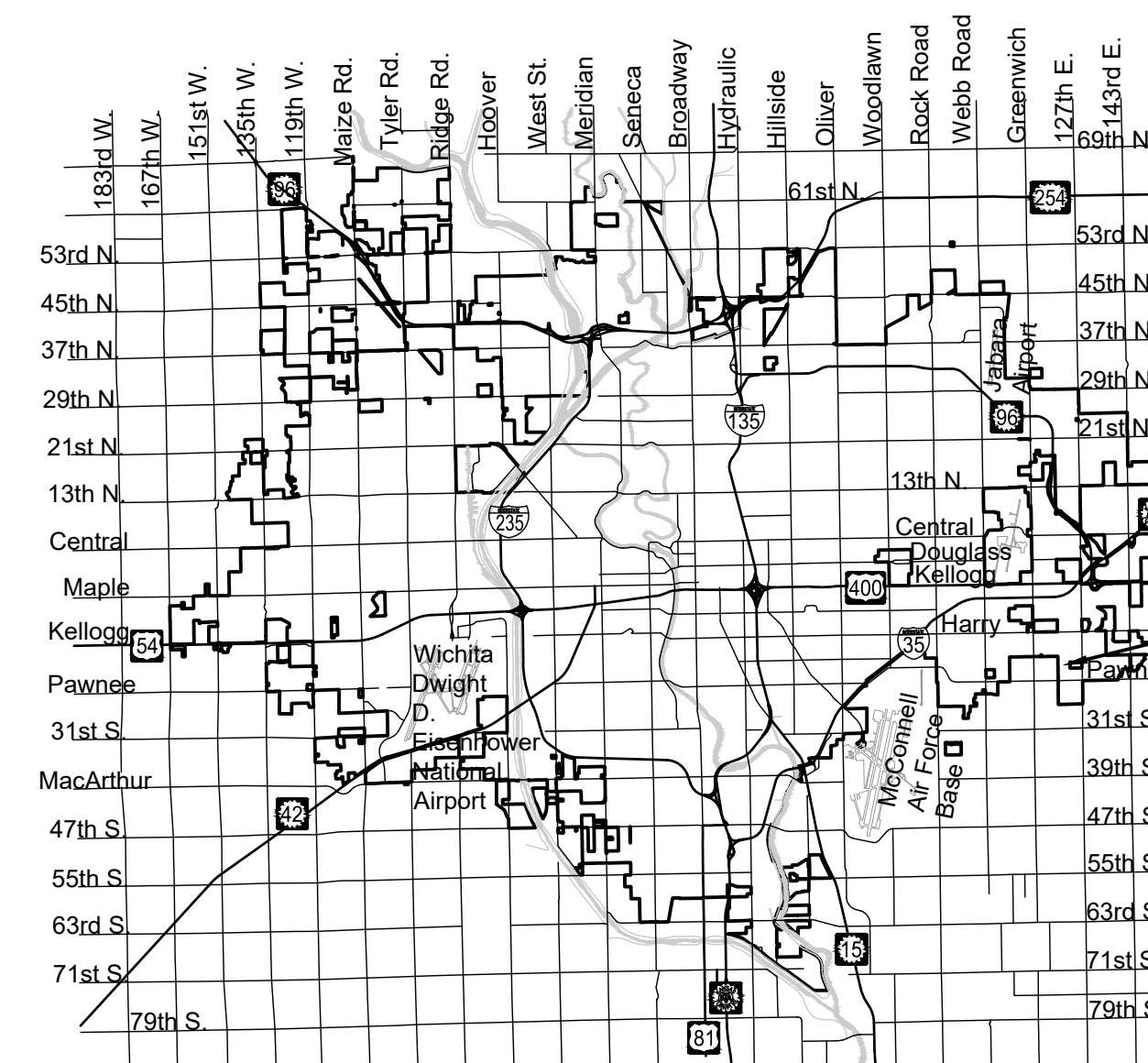
**Benchmarks**

**BENCHMARK #1**  
CHISELED SQUARE ON THE TOP OF CURB ON N. SIDE OF CHERRY CREEK 210'± E. OF THE INTERSECTION OF MICHELLE & CHERRY CREEK, EAST SIDE OF INLET.  
ELEVATION = 1339.26 (NAVD88)

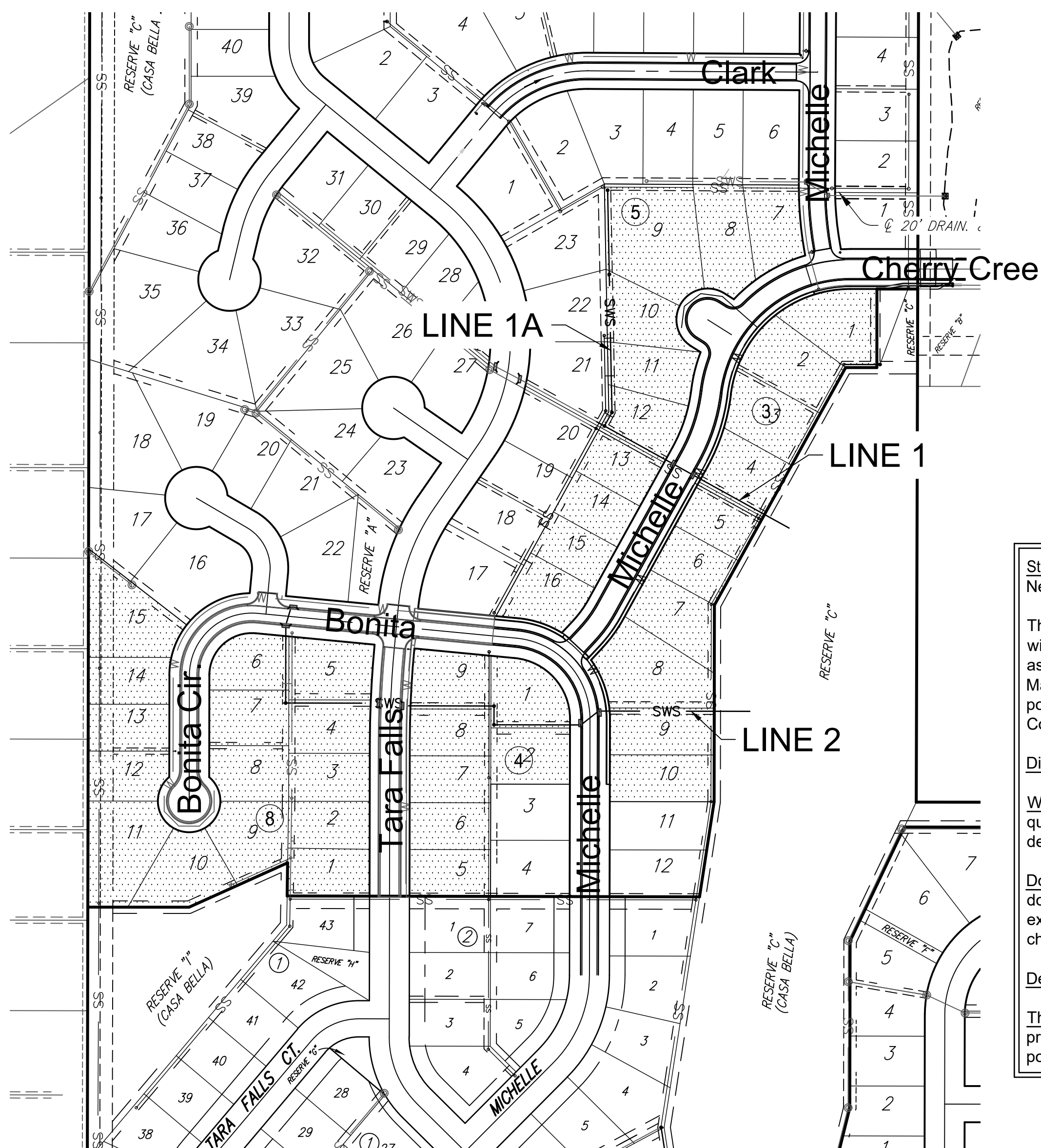
**BENCHMARK #2**  
RB BRASS DISC, EAST SIDE OF 127TH & MT. VERNON 55.45' E. & 5.13' S. OF THE NW COR. OF THE SW 1/4 OF SEC. 35, T27S, R2E.  
ELEVATION = 1348.80 (NAVD88)

# STORM WATER DRAIN 439 to serve Casa Bella 2nd - Phase 5 CITY OF WICHITA, KANSAS

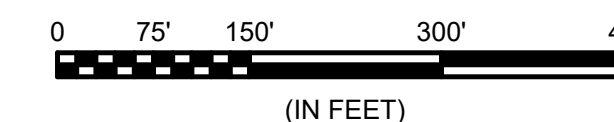
Gary Janzen, P.E. City Engineer  
Project Number 468-85337  
O.C.A. NO. 751582



PROJECT LOCATION



**Vicinity Map**



**Sheet Index**

Sheet	Title
1	Titlesheet
2	SWS 1
3	SWS 1A
4	SWS 2-1
5	SWS 2-2
6	Pre-Cast SWS MH
7	MH Frame & Cover
8	Type 1A CB Inlet 5-10
9	Curb Inlet Underdrain
10	Backyard Inlet
11	Erosion Control SWS
12	4 Corner Lot Grading
13	Grading Plan
14	Typical Sections
15	SWS Coordinates
16	Addition Coordinates-SWS
17	Casa Bella 2nd Plat

Erosion Control Details are available to download from the City of Wichita website.

<http://www.wichita.gov/PWU/Pages/Regulations.aspx>

**Stormwater Certification:**  
New Development

These construction plans were prepared in accordance with the current Stormwater Management Regulations as set forth in the City of Wichita's Stormwater Management Ordinance 16.32 and the policies/guidelines presented in the Wichita/Sedgwick County Stormwater Manual.

Disturbed Area = 14.8 Acres

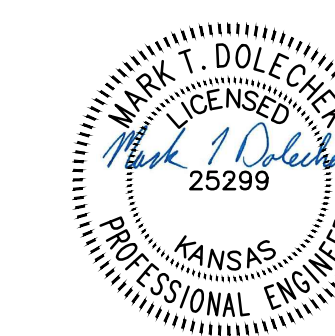
**Water Quality Treatment:** Platting predates water quality treatment requirement, however existing detention pond will provide water quality treatment.

**Downstream Channel Protection:** Platting predates downstream channel protection requirement, however existing detention pond will address downstream channel protection.

**Detention:** Existing Pond in "Reserve C".

The BMP used for this development is: Platting predates BMP requirement, however existing detention pond will act as the BMP.

IMPROVEMENT DISTRICT



Digitally Signed 10/01/2018

October 2018

PLANS PREPARED BY

