

CASA BELLA SECOND ADDITION

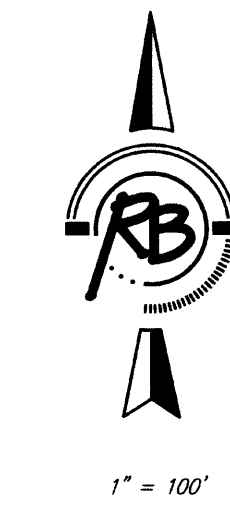
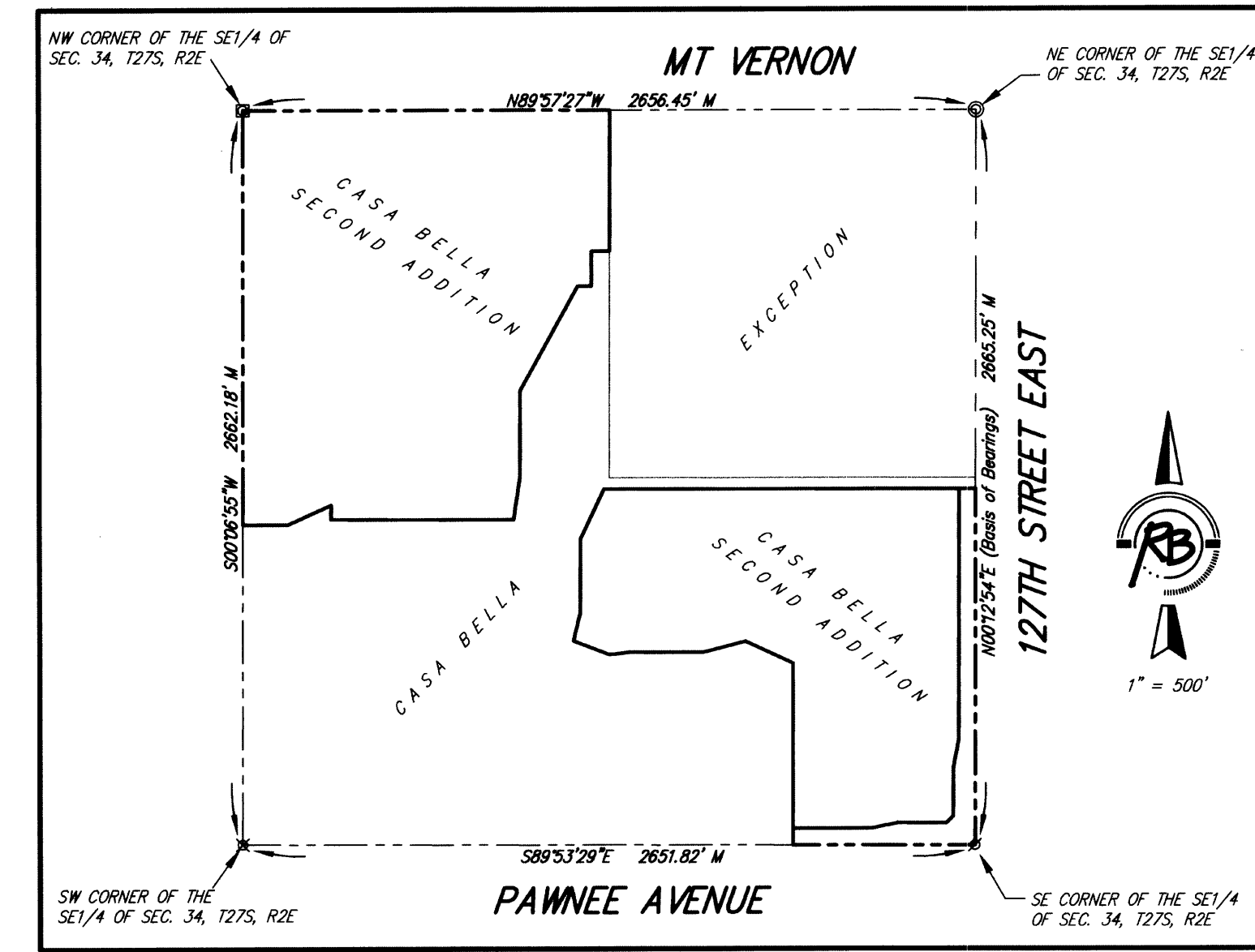
Wichita, Sedgwick County, Kansas



© 2018 GARVER, LLC
THIS DOCUMENT, ALONG WITH THE IDEAS AND DESIGNS CONVEYED HEREIN, SHALL BE CONSIDERED INSTRUMENTS OF PROFESSIONAL SERVICE AND ARE PROPERTY OF GARVER, LLC. ANY USE, REPRODUCTION, OR DISTRIBUTION OF THIS DOCUMENT, ALONG WITH THE IDEAS AND DESIGN CONTAINED HEREIN, IS PROHIBITED UNLESS AUTHORIZED IN WRITING BY GARVER, LLC OR EXPLICITLY ALLOWED IN THE GOVERNING PROFESSIONAL SERVICES AGREEMENT FOR THIS WORK.



Digitally Signed 10/01/2018



BENCH MARK: SRB BRASS DISC 5.545" E. & 5.15" S. OF THE N.W. COR., SW 1/4, SEC. 35, 127S, R2E. ELEVATION = 1348.35 (NGVD29)

P = Plotted (Casa Bella)
M = Measured

SURVEY MARKER LEGEND

- PK NAIL IN CONCRETE (FOUND - ORIGIN UNKNOWN)
- 1/2" IRON PIPE (FOUND - ORIGIN UNKNOWN)
- 3/4" IRON PIPE (FOUND - ORIGIN UNKNOWN)
- 5/8" REBAR W/GARBER CAP (FOUND)
- 1" BAR (FOUND - ORIGIN UNKNOWN)
- 5/8" REBAR W/SRB CAP (FOUND)
- 5/8" REBAR W/R&B CAP (FOUND)
- 5/8" REBAR W/R&B CAP (SET)

BLOCK	LOT NO.	ELEVATION (NGVD29)
2	1, 2, 3, 4, 5, 6, 7	1345.4
3	10, 11, 12	1345.4
3	1, 2, 3, 4, 5, 6, 7, 8, 9	1338.4
6	1, 2, 3, 4, 5	1336.8

SHEET 2 OF 2

File: L:\2018\18267011 - Casa Bella Phase 5\Drawings\C3D\Casa Bella 2nd Plat.dwg, Last Save: 8/13/2018 8:24 AM, Last saved by: DRStandrich, Last plotted by: Dolechek, Mark, T., Plot Date: 10/1/2018 4:54 PM, Plotter used: None, Plot Scale: 1" = 500'

REV.	DATE	DESCRIPTION	BY



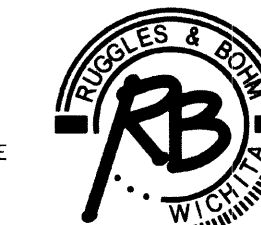
CITY OF WICHITA
WICHITA, KANSAS
CASA BELLA 2nd ADD.
PHASE 5 - SWS

Casa Bella 2nd Plat

JOB NO.: 18267011
DATE: JULY 2018
DESIGNED BY: .
DRAWN BY: .

BAR IS ONE INCH ON ORIGINAL DRAWING
0" = 1" (NOT ONE INCH ON THIS SHEET, ADJUST SCALES ACCORDINGLY.)
DRAWING NUMBER

SHEET NUMBER 17 OF 16



Ruggles & Bohm, P.A.
Engineering, Surveying, Land Planning
924 North Main (316) 264-8008
Wichita, Kansas 67203 (316) 264-4621 fax
www.rbkansas.com E-mail: info@rbkansas.com